

**Producing the
School Census
Autumn 2023
Return**

**English All-Through
Schools**

applicable to 7.212 onwards

Handbook

NOTE: The contents of the graphics (dates, names, panel numbers, etc.) are examples only of what you might expect to see when using SIMS to produce the School Census Return.

C | Contents

01 Introduction	5
Overview	5
How has the School Census Autumn Return Changed since Last Year?	6
Steps to Producing the School Census Return.....	7
Where to Find More Information.....	6
02 Preparing for the School Census Autumn Return	9
Setting SIMS Permissions	9
What Version of SIMS is Required?.....	10
Preparing Data for the School Census Return	10
03 Producing the School Census Autumn Return	15
Creating a new School Census Return.....	15
Configuring the Census Folder	17
Specifying the Security Message for Reports	18
Editing Census Details	18
Calculating All Details	19
Editing School Information	21
Information for Academies	23
Editing Early Years.....	23
Recording Early Years	25
Editing Class Types	28
Resetting All Class Types	30
Identifying which Pupils have no Class Type Specified	30
Editing Pupil/Students with Top-Up Funding	30
Editing Pupil/Student Post Looked After Arrangements	32
Updating Funding and Monitoring	34
What Data should be entered?	35
Editing Funding and Monitoring	36
Managing School Dinners Taken on Census Day	39
Using Dinner Money to Calculate School Dinners Taken on Census Day	40
Using Attendance to Calculate School Dinners Taken on Census Day	41
Using Manual Entry to Record School Dinners Taken on Census Day	42
Entering Attendance Information	42
SIMS Attendance/Lesson Monitor Users	43
SIMS Attendance/Lesson Monitor Not in Use.....	44

Checking Post 16 Learning Aims Data.....	45
Learning Aims Flow.....	48
Finding your way Around the Learning Aims Panel	49
Comparing Learning Aims Information with the Previous Autumn Data.....	53
Comparing Learning Aims Information with Course Manager Data	54
Recalculating Learning Aims Information	54
Editing Learning Aim Details	56
Adding a New Learning Aim Record	58
Excluding Learning Aim Records	61
04 Completing the School Census Autumn Return.....	63
Creating and Validating the School Census Return	63
Resolving Validation Errors and Checking Queries	64
Producing Detail Reports	66
Generating Detail Reports.....	75
Printing a Report from your Web Browser	77
Deleting Temporary Web Browser Files	77
Producing the Summary Report	77
Generating the Summary Report.....	77
Editing an Unauthorised Return	78
Authorising the Return	79
Submitting the Return	81
Retrieving Authorised Census Return Files	82
Copying a Return	83
Deleting an Unauthorised Return.....	83
Index	85

01 | Introduction

Overview.....	5
How has the School Census Autumn Return Changed since Last Year?	5
Steps to Producing the School Census Return.....	4
Where to Find More Information.....	6

Overview

This handbook provides the information needed by All-Through schools in England to complete the School Census Autumn 2023 Return.

The School Census Autumn Return is required to be completed by maintained Nursery schools, Primary schools, Middle schools, Secondary schools, All-Through schools, Special schools, Pupil Referral Units (PRUs), City Technology Colleges (CTCs) and Academies (including free schools) in England. Non-maintained Special schools are also required to submit the return.

Currently, there are three School Census returns each year (i.e. Spring, Summer and Autumn), which collect detailed information about school characteristics and pupil/student details. Different data is collected depending on which return is being prepared and your school phase.

A list of items collected from All-Through schools in England for the School Census Autumn 2023 Return is available in a later section of this handbook.

NOTE: The contents of the graphics (dates, names, panel numbers, etc.) are examples only of what you might expect to see when using SIMS to produce the School Census Return.



Additional Resources:

Preparing for the School Census Autumn 2023 Return handbook

How has the School Census Autumn Return Changed since Last Year?

Changes to the School Census Autumn Return include the following:

Key Dates for the School Census Autumn 2023 Return

- Census Date: 05/10/2023
- Attendance collected from 10/04/2023 to 31/07/2023
- Exclusions collected from 01/01/2023 to 31/07/2023
- Alternative Provision Placements collected from 18/05/2023 to 05/10/2023
- Funding and Monitoring collected from 01/08/2023 to 05/10/2023
- Learning Aims collected from 01/08/2022 to 05/10/2023
- Free School Meals collected from 19/05/2023 to 05/10/2023.

Updates for the School Census Returns

Please refer to the [Producing the School Census Return \(English All-Through schools\)](#) support article for changes that have been made to SIMS7 version 7.212.

Additional Information

In addition to this handbook, a preparation guide that outlines how to prepare your data for the School Census, is also available from the **SIMS Documentation Centre**.

You are strongly advised to check the following SIMS Newsfeeds because they provide a range of explanatory text, presentations, videos and spreadsheets that you may find useful. These newsfeeds are updated regularly to provide the latest news and answers to enquiries. In particular, the newsfeeds for School Census provide the latest iteration of our spreadsheet for DfE validation rules and SIMS solutions.

The [SIMS Newsfeed - England Hub](#) provides links to all the statutory returns related newsfeeds.

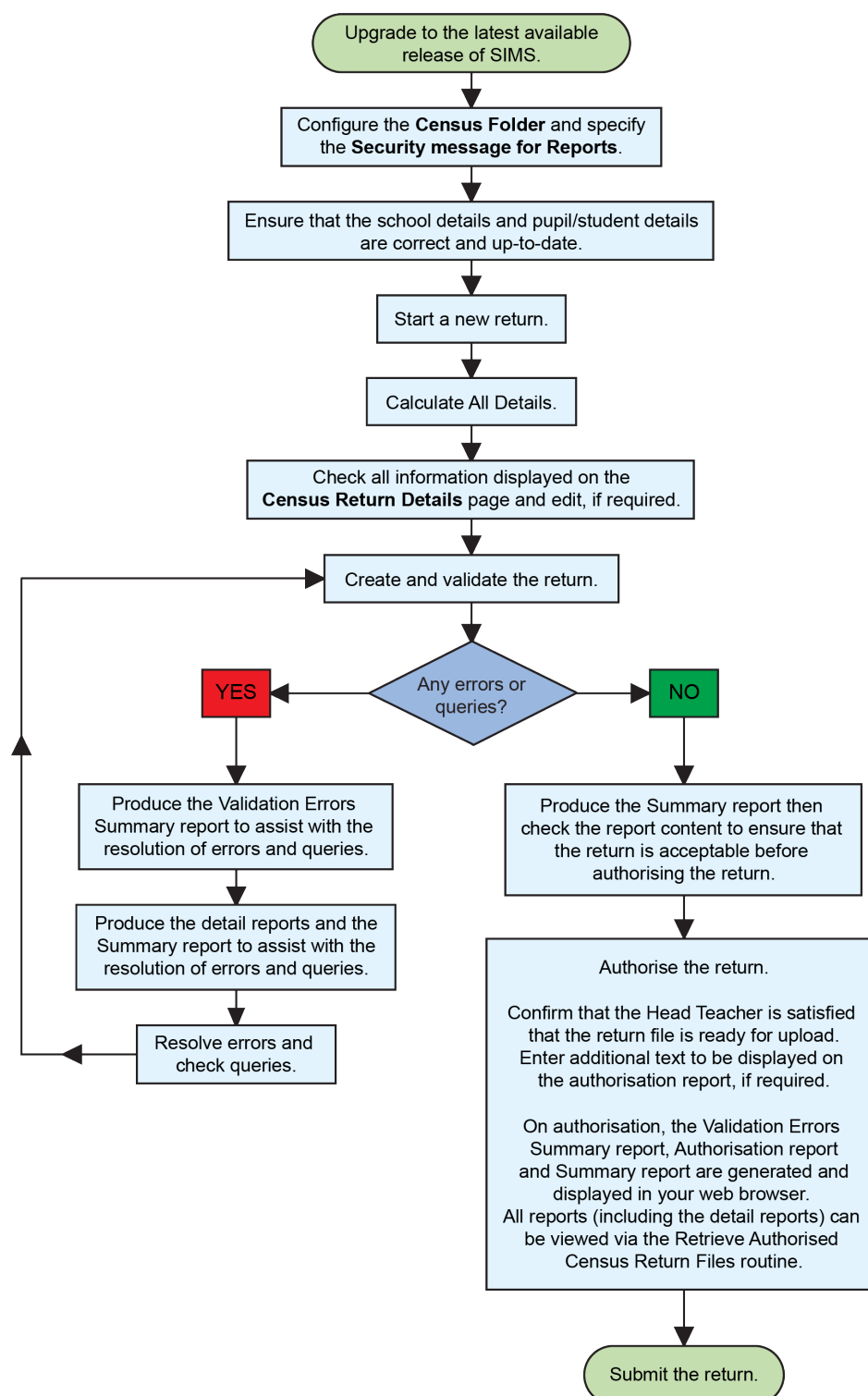
Where to Find More Information

Online help can be accessed by pressing **F1** or clicking the applicable **Help** button in SIMS.

A wide range of documentation is available from the **SIMS Documentation Centre**, including handbooks, quick reference sheets and tutorials. Click the **Documentation** button located on the top right-hand side of the **SIMS Home Page**, select the required category, then select the document you require.

Steps to Producing the School Census Return

The process of producing the School Census can be separated into several steps, some of which might need to be repeated to eliminate validation errors and queries.



02 | Preparing for the School Census Autumn Return

Setting SIMS Permissions	9
What Version of SIMS is Required?	10
Preparing Data for the School Census Return	10

Setting SIMS Permissions

The following permissions are applicable to users who deal with returns.

Running the Return

To run the return, you must be a member of one of the following user groups in System Manager:

- Returns Manager
- Returns Operator.

Editing and Preparing Data

Users who edit and prepare data must have permissions to access additional areas of SIMS, e.g. pupil/student details, school details, etc. These users must be a member of the user groups applicable to the areas they are editing (please see *Where to find More Information about Permissions* on page 10).

Permissions Required to Import a Revised Fileset

The Import Fileset functionality enables updates to the Validation Errors Summary and the Summary report (derived from files supplied by the Statutory Body), and detail reports (provided by SIMS) to be imported into SIMS between SIMS releases.

To use the Import Fileset functionality (via **Tools | Setups | Import Fileset**), you must be a member of one of the following user groups in System Manager:

- Returns Manager
- System Manager.

For more information about the Import Fileset functionality, please refer to the applicable preparation guide. To access the SIMS **Documentation Centre**. Click the **Documentation** button located on the top right-hand side of the SIMS **Home Page**.

Where to find More Information about Permissions

Please contact your System Administrator/Manager if you are not sure whether you have the required permissions. For more information, please refer to the *Managing SIMS Users, Groups and Databases* handbook.

The SIMS Permissions spreadsheet describing the numerous permissions available in SIMS is available on the support portal (https://customer.support-ess.com/csm?id=kb_article_view&sysparm_article=KB0051293).

What Version of SIMS is Required?

To run the return, you must have the SIMS 2023 Summer Release (7.212) or later installed.

To check which version of SIMS is installed, open SIMS and then select **Help | About SIMS**.

The version should read 7.212 or later.

Preparing Data for the School Census Return

Before beginning the process of producing the return, it is advisable to spend time ensuring that all school level and pupil/student level information is present and accurate in SIMS. For example, ensure that school details are correct, all new pupil/students have been added to SIMS, all leavers have been recorded and where applicable all exclusions have been recorded, etc.

The following information is collected from All-Through schools for the School Census Autumn 2023 Return.

School Level Data

Characteristics: LA number, DfE establishment number, school name, school phase, school type, highest national curriculum year, lowest national curriculum year, intake type, governance, school email address and school telephone number.

Pupil/Student Level Data

- Pupil/Student Identifiers: unique pupil number (UPN) and former UPN, unique learner number (ULN), surname, forename, middle names, former surname, preferred surname, date of birth and gender.
- Characteristics:
 - Study Programme planned learning hours for the current year and Study Programme planned learning hours for the previous year
 - Study Programme planned employability, enrichment and pastoral hours for the current year, and Study Programme planned employability, enrichment and pastoral hours for the previous year
 - T Level Programme planned learning hours for the current year
 - T Level Programme planned employability, enrichment and pastoral hours for the current year
 - Prior Attainment Maths:
 - Highest grade in GCSE Maths achieved as at the current year.

- Year taught in for achieving GCSE Maths prior attainment as at the current year.
- Maths GCSE funding exemption.
- Year taught in for achieving GCSE Maths prior attainment as at the previous year.
- Prior Attainment English:
 - Whichever is the highest of the grades in GCSE English Language or GCSE English Literature achieved as at the current year.
 - Year taught in for achieving GCSE English Language prior attainment as at the current year.
 - English GCSE funding exemption.
 - Year taught in for achieving GCSE English Language prior attainment as at the previous year.
- first language
- free school meal eligibility start date, end date and UK country in which the eligibility applies
- service children in education indicator
- school dinner taken (**applicable to schools with pupils in Reception, Year 1 and Year 2**)
- top-up funding indicator
- post looked after arrangements
- funded free entitlement hours, extended entitlement childcare hours, 30 hour code, disability access fund indicator and hours at setting
- Youth Support Services Agreement (YSSA) indicator
- learner funding and monitoring type, code and hours
- full-time employment indicator.
- Status:
 - enrolment status
 - date of entry and date of leaving
 - part-time indicator
 - boarder indicator and actual national curriculum year group (year taught in)
 - actual national curriculum year group (year taught in) on leaving
 - class type.
- Special Educational Needs:
 - SEN provision
 - member of SEN unit (sometimes called special class) indicator
 - member of resourced provision indicator.
- Alternative Provision Placement:
 - unique reference number (URN)
 - UK provider register number (UKPRN)
 - setting type
 - placement reason

02| Preparing for the School Census Autumn Return

- placement entry date
- SEN provision at placement date of entry
- placement leaving date
- SEN provision at placement date of leaving
- attendance pattern and sessions per week
- Companies House Number and AP Postcode.
- Home Information:
 - pupil/student's home address
 - unique property reference number (UPRN).
- Exclusion Information:
 - category
 - reasons (up to three)
 - SEN provision
 - exclusion start date
 - actual number of sessions from which the pupil/student was excluded.
- Attendance Information:
 - If the SIMS Attendance is in use: all attendance categories are collected in the census.
 - If the SIMS Attendance is not in use: possible sessions, sessions missed due to authorised absence, sessions missed due to unauthorised absence, sessions attending approved educational activity, sessions missed due to exceptional circumstances, attendance codes and number of sessions missed.
- Programme Aims **applicable to schools with a Sixth Form returning Learning Aims:**
 - Qualification Number (QN, also known as QAN - Qualification Accreditation Number)
 - programme type (Study, T Level, T Level Transition)
 - start date, planned end date and actual end date
 - completion status
 - withdrawal reason
 - traineeship.
- Learning Aims **applicable to schools with a Sixth Form:**
 - Qualification Number (QN, also known as QAN - Qualification Accreditation Number)
 - Discount Code (also known as Subject Classification Code)
 - learning aim start date, planned end date and actual end date
 - learning aim status
 - core aim
 - partner UKPRN
 - withdrawal reason
 - traineeship.
- Work Placements **applicable to schools with a Sixth Form:**

- Qualification Number (QN, also known as QAN - Qualification Accreditation Number)
- start date and end date
- employer ID
- mode and planned hours.

For more information and instructions on all the preparations that need to be carried out before the census return is produced, please refer to the appropriate *Preparing for the School Census Autumn 2023* guide.

The preparation guide, together with other useful School Census documentation, is available from the SIMS **Documentation Centre** (accessed via the **Documentation** button, which is located on the top right-hand side of the SIMS **Home Page**).

03 | Producing the School Census Autumn Return

Creating a new School Census Return.....	15
Configuring the Census Folder	17
Specifying the Security Message for Reports	18
Editing Census Details.....	18
Editing School Information	21
Editing Early Years.....	23
Editing Class Types	28
Editing Pupil/Students with Top-Up Funding	30
Editing Pupil/Student Post Looked After Arrangements	32
Updating Funding and Monitoring	34
Managing School Dinners Taken on Census Day.....	39
Entering Attendance Information	42
Checking Post 16 Learning Aims Data	45

Creating a new School Census Return

Before creating a new return, ensure that all pupil/student and school information is present and accurate in SIMS.

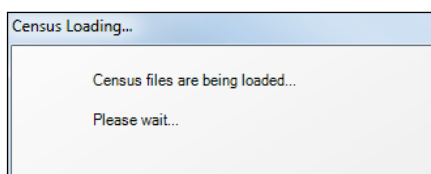
It is possible to create more than one return, enabling you to carry out dry runs so that you can check what data needs to be added or updated. Any unwanted returns can be deleted (providing they have not been authorised).

Data is collected for the following pupil/students:

- All pupil/students on-roll on 05/10/2023 (census day).
- Any additional pupil/students not on-roll on census day who:
 - were expected to attend or provide a reason for absence for at least one session during the collection period from 18/04/2023 to 31/07/2023.
 - had an exclusion that started between 01/01/2023 and 31/07/2023.
 - had an alternative provision placement that started between 18/05/2023 to 05/10/2023.
 - had funding and monitoring information between 01/08/2023 and 05/10/2023.
 - had Learning Aims during the date range 01/08/2022 to 05/10/2023.

03| Producing the School Census Autumn Return

1. Select **Routines | Statutory Returns | School Census** to load the School Census validation and reporting files.



NOTE: The first time that **Routines | Statutory Returns | School Census** is selected during each SIMS session, there is a delay while the School Census files are loaded.

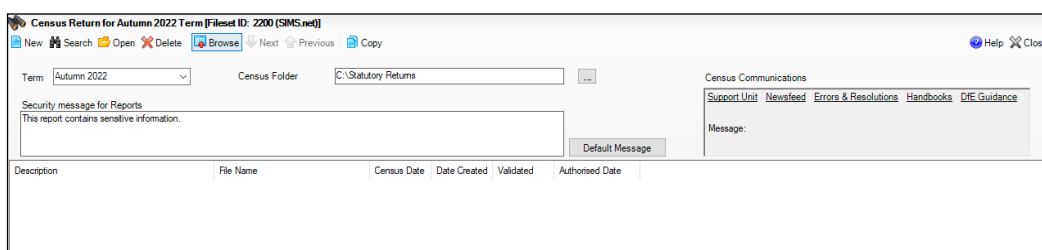
When the files are loaded, the **Census Return** browser is displayed.

The **Census Communications** message box includes links to the newsfeed, errors and resolutions document, handbooks, DfE guidance and Support Unit website (if available). Any additional information to help with the completion of the return is also displayed, if applicable.

NOTES:

The **Fileset ID** is displayed in the browser header (for information only). The following graphic shows the position for the first release in the 2500 fileset series, where the fileset is obtained from the SIMS .net folder. As soon as any further release in the series is imported, the reference to the SIMS .net folder is no longer displayed. This is because the fileset data is then obtained from the document server. Instead the import date is displayed adjacent to the **Fileset ID**.

If a post-release consolidated database patch is applied, the patch ID and run date are also displayed in the browser.



By default, the **Term** field displays the appropriate term for the selected return, in this instance **Autumn 2023**.

2. Ensure that the appropriate **Census Folder** is selected and that the required **Security message for Reports** is specified, as described in the following sections.

Configuring the Census Folder

Before creating a return, the folder in which the return file will be saved must be specified.

IMPORTANT NOTES: Due to the sensitive nature of some of the data stored in SIMS, careful consideration must be given when specifying the location of any folder into which you save sensitive data, e.g. census returns, imported and exported CTFs, etc.

You should be mindful of your school's responsibilities with respect to information security. Consider which users have access to the chosen folder, especially if the folder is shared on a server. Please refer to the government website for more information about securing your information (<https://www.gov.uk/service-manual/technology/securing-your-information>). If you are in any doubt, you should consult with your IT Security Officer before proceeding.

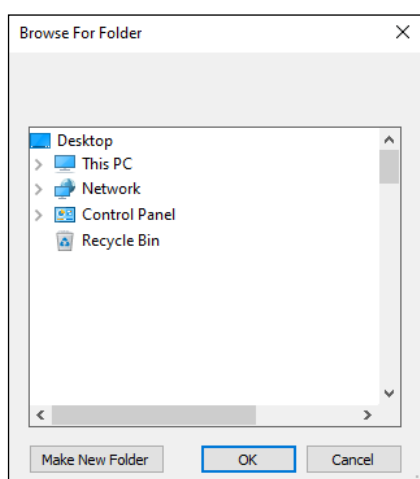
The General Data Protection Regulation (GDPR), which replaces the Data Protection Act 1998, is a directive for certain safeguards regarding the use of personal data. It is important that schools process all data (not just the data collected for the school census) in accordance with the full requirements of the GDPR.

Further information on the GDPR can be found on the Guide to the General Data protection Regulations (GDPR) page of the Information Commissioners Office (ICO) website (<https://ico.org.uk/for-organisations/guide-to-the-general-data-protection-regulation-gdpr>).

1. In the **Census Folder** field, enter the location of the folder where the return files are to be stored.

Alternatively, click the **Browse** button to display the **Browse For Folder** dialog.

 *Browse button*



03| Producing the School Census Autumn Return

2. Navigate to the location of the required folder and highlight it. If a suitable folder does not exist, click the **Make New Folder** button, then enter a suitable name for the new folder.

IMPORTANT NOTE: If you are changing the location of the folder, ensure that authorised personnel only have access to the new folder, as the folder will contain sensitive data. For more information, please see the important note at the beginning of this section.

3. Click the **OK** button.
A message dialog requests confirmation that you want to continue.
4. Click the **OK** button to select or create the folder and return to the browser, where the new folder name is displayed.
5. Ensure that the **Security Message for Reports** is appropriate for your school.

Specifying the Security Message for Reports

The **Security message for Reports** field displays the text that will be included in the header of each report.

The default text (**This report contains sensitive information**) can be edited, if required. Clicking the **Default Message** button reverts the amended text to the original default text.

When the security message and census folder are specified, a new return can be created. Click the **New** button to display the **Census Return Details** page.

Editing Census Details

The **Census Details** panel displays the following read-only information:

- Census Date 05/10/2023
- Attendance Collection from 10/04/2023 to 31/07/2023
- Exclusions collected from 01/01/2023 to 31/07/2023
- Alternative Provision Placements collected from 18/05/2023 to 05/10/2023
- Funding and Monitoring collected from 01/08/2023 to 05/10/2023
- Learning Aims and collected from 01/08/2022 to 05/10/2023
- FSM (Free School Meal) data collected from 19/05/2023 to 05/10/2023 (applicable to on-roll pupil/students only).

The screenshot shows the 'Census Details' panel with the following information:

Census Date	06/10/2022	Calculate All Details
Description	School Census Autumn 2022	
Attendance collected from	18/04/2022	Attendance collected to 31/07/2022
Exclusions collected from	01/01/2022	Exclusions collected to 31/07/2022
AP Placements collected from	19/05/2022	AP Placements collected to 06/10/2022
FAM collected from	01/08/2022	FAM collected to 06/10/2022
Learning Aims collected from	01/08/2021	Learning Aims collected to 06/10/2022
*FSM collected from	20/05/2022	FSM collected to 06/10/2022

*Only collected for on roll pupils not leavers

The default **Description (School Census Autumn 2023)** can be edited, if required, e.g. when carrying out a dry run.

WARNING: Each description used must be unique. An error message is displayed if SIMS identifies a duplicate description.

A unique description also helps to identify the required return when viewed in the **Census Return** browser and can be particularly useful when creating dry runs, or copies of existing returns.

Calculating All Details

Clicking the **Calculate All Details** button extracts the required information from SIMS and displays the results in the applicable panels of the **Census Return Details** page.

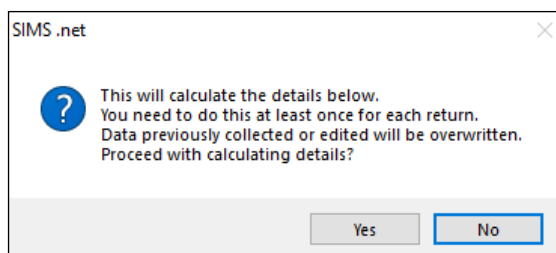
IMPORTANT NOTE: You must calculate all details at least once to populate the various panels for each return.

Do not use the **Calculate All Details** button more than once if you wish to keep any changes you have made. Clicking the **Calculate All Details** button overwrites any previously collected or edited data (in every panel where details are calculated automatically) with the data currently stored in SIMS.

Any details that are calculated automatically should be checked and edited, if required.

1. Click the **Calculate All Details** button.

A message advises that any existing data currently shown on the **Census Return Details** page will be overwritten.



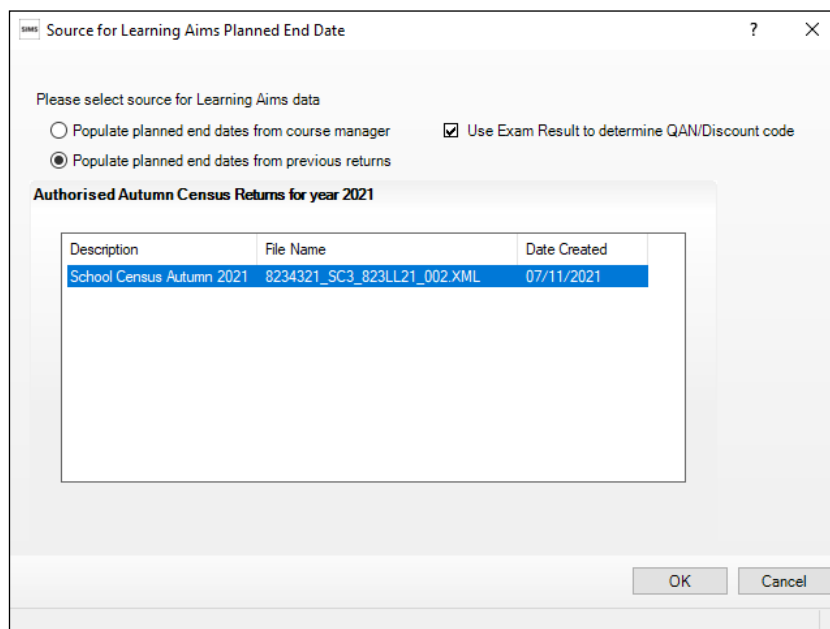
2. Click the **Yes** button to calculate all details.

At this point, depending on the number of pupil/students in the school, there might be a short delay while details are calculated.

When the Calculate All Details process is complete, the **Source for Learning Aims Planned End Date** dialog is displayed.

03| Producing the School Census Autumn Return

3. Specify the required source for the Learning Aims data:
 - **Populate planned end dates from previous returns** (default option)
Ensure that the **Populate planned end dates from previous returns** radio button is selected then highlight the required authorised Autumn Census Return.



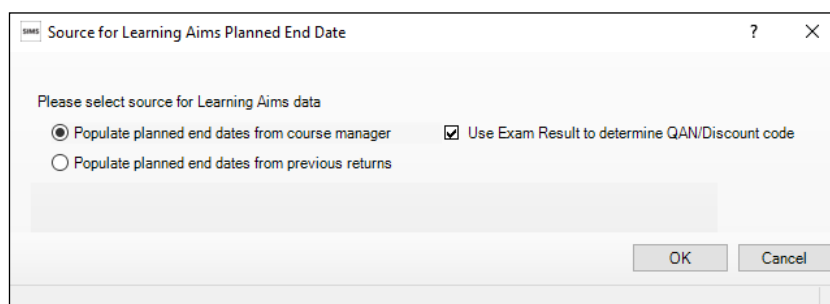
If more than one authorised School Census Autumn 2022 Return exists, the returns are listed in authorised date order.

- **Populate planned end dates from course manager**

An example of when this option could be useful:

If any two year Learning Aims were inadvertently given an end date last year that indicated a one year Learning Aim, selecting **Populate planned end dates from course manager** could save your school some time. This is only acceptable when correcting a mistake and not where it has been decided to change the length of time in which to deliver the Learning Aim.

Select the **Populate planned end dates from course manager** radio button.



- If you want to **Use Exam Result to determine QAN/Discount code**, ensure that the associated check box is selected.

If QAN/Discount Code combinations from one or more Exam Boards do not follow the expected pattern and therefore cause incorrect allocation of QWS QAN/Discount Codes, it may be best to deselect **Use Exam Result to determine QAN/Discount code**.

If the check box is deselected, the QWS QAN code in Course Manager is reported rather than the Awarding Organisation (AO) QAN linked to the exam result.

- Click the **OK** button.

*NOTE: If you choose to **Cancel** at this point in the process, Learning Aims Planned End Dates will be calculated from Course Manager.*

The applicable panels on the **Census Return Details** page are then populated with data.

- The return can be saved at any point by clicking the **Save** button.



More Information:

Checking Post 16 Learning Aims Data on page 45

Editing School Information

The **School Information** panel displays details that have previously been recorded on the **School Details** page in SIMS (**Focus | School | School Details**). The information displayed might vary depending on your school and the details entered, e.g. Academy specific information.

The details displayed are read-only but can be amended, if necessary, via the **School Detail** button.

School Information			
School Name	England Allthrough School		
LA	822	Establishment Number	1001
Telephone	851234	URN	
School E-mail Address	office@ga.org.uk		
School Phase	<input checked="" type="checkbox"/> AT <input type="checkbox"/> All Through		
School Type	Comprehensive Upper School 13-18		
Governance	Community	Intake Type	Comprehensive
Lowest NC Year	E1	Highest NC Year	13
School Detail			

03| Producing the School Census Autumn Return

1. If any details are missing or incorrect, click the **School Detail** button to display the **School Detail** dialog, where information applicable to your school is displayed.

School Details - England Allthrough School

Save Undo Print Help

1 Establishment 2 Address 3 Contact Details 4 Sites 5 Documents 6 Childcare 7 Support Unit Details

1 Establishment

School Name: England Allthrough School

LA: 822 Bedford Borough

Establishment Number: 1001

Unique Reference Number: 123456

UK Provider Reference Number:

School Phase: All Through

School Type: Comprehensive, Upper School 13-18

School Governance: Community

Intake Type: Comprehensive

Previous School Name: Test

Previous Estab Number: 1234

Previous URN Number: 234567

Boarding Pupils: Nursery Class Special Class or Unit

Date Name Changed: 16/07/2015

Earliest DOA: 16/07/2015

Date Number Changed: 16/07/2015

Head Teacher: Mrs Esther Leah Aaron

Main Contact:

OK Cancel

2. Add or amend the school details, selecting from the drop-down lists where applicable.

NOTE: The **School Name**, **LA** number, **Establishment Number**, **School Phase** and **Curriculum Years** were set up when SIMS was installed. If any of these details are incorrect, please contact your Local Support Unit for assistance.

3. Ensure that the establishment's six digit **Unique Reference Number** (URN) is entered. The number is available via the Get information about schools website (<https://get-information-schools.service.gov.uk/>), which is a register of schools and colleges in England.
4. Click the **Save** button, then click the **OK** button to return to the **Census Return Details** page, where the updated details are displayed.

Information for Academies

2 School Information							
School Name	Green Abbey School		Previous Name	Previous Name School	Date Changed	31/07/2017	
LA	823	Establishment Number	4321	Previous Estab Number	1234	Earliest DOA	17/07/2017
Telephone	851234	URN		Previous URN		Date Changed	
School E-mail Address	office@ga.org.uk						
School Phase	SS	Secondary					
School Type	Academies						
Governance	Academies	Intake Type	Comprehensive				
Lowest NC Year	7	Highest NC Year	13				
School Detail							

Academies should also ensure that the following information is recorded, if applicable:

- The **School Type** and **School Governance**.
Select **Academies** from the applicable drop-down lists.
- The **Previous Name** and **Date Name Changed**.
- The **Previous Estab Number** and **Earliest DOA** (date of admission).
This information is used by School Census. If the establishment number (DfE number) has changed for sponsor-led Academies, historical information is not collected, and the earliest date of admission is reported in the School Census.
- The **Previous URN Number** (used by other census returns) and **Date Number Changed**.
This information is used by the School Workforce Census. For all types of Academies opened in the collection period, the date that the establishment's URN changed is used to determine when the academy was formed. Historical information is not collected from before the date the URN changed.

Editing Early Years

Early Years data is collected from all schools that have early years pupil/students on-roll on census day. The following items are collected:

- Hours at Setting
- Funded Hours
- Disability Access Fund
- 30 Hour Code
- Extended Funded Hours.

NOTE: Disability Access Fund, 30 Hour Code and Extended Funded Hours are not collected in the census for pupil aged two at 31/08/2023.

Funded Hours and Hours at Setting

Funded universal free entitlement hours are the total number of free childcare hours that a child receives. All three and four year old pupil/students are eligible for 15 hours funded childcare a week. Advice about the eligibility of two year old children for funded childcare can be found on the DfE website (<https://www.gov.uk/help-with-childcare-costs/free-childcare-2-year-olds>).

03| Producing the School Census Autumn Return

Hours at Setting include funded free entitlement hours (as described previously) plus any additional hours funded by other means.

The hours collected in this return are for the week in which the census day falls.

Date of Birth Ranges	School Type and National Curriculum Year Group	Funded Universal Free Entitlement Hours Maximum Entitlement
01/09/2019 to 31/08/2021 inclusive	All relevant schools and year groups.	15 hours
01/09/2018 to 31/08/2019 inclusive	For pupils in National Curriculum Year groups E1, E2, N1 and N2 only.	15 hours

Disability Access Fund

The Disability Access Fund (DAF) is payable as a lump sum once a year and awarded to three and four year old pupil/students who meet the following criteria:

- They are in receipt of child Disability Living Allowance (DLA) and
- They access their entitlement to free early learning and childcare, e.g. funded hours.

Disability Access Fund data is collected in this return for pupil/students who are in receipt of the fund on census day.

Date of Birth Ranges	School Type and National Curriculum Year Group
01/09/2019 to 31/08/2020 inclusive	All relevant schools and year groups.
01/09/2018 to 31/08/2019 inclusive	For pupils in National Curriculum Year groups E1, E2, N1 and N2 only.

Additional information about the Disability Access Fund is available via the DfE website (<https://www.gov.uk/education/early-years-funding>).

Extended Funded Hours and 30 Hour Code

Extended Funded Hours are the number of hours that a child can receive in addition to the initial 15 funded hours. Extended Funded Hours are applicable to three and four year old pupil/students only.

Extended Funded Hours can double the original 15 hours of free childcare to 30 hours a week, i.e. 15 funded free entitlement hours + 15 extended entitlement hours = 30 hours, provided that the following criteria are met:

- Both parents must be working (or the sole parent is working in a lone parent family) and live in England.
- Each parent earns, on average, a weekly minimum equivalent to 16 hours at National Minimum Wage or National Living Wage.
- Each parent must have an annual income of less than the specified amount.

Parents who meet the extended funded hours criteria must obtain a unique code from the Tax Office (HM Revenue & Customs), then provide it to the school, together with other details, to confirm their eligibility for extended childcare hours.

The 11-digit **30 Hour Code** and the number of extended funded hours are collected in this return for the week in which the census day falls.

Date of Birth Ranges	School Type and National Curriculum Year Group	Maximum Funded Universal Free Entitlement and Extended Free Entitlement Hours
01/09/2019 to 31/08/2020 inclusive	Applicable to all relevant schools and year groups. A valid 30 Hour Code must be provided.	15 funded universal free entitlement hours plus 15 extended free entitlement hours equals 30 hours.
01/09/2018 to 31/08/2019 inclusive	For pupils in National Curriculum Year groups E1, E2, N1 and N2 only. A valid 30 Hour Code must be provided.	15 funded universal free entitlement hours plus 15 extended free entitlement hours equals 30 hours.

Extended Funded Hours information provided by the DfE can be found on their website (<https://www.gov.uk/government/publications/30-hours-free-childcare-1a-and-early-years-provider-guide>).

Recording Early Years

The required data can be recorded:

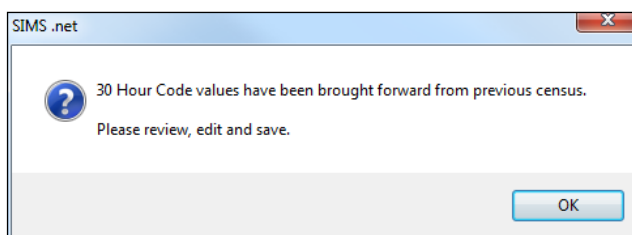
- via the **Edit** button in the **Early Years** panel
- via **Tools | Statutory Returns Tools | Update Early Years - Update Early Years** page. The data in the **Early Years** panel must be refreshed by clicking the **Recalculate** button after using the Update Early Years routine.

If data has been recorded previously, the values are displayed in the read-only **Early Years** panel. Only cohorts applicable to your school are displayed.

3 Early Years											
Name	Date of Birth	AdNo.	YTI	Reg	Age at 31/08/2022	Age at 31/12/2022	Hours at Setting	Funded Hours	Disability Access Fund	30 Hour Code	Extended Funded Hours
Atkins,Eve	28/07/2019	001840	N2	PM	3	3	15	15	No		
Birkett,Scott	03/03/2019	001841	N2	AM	3	3	15	15	No		
Cardale,Luke	17/05/2019	001842	N2	PM	3	3	30	15	No	10038877533	
Carmichael,Meghan	21/06/2019	001843	N2	AM	3	3			No		
Ciobanu,Mitica	23/09/2018	001844	N2	AM	3	4			No		
Clifton,Rhianna	25/04/2019	001845	N2	PM	3	3			No		
Dickinson,Adam	05/12/2018	001846	N2	PM	3	4			No		

03| Producing the School Census Autumn Return

1. In the **Early Years** panel, click the **Edit** button to display a message informing you that data has been brought forward from the previous census.



2. Click the **OK** button to display the **Update Early Years** page. By default, the current term is displayed in the **Census** panel.

Update Early Years

Save Undo

Census Term: Autumn 2022 Update Hours

Pupils View Age at 31/08/2022: All YTI: All Reg: All Status: All

Pupils
Disability Access Fund, 30 Hour Code and Extended Funded Hours are NOT collected in the census for pupils aged 2 at 31/08/2022

Name	Date of Birth	AdNo.	YTI	Reg	Age at 31/08/2022	Age at 31/12/2022	Hours at Setting	Funded Hours	Disability Access Fund	30 Hour Code	Extended Funded Hours
Atkins,Eve	28/07/2019	001840	N2	PM	3	3	15	15	No		
Birkett,Scott	03/03/2019	001841	N2	AM	3	3	15	15	No		
Cardale,Luke	17/05/2019	001842	N2	PM	3	3	30	15	No	10038877533	
Carmichael,Meghan	21/06/2019	001843	N2	AM	3	3			No		
Ciobanu,Mitica	23/09/2018	001844	N2	AM	3	4			No		
Clifton,Rhian	25/04/2019	001845	N2	PM	2	2			No		

Primary phase schools that have defined Early Years Attendance Patterns (via **Focus | Pupil | Pupil Details**) for pupil/students who are receiving free nursery care can update Hours at Setting automatically.

- a. Click the **Update Hours** button (applicable to Primary phase schools only).

The number of Hours at Setting that the listed pupil/students are expected to attend during the census week (based on the early years provision times recorded as part of their attendance pattern) are displayed in the **Pupils** panel.

- b. Edit the values, if required.

NOTE: If your school does not use the Define Early Years Attendance Patterns functionality, the data can be entered in the grid manually.

3. To add or edit the number of **Hours at Setting, Funded Hours** and **Extended Funded Hours** for an individual pupil/student, select the required criteria in the **Pupils View** panel.

In the **Pupils** panel, highlight the required pupil/student, click the applicable cell and then enter the required number of hours.

IMPORTANT NOTES: Values for **Funded Hours**, **Hours at Setting** and **Extended Funded Hours** should be entered using two decimal places. For example, 1 hour 15 minutes must be entered as 1.25. Zero (0) is an accepted value.

If the value entered is within the range accepted by SIMS but is higher than what the DfE expects, a validation error is displayed when the return is created and validated. An explanation as to why the value is higher should be recorded on the COLLECT Portal.

4. If most of the pupil/students are receiving the same number of hours, the following method can be used to populate the column quickly:
 - a. In the **Pupils View** panel, select the required year group from the Year Taught In (**YTI**) drop-down list. The selected pupil/students only are displayed in the **Pupils** panel.
 - b. Right-click in the **Pupils** panel, then select **Select All** from the drop-down list.
 - c. Click in one of the highlighted cells of the column you wish to populate, i.e. **Hours at Setting**, **Funded Hours** or **Extended Funded Hours**, then enter the number of hours that is applicable to most pupil/students.
This number is then entered automatically for all the selected pupil/students.
 - d. Click to the right of the grid to deselect all.
 - e. Edit the entry for each pupil/student who is receiving a different number of hours. This is achieved by highlighting the required pupil/student, clicking the associated **Hours at Setting**, **Funded Hours** or **Extended Funded Hours** cell (as applicable) then entering the required number.
5. Indicate whether the pupil/students are in receipt of the **Disability Access Fund**. Click the applicable cell then select **Yes** or **No** from the drop-down list.
6. Enter the 11 digit **30 Hour Code** in the applicable cell, if in receipt of extended funded hours.

IMPORTANT NOTE: Each pupil/student must have a different 30 hour code. Ensure that all 11 digits are entered.

7. Click the **Save** button.
If there are any pupil/students for whom zero hours have been recorded, a message is displayed. Click the **Yes** button to save the data or the **No** button to return to the **Update Hours** page, where the number of hours can be entered.
8. Click the **OK** button to return to the **Census Return Details** page, where the updated hours are displayed.

IMPORTANT NOTES:

If, while completing the return, any of the following processes are performed, click the **Recalculate** button (located at the top right-hand side of the **Early Years** panel) to ensure that the up-to-date data is displayed:

- any information is updated via **Tools | Statutory Return Tools | Update Early Years**
- a new pupil/student is added in SIMS
- a pupil/student's date of birth is amended.

Please note that when information is updated via the **Edit** button, the **Early Years** panel is refreshed automatically.

**More Information:**

Early Years Report on page 74

Using the Status to determine if Hours at Setting or Funded Hours are recorded

1. On the **Census Return Details** page, click the **Edit** button (located in the **Early Years** panel) to display the **Update Early Years** page.
2. In the **Pupils View** panel, ensure that the required **Age at** date, **YTI** and **Reg** group are selected and then select **No Hours at Setting** (or **No Funded Hours**) from the **Status** drop-down list.

Only pupil/students who do not have an entry for **Hours at Setting** (or **Funded Hours**) are displayed.

3. Enter the required values for these pupil/students as described previously.
4. Click the **Save** button.

Editing Class Types

The type of class (either **Nursery** or **Other**) that each pupil/student belongs to on census day must be specified. Pupil/Students in your Nursery class should be specified as **Nursery**, with all other pupil/students specified as **Other**.

If the class types have been recorded previously via **Tools | Statutory Return Tools | Update Class Type**, the data is displayed in the **Class Type** panel.

Name	Date of Birth	Gender	AdNo	YTI	Reg	Nursery	Other
Abbas, Latif	11/11/2017	Male	001780	R	ELM		✓
Abbott, Jessica	17/02/2015	Female	001663	3	3TO		✓
Abhra, Shaquib	17/12/2014	Male	001582	3	3TO		✓
Abrams, Paul	15/12/2015	Male	001651	2	2JB		✓
Ackton, Charlotte	10/02/2015	Female	001590	3	3CB		✓
Ackton, Simon	12/12/2017	Male	001860	R	PINE		✓

The **Class Type** panel is read-only. However, you can review, edit and save class types by clicking the **Edit** button.

1. Click the **Edit** button to display the **Update Class Type** dialog.

Name	Date of Birth	Gender	AdNo.	YTI	Reg	Nursery	Other
Abbas, Laif	11/11/2017	Male	001780	R	ELM	✓	
Abbott, Jessica	17/02/2015	Female	001663	3	3TO		✓
Abhra, Shaquib	17/12/2014	Male	001582	3	3TO		✓
Abrams, Paul	15/12/2015	Male	001651	2	2JB		✓
Ackton, Charlotte	10/02/2015	Female	001590	3	3CB		✓
Ackton, Simon	12/12/2017	Male	001860	R	PINE		✓
Adams, Nancy	18/12/2012	Female	001460	E	EBB		✓

NOTE: If new pupils exist the default class type is displayed as blank.

2. To specify the class type for an individual pupil, click the appropriate cell of the **Nursery** or **Other** column to display a tick. Clicking again removes the tick.
3. If all or the majority of pupils need to be assigned the same class type, the following method can be used to quickly populate the **Nursery** and **Other** columns:
 - a. Right-click the **Other** column header, then select **Check All** from the pop-up menu.
 - b. In the **Pupils View** panel, select a Nursery year from the year taught in (**YTI**) drop-down list.
The selected pupils only are displayed in the **Pupils** panel.
 - c. Right-click the **Nursery** column header then select **Check All** from the pop-up menu.
 - d. Repeat steps *b* and *c* for any additional Nursery year.
 - e. To ensure that your selection is correct, select **All** from the Year Taught In (**YTI**) drop-down list, then check the data displayed.
4. Click the **Save** button.
5. If a message is displayed advising you that some pupils have not been assigned a class type, click the **No** button then ensure that a class type is allocated to every pupil before saving again.

IMPORTANT NOTE: To prevent validation failures when the School Census file is created, every pupil/student must be assigned a class type.

6. Click the **OK** button to return to the **Census Return Details** page, where the updated class types are displayed in the **Class Type** panel.



Additional Resources:

Preparing for the School Census Summer 2023 Return guide

Resetting All Class Types

To reset all class types (via the **Update Class Type** page), right-click the **Nursery** (or **Other**) column header, then select **Remove All** from the pop-up list. The **Nursery** (or **Other**) column is cleared of all ticks.

Re-enter the correct class types for all pupil/students as previously described.

Identifying which Pupils have no Class Type Specified

To ensure that all pupil/students are assigned to a class type (via the **Update Class Type** page), select **No Class Type** from the **Status** drop-down list in the **Pupils View** panel. Any pupil/students without a **Class Type** are displayed in the **Pupils** panel.

Specify a class type for these pupils, as previously described.

Editing Pupil/Students with Top-Up Funding

Top-up funding is supplied to schools, in most cases by the Local Authority, to meet the additional costs of support for high needs pupil/students.

The **Top-up Funding** panel enables you to record the on-roll pupil/students for whom your school is receiving top-up funding on census day.

If the pupil/students with top-up funding have been recorded previously via **Tools | Statutory Return Tools | Update Top-Up Funding**, the data is displayed in the **Top-up Funding** panel.

4 Top-up Funding						
Surname	Preferred Surname	Forename	YTI	Reg	SEN	Ever in
Ackton	Ackton	Charlotte	4	4SL		No
Mascott	Mascott	Peter	3	3TO		No
Selbourne	Selbourne	Piers	3	3TO		No

The information displayed in the **Top-up Funding** panel is read-only. Updating top-up funding information, e.g. adding or removing a pupil/student, must be done via the **Edit** button.

1. Click the **Edit** button to display the **Update Pupil (or Student)s with Top-up Funding** dialog. The pupil/students currently recorded as having top-up funding are displayed in the **Top-up Funding** list (located in the bottom half of the page).
2. Use the **Students On-Roll on Census Day** search criteria to locate the additional pupil/students you wish to record as having top-up funding.

TIP: Click the **Search** button to display a list of all pupil/students who have not been defined as having top-up funding. Alternatively, enter all or part of the required search criteria then click the **Search** button.

Term: Autumn 2022 Students On-Roll on Census Day

Surname: white Forename: YTI: All Reg: All

Preferred Surname: SEN: <Any> Ever in care at this school: <Any> Search

Surname	Preferred Surname	Forename	YTI	Reg	SEN	Ever in Care
White	White	Theo	4	4ES		No
Whitehead	Whitehead	William	6	6VC		No
Whitemore	Whitemore	Paige	4	4SL		No

- Highlight the pupil/student(s) who you want to record as having top-up funding, then click the **Add** button to move the selected pupil/student(s) to the **Top-up Funding** list.

One or more pupil/students can be selected using the **Ctrl+click** or **Shift+click** functionality.

Term: Autumn 2022 Students On-Roll on Census Day

Surname: white Forename: YTI: All Reg: All

Preferred Surname: SEN: <Any> Ever in care at this school: <Any> Search

Surname	Preferred Surname	Forename	YTI	Reg	SEN	Ever in Care
White	White	Theo	4	4ES		No
Whitemore	Whitemore	Paige	4	4SL		No

Top-up Funding Add Remove

Surname	Preferred Surname	Forename	YTI	Reg	SEN	Ever in Care
Ackton	Ackton	Charlotte	4	4SL		No
Mascott	Mascott	Peter	3	3TO		No
Selbourne	Selbourne	Piers	3	3TO		No
Whitehead	Whitehead	William	6	6VC		No

- To remove a pupil/student from the **Top-up Funding** list, highlight the required pupil/student, then click the **Remove** button. The pupil/student's record is moved to the **Students On-Roll on Census Day** list, from where it can be reselected, if required.
- Click the **Update** button to save the data and arrange the list of pupil/students in **Surname** order.
- Click the **OK** button located at the bottom right-hand side of the screen to return to the **Census Return Details** page, where the updated information is displayed in the **Top-up Funding** panel.

Editing Pupil/Student Post Looked After Arrangements

The Post Looked After Arrangements routine provides schools with the ability to record whether pupil/students who are on-roll on census day were looked after immediately before adoption or prior to being the subject of a residence or special guardianship order.

If the pupil/students with post looked after arrangements (PLAA) have been recorded previously via **Tools | Statutory Return Tools | Update Post Looked After Arrangements**, the data is displayed in the **Post Looked After Arrangements** panel.

1. Click the **Recalculate** button (in the **Post Looked After Arrangements** panel) to ensure that all pupil/students who already have a PLAA status are displayed.

Surname	Preferred Surname	Forename	YTI	Reg	Ever in C.	Ceased to be looked after through
Abhra	Abhra	Shaqib	4	4ES	No	Adoption from England and Wales
Muir	Muir	Ayiden	1	OAK	No	Adoption from England and Wales
Zanni	Zanni	Luca			No	Special guardianship order (SGO) from England and Wales

The information displayed in the **Post Looked After Arrangements** panel is read-only. Updating the information, e.g. editing the PLAA status or adding a pupil/student, must be done via the **Edit** button.

2. Click the **Edit** button to display the **Update Pupil (or Student)s Post Looked After Arrangements** page. Any pupil/students currently recorded as having PLAA are displayed in the **Post Looked After Arrangements** list located in the bottom half of the page.
3. Use the **Students On-Roll on Census Day** search criteria to locate the additional pupil/students you wish to record as having PLAA.

TIP: Click the **Search** button to display a list of pupil/students who have not been defined as having PLAA. Alternatively, enter all or part of the required search criteria then click the **Search** button.

Surname	Preferred Surname	Forename	YTI	Reg	Ever in Care
Carter	Carter	April	2	2GH	No
Carter	Carter	Ryan			No
Carter	Carter	Thomas	6	6VC	No

4. Highlight the pupil/students who you want to record as having PLAA, then click the **Add** button to move the selected pupil/students automatically to the **Post Looked After Arrangements** list.

One or more pupil/students can be selected using the **Ctrl+click** or **Shift+click** functionality.

Surname	Preferred Surname	Forename	YTI	Reg	Ever in Care	Ceased to be looked after through	Evidence Obtained
Abhra	Abhra	Shaqib	4	4ES	No	Adoption from England and Wales	<input type="checkbox"/>
Muir	Muir	Ayiden	1	OAK	No	Adoption from England and Wales	<input type="checkbox"/>
Zanni	Zanni	Luca			No	Special guardianship order (SGO) from England and Wales	<input type="checkbox"/>
Carter	Carter	April	2	2GH	No		<input checked="" type="checkbox"/>
Carter	Carter	Thomas	6	6VC	No		<input checked="" type="checkbox"/>

Post Looked After Arrangements

Adoption from England and Wales
 Adoption from state care outside of England and Wales
 Special guardianship order (SGO) from England and Wales
 Residence order (RO) from England and Wales
 Child arrangement order (CAO) from England and Wales

- For each pupil/student added to the **Post Looked After Arrangements** list, select the post looked after arrangement status by clicking in the applicable cell in the **Ceased to be looked after through** column, then selecting the required status from the drop-down list:
 - Adoption from England and Wales
 - Adoption from state care outside of England and Wales
 - Special guardianship order (SGO) from England and Wales
 - Residence order (RO) from England and Wales
 - Child arrangement order (CAO) from England and Wales.
- Select the **Evidence Obtained** check box if documents have been obtained that provide evidence of the post looked after arrangements.
 If you indicate that evidence has been obtained, ensure that the applicable documents are stored securely either outside of SIMS or within the Document Management Server.

NOTE: Evidence Obtained is not collected in the School Census return but should be recorded as proof of DfE/Ofsted compliance.

- To remove a name from the list, highlight it then click the **Remove** button. The record is moved to the **Students On-Roll on Census Day** list, from where it can be reselected, if required.
- Click the **Update** button to save the information and arrange the list of pupil/students in surname order.
 If you have indicated that evidence has been obtained, you are reminded to ensure that the necessary documents are stored securely outside of SIMS or within the Document Management Server.
- Click the **OK** button to continue.
- Click the **OK** button (located at the bottom right-hand side of the screen) to return to the **Census Return Details** page, where the updated information is displayed in the **Post Looked After Arrangements** panel.



Additional Resources:

Preparing for the School Census Autumn 2023 Return guide



More Information:

Post Looked After Arrangements Report on page 74

Updating Funding and Monitoring

Not applicable to Nursery schools

The pupil level Update Funding and Monitoring functionality is provided to enable schools to record aspects of the Education Recovery Package.

From 1 August 2023 schools should record tutoring that was delivered via any of the following National Tutoring Programme (NTP) delivery routes:

- tuition partners
- academic mentors
- school-led tutoring.

More information about the National Tutoring Programme is available on the GOV.UK website (<https://www.gov.uk/government/publications/national-tutoring-programme-ntp>).

The information can be recorded via the **Tools** menu and maintained at any time during the academic year.

The information required is based on individual pupil/students:

- Pupil/student in receipt of school-led tutoring programme: Applicable to all schools (except Nursery schools), with the appropriate year groups or age groups, i.e. pre-16. For pupil/students in National Curriculum Year Actual 1 to 11, or aged 5 to 15 as at 31/08/2023 in National Curriculum Year Actual 'X' for special schools. (Funding and Monitoring code = **01**.)
- Pupil/student in receipt of 16 to 19 tuition fund: Applicable to Secondary, All-Through and Pupil Referral Units or Alternative Provision schools with a sixth form. For pupil/students in National Curriculum Year Actual 12 and above with current single registration (**C**) or current main dual registration (**M**). Pupil Referral Units or Alternative Provision for any pupil/student with the following enrolment status: **C, M, F** or **O**. (Funding and Monitoring code = **21**.)
- Pupil/student repeating up to one full year of 16 to 19 funded provision: Applicable to Secondary, All-Through and Pupil Referral Units or Alternative Provision schools with a sixth form. For pupil/students in National Curriculum Year Actual 12 and above with current single registration (**C**) or current main dual registration (**M**). Pupil Referral Units or Alternative Provision for any pupil/student with the following enrolment status: **C, M, F** or **O**. (Funding and Monitoring code = **22**.)

Detailed guidance about the expectations and conditions attached to school-led tutoring funding is available on the GOV.UK website.

What Data should be entered?

*NOTE: Before entering tutoring hours, ensure that **Tutoring** is selected for applicable pupil/students only. When a tick is displayed, values can be entered in the corresponding 'cumulative hour' cells.*

The following table describes the values that should be entered in each 'hours' column.

	Cumulative Hrs at Aut Census	Cumulative Hrs at Spr Census	Cumulative Hrs at Sum Census	Cumulative Hrs at 31 Aug
Description of expected values	All hours of tutoring from 01/08/2023 to the Autumn census date (05/10/2023).	All hours of tutoring from 01/08/2023 to the Spring census date (18/01/2024). The number of hours entered must be greater than or equal to the Autumn hours.	All hours of tutoring from 01/08/2023 to the Summer census date (16/05/2024). The number of hours entered must be greater than or equal to the Spring hours.	All hours of tutoring from 01/08/2023 to the Summer census date plus any additional hours that occurred after the Summer census date. The number of hours entered must be greater than or equal to the Summer hours.
Scenario	Five hours tuition received from 01/08/2023 to 05/10/2023.	Three hours received after 05/10/2023 to 18/01/2024.	Two hours received after 18/01/2024 to 16/05/2024.	One additional hour after 16/05/2024 to 31/07/2024. Not applicable to the census but required for ESFA reporting.
Example values for each column	5	8	10	11

A red 'cumulative hours' cell indicates that the value entered has failed the validation. A message providing more details is displayed in the status bar at the bottom of the **Update Funding and Monitoring** page.

Editing Funding and Monitoring

If funding and monitoring details have been recorded previously via **Tools | Statutory Return Tools | Update Funding and Monitoring**, the information is displayed in the **Funding and Monitoring** panel.

Primary phase example of the Funding and Monitoring panel

Z Funding and Monitoring						
Name	YTI	Tutoring	Cumulative Hrs at Aut Census	Cumulative Hrs at Spr Census	Cumulative Hrs at Sum Census	Cumulative Hrs at 31 Aug
Abbott, Jessica	3	✓	5			
Abhra, Shaquib	3	✓	5			
Abrams, Paul	2	✓	5			
Ackton, Charlotte	3	✓	4.5			
Adams, Nancy	5	✓	0			

Secondary phase example of the Funding and Monitoring panel

5 Funding and Monitoring								
Name	YTI	16-19 Tuition Fund	Repeating Post-16 Year	Tutoring	Cumulative Hrs at Aut Census	Cumulative Hrs at Spr Census	Cumulative Hrs at Sum Census	Cumulative Hrs at 31 Aug
Aaron, Liz	11			✓	4			
Aaron, Sophie	11			✓	5			
Abhra, Abjit	7			✓	3			
Acton, Jordan	13	✓						
Chapman, Amber	8			✓				
Mollohan, Keara	7			✓				
Smith, Aria	9			✓				

NOTE: Only pupil/students with funding and monitoring information are displayed in the **Funding and Monitoring** panel.

1. Click the **Recalculate** button (in the **Funding and Monitoring** panel) to ensure that the latest details are displayed.
2. If you wish to update the information, click the **Edit** button to display the **Update Funding and Monitoring** page.

Primary phase example of the Update Funding and Monitoring page

Census																	
Academic Year	2022/2023 On roll and leavers from 01/08/2022 to 31/07/2023																
Effective Date	16/05/2022																
Pupils View																	
Age at 31/08/2022	All	YTI	All	Year Group	All	Reg	All	SEN	All	Deprivation Pupil Premium	All	FSM Ever6	All	Pupil Premium Indicator	All		
Name	Date of Birth	Age at 31/08/2022	YTI	Year Group	Reg	Enrolment Status	DOL	SEN	Dep PP	FSM6	PP Ind	Tutoring	Cumulative Hrs at Aut Census	Cumulative Hrs at Spr Census	Cumulative Hrs at Sum Census	Cumulative Hrs at 31 Aug	Notes
Abbas, Latif	11/11/2016	5	R	Year R	ELM	Single Registration				No							
Abbott, Jessica	17/02/2014	8	3	Year 3	3TO	Single Registration			2021/2022	Yes	2021/2022	✓	5				
Abhra, Shaquib	17/12/2013	8	3	Year 3	3TO	Single Registration				No		✓	5				
Abrams, Paul	15/12/2014	7	2	Year 2	2JB	Single Registration				No		✓	5				
Ackton, Charlotte	10/02/2014	8	3	Year 3	3CB	Single Registration				No		✓	4.5				
Ackton, Simon	12/12/2016	5	R	Year R	PL	Single Registration				No							
Adams, Nancy	18/12/2014	10	5	Year 5	5BB	Single Registration			2021/2022	Yes	2021/2022	✓	0				

Secondary phase example of the Update Funding and Monitoring page

Census																															
Academic Year		2022/2023		On roll and leavers from 01/08/2022 to 31/07/2023																											
Effective Date		13/05/2022																													
Students View																															
Age at 31/08/2022		All		YTI		All		Year Group		All		Reg		All		SEN		All		Deprivation Pupil Premium		All		FSMEVer6		All		Pupil Premium Indicator		All	
Students																															
Name	Date of Birth	Age at 31/08/2022	YTI	Year Group	Reg	Enrolment Status	DOL	SEN	Dep FP	FSM6	PP Ind	16-19 Tuition Fund	Repeating Post-16 Year	Starting New Programme	Tutoring	Cumulative Hrs at Aut Census	Cumulative Hrs at Spr Census	Cumulative Hrs at Sum Census	Cumulative Hrs at 31 Aug	Notes											
Aaron,Chris	01/09/2005	16	11	Year 11	11A	Single Registration			2021/2022	Yes	2021/2022																				
Aaron,Jason	08/03/2006	16	11	Year 11	11B	Single Registration				No																					
Aaron,Liz	01/09/2005	16	11	Year 11	11C	Single Registration			2021/2022	Yes	2021/2022				✓	4															
Aaron,Sophie	01/09/2005	16	11	Year 11	11D	Single Registration			2021/2022	Yes	2021/2022				✓	5															
Abdullah,Tamwar	12/01/2009	13	8	Year 8	8A	Single Registration		K		No																					
Abhra,Abjit	10/17/2005	17	12	Year 12	7A	Single Registration				No				✓						3											
Acton,Jordan	11/02/2004	18	13	Year 13	G	Single Registration			2017/2018	No	2017/2018	✓	✓	✓	✓																

- In the **Pupil (or Student) View** panel, specify the required filters. The content of the **Pupil (or Student)** panel changes to reflect the options selected.

Read-only pupil/student information is displayed in the columns on the left-hand side of the **Pupil (or Student)** panel. This information is shown as at the system date.

Cells with a white background are editable.

- If applicable, right-click anywhere in the **16-19 Tuition Fund** column, then select the required option from the pop-up menu.
 - If most or all of the pupil/students have been receiving tuition funding, select the **Check All** option.
 - Any pupil/students who have not been receiving tuition funding can then be deselected by clicking the **16-19 Tuition Fund** cell adjacent to their name.
- If applicable, specify which pupil/students are **Repeating Post-16 Year** by right-clicking anywhere in the column, then selecting the required option from the pop-up menu.

Bulk or Individual entry can be achieved using the same method as described for 16-19 tuition funding.

Where **Repeating Post-16 Year** has been ticked for a Year 13 and above pupil/student, a completed programme and an additional continuing programme is reported.

If a Year 12 pupil/student is repeating their Post 16 year, the **Starting New Programme** column is activated.

- If applicable, specify which Year 12 pupil/students are **Starting New Programme** by right-clicking anywhere in the column, then selecting the required option from the pop-up menu.

Where **Repeating Post-16 Year** has been ticked for a Year 12 pupil/student and **Starting New Programme** has also been ticked, the XML return file will report a completed programme and an additional continuing programme.

Where **Repeating Post-16 Year** has been ticked for a Year 12 pupil/student and **Starting New Programme** is not ticked, a continuing programme is reported.

7. Right-click anywhere in the **Tutoring** column, then select the required option from the pop-up menu.
 - a. If most or all of the pupil/students have been receiving school-led tutoring, select the **Check All** option.
 - b. Any pupil/students who have not been receiving school-led tutoring can then be deselected by clicking the **School Led Tuition** cell adjacent to their name.
8. When a tick is entered in a **Tutoring** cell, the corresponding 'cumulative hour' cells are then editable. The number of tutoring hours (to the nearest 0.5) that the pupil/student has received as at the applicable census date should be entered.

After entering a value in the **Cumulative Hrs at Aut Census** column it is possible to auto-populate the 'hours' cells to the right. The associated spring cell turns red.

When you click in (or tab to) the **Cumulative Hrs at Spr Census** cell, the autumn value is copied to all the 'hours' cells to the right. This value is the minimum cumulative hours possible.

These values can be edited when you know the hours that have been delivered for spring.

IMPORTANT NOTE: To deselect tutoring, all of the existing hours must be removed for the selected pupil/student(s). Clicking the **Undo** button reverts the changes, if required.

The cumulative Autumn hours only are reported in the Autumn census.

9. In the **Cumulative Hrs at 31 Aug** column, enter the total number of tutoring hours for the whole academic year up until 31 August, which includes the summer holidays. The value entered must be greater than or equal to that entered in the **Cumulative Hrs at Sum Census** column.

A red cell indicates that the value is less than that entered in the **Cumulative Hrs at Sum Census** column and must be amended.

NOTE: The values entered in the **Cumulative Hrs at 31 Aug** column are not reported in the census. This functionality has been provided to enable schools to record data required by the Education and Skills Funding Agency (ESFA) (<https://www.gov.uk/government/organisations/education-and-skills-funding-agency>).

10. Enter Notes, if required. This information is for your school's use and is not collected in the census.
11. Click the **Save** button and then click the **OK** button to return to the **Census Return Details** page.

NOTE: All validation errors (red cells) must be resolved before saving the data.

DfE guidance about Learner funding and monitoring (FAM) is available on the GOV.UK website (<https://www.gov.uk/guidance/complete-the-school-census>).

Managing School Dinners Taken on Census Day

Applicable to schools with pupils in Reception, Year 1 and Year 2

All pupils in Reception, Year 1 and Year 2 in English state-funded schools are offered a Universal Infant School Meal, i.e. a hot meal at lunchtime. This applies to Academies, Free Schools and Pupil Referral Units, as well as to schools maintained by the local authority. The School Census Autumn 2023 Return collects information about pupils who receive a Universal Infant School Meal (school dinner) on census day.

The **School Dinner Taken** panel displays all pupils in Reception, Year 1 and Year 2 who are on-roll on census day. The options available in the panel enable you to record pupils who have taken a Universal Infant School Meals on census day, so that accurate data can be included in the census.

NOTES: The **Reference Date** is provided so that your school can report school dinners taken on an alternative date to census day, if required.

The pupils listed in the **School Dinner Taken** panel are those who are on-roll on census day. Whereas the data calculated via the **Calculate From Attendance** and the **Calculate From Dinner Money** buttons is based on the reference date.

If your school uses SIMS Dinner Money or SIMS Attendance, the number of dinners taken on census day can be calculated using the data recorded when using these modules. If either or both modules are not in use, the applicable **Calculate From** button(s), as displayed in the following graphic, are not displayed but the information can be recorded manually.

School Dinner Taken

Reference Date: 06/10/2022

All pupils including those eligible for FSM should be included below

Group By

Calculate From Attendance

Calculate From Dinner Money

Surname	Forename	YTI	Reg Group	Enrol Status	School Dinner Taken
Abbott	Jessica	2	2JB	Single Registration	
Abhra	Shaqib	2	2JB	Single Registration	
Ackton	Charlotte	1	ELM	Single Registration	
Adams	Nancy	2	2GH	Single Registration	
Adams	Sadie	R	PINE	Single Registration	
Alala	Candis	1	OAK	Single Registration	
Alala	Michael	2	2GH	Single Registration	
Alyona	Tatyana	1	PINE	Single Registration	
Andrews	Richard	1	ELM	Single Registration	
Barden	Olivia	R	ASH	Single Registration	
Bartram	Piers	R	OAK	Single Registration	
Bateman	Vincent	R	PINE	Single Registration	
Bennet	Eloise	1	ASH	Single Registration	
Benson	Chantal	1	OAK	Single Registration	

Total Taken: 0 Total Not Taken: 178

Tick All

Reset

- By default, the **Reference Date** is set to 05/10/2023 (census day). If, due to exceptional circumstance, e.g. flooding, pupils were unable to take a school dinner on census day, the reference date can be changed to a date that reflects the situation. However, the reference date must be within the Autumn term date range.

03| Producing the School Census Autumn Return

2	Click the required column header to sort the data.
3	The Calculate From Attendance button is displayed only if SIMS Attendance is in use.
4	The Calculate from Dinner Money button is displayed only if SIMS Dinner Money is in use.
5	When the Reset button is clicked all existing ticks are removed from the School Dinner Taken column enabling you to start the process again.
6	The Total Taken and Total Not Taken provide an indication of whether the number of school dinners taken is correct or whether edits are required.

After the return has been created and validated, the School Dinner Taken detail report can be run to assist with the checking of results.



More Information:

School Dinner Taken Report on page 69

Using Dinner Money to Calculate School Dinners Taken on Census Day

If SIMS Dinner Money is in use, the Dinner Money data recorded for census day can be used to calculate the number of school dinners taken on census day.

Many users of SIMS Dinner Money also use SIMS Attendance. If this is the case the **Calculate From Attendance** button is also displayed.

However, it is recommended that the Calculate From Dinner Money routine is used in the first instance. This is because the Calculate From Attendance routine looks at all pupils with a present or late attendance mark on census day morning. These pupils could be taking any sort of meal on census day, e.g. going home for lunch, pack lunch brought from home, as well as meals provided by the school. The School Census return is only interested in school meals provided by the school.

SIMS Dinner Money takes into account these different meal types and populates the **School Dinner Taken** column with ticks where meals provided by the school only have been taken.

Surname	Forename	YTI	Reg Group	Enrol Status	School Dinner Taken
Abbott	Jessica	2	2JB	Single Registration	
Abhra	Shaquib	2	2JB	Single Registration	
Abrams	Paul	1	ELM	Single Registration	
Ackton	Charlotte	2	2GH	Single Registration	✓
Aditya	Zayan	R	PINE	Single Registration	✓
Ainsley	Charlotte	1	OAK	Single Registration	✓
Aljala	Michael	2	2GH	Single Registration	
Alberts	Courtney	1	PINE	Single Registration	
Andrews	Ching	1	ELM	Single Registration	✓
Andrews	Izabel	R	ASH	Single Registration	✓
Armitage	Elise	R	OAK	Single Registration	✓
Atkins	Austin	R	PINE	Single Registration	✓
Atkins	Portia	1	ASH	Single Registration	
Barnes	Isaac	1	OAK	Single Registration	✓

Total Taken: 91 Total Not Taken: 87

1. Click the **Calculate From Dinner Money** button.

WARNING: Clicking the **Calculate From Dinner Money** button overwrites all existing data in the **School Dinner Taken** panel.

If SIMS detects missing information, the following message is displayed:

Dinner Money information is incomplete. Please ensure that meals are recorded in Dinner Money.

2. Click the **Cancel** button to return to SIMS where the missing information can be entered or the **OK** button to continue.

A tick is entered against each pupil who is receiving any type of meal provided by the school on census day. These meals have a meal type category of **School Provided**, with a description such as hot school meal or school sandwich.

3. Edit the information by clicking the required row, in the **School Dinner Taken** column, to toggle between a tick and blank (no meal taken), as required.

Using Attendance to Calculate School Dinners Taken on Census Day

The School Census Return only requires information about school meals provided by the school on census day. However, if SIMS Attendance is in use, the attendance data recorded for census day morning can be used to calculate all pupils who are present and are likely to be taking a school dinner.

The information calculated from attendance can be edited to so that school meals provided by the school only are collected in the return.

1. Click the **Calculate From Attendance** button.

WARNING: Clicking the **Calculate From Attendance** button overwrites existing data in the **School Dinner Taken** panel.

If missing marks exist, a message is displayed:

Please ensure that registers have been taken. Missing marks have been interpreted as absent and no dinner taken.

2. Click the **Cancel** button to return to SIMS where missing marks can be entered or the **OK** button to continue.

A tick is entered against each pupil who is marked as present on census day morning (i.e. AM session). It is possible that some of these pupils are not taking meals provided by the school, e.g. they go home for dinner or bring a packed lunch from home. Meals provided by the school only are required for the return.

Use the **Group By** functionality to group pupils by **Year Taught In, Reg Group** or **Enrolment Status**, enabling school dinners taken information to be updated from class lists, etc.

3. Edit the information by clicking the required row, in the **School Dinner Taken** column, to toggle between a tick and blank (no meal taken), as required.

Using Manual Entry to Record School Dinners Taken on Census Day

If your school is not using SIMS Dinner Money or SIMS Attendance the number of school dinners taken on census day (i.e. meals provided by the school) can be entered manually.

1. Click the **Tick All** button to populate the **School Dinner Taken** column. All pupils are ticked indicating that they received a school dinner on census day.
2. Edit individual records by clicking the applicable **School Dinner Taken** cell to toggle between a tick and blank (no meal taken).

School Dinner Taken

Reference Date: 06/10/2022 All pupils including those eligible for FSM should be included below

Group By Calculate From Attendance Calculate From Dinner Money

Surname	Forename	YTI	Reg Group	Enrol Status	School Dinner Taken
Abbott	Jessica	2	2JB	Single Registration	
Abhra	Shaquib	2	2JB	Single Registration	
Abrams	Paul	1	ELM	Single Registration	
Ackton	Charlotte	2	2GH	Single Registration	✓
Aditya	Zayan	R	PINE	Single Registration	✓
Ainsley	Charlotte	1	OAK	Single Registration	✓
Alala	Michael	2	2GH	Single Registration	
Alberts	Courtney	1	PINE	Single Registration	
Andrews	Ching	1	ELM	Single Registration	✓
Andrews	Izabel	R	ASH	Single Registration	✓
Armitage	Elise	R	OAK	Single Registration	✓
Atkins	Austin	R	PINE	Single Registration	✓
Atkins	Portia	1	ASH	Single Registration	
Barnes	Isaac	1	OAK	Single Registration	✓

Total Taken: 91 Total Not Taken: 87

Tick All
 Reset

The **Total Taken** and **Total Not Taken** (located at the bottom of the panel) provide an indication of whether the number of school dinners taken is correct or whether further edits are required.

3. After the return has been created and validated, run the School Dinner Taken detail report and then check the report contents.
4. Continue editing until school dinner taken details are correct.

WARNING: Clicking the **Reset** button removes all existing ticks from the **School Dinner Taken** column.

Entering Attendance Information

Summer term attendance data (including attendance codes and the number of sessions missed) should be provided for non-boarder pupil/students aged four to 15 inclusive on 31/08/2022 who were on-roll for at least one session during each Summer half term, i.e. from 10/04/2023 to 28/05/2023 and 29/05/2023 to 31/07/2023.

IMPORTANT NOTE: Clicking the **Calculate All Details** button overwrites any edited data in every panel with the original data stored in SIMS. Do not use this button if you wish to keep any changes you have made.

After the **Calculate All Details** button is clicked, the information displayed in the **Attendance** panel is dependent on which of the following is applicable to your school:

- Attendance/Lesson Monitor is in use, the attendance codes being used are DfE compliant and there are either missing marks or no missing marks.
- Attendance/Lesson Monitor is in use and the attendance codes being used are DfE non-compliant.
- Attendance/Lesson Monitor is not in use.

SIMS Attendance/Lesson Monitor Users

If SIMS Attendance/Lesson Monitor is in use, data is collected on all categories of school attendance. Ensure that all missing marks and unexplained absences for the previous term have been dealt with before commencing the return.

*TIP: After the Create and Validate process is run, the Attendance detail report can be used to assist with the checking of attendance data. Select **Attendance Report** from the **Detail Report** drop-down list.*

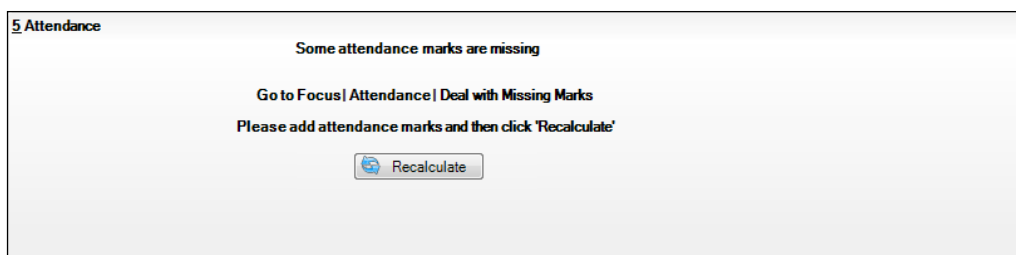
Are your Attendance Codes DfE Compliant?

If Attendance/Lesson Monitor is in use and your school is using DfE compliant attendance codes, attendance data is entered directly into the return, providing that there are no missing marks.

If all attendance marks have been entered in Attendance/Lesson Monitor, the following message is displayed in the **Attendance** panel, informing you that your attendance codes are DfE compliant but will be rechecked at the Create and Validate stage.



However, if any missing attendance marks are detected, the following message is displayed in the **Attendance** panel, requesting that you add the missing attendance marks.



03| Producing the School Census Autumn Return

1. Use the Deal with Missing Marks routine (**Focus | Attendance (or Lesson Monitor) | Deal with Missing Marks**) to locate the missing marks and enter appropriate attendance codes.
2. Return to the **Census Return Details** page and click the **Check missing marks** button in the **Attendance** panel to ensure that all missing marks have been dealt with.

NOTE: The Create and Validate process can still be run even if some attendance marks are missing. You will be asked if you wish to continue to create the return or cancel the Create and Validate process.

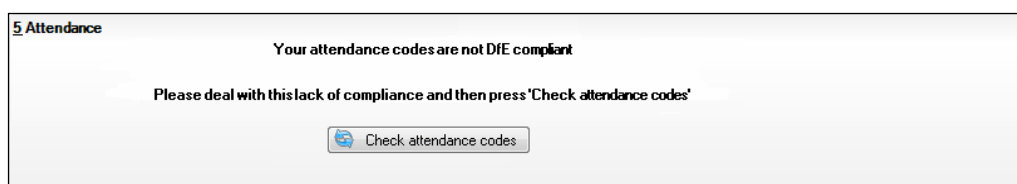


More Information:

Producing Detail Reports on page 66

Are your Attendance Codes DfE Non-Compliant?

If Attendance/Lesson Monitor is in use but one or more invalid attendance codes have been detected, a message is displayed in the **Attendance** panel to inform you that your attendance codes are not DfE compliant.



1. Non-compliant codes must be dealt with. Please contact your Local Support Unit for assistance.
2. Click the **Check attendance codes** button to check that DfE attendance codes are now in use.

If the attendance codes are now DfE compliant, a message informs you that the codes will be rechecked at the **Create & Validate** stage.

3. Click the **OK** button to continue.

SIMS Attendance/Lesson Monitor Not in Use

If Attendance/Lesson Monitor is not in use, the following data must be entered manually for the two specified collection periods, i.e. from 10/04/2023 to 28/05/2023 and 29/05/2023 to 31/07/2023:

- Total Possible Sessions (**T Poss Sessions**)
- Total Sessions Missed due to Authorised Absence (**T Auth Absences**)
- Total Sessions Missed due to Unauthorised Absence (**T Unauth Absences**)
- Total number of sessions attending approved educational activity (**T AEA Sessions**)
- Total number of sessions unable to attend due to exceptional circumstances (**T Excep Sessions**)
- Total number of sessions unable to attend due to Coronavirus (**T Corona Sessions**).

- To filter the display of pupil/students in the **Attendance** panel, select **Year Group, Registration Group** or **Enrolment Status** from the **Group By** drop-down list.

Alternatively, select **Group by None** to display a list of all pupil/students.

Attendance

Attendance Application not in use. Manual entry is required.

Group By Attendance Collection Period (18/04/2022-29/05/2022)

Surname	Forename	YTI	Reg Group	Enrol Status	T Poss Sessions	T Auth Absences	T Unauth Absences	T AEA Sessions	T Excep Sessions	T Corona Se
▶ Abbas	Latif			On Roll	0	0	0	0	0	0
Abbott	Jessica			On Roll	0	0	0	0	0	0
Abhra	Shaquib			On Roll	0	0	0	0	0	0
Abhra	Alisha			On Roll	0	0	0	0	0	0
Abhra	Abjit			On Roll	0	0	0	0	0	0
Abrams	Paul			On Roll	0	0	0	0	0	0
Ackton	Charlotte			On Roll	0	0	0	0	0	0
Ackton	Stan			On Roll	0	0	0	0	0	0
Adams	Sadie			On Roll	0	0	0	0	0	0
Adams	Nancy			On Roll	0	0	0	0	0	0
Aditya	Zayan			On Roll	0	0	0	0	0	0
Ainsley	Charlotte			On Roll	0	0	0	0	0	0
Akeman	Steven			On Roll	0	0	0	0	0	0

Group By Attendance Collection Period (30/05/2022-31/07/2022)

Surname	Forename	YTI	Reg Group	Enrol Status	T Poss Sessions	T Auth Absences	T Unauth Absences	T AEA Sessions	T Excep Sessions	T Corona Se
▶ Abbas	Latif			On Roll	0	0	0	0	0	0
Abbott	Jessica			On Roll	0	0	0	0	0	0
Abhra	Shaquib			On Roll	0	0	0	0	0	0
Abhra	Alisha			On Roll	0	0	0	0	0	0
Abhra	Abjit			On Roll	0	0	0	0	0	0
Abrams	Paul			On Roll	0	0	0	0	0	0
Ackton	Charlotte			On Roll	0	0	0	0	0	0
Ackton	Stan			On Roll	0	0	0	0	0	0
Adams	Sadie			On Roll	0	0	0	0	0	0
Adams	Nancy			On Roll	0	0	0	0	0	0
Aditya	Zayan			On Roll	0	0	0	0	0	0
Ainsley	Charlotte			On Roll	0	0	0	0	0	0
Akeman	Steven			On Roll	0	0	0	0	0	0

- To sort the displayed data by surname, forename, year group, registration group or enrolment status, click the appropriate column heading.
- For each pupil/student, enter the total number of sessions applicable in each column for each of the two collection periods.
- To clear the attendance information and check for additional pupil/students, click the **Check for additional students & zero totals** button.

WARNING: If the **Check for additional students & zero totals** button is clicked, any attendance data entered manually is lost.

Checking Post 16 Learning Aims Data

The Post 16 Learning Aims are collected once a year only, in the School Census Autumn Return. Learning Aims are collected from the previous year, i.e. any that were active in 2022/2023, and those for the current academic year 2023/2024.

All Learning Aims in the specified period (01/08/2022 to 05/10/2023) are included in the return, regardless of whether the minimum qualifying period of six weeks, for a one or two year course, was achieved.

03| Producing the School Census Autumn Return

Exam results, e.g. A, A*, etc. and the outcome of the previous year's Learning Aims (pass, fail or result not known) are not collected in this year's Autumn return. However, results are displayed in the **Learning Aims** panel for identification purposes only, provided that the **Use Exam Result to determine QAN/Discount code** check box has been selected (in the **Source for Learning Aims Planned End Date** dialog) when calculating all details.

Discount Codes (also known as Subject Classification Code) are collected in the School Census Autumn 2023 Return.

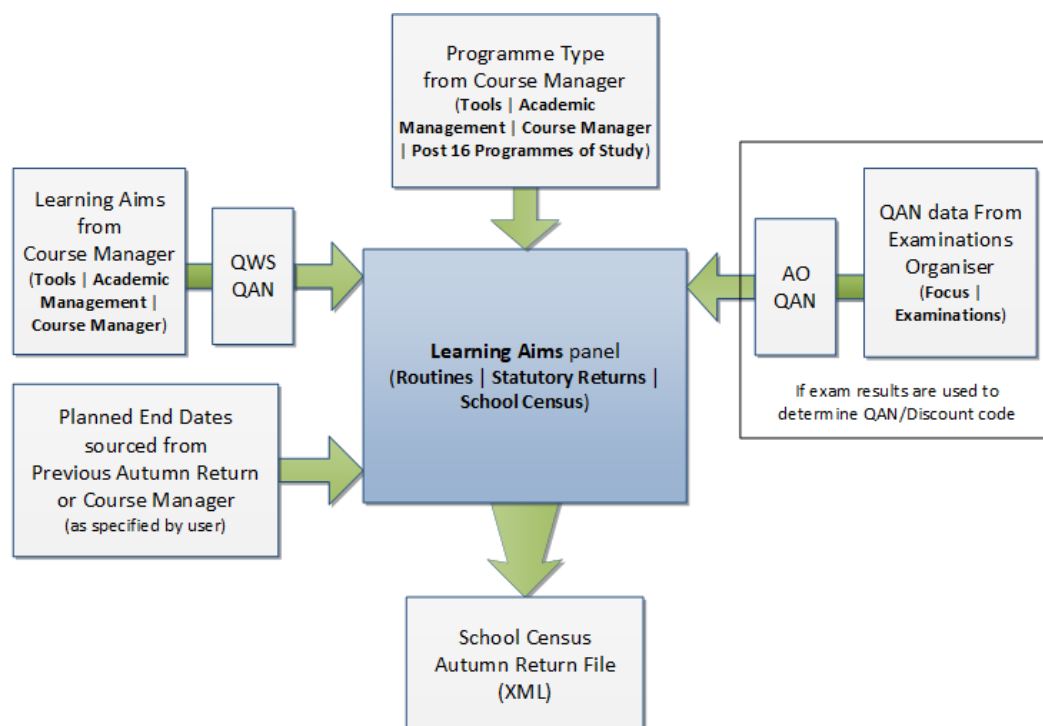
IMPORTANT NOTES:

Learning Aims are required for learners in National Curriculum Year Group (Year Taught In) 12 or above, who have an enrolment status of Single Registration or Dual Registration, and for whom the school wishes to claim Post 16 funding from the Education and Skills Funding Agency (ESFA).

Learners are expected to be in National Curriculum Year 12 and above if the majority of their learning is at level 3 or above.

Students in Actual National Curriculum Year Group 11 (or below) with the majority of their learning at level 2 are no longer included in the return.

The **Learning Aims** panel is provided to enable you to check the Learning Aims that will be included in the School Census Autumn 2023 Return.



In the previous graphic, QWS QAN refers to the Qualification Accreditation Number obtained from the DfE QAN website and AO QAN refers to the Awarding Organisation QAN imported with the Exams Basedata from the Awarding Organisation.

The **Learning Aims** panel includes the following functionality:

- **QAN** - also known as Qualification Number (QN).
- **Discount Code** - also known as Subject Classification Code (SCC).
- **Result** for identification purposes only.
- Comprehensive filtering of data (please see *Finding your way Around the Learning Aims Panel* on page 49).
- Recalculating data in the **Learning Aims** panel refreshes the display with data from Course Manager and Examinations Organiser. Any saved edits are preserved when the Recalculate routine is run (please see *Recalculating Learning Aims Information* on page 54).
- The provision of the following reports to assist with the checking of information:
 - Learning Aims Comparison with Course Manager report (please see *Comparing Learning Aims Information with Course Manager Data* on page 54).
 - Learning Aims Comparison with the Previous Autumn report (please see *Comparing Learning Aims Information with the Previous Autumn Data* on page 53).
- By default, the data in the **Learning Aims** panel cannot be edited. Full editing of the Learning Aims start date, end date, planned end date, core aim, status, withdrawal reason, QAN, discount code, provider UKPRN and traineeship, can be achieved by clicking the **Padlock** icon to unlock the **Learning Aims** panel. A white background indicates that the column can be edited.



Locked/Unlocked Padlock icon

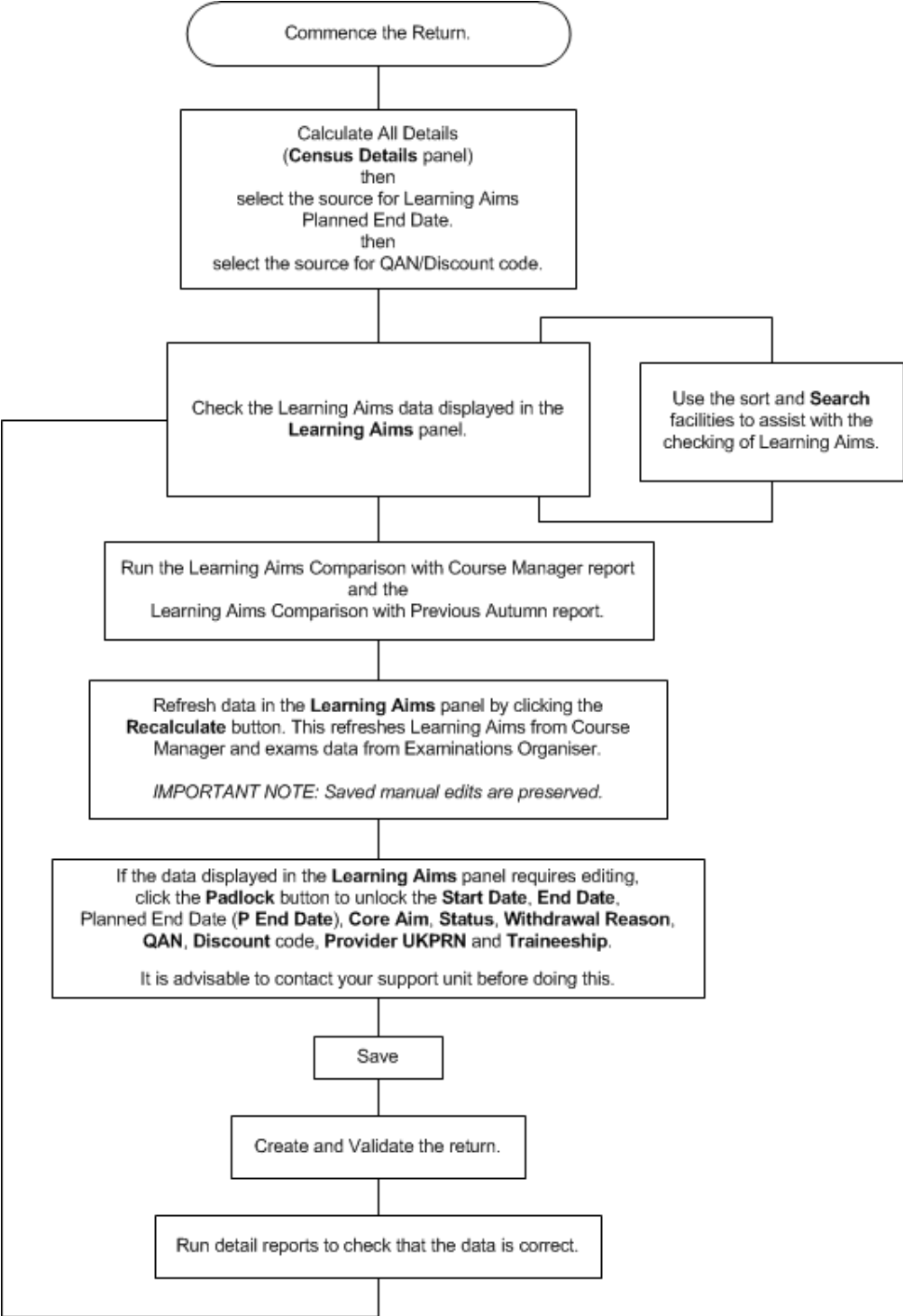


Additional Resources:

Preparing Post 16 Data for the School Census Autumn 2023 Return preparation guide

Learning Aims Flow

Before commencing the return, you must ensure that your Post 16 programmes of study are calculated for the return you are running. The programmes of study can be calculated via **Tools | Academic Management | Course Manager | Post 16 Programme of Study**.



Finding your way Around the Learning Aims Panel

The Learning Aims panel includes the following components:

- 1**: Surname input field
- 2**: Forename input field
- 3**: YTI dropdown menu
- 4**: ULN input field
- 5**: QAN input field
- 6**: Disc Code input field
- 7**: Search button
- 8**: Status dropdown menu
- 9**: From date input (01/08/2021)
- 10**: To date input (06/10/2022)
- 11**: Select Columns button
- 12**: Compare with Previous Autumn button
- 13**: Compare with Course Manager button
- 14**: Add button
- 15**: Exclude button
- 16**: Recalculate button
- 17**: Lock icon
- 18**: Table header row
- 19**: Total: 695 label
- 20**: Table body rows
- 21**: Table scroll bar

Surname	Forena...	YTI	ULN	Subject	Level	Start Date	End Date	P End Date	Core...	Status	Withdrawal Re...	QAN	Disc...	Provider UK...	Trainee...	Programme...	Result
Acton	Jordan	13	5142336...	Chemistry	GCE Advanced Two Year...	03/09/2020	22/07/2022	31/07/2022		Compl...		60152...	1110			Study Progr...	
Acton	Jordan	13	5142336...	Mathematics	GCE Advanced Two Year...	03/09/2020	22/07/2022	31/07/2022		Compl...		60311...	2210			Study Progr...	
Acton	Jordan	13	5142336...	Physics	GCE Advanced Two Year...	03/09/2020	22/07/2022	31/07/2022		Compl...		60147...	1210			Study Progr...	
Adams	Adam	13	5142335...	Chemistry	GCE Advanced Two Year...	02/09/2021		31/07/2023		Contin...		60152...	1110			Study Progr...	
Adams	Adam	13	5142335...	English	GCE Advanced Two Year...	02/09/2021		31/07/2023		Contin...		60146...	5030			Study Progr...	
Adams	Adam	13	5142335...	Mathematics	GCE Advanced Two Year...	02/09/2021		31/07/2023		Contin...		60311...	2210			Study Progr...	
Adams	Adam	13	5142335...	Physics	GCE Advanced Two Year...	02/09/2021		31/07/2023		Contin...		60147...	1210			Study Progr...	
Adams	George	13	1111166...	Geography	GCE Advanced Two Year...	03/09/2020	22/07/2022	31/07/2022		Compl...		60189...	3910			Study Progr...	
Adebayi	Emman...	13	5142336...	Art	GCE Advanced Two Year...	03/09/2020	22/07/2022	31/07/2021		Compl...		60144...	3510			Study Progr...	
Adebayi	Emman...	13	5142336...	Computer Scie...	GCE Advanced Two Year...	03/09/2020	22/07/2022	31/07/2022		Compl...		60145...	2610			Study Progr...	
Adebayi	Emman...	13	5142336...	Mathematics	GCE Advanced Two Year...	03/09/2020	22/07/2022	31/07/2022		Compl...		60311...	2210			Study Progr...	
Adebayi	Emman...	13	5142336...	Physics	GCE Advanced Two Year...	03/09/2020	22/07/2022	31/07/2022		Compl...		60147...	1210			Study Progr...	
Americana	Kari	13	5142336...	Construction	BTEC Certificate Level 3	03/09/2020	22/07/2022	31/07/2022		Compl...		50071...	TG1			Study Progr...	
Americana	Kari	13	5142336...	History	GCE Advanced Two Year...	03/09/2020	22/07/2022	31/07/2022		Compl...		60149...	4010			Study Progr...	
Americana	Kari	13	5142336...	Physics	GCE Advanced Two Year...	03/09/2020	22/07/2022	31/07/2022		Compl...		60147...	1210			Study Progr...	
Anderson	Ethan	13	1111165...	Construction	BTEC Certificate Level 3	03/09/2020	22/07/2022	31/07/2022		Compl...		50071...	TG1			Study Progr...	
Anderson	Ethan	13	1111165...	French	GCE Advanced Two Year...	03/09/2020	22/07/2022	31/07/2022		Compl...		60187...	5650			Study Progr...	
Andrews	Jasmine	13	5142336...	Construction	BTEC Certificate Level 3	03/09/2020	22/07/2022	31/07/2022		Compl...		50071...	TG1			Study Progr...	
Andrews	Jasmine	13	5142336...	Physics	GCE Advanced Two Year...	03/09/2020	22/07/2022	31/07/2022		Compl...		60147...	1210			Study Progr...	
Andrews	Jasmine	13	5142336...	Product Design	GCE Advanced Two Year...	03/09/2020	22/07/2022	31/07/2022		Compl...		50022...	9080			Study Progr...	
Ankonkule	Cheryl	13	5142365...	Art	GCE Advanced Two Year...	03/09/2020	22/07/2022	22/07/2021		Compl...		60144...	3510			Study Progr...	
Ankonkule	Cheryl	13	5142365...	Geography	GCE Advanced Two Year...	03/09/2020	22/07/2022	31/07/2022		Compl...		60189...	3910			Study Progr...	
Anton	Tiger	13	5142336...	Mathematics	GCE Advanced Two Year...	03/09/2020	22/07/2022	31/07/2022		Compl...		60311...	2210			Study Progr...	
Anton	Tiger	13	5142336...	Physical Ed.	GCE Advanced Two Year...	03/09/2020	22/07/2022	31/07/2022		Compl...		60186...	7210			Study Progr...	

1	To sort the displayed data by column data, e.g. Surname, Forename, YTI, ULN , etc, click the applicable column heading.
2	The Compare with Previous Autumn report can be run to compare the Learning Aims in the School Census Autumn 2022 Return with the Learning Aims to be reported in the School Census Autumn 2023 Return. The differences are highlighted in yellow (please see <i>Comparing Learning Aims Information with the Previous Autumn Data</i> on page 53).
3	The Compare with Course Manager report can be run to compare Learning Aims to be reported in the School Census Autumn 2023 Return with data held in Course Manager (please see <i>Comparing Learning Aims Information with Course Manager Data</i> on page 54).
4	The Add button is active only when the Unlock Padlock icon is displayed. Learning Aims records can be added to the list by clicking the Add button to display the Add Learning Aims dialog, from where the required student's Learning Aim(s) can be selected (please see <i>Adding a New Learning Aim Record</i> on page 58).
5	<p>The Exclude/Restore toggle button is active only when the Unlock Padlock icon is displayed. A Learning Aim record can be excluded from the list, and consequently from the return, by highlighting it then clicking the Exclude button. The excluded Learning Aim record is then highlighted in dark grey and is read-only.</p> <p>To restore the Learning Aim record, click the record to ensure that the focus is on the Learning Aim then click the Restore button (please see <i>Excluding Learning Aim Records</i> on page 61).</p>
6	<p>The data in the Learning Aims panel can be filtered using one or more of the Search options, i.e. Surname, Forename, YTI (Year Taught In), ULN, QAN, Discount Code (Disc Code), Subject, Level, Status and date range (by default From 01/08/2022 To 05/10/2023).</p> <p>Using these filters restricts the data displayed in the Learning Aims panel only. They do not restrict the data that is collected in the School Census. To view all the Learning Aims data that is collected in the School Census, remove all filter conditions then click the Search button.</p>
7	<p>Clicking the Recalculate button refreshes the Learning Aims panel with Learning Aims from Course Manager and exams data from Examinations Organiser (please see <i>Recalculating Learning Aims Information</i> on page 54).</p> <p><i>IMPORTANT NOTE: Clicking the Recalculate button preserves any manual edits that have already been saved (Learning Aims panel only).</i></p>
8	<p>The Programme Type column displays the programme type values collected from the Programmes of Study screen (Tools Academic Management Course Manager Post-16 Programmes of Study).</p> <p>The read-only column has been provided to display which Programme Type is associated with each Learning Aim.</p>

9	<p>The Locked Padlock icon indicates that editing of Learning Aims data is <u>unavailable</u>. Click the Padlock icon to toggle between locked and unlocked. It is advisable to check with your support unit before unlocking the Learning Aims.</p> <p>If you wish to edit the Learning Aims data, including adding and/or excluding Learning Aim records, ensure that the Unlocked Padlock icon is displayed. Full editing capabilities are then available for the data in the rows displayed with a white background (please see <i>Editing Learning Aim Details</i> on page 56).</p>
10	<p>The Result column is displayed only if the Use Exam Result to determine QAN/Discount code check box has been selected (in the Source for Learning Aims Planned End Date dialog) when calculating all details.</p> <p>The data in the Result column is displayed for reference only. Exam Results are not collected in the Autumn 2023 Return.</p>
11	<p>A Traineeship is an education and training programme. Traineeships (designed for 16 to 24 year olds) include the work preparation training, English and/or Maths and the work experience needed to secure an apprenticeship or employment.</p> <p>An indication as to whether each Post 16 Learning Aim is part of a Traineeship is required for the School Census Autumn Return. The indicator can be set in the Membership and Results panel via Tools Academic Management Course Manager Maintain Course.</p>
12	<p>The AO QAN and Discount code are reported in the census where an exam result exists. QWS QANs are reported only where an exam result is not available. The AO QAN and QWS QAN for the student can be viewed by selecting Focus Student Courses, double-clicking the required course to display the Course Details page then navigating to the Memberships and Results panel.</p>
13	<p>The DfE/ESFA use the QAN for matching the Learning Aim. The QAN data is included in the On Roll Learning Aims report and Leavers Learning Aims report (please see <i>Producing Detail Reports</i> on page 66).</p>
14	<p>The Provider UKPRN (sub-contracting UK partner) should be recorded where the school sub-contracts the provision of learning or training for post 16 pupil/students.</p>
15	<p>The reason for withdrawal is required for Learning Aims ending in the collection period.</p> <p>When a pupil/student has withdrawn from a Learning Aim prior to the census day, the Learning Aim is recorded with a completion status of Withdrawn. The reason for withdrawal should also be recorded.</p>
16	<p>The Status shows if a Learning Aim has been completed, withdrawn or is continuing. A cell with a yellow background is highlighted when the status has been edited manually (please see <i>Editing Learning Aim Details</i> on page 56). A yellow highlight does <u>not</u> indicate an error.</p>

<p>17</p>	<p>The Core Aim is the primary Learning Aim being undertaken in a student's programme of study. The School Census Autumn 2023 requires that the core aim is identified for each year where a vocational Education and Skills Funding Agency (ESFA) study programme is being followed. If a student is following an academic programme, a core aim does not need to be identified.</p> <p>It is possible to have a different Core Aim for 2022/2023 than for 2023/2024. Although Course Management only allows one Core Aim per student per academic year, there are certain unusual circumstances where more than one Core Aim is allowed. The additional Core Aims can be entered directly into this panel by clicking the Add button then completing the details in the different columns.</p>
<p>18</p>	<p>The Planned End Date (P End Date) included in the return must always be the date agreed when the Learning Aim commenced and must not reflect any change of plan for the Learning Aim. The only reason for changing the Planned End Date in the return is that it was entered incorrectly in the first place and even then, it would be best to leave it as first entered unless it results in distortion, e.g. ends in August or in the wrong academic year.</p> <p>If plans change and the pupil/student is expected to complete the Learning Aim <u>earlier</u> than the Planned End Date agreed when the Learning Aim commenced, that Planned End Date is not changed but this earlier than originally expected end date is eventually reflected in the actual End Date.</p> <p>If plans change and the pupil/student is expected to complete the Learning Aim <u>later</u> than the Planned End Date agreed when the Learning Aim commenced, that Planned End Date is not changed but this later than originally expected end date is eventually reflected in the actual End Date.</p> <p>If the planned end date has been overwritten with data from the previous Autumn return, the cell is highlighted in yellow.</p>
<p>19</p>	<p>The Total number of Learning Aim records is displayed at the bottom left-hand side of the Learning Aims panel.</p>
<p>20</p>	<p>Double-clicking a pupil/student's name displays the Student Courses page, where all student Learning Aims are displayed. Clicking one of these Learning Aims displays the Members panel on the Course Details page (Tools Academic Management Course Manager Maintain Course), where edits can be made to the Learning Aim record.</p>
<p>21</p>	<p>Clicking the Select Columns button displays the Select Student Column to Display dialog, where columns can be selected or deselected. This provides additional data for information only. Select from YTI, Reg, Ad No, ULN, UCI and Int Cand No. The YTI and ULN columns are displayed by default. The data in these columns is read-only.</p>

NOTE: This panel is not suitable for adding, editing or removing learning aims for work placements. Learning aims for work placements should be added, edited or removed via Maintain Course only.

Comparing Learning Aims Information with the Previous Autumn Data

The Learning Aims Comparison with the Previous Autumn report is provided for checking purposes only. This routine enables you to check that the data for the return is accurate and that any manual edits that have been made are correct. It enables you to compare the Learning Aims reported for the School Census Autumn 2022 with the Learning Aims to be reported for the School Census Autumn 2023.

The data displayed in the report will be included in the School Census Autumn 2023 Return unless it is updated using one of the methods provided in the **Learning Aims** panel.

The report displays the following information:

- Each pupil/student's surname and forename, YTI (Year Taught In), UPN, ULN, subject, level, QAN and discount code.
- The start date, end date, planned end date and completion status for each Learning Aim to be reported for Autumn 2023.
- The start date, end date, planned end date and completion status for each Learning Aim reported for Autumn 2022.

A cell with a yellow background highlights a difference between the data reported for Autumn 2022 and the data to be reported for Autumn 2023. A yellow highlight does not indicate an error.

IMPORTANT NOTE: This report reflects the data from the **Learning Aims** panel and not the values held in Course Manager.

1. Ensure that the School Census data has been saved before running the report.
2. Click the **Compare with Previous Autumn** button to generate the report, which is displayed in your web browser, from where it can be printed, if required.

School Census Autumn 2022 (Compare with Previous Autumn)																
Security Message :This report contains sensitive information.																
Report criteria : Learning Aims to be reported for School Census Autumn 2022 compared with the learning aims reported for the previous Autumn Census (2021)																
Total Students : 219																
Authorised Autumn 2021 School Census : School Census Autumn 2021 8234321_SC3_823LL21_002.XML																
Autumn School Census 2022 : School Census Autumn 2022 8234321_SC3_823LL22_001.UNA																
Report created 13/05/2022 16:10:09																
To be reported for Autumn 2022																
Surname	Forename	YTI	UPN	ULN	Subject	Level	QAN	Discount Code	Start Date	End Date	Planned End Date	Completion Status	Start Date	End date	Planned End Date	Completion Status
Roton	Jordan	13	18020200106000	5142338630	Physics	GCE Advanced Two Year Course	80147477	1210	03/09/2020	22/07/2022	31/07/2022	Completed	03/09/2020	-	31/07/2022	Continuing
Roton	Jordan	13	18020200106000	5142338630	Chemistry	GCE Advanced Two Year Course	80152542	1110	03/09/2020	22/07/2022	31/07/2022	Completed	03/09/2020	-	31/07/2022	Continuing
Roton	Jordan	13	18020200106000	5142338630	Mathematics	GCE Advanced Two Year Course	80311842	2210	03/09/2020	22/07/2022	31/07/2022	Completed	03/09/2020	-	31/07/2022	Continuing
Adams	Adam	13	18020200106003	5142338537	English	GCE Advanced Two Year Course	80145400	8030	02/09/2021	-	31/07/2023	Continuing	02/09/2021	-	31/07/2023	Continuing
Adams	Adam	13	18020200106003	5142338537	Physics	GCE Advanced Two Year Course	80147477	1210	02/09/2021	-	31/07/2023	Continuing	02/09/2021	-	31/07/2023	Continuing
Adams	Adam	13	18020200106003	5142338537	Chemistry	GCE Advanced Two Year Course	80152542	1110	02/09/2021	-	31/07/2023	Continuing	02/09/2021	-	31/07/2023	Continuing
Adams	Adam	13	18020200106003	5142338537	Mathematics	GCE Advanced Two Year Course	80311842	2210	02/09/2021	-	31/07/2023	Continuing	02/09/2021	-	31/07/2023	Continuing



More Information:

Producing Detail Reports on page 66

Producing the Summary Report on page 77

Comparing Learning Aims Information with Course Manager Data

The Learning Aims Comparison with Course Manager report is provided for checking purposes only. It enables you to compare Learning Aims reported for the School Census Autumn 2023 Return with data held in Course Manager.

The report displays the following information:

- Each pupil/student's surname and forename, YTI (Year Taught In), UPN, subject, level, QAN and discount code.
- The start date, end date, planned end date, core aim, completion status, withdrawal reason, provider and traineeship for each Learning Aim to be reported for Autumn 2023.
- The start date, end date, planned end date, core aim, completion status, withdrawal reason, provider, traineeship, AO QAN/discount code and QWS QAN/discount code for each Learning Aim held in Course Manager.

A cell with a yellow background highlights a difference between the data to be reported for the School Census Autumn 2023 Return and that currently held in Course Manager. A yellow highlight does not indicate an error.

1. Ensure that the School Census data has been saved before running the report.
2. Click the **Compare with Course Manager** button to generate the report, which is then displayed in your web browser, from where it can be printed, if required.

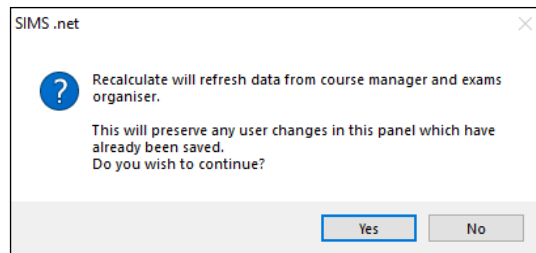
School Census Autumn 2022 (Learning Aims Comparison with Course Manager)																									
Security Message : This report contains sensitive information.																									
Report criteria : Learning Aims to be reported for School Census Autumn 2022 compared with course manager																									
Total Students : 219																									
Report created 12/05/2022 13:01:00																									
Surname	Forename	YTI	UPN	Subject	Level	To be reported for Autumn 2021						Course Manager													
						QAN	Disc	Start Date	End Date	P End Date	Core Aim	Status	Withdrawal Reason	Provider	Traineeship	Start Date	End date	P End Date	Core Aim	Status	Withdrawal Reason	Provider	Traineeship	AO QAN/Disc	QWS QAN/Disc
Abdess	Graham	13	M823432113104	General Studies	SCE Advanced Two Year Course	00021846	7810	02/09/2020	22/07/2021	31/07/2022	Completed	-	-	-	02/09/2020	22/07/2022	22/07/2022	Completed	-	-	-	-	-	-	50021846/7810
Abdess	Graham	13	M823432113104	Health & Social	SCE Advanced Two Year Course	00052870	0003	02/09/2020	22/07/2021	31/07/2022	Completed	-	-	-	02/09/2020	22/07/2022	22/07/2022	Completed	-	-	-	-	-	-	50052870/0003
Abbey	Sean	13	C823432113105	General Studies	SCE Advanced Two Year Course	00021846	7810	02/09/2020	22/07/2021	31/07/2022	Completed	-	-	-	02/09/2020	22/07/2022	22/07/2022	Completed	-	-	-	-	-	-	50021846/7810
Abbey	Sean	13	C823432113105	Geography	SCE Advanced Two Year Course	0018940X	3910	02/09/2020	22/07/2021	31/07/2022	Completed	-	-	-	02/09/2020	22/07/2022	22/07/2022	Completed	-	-	-	-	-	0018940X/3910	50018940X/3910
Abbey	Sean	13	C823432113105	Law	SCE Advanced Two Year Course	00310091	4770	02/09/2020	22/07/2021	22/07/2022	Completed	-	-	-	02/09/2020	22/07/2022	22/07/2022	Completed	-	-	-	-	-	00310091/4770	-
Aston	Jordan	12	M820200100080	Physics	SCE Advanced Two Year Course	00147477	1210	03/09/2021	-	31/07/2023	Continuing	-	-	-	03/09/2021	31/07/2023	31/07/2023	Continuing	-	-	-	-	-	-	50014747/1210

Recalculating Learning Aims Information

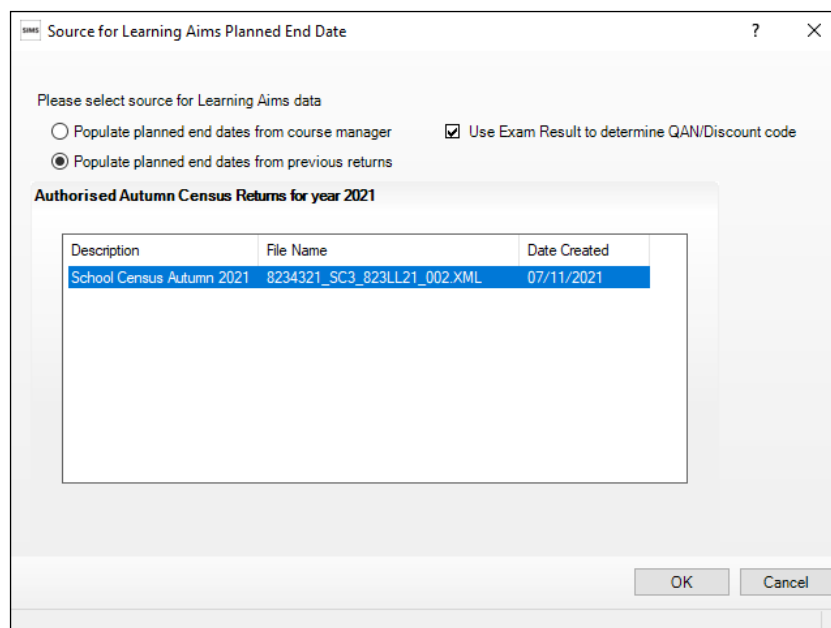
The data displayed in the **Learning Aims** panel can be refreshed with data retrieved from Course Manager and Examinations Organiser. Any edits you have made in the **Learning Aims** panel are preserved during the Refresh process, provided they have been saved.

If the data retrieved from Course Manager and Examinations Organiser is different to that originally displayed in the **Learning Aims** panel, the applicable cell is highlighted with a bright yellow background. A yellow highlight does not indicate an error.

1. Ensure that any data that has been edited in the **Learning Aims** panel has been saved. Saved changes are preserved when the data is recalculated.
2. Click the **Recalculate** button to display the Recalculate message.



3. Click the **Yes** button to display the **Source for Learning Aims Planned End Date** dialog.



4. If you want to **Use Exam Result to determine QAN/Discount code**, ensure that the associated check box is selected.
5. Specify the required source for the Learning Aims data:
 - **Populate planned end dates from previous returns** (default option)
Ensure that the **Populate planned end dates from previous returns** radio button is selected, then highlight the required **Authorised Autumn Census Return for year 2022**.
 - **Populate planned end dates from course manager**
Select the **Populate planned end dates from course manager** radio button.

03| Producing the School Census Autumn Return

- Click the **OK** button to update the data displayed in the **Learning Aims** panel.

Surname	Forename	YTI	ULN	Subject	Level	Start Date	End Date	P End Date	Core	Status	Withdrawal Re.	QAN	Disc.	Provider UK	Trainee	Programme	Result
Acton	Jordan	13	5142336	Chemistry	GCE Advanced Two Year...	03/09/2020	22/07/2022	31/07/2022		Compl...		60152	1110				
Acton	Jordan	13	5142336	Mathematics	GCE Advanced Two Year...	03/09/2020	22/07/2022	31/07/2022		Compl...		60311	2210				
Acton	Jordan	13	5142336	Physics	GCE Advanced Two Year...	03/09/2020	22/07/2022	31/07/2022		Compl...		60147	1210				
Adams	Adam	13	5142335	Chemistry	GCE Advanced Two Year...	02/09/2021		31/07/2023		Contin...		60152	1110				
Adams	Adam	13	5142335	English	GCE Advanced Two Year...	02/09/2021		31/07/2023		Contin...		60146	5030				
Adams	Adam	13	5142335	Mathematics	GCE Advanced Two Year...	02/09/2021		31/07/2023		Contin...		60311	2210				
Adams	Adam	13	5142335	Physics	GCE Advanced Two Year...	02/09/2021		31/07/2023		Contin...		60147	1210				
Adams	George	13	1111166	Geography	GCE Advanced Two Year...	03/09/2020	22/07/2022	31/07/2022		Compl...		60189	3910				

Editing Learning Aim Details

If the **Unlock Padlock** icon is displayed, the **Start Date**, **End Date**, **Planned End Date (P End Date)**, **Core Aim**, **Status**, **Withdrawal Reason**, **QAN**, **Discount** code, **Provider UKPRN** and **Traineeship** associated with each Learning Aim can be edited manually.

Manually edited data is highlighted in yellow, for example:

- If the Learning Aim end date is changed to before the planned end date and the status has been edited manually to complete, the **End Date** cell and **Status** cell are highlighted in yellow.
- If a QAN or discount code is accidentally edited to an incorrect value. Data is also highlighted in yellow if:

Data is also highlighted in yellow if:

- Learning Aims retrieved from Course Manager or the exams data retrieved from Examinations Organiser is different to that originally displayed in the **Learning Aims** panel, the applicable cell is highlighted with a bright yellow background.
- the planned end date has been overwritten with data from the previous Autumn return, the cell is highlighted in yellow.

NOTE: Yellow highlights indicate a difference between values collected for the census and values recorded in Course Manager. Yellow highlights do not indicate errors.

Surname	Forename	YTI	ULN	Subject	Level	Start Date	End Date	P End Date	Core	Status	Withdrawal Re.	QAN	Disc.	Provider UK	Trainee	Programme	Result
Acton	Jordan	13	5142336	Chemistry	GCE Advanced Two Year...	03/09/2020	22/07/2022	31/07/2022		Compl...		60152	1110				
Acton	Jordan	13	5142336	Mathematics	GCE Advanced Two Year...	03/09/2020	22/07/2022	31/07/2022		Compl...		60311	2210				
Acton	Jordan	13	5142336	Physics	GCE Advanced Two Year...	03/09/2020	22/07/2022	31/07/2022		Compl...		60147	1210				
Adams	Adam	13	5142335	Chemistry	GCE Advanced Two Year...	02/09/2021		31/07/2023		Contin...		60152	1110				
Adams	Adam	13	5142335	English	GCE Advanced Two Year...	02/09/2021		31/07/2023		Contin...		60146	5030				
Adams	Adam	13	5142335	Mathematics	GCE Advanced Two Year...	02/09/2021		31/07/2023		Contin...		60311	2210				
Adams	Adam	13	5142335	Physics	GCE Advanced Two Year...	02/09/2021		31/07/2023		Contin...		60147	1210				
Adams	George	13	1111166	Geography	GCE Advanced Two Year...	03/09/2020	22/07/2022	31/07/2022		Compl...		60189	3910				
Adesbayi	Emman...	13	5142336	Art	GCE Advanced Two Year...	03/09/2020	22/07/2022	22/07/2021		Compl...		60144	3510				

If the editing of Learning Aims data is required:

1. Ensure that the **Unlock Padlock** icon is displayed in the top right-hand side of the **Learning Aim** panel. Click the padlock icon to toggle between locked and unlocked, if necessary.

Editable columns are displayed with a white background.

2. To edit the Learning Aim **Start Date**, **End Date** or **P End Date**, click the required cell then click the down arrow and select the date from the Calendar.

IMPORTANT NOTE: Care must be taken when entering/editing dates. You will be prevented from saving the Learning Aims data if:

- a start date that is after 05/10/2023 (Autumn census date) has been entered unless the programme type is a T Level.
- an end date that is before 01/08/2022 (Learning Aims collection start date) has been entered.

Bulk entry options can be used to edit data in the date columns, e.g. to edit several Planned End Dates:

- a. Click the **P End Date** column header to sort into date order.
- b. Use the **Shift**+click (to highlight sequentially listed dates) or **Ctrl**+click (to highlight individual dates).

Site	End Date	P End Date	Core...	Status	Withd
020	22/07/2022	31/07/2022		Compl...	
020	22/07/2022	31/07/2022		Compl...	
020	22/07/2022	31/07/2022		Compl...	
021		31/07/2...		Contin...	
021					
021					
020	22/07/2022				
020	22/07/2022				
020	22/07/2022				
020	22/07/2022				
020	22/07/2022				
020	22/07/2022				
020	22/07/2022	31/07/2022		Compl...	
020	22/07/2022	31/07/2022		Compl...	

- c. Edit the last date in the highlighted group. All the highlighted dates are changed to the date you have entered.
3. To indicate that a course is the student's **Core Aim**, click the required cell to display a tick. Clicking the cell again removes the tick.
 4. To edit the Learning Aim **Status**, click the required cell then click the down arrow and select **Continuing**, **Completed**, **Withdrawn** or **Transferred**, from the drop-down list.
 5. To edit the reason for withdrawal from a Learning Aim, click the required **Withdrawal Reason** cell then click the down arrow and select the required reason from the drop-down list.
 6. To edit the **QAN** or **Discount** code, click the required cell then edit the number.
 7. To edit the **Provider UKPRN**, click the required cell then click the down arrow and select as required from the drop-down list.

8. To indicate that a student is undertaking a traineeship, click the required **Traineeship** cell to display a tick. Clicking the cell again removes the tick.

*NOTE: Edits made in the **Learning Aims** panel do not overwrite data held in Course Manager or Examinations Organiser.*

If the **Unlock Padlock** icon is displayed, it is also possible to **Add** and/or **Exclude** Learning Aim records from the return.

NOTE: This panel is not suitable for adding, editing or removing learning aims for work placements. Learning aims for work placements should be added, edited or removed via Maintain Course only. This new functionality in Maintain Course is described in the Preparation guide.

Adding a New Learning Aim Record

A new Learning Aim record can be added to the list displayed in the **Learning Aims** panel, provided that the **Unlock Padlock** icon is displayed.

You may want to add a Learning Aim if, for example, your school holds the main registration for dual registered pupil/students. All Learning Aims must be returned by the school that holds the pupil/student's main registration because it will receive funding for that pupil/student and it is responsible for their performance.

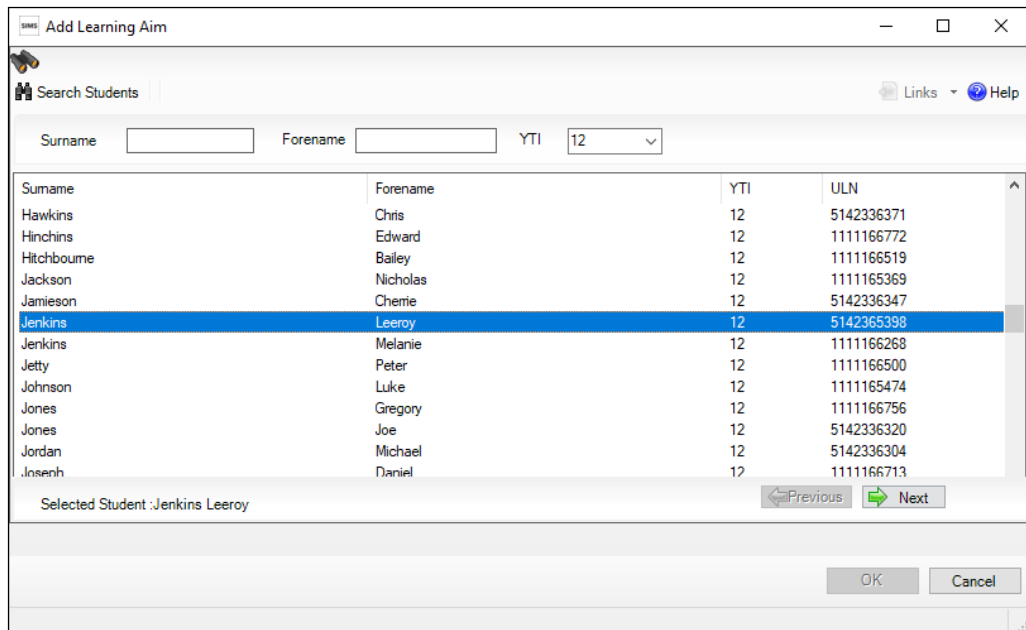
*NOTE: Edits made in the **Learning Aims** panel do not overwrite data held in Course Manager.*

The Add Learning Aim routine enables you to select the required pupil/student then the applicable QAN/Discount Code.

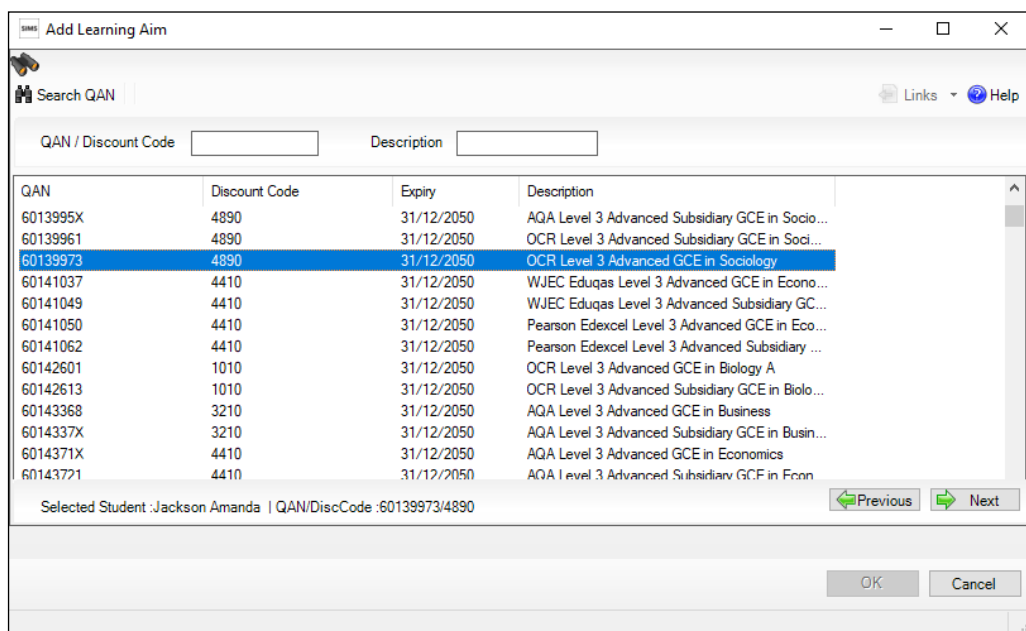
1. Ensure that the **Unlock Padlock** icon is displayed in the top right-hand side of the **Learning Aim** panel.
2. Click the **Add** button to display the first of the **Add Learning Aim** dialogs.

The search criteria, i.e. **Surname**, **Forename** and year taught in (**YTI**), can be used to filter the pupil/student records, if required.

- Click the **Search Students** button to display a list of pupil/students who match the search criteria.



- Highlight the pupil/student whose record you wish to add, then click the **Next** button to display the second of the **Add Learning Aim** dialogs, where the required QAN/Discount Code can be selected.
The search criteria, i.e. **QAN/Discount Code** and **Description**, can be used to filter the Learning Aim records, if required.
- Click the **Search QAN** button to display a list of QAN/Discount Codes that match the search criteria.



03| Producing the School Census Autumn Return

6. Highlight the required QAN/Discount Code, then click the **Next** button to display the third of the **Add Learning Aim** dialogs, where a Programme Type can be selected.
7. Enter the Learning Aim **Start Date** and **Planned End Date**. Alternatively, selected the dates from the associated Calendar.
The dates must be within the collection period (01/08/2022 to 31/07/2024). This date range caters for T Levels, which can start after census day.
8. Click the **Search Programme Type** button to display a list of Programme Types that match the search criteria.

Start Date	Planned End Date	Programme Type
01/08/2022	28/07/2023	Study Programme

9. Highlight the Programme Type record you wish to add.
If a Programme Type is not displayed, select **Tools | Academic Management | Course Manager | Post-16 Programmes of Study** to add a **Programme Type** for this student. For more information, please refer to the *Managing Courses* handbook, available on the support portal (https://customer.support-ess.com/csm?id=kb_article_view&sysparm_article=KB0035739).
The details of the Learning Aim record you have selected are displayed towards the bottom of the dialog.
10. Click the **OK** button to return to the **Learning Aims** panel, where the new record is added to the bottom of the list and is highlighted in yellow. When the data is saved, the new record is sorted into alphabetical order.
11. The **Start Date, End Date, Planned End Date (P End Date), Core Aim, Status, Withdrawal Reason, QAN, Discount** code, **Provider UKPRN** and **Traineeship** can be edited, if required.
12. Click the **Save** button.

NOTE: This panel is not suitable for adding, editing or removing learning aims for work placements. Learning aims for work placements should be added, edited or removed via Maintain Course only.

Excluding Learning Aim Records

Learning Aim records can be excluded from the School Census Autumn Return, provided that the **Unlock Padlock** icon is displayed. The exclusion of a record might be necessary if, for example, your school has a dual registered pupil/student but they have their main registration at another school and therefore your school does not wish to claim Post 16 funding for that pupil/student.

The **Exclude/Restore** toggle button is provided to enable you to exclude Learning Aim(s) from the return and, if necessary, restore them again, e.g. if they were excluded in error. An excluded record cannot be edited but remains visible for reference only.

*NOTE: Edits made in the **Learning Aims** panel do not overwrite data held in Course Manager or Examinations Organiser.*

1. Ensure that the **Unlock Padlock** icon is displayed in the top right-hand side of the **Learning Aim** panel.
2. Click the name of the pupil/student whose Learning Aim record you wish to exclude. An arrow to the left of the student's name indicates that the record has been selected.
3. Click the **Exclude** button. The excluded Learning Aim record is highlighted in dark grey.

Surname	Forename	YTI	U LN	Subject	Level	Start Date	End Date	P End Date	Core.	Status	Withdrawal Re.	QAN	Disc.	Provider UK.	Trainee.	Programme.	Result
Action	Jordan	13	5142336	Chemistry	GCE Advanced Two Year	03/09/2020	22/07/2022	22/07/2023		Compl...		60152	1110				
Action	Jordan	13	5142336	Mathematics	GCE Advanced Two Year	03/09/2020	22/07/2022	22/07/2023		Compl...		60311	2210				
Action	Jordan	13	5142336	Physics	GCE Advanced Two Year	03/09/2020	22/07/2022	22/07/2023		Compl...		60147	1210				
Adams	Adam	13	5142335	Chemistry	GCE Advanced Two Year	02/09/2021		22/07/2023		Contin...		60152	1110				
Adams	Adam	13	5142335	English	GCE Advanced Two Year	02/09/2021		31/07/2023		Contin...		60146	5030				
Adams	Adam	13	5142335	Mathematics	GCE Advanced Two Year	02/09/2021		31/07/2023		Contin...		60311	2210				
Adams	Adam	13	5142335	Physics	GCE Advanced Two Year	02/09/2021		31/07/2023		Contin...		60147	1210				
Adams	George	13	1111166	Geography	GCE Advanced Two Year	03/09/2020	22/07/2022	31/07/2022		Compl...		60189	3910				
Adebayi	Emman...	13	5142336	Art	GCE Advanced Two Year	03/09/2020	22/07/2022	22/07/2021		Compl...		60144	3510				

4. Click the **Save** button.
To re-instate the excluded Learning Aim record, click to select it, click the **Restore** button and then click the **Save** button.

*NOTE: The **Restore** button is displayed when the focus is on an excluded record only.*

IMPORTANT NOTE: This panel is not suitable for adding, editing or removing learning aims for work placements. Learning aims for work placements should be added, edited or removed via Maintain Course only.

04 | Completing the School Census Autumn Return

Creating and Validating the School Census Return.....	63
Producing Detail Reports	66
Printing a Report from your Web Browser	77
Deleting Temporary Web Browser Files	77
Producing the Summary Report	77
Editing an Unauthorised Return	78
Authorising the Return.....	79
Submitting the Return	81
Retrieving Authorised Census Return Files	82
Copying a Return	83
Deleting an Unauthorised Return	83

Creating and Validating the School Census Return

A return must be created, validated and authorised before it can be sent to your Local Authority or uploaded to the DfE COLLECT data collection website (as applicable to your school).

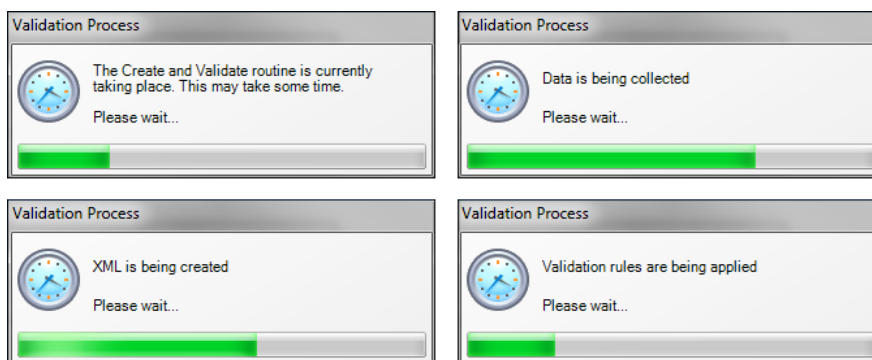
Validating the return creates an unauthorised return file, which is then run against a set of DfE rules. When the validation is complete, a list of errors and queries is displayed.

An error is caused by either missing or inaccurate data, whilst a query highlights data that is unusual or not as expected, e.g. there are no pupil/students showing as having special educational needs.

1. Select **Routines | Statutory Returns | School Census** to display the **Census Return** browser.
2. Click the **Search** button to display a list of returns.
3. Double-click the required return to display the **Census Return Details** page.
4. Click the **Create & Validate** button to start the process. There may be a short delay, depending on the number of pupil/students at your school.

04| Completing the School Census Autumn Return

A progress bar is displayed, indicating that the Create and Validate process is being performed.



During the Create and Validate process, SIMS examines the data for any anomalies applicable to your school phase, e.g. no top-up funding information, missing attendance marks, permanent exclusions without a final governor review result, etc.

If an anomaly is found, a message is displayed, which provides the opportunity to continue to create and validate or cancel the process, so that details can be checked. Detail reports are available to assist you when checking details.

When the validation process is complete, the **Validation Errors Summary** panel is displayed at the bottom of the screen.



Additional Resources:

Dealing with Missing Marks section in the *Edit Marks Routine* chapter of the *Managing Pupil/Student Attendance* handbook or the *Monitoring Session and Lesson Attendance* handbook

Recording Exclusion chapter of the *Managing Pupil/Students* handbook

The *DfE Validations and SIMS Solutions Excel* workbook

(https://customer.support-ess.com/csm?id=kb_article_view&sysparm_article=KB0050590).

Resolving Validation Errors and Checking Queries

After creating the return file and validating the data, any errors and queries found are listed in the **Validation Errors Summary** panel.

Type	Sequence	Message	Location	Solution
F	1500	UPN missing	Name: Abraham, Jane Date of Birth: 2005-05-19, Female UPN:	# Go to Focus Student Student Details and add or issue a UPN.
F	1500	UPN missing	Name: Reid, Rosiel Date of Birth: 2009-03-07, Female UPN:	# Go to Focus Student Student Details and add or issue a UPN.
F	1840	Pupils aged 5 and over Language missing or invalid	Name: Henderson, Jack Date of Birth: 2010-05-07, Male UPN: K022299140	# Go to Focus Student Student Details Ethnic/Cultural panel and enter First language.
F	2350	Insufficient Address information provided.	Name: Bains, Kirki Date of Birth: 2005-01-18, Male UPN: H820200109012	# Go to Focus Student Student Details Addresses and edit pupil's address
Q	1601Q	Please Check: Pupil's age is out of range for school type.	Name: Sungail, Skaste Date of Birth: 2008-03-28, Female, Age: 12 UPN: B8	# Go to Focus Student Student Details and enter pupil's date of birth.
Q	1620Q	Please check: duplicate pupil records with the same Surname, Forename, Gender and Date of birth.	Name: Bennison, Hugo Date of Birth: 2013-02-03, Male UPN:	# Go to Focus Student Student details and check for duplicate pupil record.
Q	1620Q	Please check: duplicate pupil records with the same Surname, Forename, Gender and Date of birth.	Name: Bennison, Hugo Date of Birth: 2010-02-03, Male UPN: V82329991400	# Go to Focus Student Student details and check for duplicate pupil record.
Q	2350Q	Please check: Pupil record with no address details	Name: Belnicko, Chyl Date of Birth: 2013-08-14, Female UPN: C22120901420	# Go to Focus Student Student Details Addresses and edit pupil's address.

The **Validation Errors Summary** panel header displays the number of errors and queries found when the Create and Validate routine was run. A pupil/student and error search facility is also available.

The following information is provided to help with the resolution of validation failures:

- **Type** - the type of validation rule.
 - Failure (**F** displayed in red) indicates an error that must be resolved.
 - Query (**Q** displayed in black) indicates that there are unusual data conditions. These should be considered and corrected, if necessary.
- **Sequence** - the validation error or query number.
- **Message** - the validation error or query message text.
- **Location** - the specific record in SIMS that contains the error or query.
- **Solution** - the SIMS menu route and/or instructions about where/how the error can be corrected or the query checked.

TIP: Using the Solution hyperlinks

When the pointer is hovered over an error or query row, it changes to a hand if a hyperlink is available to the area of SIMS where the problem can be checked.

*A hyperlink is also indicated by a hash symbol (#) preceding the **Solution** text.*

Click the required hyperlink to display the specific area in SIMS where the record(s) can be checked/corrected.

To assist in the viewing of errors and queries:

- When the mouse pointer is hovered over a **Message**, **Location** or **Solution**, hover help displays the entire content of that cell.
- The Student Search functionality can be used to display all errors and queries relating to a particular pupil/student.
 - a. Enter all or part of a UPN, pupil/student's surname or date of birth in the **Student Search** field.
 - b. Select the required record from the **Student Search** drop-down list to populate the **Student Search** field.
 - c. Click the **Find** button to display the applicable validation records.
- Use the **Errors Search** to display the required error or query you want to view. Select **ALL, ERRORS, QUERIES** or the required number from the drop-down list. The total number of rows that relate to the selected validation is displayed adjacent to the **Error Search** field.
- By default, when **ALL** is selected from the **Errors Search** drop-down list, the errors are displayed at the top of the list.
The order of the items in the list can be changed by clicking the appropriate column heading.
The width of the columns can be changed by dragging the dividing line between the column headings until the required size is achieved.
- View a summary of validation failures by clicking the **Report** button (located above the **Validation Errors Summary** panel, on the left-hand side). The report is displayed in your web browser, from where it can be printed or transferred to another application, if required.

The report is saved automatically in the **Census Folder** (specified previously via the census browser). The original report, which was generated when the **Create & Validate** button was clicked is also stored in this folder.

- Your generated report file name: Validation Errors Summary.HTML
- Original report file name:
<LACode><SchoolNumber>_<SurveyType>_<LACode><LL><Year>_<SerialNumber>_ValidationErrorsSummary.HTML

For guidance on navigating to files on your local workstation when you are working in a Hosted environment, please contact your System Manager or Local Support Unit.

Resolve as many errors and check as many queries as possible then revalidate the return details. Continue to resolve failures and revalidate the return as many times as necessary.

NOTE: All errors must be resolved, and all queries must be investigated.

If at any point you want to hide the list of error and queries, click the **Close** button located at the top right-hand side of the **Validation Errors Summary** panel. The list is displayed again when the Create and Validate process is run.

Many of the errors generated can be fixed quickly using bulk update functionality (via **Routines | Pupil (or Student) | Bulk Update**). For more information, please refer to the *Managing Pupil/Students* handbook.

Producing Detail Reports

Detail reports can be used to check the data stored in SIMS that has been used to create the return. The reports can be produced as soon as the return has been created and validated.

Each detail report header displays the **Security Message** that was defined in the **Census Return** browser, the **Report Criteria** and the **Total Pupil (or Student)s** who are listed in the report. Also included in the report header is the **School Name**, the **Fileset Number**, the **Filename**, the **Report Created** date, and the **XML Version**.

Where a pupil/student's National Curriculum Year group is different from what their date of birth would suggest, the applicable **YTI** cell is highlighted in yellow.

The reports available for selection may vary depending on your school phase.

On Roll Basic Details Report

Report Criteria: Pupil/students on-roll on census day.

This report provides the following information about pupil/students who are on-roll on census day: UPN, ULN, legal surname, legal forename, preferred surname, former surname, date of birth, gender, year taught in (YTI), date of admission (DOA), enrolment status, language, Youth Support Services Agreement (YSSA), part-time status, boarder status and class type.

Leavers Basic Details Report

Report Criteria: Pupil/students not on-roll on census day:

- Leavers with attendance (10/04/2023 to 31/07/2023)
- Leavers with exclusions (01/01/2023 to 31/07/2023)
- Leavers with Learning Aims (01/08/2022 to 05/10/2023)
- Leavers with funding and monitoring (01/08/2023 to 05/10/2023)
- Leavers with alternative provision (19/05/2023 to 05/10/2023).

This report provides the following information about pupil/students not on-roll on census day (Leavers): UPN, ULN, former UPN, legal surname, legal forename, middle names, former surname, date of birth (DOB), gender, date of admission (DOA), date of leaving (DOL), language, part-time status, boarder status, attendance, exclusions, Learning Aims, funding and monitoring and alternative provision.

Exclusions Report

Report Criteria: Pupil/students with exclusions from 01/01/2023 to 31/07/2023:

- On-roll pupil/students and leavers
- Suspensions (excluding lunchtime suspensions)
- Permanent Exclusions with final review.

NOTE: Permanent exclusions are collected only if a final review exists.

The following details about pupil/students who match the report criteria are displayed: UPN, legal surname, legal forename, date of birth (DOB), gender, date of admission (DOA), date of leaving (DOL), exclusion category, reason(s) for exclusion, exclusions start date, number of sessions from which the pupil/student was excluded, SEN provision and on-roll status.

NOTE: Suspension is the new name for a Fixed Term Exclusion.

Attendance Reports for Schools that use SIMS Attendance

If SIMS Attendance is in use, the following two reports are available:

- **Attendance First Half of Summer Term Report**

Applicable to users of SIMS Attendance only

Report Criteria: Pupil/students with attendance one term ago (10/04/2023 to 28/05/2023). On-roll pupil/students and leavers (but not boarders) who were aged four to 15 at 31/08/2022.

This report displays the following information about pupil/students and their attendance during the first half of the Summer term: UPN, legal surname, legal forename, date-of-birth (DOB), gender, date of admission (DOA), year taught in (YTI), number of termly sessions possible, on-roll status, number of sessions present at school, number of approved educational activity (AEA) sessions, number of authorised and unauthorised absence sessions and number of attendance not required sessions.

Totals are displayed at the bottom of the applicable columns.

- **Attendance Second Half of Summer Term Report**

Applicable to users of SIMS Attendance only

Report Criteria: Pupil/students with attendance one term ago (29/05/2023 to 31/07/2023). On-roll pupil/students and leavers (but not boarders) who were aged four to 15 at 31/08/2022.

This report displays the following information about pupil/students and their attendance during the second half of the Summer term: UPN, legal surname, legal forename, date-of-birth (DOB), gender, date of admission (DOA), year taught in (YTI), number of termly sessions possible, on-roll status, number of sessions present at school, number of approved educational activity (AEA) sessions, number of authorised and unauthorised absence sessions and number of attendance not required sessions.

Totals are displayed at the bottom of the applicable columns.

Attendance Reports for Schools that do not use SIMS Attendance

If SIMS Attendance is not in use, the following two reports are available:

- **Attendance First Half of Summer Term Report**

Applicable to Non-SIMS Attendance users only

Report Criteria: Pupil/students with attendance one term ago (29/05/2023 to 31/07/2023). On-roll pupil/students and leavers (but not boarders) who were aged four to 15 at 31/08/2022.

This report displays the following information about pupil/students and their attendance during the first half of the Summer term: UPN, legal surname, legal forename, date-of-birth (DOB), gender, date of admission (DOA), year taught in (YTI), number of termly sessions possible, number of authorised absence sessions, number of unauthorised absence sessions, number of approved educational activity (AEA) sessions, number of exceptional circumstance sessions, and on-roll status.

Totals are displayed at the bottom of the applicable columns.

- **Attendance Second Half of Summer Term Report**

Applicable to Non-SIMS Attendance users only

Report Criteria: Pupil/students with attendance one term ago (29/05/2023 to 31/07/2023). On-roll pupil/students and leavers (but not boarders) who were aged four to 15 at 31/08/2022.

This report displays the following information about pupil/students and their attendance during the second half of the Summer term: UPN, legal surname, legal forename, date-of-birth (DOB), gender, date of admission (DOA), year taught in (YTI), number of termly sessions possible, number of authorised absence sessions, number of unauthorised absence sessions, number of approved educational activity (AEA) sessions, number of exceptional circumstance sessions, and on-roll status.

Totals are displayed at the bottom of the applicable columns.

Absentees Report

Report Criteria: On-roll pupil/students and leavers (but not boarders) who have an absence rate of 10% or above, with attendance one term ago (10/04/2023 to 30/05/2023), who were aged four to 15 at 31/08/2022.

An individual pupil/student's overall absence rate is calculated as follows:

$$\text{Overall absence rate} = \frac{\text{Total overall absence sessions}}{\text{Total sessions possible}} \times 100$$

The report provides the following information about the pupil/students who match the report criteria: UPN, legal surname, legal forename, date of birth (DOB), gender, year taught in (YTI), number of sessions possible, session absence (i.e. the number of authorised plus unauthorised absences), on-roll status and enrolment status.

This report can assist with the tracking of absence (particularly persistent absence) and highlights those absences that might need to be tracked.

SEN Report

Report Criteria: On-roll pupil/student with SEN Provision/Status **E** (Education, Health and Care Plan) or **K** (SEN Support).

This report provides a list of pupil/students who have special educational needs. Displayed are their UPN, legal surname, legal forename, date of birth (DOB), gender, year taught in (YTI), SEN provision member of SEN unit and member of resourced provision indicator and on-roll status.

Address Details Report

Report Criteria: Pupil/students on-roll on census day.

This report provides a list of pupil/students, their UPN, former UPN, legal surname, legal forename, middle name(s), post code, unique property reference number (UPRN), address details and the administrative area/county.

Definition: Unique Property Reference Number (UPRN) is a unique identifier (reference number) that links together related address records across different software programmes. This enables organisations to collate and share information based on a common reference number.

School Dinner Taken Report

Applicable to schools with pupils in Reception, Year 1 and Year 2

Report Criteria: Pupil/students on-roll on census day, who have taken school dinner on the reference date.

- Pupil/students in Year Taught In R, 1 and 2.
- Pupil/students in Year Taught In X who are aged four to six and who were born between 01/09/2016 and 31/08/2019 inclusive (**Special schools only**).

The report header also displays the total number of pupil/students, the total number of school dinners taken, and the total number of school dinners not taken.

This report provides the following information about pupil/students who match the report criteria: UPN, legal surname, legal forename, date of birth (DOB), gender, year taught in (YTI) and school dinner taken (yes/no).

Free School Meal Eligibility Report

Report Criteria: On-roll pupil/students on census day who were eligible for free school meals on or after 19/05/2023 and up to census day.

This report provides information on free school meal eligibility for pupil/students who match the report criteria: UPN, legal surname, legal forename, date of birth (DOB), gender, year taught in (YTI), free school meal eligibility start date, end date and the UK country in which the eligibility applies, and on-roll status.

NOTES: This report includes any free school meals recorded outside of England, e.g. Wales.

Only Free School Meals records where the country recorded is England or <blank> attract the Pupil Premium.

On Roll Learning Aims Report

Report Criteria: On-roll pupil/students in Year 12 or above with Learning Aims during 01/08/2022 to 05/10/2023 (census day) who have an enrolment status of **C** (Current - Single Registration) or **M** (Current Main - Dual Registration).

This report provides the following information:

- basic details about the pupil/students who match the report criteria: UPN, legal surname, legal forename, year taught in (YTI), date of birth (DOB), date of admission (DOA) and enrolment status.
- Learning Aims information is displayed on the right-hand side of the report: QAN numbers, discount code, course description, course start date, planned end date, actual end date, completion status, withdrawal reason, UK provider reference number (UKPRN), traineeship, an indication whether the Learning Aim is the core aim (Yes/No) and programme type.

Definitions:

- Learning Aim Planned End Date - the date by which the school and learner plan to complete the activities related to this Learning Aim.
- Learning Aim Actual End Date - the date that the learner completed the learning activities necessary to achieve the Learning Aim or the date the learner withdrew from the learning activities.
- UK provider reference number (UKPRN) - a unique identifier allocated to institutions by the UK Register of Learning Providers.
- Traineeship - a course with work experience that gets the pupil/student ready for an apprenticeship or work. A traineeship includes a work experience placement and help with English and Maths, if required.



More Information:

On Roll Basic Details Report on page 66

Leavers Learning Aims Report

Report Criteria: Leavers in Year 12 or above with Learning Aims during 01/08/2022 to 05/10/2023 who had an enrolment status of **C** (Current - Single Registration) or **M** (Current Main - Dual Registration).

This report provides the following information:

- Basic details about the pupil/students who match the report criteria: UPN, legal surname, legal forename, year taught in (YTI), post code, unique property reference number (UPRN), date of birth (DOB), date of admission (DOA), date of leaving (DOL).
- Learning Aims information is displayed on the right-hand side of the report: QAN numbers, discount code, course descriptions, course start date, planned end date, actual end date, completion status, withdrawal reason, UK provider reference number (UKPRN), traineeship, an indication whether the Learning Aim is the core aim (Yes/No) and programme type.

Definitions:

- Learning Aim Planned End Date - the date by which the school and learner plan to complete the activities related to this Learning Aim.
- Learning Aim Actual End Date - the date that the learner completed the learning activities necessary to achieve the Learning Aim or the date the learner withdrew from the learning activities.
- UK provider reference number (UKPRN) - a unique identifier allocated to institutions by the UK Register of Learning Providers.
- Traineeship - a course with work experience that gets the pupil/student ready for an apprenticeship or work. A traineeship includes a work experience placement and help with English and Maths, if required.

Learning Aims by Status Report

Report Criteria: Learning Aims from 01/08/2022 to 05/10/2023 (including both on-roll and leavers).

NOTE: Large discrepancies between last year's and this year's data might indicate mistakes.

The report provides the following information:

- Each Learning Aim code and title.
- The total number of each Learning Aim in use for academic year 2022/2023 and 2023/2024.
- The number of each Learning Aim completed, continuing, withdrawn and transferred in the academic year 2022/2023 and 2023/2024.

NOTE: A Learning Aim may appear more than once in this table: for example, a continuing Learning Aim which began last year will be counted as continuing in both years.

Post-16 Programmes of Study Report

Report Criteria: On-roll and leavers in YTI 12+ with learning aims in the School Census Autumn 2023 (01/08/2022 to 05/10/2023) who had an enrolment status of **C** (Current - Single Registration) or **M** (Current Main - Dual Registration).

The report provides information about Planned Qualification Hours and Planned Non-Qualification Hours for the current year (2023/2024) and previous year (2022/2023).

Also displayed are the pupil/student's UPN, legal surname, legal forename, year taught in (YTI), full-time employed status and on-roll status.

Definition:

Full-time employed pupil/students are those working eight or more weeks consecutively and for 20 or more hours per week. Part-time work (e.g. a weekend or evening work) is not included in the full-time employed hours. T Level Planned Qualification Hours and T Level Planned Non-Qualification Hours are displayed for T level programmes.

*NOTE: To ensure that the total Planned Qualification Hours and Planned Non-Qualification Hours are submitted in the Autumn School Census, information relating to Programmes of Study for Post 16 students should be recorded via **Tools | Academic Management | Course Manager | Post-16 Programmes of Study**.*

Post-16 Programmes of Study and Learning Aims Report

Report Criteria: On-roll pupil/students and Leavers in Year 12 or above with Programmes of Study and Learning Aims. Enrolment status of **C** (Current - Single Registration) or **M** (Current Main - Dual Registration).

The report header displays the total pupil/students, the total pupil/students with programmes of study and the total learning activities.

Each programme for each pupil/student is displayed in the report with a light-yellow background. The associated learning aims are displayed with a light blue background below the programme.

The report provides the following information:

- Basic details about the pupil/students who match the report criteria: UPN, legal surname, legal forename, date of birth (DOB), gender and year taught in (YTI).
- Post-16 programme of Study and Learning Aims: QAN/Discount, description, programme type, core aim and provider UKPRN.
- Additional information: start date, end date, planned end date, completion status, withdrawal reason, traineeship and on-roll status.

Work Placements Report

Report Criteria: On-roll students and leavers in year taught in 12+ with Work Placement learning aims included in the census for the following QNs: ZWRKX001, ZWRKX002 and ZWRKX003.

This report provides the following information: legal surname, legal forename, year taught in (YTI), unique learner number (ULN), qualification number (QN), start date, end date, employer ID, mode, planned hours and on-roll status.

Prior Attainment Report

Report Criteria: On-roll and leavers in year taught in 12+ with learning aims in the School Census Autumn 2023 (01/08/2022 to 05/10/2023).

This report provides the following information:

- UPN, legal surname, legal forename, year taught in (YTI), enrolment status.
- Maths information (i.e. highest grade, prior attainment, and funding exemption).
- English information (i.e. highest grade for English Language or English Literature, prior attainment, and funding exemption).
- Maths previous year highest grade.
- English Language previous year highest grade.
- On-roll status.

IMPORTANT NOTE: Due to the range of qualifications that might be included in Prior Attainment and the variety of sources from which they might come (external results, internal results, non-edi results, marksheet entry, etc.), the report outputs must be carefully checked and amended where necessary via **Tools | Statutory Return Tools | Update Prior Attainment**.

Top-up Funding Report

Report Criteria: On-roll pupil/students who have been awarded Top-up Funding as at census day.

The report provides the following information: UPN, legal surname, legal forename, date of birth (DOB), gender, year taught in (YTI) and SEN provision.

Funding and Monitoring Report

Not applicable to Nursery schools

Report Criteria: On-roll pupil/students and leavers with funding and monitoring information for the collection period 01/08/2023 to 05/10/2023.

The report provides the following pupil/student details, and funding and monitoring information: UPN, legal surname, legal forename, date of birth (DOB), gender, Year Taught In (YTI), enrolment status, date of leaving (DOL), funding and monitoring (FAM) type, e.g. NLM (National Learning and Monitoring), funding and monitoring (FAM) code, description, cumulative hours (i.e. all hours of tutoring from 01/08/2023 to 05/10/2023) and on-roll status.

Funding and Monitoring key to codes:

01 = Pupil/student in receipt of National Tutoring Programme (NTP)

21 = Pupil/student in receipt of 16 to 19 tuition fund

22 = Pupil/student is repeating up to one full year of 16 to 19 funded provision.

The code(s) displayed in the report vary depending on your school phase.

Early Years Report

Report Criteria: Pupil/Students on-roll on census day who have early years data.

- All 2 year olds born between 01/09/2020 and 31/08/2021 (Hours at setting and Funded Hours only)
- All 3 year olds born between 01/09/2019 and 31/08/2020
- All 4 year olds born between 01/09/2018 and 31/08/2019 with Year Taught In E1, E2, N1 or N2.

The report provides the following information for each early years pupil: UPN, legal surname, legal forename, date of birth (DOB), gender, year taught in (YTI), hours at setting, funded hours, 30 hour code, extended funded hours and disability access fund.

Post Looked After Arrangements Report

Report Criteria: On-roll pupil/students who have post looked after arrangements as at census day.

The report provides the following information about pupil/students who have post looked after arrangements: UPN, legal surname, legal forename, date of birth (DOB), gender, year taught in (YTI) and post looked after arrangements, e.g. ceased to be looked after through adoption.

Alternative Provision Report

Report Criteria: School Arranged Alternative Provision Placements that fall within the Alternative Provision Placement data collection period:

- On-roll (18/05/2023 to 05/10/2023)
- Leavers (18/05/2023 to 05/10/2023).

The report provides the following information: UPN, legal surname, legal forename, date of birth (DOB), gender, Year Taught In (YTI), Alternative Provision URN, Alternative Provision UKPRN, alternative provision setting, alternative provision reason, start date, SEN on start date, end date, SEN on end date, alternative provision attendance, alternative provision sessions and on-roll status.

Permanent Exclusions without Final Review Report

Not applicable to Nursery schools

Report Criteria: On-roll pupil/students and leavers with permanent exclusions and without a final review from 01/01/2023 to 31/07/2023.

NOTE: The date range for this report does not match the collection dates for the school census. This is intentional to enable all instances of permanent exclusions without final review to be checked.

This report details permanent exclusions that do not have a final review and will not be included in the census, either because the exclusion process is still ongoing or because the school has not recorded the final review result. The report has been provided to assist schools in checking whether details have been recorded accurately.

The following information is included in the report: UPN, legal surname, legal forename, date of birth (DOB), gender, date of admission (DOA), date of leaving (DOL), reason for exclusion, exclusion start date, SEN expert requested (Yes/No) and on-roll status.

Generating Detail Reports

To select a single detail report, select the required report from the **Detail Report** drop-down list located at the top of the **Census Return Details** page.

NOTE: The contents of the graphics are examples only of what you might expect to see when using SIMS to produce the School Census Return.

Census Return Details - Autumn 2022 Term : School Census Autumn 2022

Save Undo Create & Validate Summary Authorise **Detail Report**

1 Census Details 2 School Information 3 Top-up Funding 4 Post Looked After

1 Census Details

Census Date: 06/10/2022

Description: School Census Autumn 2022

Attendance collected from: 18/04/2022

Exclusions collected from: 01/01/2022

AP Placements collected from: 19/05/2022

FAM collected from: 01/08/2022

Learning Aims collected from: 01/08/2021

*FSM collected from: 20/05/2022

*Only collected for on roll pupils not leavers

2 School Information

School Name: Green Abbey School

LA: 823 Establishment N: []

Telephone: 851234 URN: []

School E-mail Address: office@ga.org.uk

School Phase: SS Secondary

School Type: Comprehensive all-through 11-18

Governance: Community Intake Type: []

Lowest NC Year: 7 Highest NC Year: []

On Roll Basic Details Report

Leavers Basic Details Report

Exclusions Report

Attendance Report(1st half term)

Attendance Report(2nd half term)

Absentees Report

SEN Report

Address Details Report

School Dinner Taken Report

Free School Meal Eligibility Report

On Roll Learning Aims Report

Leavers Learning Aims Report

Learning Aims by Status Report

Post-16 Programmes of Study Report

Post-16 Programmes of Study and Learning Aims Report

Work Placements Report

Prior Attainment Report

Top-up Funding Report

Funding and Monitoring Report

Post Looked After Arrangements Report

Alternative Provision Report

Permanent Exclusions without Final Review Report

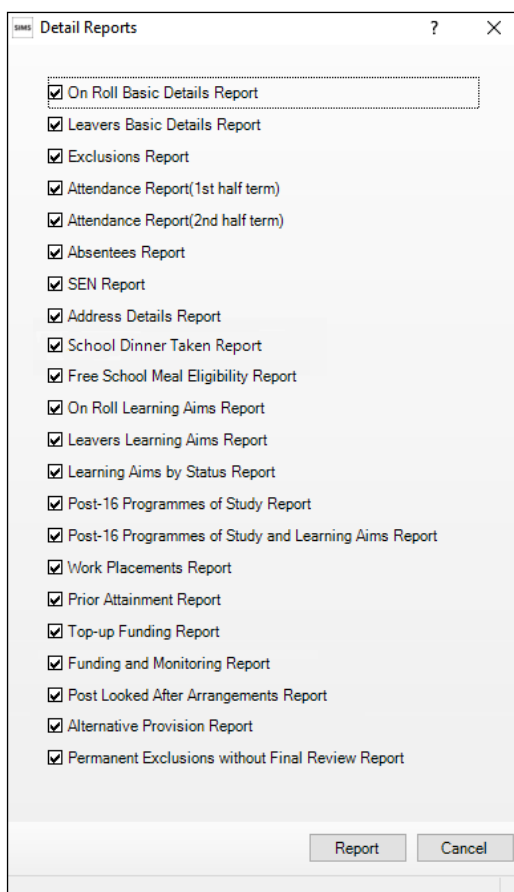
Multiple Reports...

Calculate All Details

The selected report is generated automatically and displayed in your web browser.

04| Completing the School Census Autumn Return

To run several detail reports, select **Multiple Reports...** from the bottom of the **Detail Report** drop-down list to display the **Detail Reports** dialog.



By default, all detail reports are selected. If any reports are not required, deselect the associated check box. Click the **Report** button to generate the selected reports, which are displayed in your web browser.

The report(s) are saved automatically in the **School Census Folder**, which was specified in the **Census Return** browser, e.g. S:\SCHOOL CENSUS. For guidance on navigating to files on your local workstation when you are working in a Hosted environment, please contact your System Manager or Local Support Unit.

The report is saved with a filename that consists of the following data fields separated by underscores ('_'):

```
<LACode><SchoolNumber>_<SurveyType>_<LACode><LL><Year>_<SerialNumber>_<name of the report>_Report.html
```

For example:

```
8234321_SC3_823LL23_001_onroll_pupil_basic_details_report.html.
```

Printing a Report from your Web Browser

IMPORTANT NOTE: Any printed reports containing information that could identify a person (e.g. their name, address, UPN, etc.) should be used for validation purposes only and should not be retained. The Security Message (displayed at the top of each report) can be customised to include, for example, instructions for the destruction of the printed reports.

1. With the generated report displayed in your web browser, select the **Print** option (**Ctrl+P**) to display the **Print** dialog.
2. Ensure that the print settings are correct then click the **Print** button.
3. Click the **Close** button on the top right-hand corner of the web page to close the report and return to the census page.

Deleting Temporary Web Browser Files

It is recommended that, after viewing statutory returns reports, you delete any temporary web browser files to ensure that any cached data (i.e. data stored on your machine, which enables high-speed access to previously viewed data) is removed.

This prevents the information, e.g. copies of web pages that are stored in the local cache for faster viewing, remaining on the hard disk of the device in the temporary directory, where it is not secure.

When this process is performed, all temporary files (including any Statutory Returns reports files) that the browser has cached are deleted.

To clear the cache, open your web browser, then clear the browsing data history. For more information, please refer to the documentation applicable to the web browser you are using.

Producing the Summary Report

The Summary report enables the school staff, who are involved in the return's preparation, to assess the accuracy and completeness of the return data. It should then be passed to the Head Teacher for their review.

NOTE: When the return is authorised, the Summary report is automatically generated and displayed in your web browser.

Generating the Summary Report

Click the **Summary** button located at the top of the **Census Return Details** page. The report is automatically displayed in your web browser but can be transferred to a spreadsheet such as Microsoft® Excel if required.

The report is saved automatically in the **Census Folder**, which was specified in the **Census Return** browser, e.g. S:\SCHOOL CENSUS. For guidance on navigating to files on your local workstation when you are working in a Hosted environment, please contact your System Manager or Local Support Unit.

The report is saved with a filename that consists of the following data fields separated by underscores ('_'):

```
<LACode><SchoolNumber>_<SurveyType>_<LACode><LL><Year>_  
<SerialNumber>_<name of the report>_Report.html
```

For example: 8234321_SC3_823LL23_001_Summary_Report.html.

It is important that the Head Teacher checks all the information on the Summary report before the return is authorised. Your LA/DfE might request that a copy of the Summary report (which is automatically generated when the return is authorised) is signed by the Head Teacher and sent to the LA/DfE when the return has been authorised.

Editing an Unauthorised Return

The return details, e.g. **Description**, **School Information**, etc. can be edited via the **Census Return Details** page at any time prior to authorisation.

IMPORTANT NOTE: *An authorised return cannot be edited. If changes are required to an authorised return, use the **Copy** facility to produce a duplicate return (with a unique description) in which the changes can be made.*

1. Select **Routines | Statutory Returns | School Census** to display the browser.
2. Ensure that the **Census Folder** and the **Security message for Reports** are correct, then click the **Search** button to display any previously created returns. Unauthorised return files can be recognised by their .UNA suffix.
3. Double-click the required return. Alternatively, highlight the required return, then click the **Open** button to display the **Census Return Details** page.
4. Edit the return details as required.
5. Click the **Create & Validate** button to display the **Validation Errors Summary** panel.
6. Run the detail reports and Summary report and then use the information they provide to assist with resolving errors and queries.
7. Repeat the editing and Create & Validate process again, if necessary.
8. Click the **Save** button.



More Information:

Configuring the Census Folder on page 17

Specifying the Security Message for Reports on page 18

Resolving Validation Errors and Checking Queries on page 64

Producing Detail Reports on page 66

Producing the Summary Report on page 77

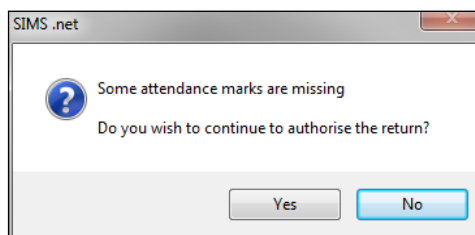
Authorising the Return

A return must be authorised before it can be submitted to your Local Authority or uploaded to the DfE COLLECT data collection website (as applicable to your school). If you authorise a return and subsequently need to make amendments, you must either make a copy of the return and work on the copy or create a new return.

Before authorising the return, you should ensure that all the information displayed on the **Census Return Details** page is correct and does not require further editing. This is because it is not possible to edit details after the return is authorised. The content of the Summary report can be useful when reviewing the information.

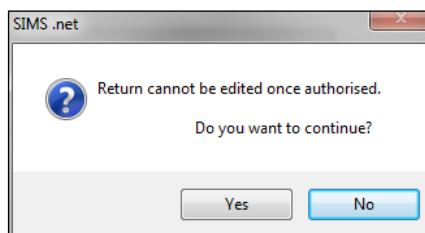
1. Click the **Authorise** button.

If missing marks exist, the following message is displayed.



2. Click the **Yes** button to continue with the authorisation process or the **No** button if you want to return to SIMS where the missing marks can be entered.

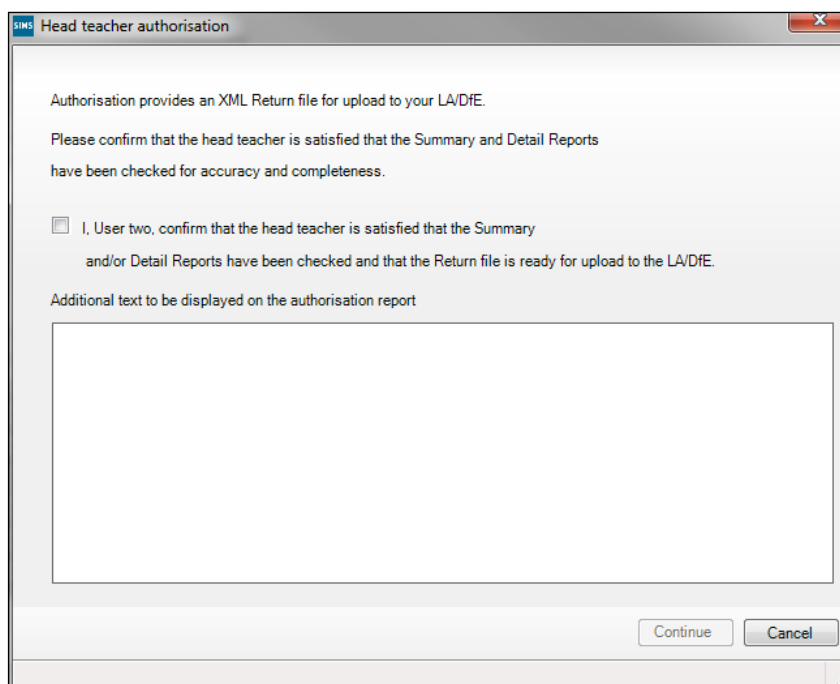
If you choose to continue, a message reminds you that the return cannot be edited once it is authorised.



3. Click the **Yes** button to continue or the **No** button to return to SIMS where edits can be made to the data before authorising.

04| Completing the School Census Autumn Return

If you choose to continue, the **Head teacher authorisation** dialog is displayed.



4. Enter any additional text to be displayed on the authorisation report, if required. This may be requested by your LA, e.g. to explain the reason for any validation failures.
5. Select the confirmation check box to confirm that the Head Teacher is satisfied that the Summary and/or detail reports have been checked and that the return file is ready for upload to your LA/DfE.
When the confirmation check box is selected, the **Continue** button is activated enabling you to complete the authorisation process.
6. Click the **Continue** button to authorise the return and prompt the following actions:
 - The return file extension changes automatically from UNA (unauthorised) to XML (authorised).
 - The Summary report, Authorisation report and Validation Errors Summary report are generated automatically and displayed in your web browser, from where they can be printed, if required.
 - The Learning Aims Comparison with Course Manager report and Learning Aims Comparison with the Previous Autumn report are generated automatically and displayed in your web browser, from where they can be printed, if required.

All reports (including detail reports) and the XML file are saved in the **Census Folder**, which was specified previously in the **Census Return for Autumn 2023 Term** browser.

These reports can be viewed using the Retrieve Authorised Census Return Files routine (via **Tools | Statutory Return Tools**). This routine also provides the opportunity to download the files to a different folder.

IMPORTANT NOTE: *The retrieved files contain sensitive information. Ensure that authorised personnel only have access to the download folder.*

For guidance on navigating to files on your local workstation when you are working in a Hosted environment, please contact your System Manager or Local Support Unit.

After the return is authorised, reports based on cohorts can be created (via **Reports | Design Reports**), so that items collected in the return can be tracked. Provided that **Student** has been selected as the data area, the Statutory Returns sub-report is available for selection when specifying the fields to be included in the report (the last node).



Additional Resources:

Designing and Running Reports handbook



More Information:

Producing the Summary Report on page 77

Retrieving Authorised Census Return Files on page 82

Copying a Return on page 83

Submitting the Return

When the return has been completed and the Summary report has been signed by the Head Teacher (if requested to do so by your LA), the .XML file can be uploaded to the DfE COLLECT data collection website or sent to your LA, depending on the instructions you have been given.

Guidance about how Local Authorities, schools and academies should submit the census data is available on the GOV.UK website (<https://www.gov.uk/guidance/school-census>) website.

The authorised return file can be located in the folder previously specified in the **Census Return** browser. For guidance on navigating to files on your local workstation when you are working in a Hosted environment, please contact your System Manager or Local Support Unit.

IMPORTANT NOTE: *An authorised file cannot be edited. If you need to make changes to an authorised file, you must make a copy of the original file, rename it and work on the copy.*



More Information:

Configuring the Census Folder on page 17

Copying a Return on page 83

Retrieving Authorised Census Return Files

Authorised returns are stored in your Document Management Server (DMS). The Returns Manager can download and run the reports associated with previous authorised returns enabling the data for the current return to be compared with that submitted previously.

1. Select **Tools | Statutory Returns Tools | Retrieve Authorised Census Return Files** to display the **Retrieve Authorised Census Return Files for <census name>** page.
2. Select the type of census required from the **Return Type** drop-down list to display a list of previous returns that match the selected criteria.
3. By default, the **Download to** field displays the folder specified previously in the **Census Return** browser. To specify a different folder:
 - a. Click the **Select a folder** button (...) to display the **Browse For Folder** dialog. Navigate to the location of the required folder then highlight it. If a suitable folder does not exist, click the **Make New Folder** button then enter a suitable folder name.

IMPORTANT NOTE: *Ensure that authorised personnel only have access to the download folder because the retrieved files contain sensitive information.*

For guidance on navigating to files on your local workstation when you are working in a Hosted environment, please contact your System Manager or Local Support Unit.

- b. Click the **OK** button to select or create the folder and then return to the **Retrieve Authorised Return Files for <census name>** page, where the chosen folder name is displayed in the **Download to** field.
4. Highlight the return you wish to retrieve then click the **Retrieve Files** button.

The authorised return file (i.e. the XML file) and all reports associated with the selected return are downloaded from your DMS to the specified folder. The folder and its contents are then displayed automatically, enabling you to open the required files in your web browser.

5. The contents of the specified folder can be viewed again by clicking the **Folder** button adjacent to the **Download to** field.

If you want to create reports based on cohorts, so that items collected in the return can be tracked, a sub-report is available (via **Reports | Design Reports**).

The **Statutory Returns** sub-report is available for selection only if **Student** has been selected as the Data Area.

When you **Select fields to be included in the report**, the **Statutory Returns** sub-report is located at the bottom of the list (the last node). Three options are available for selection under this sub-report: **Authorised Date**, **File Name** and **Return Description**.



Additional Resources:

Designing and Running Reports handbook

Copying a Return

An unauthorised return can be copied and saved as a new return. This enables a 'snapshot' of a return to be taken at any time providing a backup of any manual changes that have been made to the return, for example before recalculating details.

This functionality can also be used to make a copy of an authorised return if the LA or DfE requires it to be resubmitted. The necessary corrections can then be made to the data. The copied return must be saved, created, validated and authorised before resubmitting.

NOTE: Ensure that the return you wish to replicate is not open at the time of copying.

1. Select **Routines | Statutory Returns | School Census** to display the census browser.
2. Click the **Search** button to ensure that the list of returns is displayed.
3. Highlight the file you want to copy then click the **Copy** button.

A message prompts for confirmation that you wish to make a copy of the selected return.

IMPORTANT NOTE: Any values for Early Years, Top-up Funding, Post Looked After Arrangements, Funding and Monitoring, and Attendance (where applicable), will not be copied but will be populated from the current values held in the database.
The Create & Validate routine must be run to generate a new census file.

4. Click the **Yes** button to make the copy, which is then displayed in the browser as:
Copy of <description of selected file>.
5. To rename the copied return, highlight it, then click the **Open** button to display the **Census Return Details** page.
6. In the **Census Details** panel, edit the **Description** then click the **Save** button.

IMPORTANT NOTE: A unique description must be used for each return. If duplicate returns are detected, an error message is displayed.

Deleting an Unauthorised Return

During the return process, several copies of the return might be created, e.g. to track progress. When the return has been authorised successfully, it is advisable to delete any versions of the return that are no longer required. This keeps the number of files in the storage folder and listed in the browser to a minimum, therefore removing confusion and lessening the risk of selecting the incorrect return.

The Delete routine can be used to remove unwanted returns at any time prior to the relevant return being authorised.

IMPORTANT NOTES: *When a return file is deleted, any associated files, e.g. Validation Errors Summary, detail reports, etc. that have been produced are also deleted.*

Any return files that have already been authorised cannot be deleted.

1. Select **Routines | Statutory Returns | School Census** to display the browser.
2. Click the **Search** button to ensure that the list of return files is displayed.
3. Highlight the return file to be deleted, then click the **Delete** button. A message prompts for confirmation that the selected return should be deleted.
4. Click the **Yes** button to permanently delete the selected return file and all associated report files.

The selected return file and associated reports are removed from the browser and the storage folder.

Index

3

30 hour code21, 72

A

absentees report 67

academies..... 21

access rights7

address details report 67

alternative provision placements .. 2, 16, 72

attendance information

attendance report..... 66

compliant codes 41

non-compliant codes..... 42

school dinner taken on census day .37, 39

SIMS Attendance not in use40, 42

authorising..... 77

retrieving previous authorised census

returns..... 80

school census 77

C

calculating all details 17

census details

checking dates 16

editing description 16

class types

updating 26

configuring

school census defaults..... 15

copying

school census return 81

creating & validating 61

D

default folder

defining 16

deleting

school census return 81

temporary web browser files 75

detail reports

producing 64

DfE compliant codes 41

DfE non-compliant codes 42

dinner money

school dinner taken on census day .37, 38

disability access fund21, 72

E

early years data

30 hour code..... 21

disability access fund 21

extended funded hours 21

funded hours..... 21

hours at setting 21

report 72

updating..... 21

editing

an unauthorised return 76

class types..... 26

early years 21

editing - funding and monitoring 32

post looked after arrangements 2, 30

school information 19

entering

attendance information..... 40

errors and queries (validation)

resolving 62

exclusions report..... 65

extended funded hours.....21, 72

F

free school meals

eligibility report 68

funded hours

no hours recorded..... 26

updating..... 21

funding and monitoring 71

H

hours at setting

no hours recorded..... 26

I | Index

updating	21	attendance report	66
L		early years report	72
learning aims.....	43	exclusions report	65
adding to census	47, 56	free school meal eligibility report.....	68
comparison reports		learning aims by status report	69
course manager.....	52	learning aims comparison with	
previous autumn	51	Course Manager	52
editing	54	learning aims comparison with	
excluding from census.....	59	previous autumn	51
populating the panel	47, 54, 56, 59	leavers learning aims report	69
recalculating	52	on-roll learning aims report	68
P		post looked after arrangements	
permissions.....	7	report.....	72
post looked after arrangements		prior attainment report	71
editing	2, 30	programmes of study report	70
report.....	72	reporting - funding and monitoring	
preparation		report.....	71
checking data	8	school dinner taken report.....	67
minimum version of SIMS.....	8	SEN report.....	67
permissions	7	top-up funding report	71
previous authorised census returns.....	80	specifying security message	16
printing		resolving	
reports.....	75, 80	errors and queries	62
validation errors summary	62	retrieving	
prior attainment.....	71	authorised census return files.....	80
pupil/student reconciliation		return	
universal infant school meal.....	37	permissions	7
Q		S	
queries and errors (validation)		school census return	
resolving	62	authorising	77
R		configuring the storage folder.....	15
reporting		copying	81
deleting temporary web browser files ..	75	deleting.....	81
designing reports	80	new	13
producing detail reports.....	64	submitting	79
absentees report	67	school dinner taken on census day	37
address details report.....	67	school dinner taken report	67
alternative provision report	2, 72	school information	
attendance report	66	checking.....	8, 19
early years report	72	security	
exclusions report	65	deleting temporary files	75
free school meal eligibility report.....	68		
learning aims by status report	69		
learning aims comparison with			
Course Manager	52		
learning aims comparison with			
previous autumn	51		
leavers learning aims report	69		
on-roll learning aims report	68		
post looked after arrangements			
report.....	72		
prior attainment report	71		
programmes of study report	70		
reporting - funding and monitoring			
report.....	71		
school dinner taken report.....	67		
SEN report.....	67		
top-up funding report	71		
specifying security message	16		

specifying security message	16
SEN report	67
SIMS	
version required to create return	8
steps to producing the return	
flowchart.....	4
submitting the return.....	79
summary report	
printing.....	75
producing.....	75
T	
temporary web browser files	
deleting	75
top up funding	
top-up funding report.....	71
updating	28, 71
traineeship	
editing	47, 54
leavers learning aims report	69
on-roll learning aims report.....	68
transferring	
submitting the return	79
U	
unauthorised return	
copying	81
deleting	81
editing	76
updating	
class types	26
early years data	21
post looked after arrangements	2, 30
top-up funding	28
uploading the return	79
V	
validation failures	
resolving	62