

Producing the School Census Spring Return Handbook

English Nursery Schools



C | Contents

01 Introduction	1
Overview	1
How has the School Census Spring Return Changed?	2
Steps to Producing the School Census Return	3
Where to Find More Information	4
02 Preparing for the School Census Spring Return	5
Setting Permissions	5
Where to find More Information about Permissions	5
What Version of SIMS is Required?	5
Preparing Data for the School Census Return	6
03 Producing the School Census Spring Return	9
Creating a New School Census Return	9
Configuring the Census Folder.....	10
Specifying the Security Message for Reports	11
Editing Census Details	12
Calculating All Details.....	12
Editing School Information.....	13
Information for Academies.....	14
Editing School Childcare Details	15
Managing Early Years Data	18
Editing Early Years.....	18
Editing Early Years Pupil Premium Receipt	23
Editing Two Year Old Basis for Funding	24
Editing Pupils with Top-Up Funding	25
Editing Pupil Post Looked After Arrangements	27
Managing School Dinners Taken on Census Day	30
Using Dinner Money to Calculate School Dinners Taken on Census Day	32
Using Attendance to Calculate School Dinners Taken on Census Day	33
Using Manual Entry to Record School Dinners Taken on Census Day	33
Entering General Information.....	34
04 Completing the School Census Spring Return	35
Creating and Validating a School Census Return	35
Resolving Validation Errors and Checking Queries	36
Producing Detail Reports.....	39

Generating Detail Reports	42
Printing a Report from your Web Browser	43
Transferring Report Data to a Spreadsheet.....	43
Deleting Temporary Web Browser Files	44
Deleting the cache in Internet Explorer 10	44
Deleting the cache in Internet Explorer 8 and 9	44
Producing the Summary Report	45
Generating the Summary Report.....	45
Editing an Unauthorised Return	45
Authorising the Return	46
Submitting the Return	48
Retrieving Authorised Census Return Files	48
Copying a Return	50
Deleting an Unauthorised Return	51
Index	53

01 | Introduction

Overview	1
How has the School Census Spring Return Changed?	2
Steps to Producing the School Census Return	3
Where to Find More Information	4

Overview

This handbook provides the information needed by Nursery schools in England to complete the School Census Spring 2019 Return, which takes place on Thursday 17 January 2019.

The School Census Spring Return is required to be completed by maintained Nursery schools, Primary schools, Middle schools, Secondary schools, All-Through schools, Special schools, Pupil Referral Units (PRUs), City Technology Colleges (CTCs) and Academies (including free schools) in England. Non-maintained Special schools are also required to submit the return.

Currently, there are three School Census returns each year (i.e. Spring, Summer and Autumn), which collect detailed information about school characteristics and pupil details, e.g. pupil address, free school meals, exclusions, etc. Different data is collected depending on which return is being prepared and your school phase.

A list of items collected from Nursery schools in England for the School Census Spring 2019 Return is available in a later section of this handbook (please see *Preparing Data for the School Census Return* on page 6).

NOTE: The contents of the graphics (dates, names, panel numbers, etc.) are examples only of what you might expect to see when using SIMS to produce the School Census Return.



More Information:

Preparing Data for the School Census Return on page 6

How has the School Census Spring Return Changed?

Changes to the School Census Spring Return include the following:

- Census date 17/01/2019
- Free School Meal Eligibility collected from 05/10/2018 to 17/01/2019.

Early Years Pupil Premium

By the time Early Years Pupil Premium (EYPP) data is collected, the EYPP funding has already been allocated to schools.

Therefore, the previously named **Early Years Pupil Premium Eligibility** grid (in the **Early Years** panel) has been renamed **Early Years Pupil Premium Receipt** and new **Basis for EYPP Eligibility** values are now available for selection.

Similar changes have been made to the report.



More Information:

Editing Early Years Pupil Premium Receipt on page 23

Report Changes

Changes to the School Census reports include the following:

- Proficiency in English information has been removed from the On-Roll Basic Details report because the information is no longer required by the DfE.
- The SEN status S (Statement) has been removed from the SEN detail report header. This SEN status is no longer valid and therefore is not collected in the return.
- The EYPPE report has been renamed EYPPR (Early Years Pupil Premium Receipt). The report now displays information applicable to pupils in receipt of Early Years Pupil Premium.

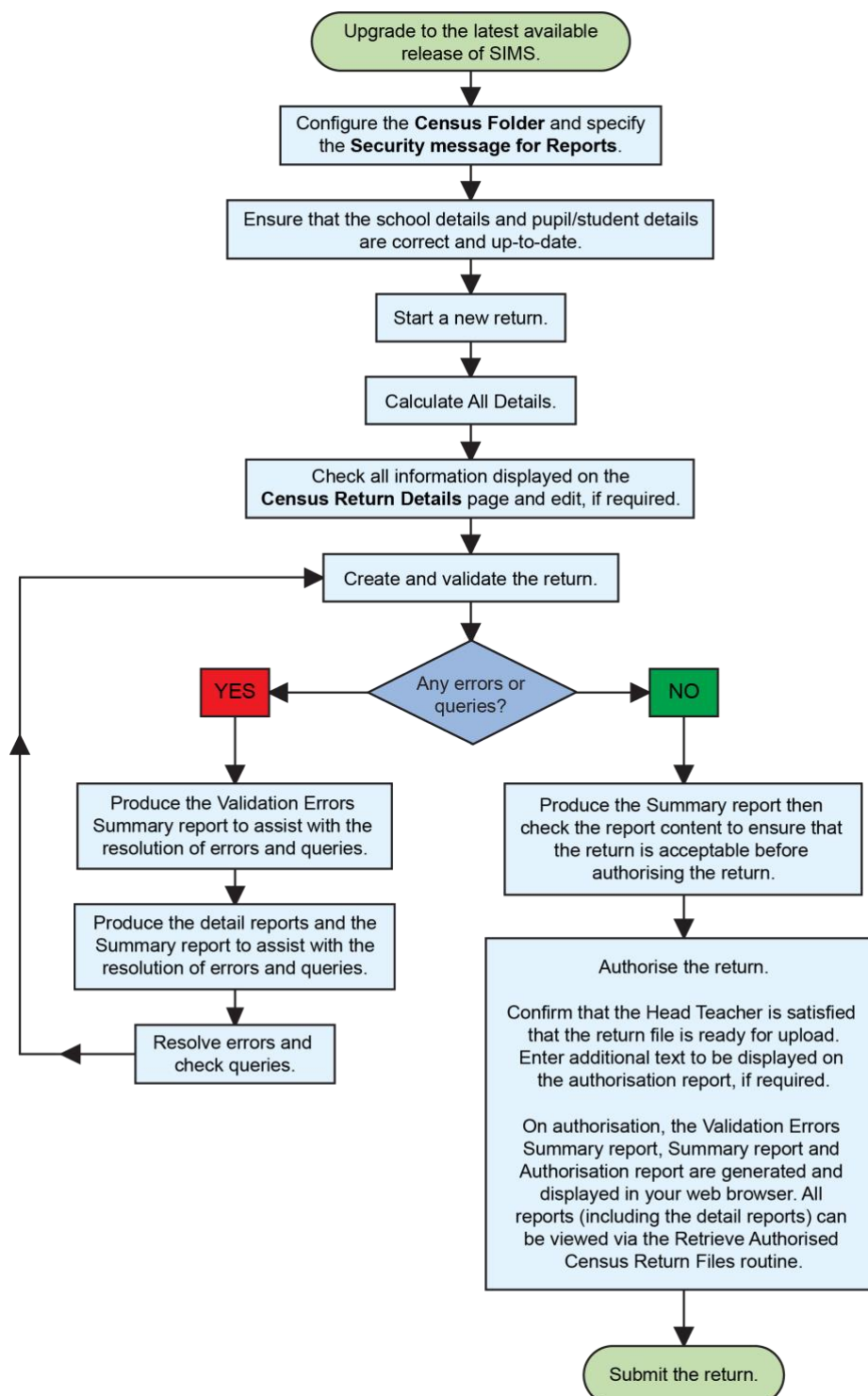


More Information:

Producing Detail Reports on page 39

Steps to Producing the School Census Return

The process of producing the School Census can be separated into a number of steps, some of which might need to be repeated in order to eliminate validation errors and queries.



Where to Find More Information

Online help can be accessed by pressing **F1** or clicking the applicable **Help** button in SIMS.

A wide range of documentation is available from the SIMS **Documentation Centre**, including handbooks, quick reference sheets and tutorials. Click the **Documentation** button (located on the top right-hand side of the SIMS **Home Page**), select the required category and then select the document you require. Alternatively, use the **Search** facility to locate the required document.

Additional Information

In addition to this handbook, a preparation guide that outlines how to prepare your data for the School Census, together with an Errors and Resolutions document that provides suggestions on how to resolve any validation errors or queries, are also available.

To access the School Census documents, please search for CENSUS19 in the SIMS **Documentation Centre**.

02 | Preparing for the School Census Spring Return

Setting Permissions	5
What Version of SIMS is Required?	5
Preparing Data for the School Census Return	6

Setting Permissions

The following permissions are applicable to users who deal with returns.

Running the Return

To run the return, you must be a member of the Returns Manager or Returns Operator user group in System Manager.

Editing and Preparing Data

Users who edit and prepare data must have permissions to access additional areas of SIMS, e.g. pupil details, school details, etc. These users must be a member of the user groups applicable to the areas they are editing (please see *Where to find More Information about Permissions* on page 5).

Importing Revised Files

The Import Fileset functionality enables updates to the Validation Errors Summary and the Summary report (derived from files supplied by the Statutory Body), and detail reports (provided by SIMS), to be imported into SIMS between SIMS releases.

To use the Import Fileset functionality (via **Tools | Setups | Import Fileset**), you must be a member of any of the following user groups in System Manager:

- Returns Manager
- System Manager.

For more information about the Import Fileset functionality, please refer to the applicable preparation guide, available via the **Documentation** button on the SIMS **Home Page**

Where to find More Information about Permissions

Please contact your System Administrator/Manager if you are not sure whether you have the required permissions. For more information, please refer to the *Managing SIMS Users, Groups and Databases* handbook.

What Version of SIMS is Required?

To run the return, you must have the SIMS 2018 Autumn Release (7.184) or later installed.

To check which version of SIMS is installed, open SIMS and then select **Help | About SIMS**. A dialog similar to the one shown in the following graphic is displayed.

The version should read 7.184 or later.



Preparing Data for the School Census Return

Before beginning the process of producing the return, it is advisable to spend time ensuring that all school level and pupil level information is present and accurate in SIMS. For example, ensure that school details are correct, all new pupils have been added to SIMS, all leavers have been recorded and where applicable all exclusions have been recorded, etc.

The following information is collected from Nursery schools for the School Census Spring 2019 Return.

School Level Data

- School Characteristics: LA number, DfE establishment number, school name, school phase, school type, highest and lowest national curriculum year, intake type, governance, school email address and telephone number.
- Miscellaneous:
 - free school meals taken
 - childcare provision on site, signposted off site childcare provision, type of childcare (e.g. before school, after school, etc.), opening time and closing time, number of childcare places, childcare provider, other schools and number of weeks that the childcare provision is open.

Pupil Level Data

- Pupil Identifiers: unique pupil number (UPN) and former UPN, surname, forename, middle names, former surname, preferred surname, gender and date of birth.
- Pupil Characteristics:
 - ethnicity, first language
 - free school meal eligibility start date and end date, UK country in which the eligibility applies, school dinner taken
 - post looked after arrangements
 - service children in education indicator
 - top-up funding indicator, funded hours, extended childcare hours, 30 hour code, disability access fund indicator and hours at setting
 - early years pupil premium receipt (EYPPR) and early years pupil premium basis of funding (EYPPBF)

- two year old basis for funding.
- Pupil Status: enrolment status, date of entry, part-time indicator, boarder indicator and actual national curriculum year group.
- Special Educational Needs: SEN Provision, SEN type ranking, SEN type for each SEN need, member of SEN unit (sometimes called special class) indicator and member of resourced provision indicator.
- Pupil Home Address Information: pupil's home address details, including post code and unique property reference number (UPRN).

For more information and instructions on all of the preparations that need to be carried out before the census return is produced, please refer to the applicable *Preparing for the School Census Spring 2019* guide.

The preparation guide, together with other useful School Census documentation, is available from the SIMS **Documentation Centre** (accessed via the **Documentation** button, which is located on the top right-hand side of the SIMS **Home Page**)

To access the School Census documents, please search for CENSUS19 in the SIMS **Documentation Centre**

03 | Producing the School Census Spring Return

Creating a New School Census Return	9
Configuring the Census Folder.....	10
Specifying the Security Message for Reports	11
Editing Census Details	12
Editing School Information.....	13
Editing School Childcare Details	15
Managing Early Years Data	18
Editing Pupils with Top-Up Funding	25
Editing Pupil Post Looked After Arrangements	27
Managing School Dinners Taken on Census Day	30
Entering General Information.....	34

Creating a New School Census Return

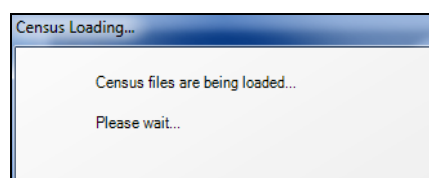
Before creating a new School Census return, ensure that all pupil and school information is present and accurate in SIMS.

The **Census Folder** and **Security message for Reports** must be specified before clicking the **New** button to create a new return.

The School Census Spring 2019 Return collects data for all pupils who are on the register on census day (17/01/2019).

It is possible to create more than one return. This enables you to carry out dry runs to determine what data needs to be added or updated. Any unwanted returns can be deleted, providing they have not been authorised (please see *Deleting an Unauthorised Return* on page 51).

1. Select **Routines | Statutory Returns | School Census** to load the School Census validation and reporting files.



NOTE: The first time that the **Routines | Statutory Returns | School Census** menu route is selected during each SIMS session, there is a delay while the School Census files are loaded.

When the files are loaded, the **Census Return for Spring 2019 Term** browser is displayed.

The Fileset ID is displayed in the browser header for information only.

By default, the **Term** field displays the appropriate term for the selected return, in this instance **Spring 2019**.

2. Ensure that the **Census Folder** is configured correctly and that the required **Security message for Reports** is specified, as described in the following sections.

Configuring the Census Folder

Before creating a return, the folder in which the return file will be saved must be specified.

IMPORTANT NOTES: Due to the sensitive nature of some of the data stored in SIMS, careful consideration must be given when specifying the location of any folder into which you save sensitive data, e.g. census returns, imported and exported CTFs, etc.

You should be mindful of your school's responsibilities with respect to information security. Consider which users have access to the chosen folder, especially if the folder is shared on a server. Please refer to the government website for more information about securing your information (<https://www.gov.uk/service-manual/technology/securing-your-information>). If you are in any doubt, you should consult with your IT Security Officer before proceeding.

The General Data Protection Regulation (GDPR), which replaces the Data Protection Act 1998, is a directive for certain safeguards regarding the use of personal data. It is important that schools process all data (not just the data collected for the school census) in accordance with the full requirements of the GDPR.

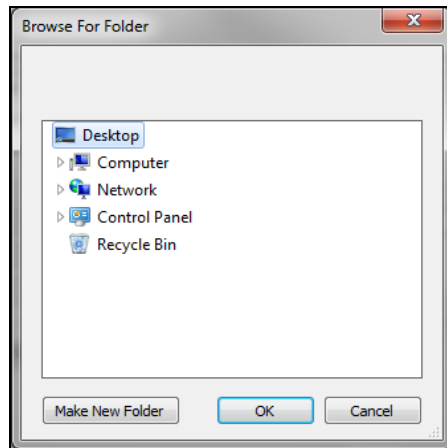
Further information on the GDPR can be found on the Guide to the General Data protection Regulations (GDPR) page of the Information Commissioners Office (ICO) website (<https://ico.org.uk/for-organisations/guide-to-the-general-data-protection-regulation-gdpr>).

1. Specify the folder where the return files are to be stored by entering the folder location in the **Census Folder** field.

Alternatively, click the **Browse** button to display the **Browse For Folder** dialog.



Browse button



Navigate to the location of the required folder and highlight it. If a suitable folder does not exist, click the **Make New Folder** button and enter a suitable name for the new folder.

2. Click the **OK** button to select or create the folder and return to the browser, where the new folder name is displayed.

IMPORTANT NOTE: *If you are changing the location of the folder, ensure that only authorised personnel have access to the new folder, as it will contain sensitive data. For more information, please see the important note at the beginning of this section.*

3. Ensure that the **Security Message for Reports** is appropriate for your school.

Specifying the Security Message for Reports

At the bottom of the browser is a **Security Message for Reports** field, which contains text that will be displayed at the top of each report.

1. The security message text defaults to **This report contains sensitive information**, but can be edited, if required.
2. If any edits are made, you can click the **Default Message** button to revert to the default text.
3. Click the **New** button to display the **Census Return Details** page.

Editing Census Details

The **Census Details** panel displays the following read-only dates:

- The census date is displayed as 17/01/2019.
- FSM (Free School Meal) data collected from 05/10/2018 to 17/01/2019.

By default, the return **Description** is displayed as **School Census Spring 2019**.

1. Check the return **Description** and then edit, if required, e.g. to identify a dry run.

WARNING: Each description used must be unique. An error message is displayed if SIMS identifies a duplicate description.

*A unique description also helps to identify the required return when viewed in the **Census Return for Spring Term** browser and can be particularly useful when creating dry runs or copies of existing returns.*

2. Click the **Calculate All Details** button.

Calculating All Details

Clicking the **Calculate All Details** button extracts the required information from SIMS and displays the results in the applicable panels of the **Census Return Details** page.

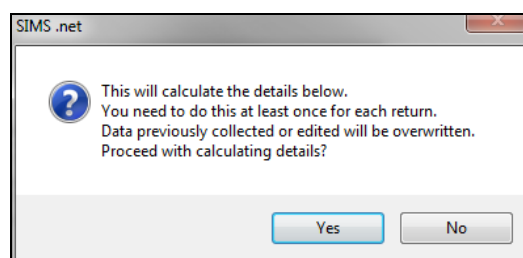
IMPORTANT NOTE: You must calculate all details at least once to populate the various panels for each return.

*Do not use the **Calculate All Details** button more than once if you wish to keep any changes you have made. Clicking the **Calculate All Details** button overwrites any previously collected or edited data (in every panel where details are calculated automatically) with the data currently stored in SIMS.*

Any details that are calculated automatically should be checked and edited, if required.

1. Click the **Calculate All Details** button.

A message advises that any existing data currently shown on the **Census Return Details** page will be overwritten.



2. Click the **Yes** button to calculate all details. At this point, depending on the number of pupils in the school, there may be a short delay while details are calculated.

The applicable panels on the **Census Return Details** page are populated with data.

3. The return can be saved at any point by clicking the **Save** button.

Editing School Information

The **School Information** panel displays details that have previously been recorded on the **School Details** page in SIMS (**Focus | Pupil | Pupil Details**). The information displayed may vary depending on your school and the details entered, e.g. Academy specific information.

The details displayed are read-only but can be amended, if necessary, via the **School Detail** button.

1. If any details are missing or incorrect, click the **School Detail** button to display the **School Detail** dialog, where information applicable to your school is displayed.

2. Add or amend the school details, selecting from the drop-down lists where applicable.

NOTE: The **School Name**, **LA number**, **Establishment Number**, **School Phase** and **Curriculum Years** were set up when SIMS was installed. If these details are incorrect, please contact your Local Support Unit for assistance.

3. Ensure that the establishment's six digit **Unique Reference Number** (URN) is entered. The number is available via the Get information about schools website (<https://get-information-schools.service.gov.uk/>), which is a register of schools and colleges in England.
4. Click the **Save** button then click the **OK** button to return to the **Census Return Details** page, where the updated details are displayed.

Information for Academies

2 School Information							
School Name	Green Abbey School		Previous Name	Previous Name School	Date Changed	31/07/2017	
LA	823	Establishment Number	4321	Previous Estab Number	1234	Earliest DOA	17/07/2017
Telephone	851234	URN		Previous URN		Date Changed	
School E-mail Address	office@ga.org.uk						
School Phase	<input checked="" type="checkbox"/> SS <input type="checkbox"/> Secondary						
School Type	Academies						
Governance	Academies		Intake Type	Comprehensive			
Lowest NC Year	7		Highest NC Year	13			
<input type="button" value="School Detail"/>							

Academies should also ensure that the following information is recorded, if applicable:

- The **School Type** and **School Governance**.
Select **Academies** from the applicable drop-down lists.
- The **Previous Name** and **Date Name Changed**.
- The **Previous Estab Number** and **Earliest DOA** (date of admission).
This information is used by School Census. If the establishment number (DfE number) has changed for sponsor-led Academies, historical information is not collected and the earliest date of admission is reported in the School Census.
- The **Previous URN Number** (used by other census returns) and **Date Number Changed**.
This information is used by the School Workforce Census. For all types of Academies opened in the collection period, the date that the establishment's URN changed is used to determine when the academy was formed. Historical information is not collected from before the date the URN changed.

Editing School Childcare Details

School childcare details are collected annually in the School Census Spring return.

Details can be entered via **Focus | School | School Details**, enabling the information to be maintained at any time throughout the year.

The **Childcare** panel (on the **Census Return Details** page) displays read-only childcare provision information that has been entered previously via School Details. Additional information can be added or existing data edited by clicking the **Edit** button. This provides a direct link to the **School Details** page.

If no childcare information is recorded, a validation error is triggered when the return is run.

Childcare								
<div> <div>Edit</div> <div>Recalculate</div> </div>								
Type	On Site	Signposted	Opening Time	Closing Time	No of Childcare Places	Provider	Other Schools	Weeks Open
Before School Childcare	Yes	No	07:00		40	School	Yes	
After School Childcare	Yes	No		18:00	25	School	No	
Holiday Childcare	Yes	Yes, form...	08:30	16:30	40	Other (non-school) Pr...	Yes	5
Under Fives Childcare	No	No						

Click the **Edit** button in the **Childcare** panel to display the **School Details** page.

School Detail

School Details - Water Babies Nursery School

Save Undo Help

1 Establishment 2 Address 3 Contact Details 4 Sites 5 Documents 6 Childcare

1 Establishment

School Name: Water Babies Nursery School

LA: 823 Central Bedfordshire

Establishment Number: 1050

Unique Reference Number: 012345

School Phase: Nursery

School Type: Maintained Nursery

School Governance: Community

Intake Type: Comprehensive

Previous School Name:

Previous Estab Number:

Previous URN Number:

Boarding Pupils: ☐ Nursery Class ☒

Head Teacher: Mrs Gillian Grosvenor

Curriculum Years: N1 N2

Date Name Changed:

Earliest DOA:

Date Number Changed:

Special Class or Unit: ☐

Main Contact: Mrs G Grosvenor

OK Cancel

1. Click the **Childcare** hyperlink to display the **Childcare** panel, where the current childcare details are displayed.

6 Childcare										Open
Type	On Site	Signposted	Opening Time	Closing Time	No of Childcare Places	Provider	Other Schools	Weeks Open	Notes	
Before School Childcare	Yes	No	07:00		40	School	Yes		Parent and...	
After School Childcare	Yes	No		18:00	25	School	No			
Holiday Childcare	Yes	Yes, form...	08:30	16:30	40	Other (non-s...	Yes	5		
Under Fives Childcare	No	No								

2. Double-click one of the four existing records to display the **Update Childcare Details** dialog. Alternatively, highlight a record then click the **Open** button.

SIMS Update Childcare Details

Childcare Details

Type: Before School Childcare

On Site: Yes

Signposted: No

Opening Time: 07 : 00 hh:mm (24 hrs)

Closing Time: : hh:mm (24 hrs)

No of Childcare Places: 40

Provider: School

Other Schools: Yes

Weeks Open:

Notes: Parent and carers help with childcare.

OK Cancel

3. Enter the required details.
 - **Type** - based on the record you have opened, the type of childcare being provided is displayed automatically. The four types of childcare collected for the return are:
 - **Before School Childcare**
 - **After School Childcare**
 - **Holiday Childcare**
 - **Under Fives Childcare.**
 - **On Site** - select the applicable option from the drop-down list:
 - **Yes** - select this option if childcare is being provided on the school premises.
 - **No** - select this option if childcare is undertaken off the school premises, i.e. your school promotes or points parents towards a regular off-site childcare service, e.g. a private or voluntary organisation.

- **Signposted** - one of the following options must always be selected from the drop-down list:
 - **Yes, formal arrangements including transport** - select this option if your school has formal arrangements with another provider that provides childcare for your pupils, including transport to their site.
 - **Yes, list of providers that pick up from school** - select this option if a list of local providers that will pick up pupils from the school to help parents is provided.
 - **No**
 - **Not Known.**
 - **Opening Time** - enter the time that the service becomes available (not applicable to after school care).

NOTE: Ensure that the time is entered in 24 hour format. A colon should be entered between the hours and the minutes, e.g. 07:00.
 - **Closing Time** - enter the time that the service closed (not applicable to before school care).

NOTE: Ensure that the time is entered in 24 hour format. A colon should be entered between the hours and the minutes, e.g. 17:30.
 - **Number of Childcare Places** - enter the maximum number of childcare places that the service can provide.
 - **Provider** - select the description from the drop-down list that most accurately describes the provider of the service:
 - **School**
 - **School in Partnership** (with another provider)
 - **Other (non-school) Provider.**
 - **Other Schools** - is the service made available to children from other schools? Select as applicable from the drop-down list:
 - **Yes**
 - **No**
 - **Unknown.**
 - **Weeks Open** - enter the number of weeks for which childcare is provided (applicable to holiday and under-fives childcare only).
 - **Notes** - notes can be added and then edited later, if required.
4. Click the **OK** button to return to the **School Details** page.
 5. Click the **Save** button and then the **OK** button to return to the **Census Return Details** page.

Managing Early Years Data

Applicable to schools with Early Years children only

The early years data collected in the School Census is used to determine the amount of the dedicated schools grant (DSG) allocation provided to local authorities to fund their early years providers.

More information about the early years national funding formula (allocations and guidance) is available on the GOV.UK website (<http://www.gov.uk/government/publications/early-years-national-funding-formula-allocations-and-guidance>).

The **Early Years** panel consists of three grids:

- **Early Years**
- **Early Years Pupil Premium Receipt**
- **2 Year Old Basis for Funding.**

Editing Early Years

Early Years data is collected from all schools that have early years pupils on-roll on census day. The following items are collected:

- Hours at Setting
- Funded Hours
- Disability Access Fund
- 30 Hour Code
- Extended Funded Hours.

NOTE: Disability Access Fund, 30 Hour Code and Extended Funded Hours are not collected in the census for pupils aged two at 31/12/2018.

Funded Hours and Hours at Setting

Funded hours are the total number of free child care hours that a child receives. All three and four year old pupils are eligible for 15 hours funded child care a week. Advice about the eligibility of two year old children for funded child care can be found on the DfE website (<https://www.gov.uk/help-with-childcare-costs/free-childcare-2-year-olds>).

Hours at Setting include funded hours (as described previously) plus any additional hours funded by other means.

The hours collected in this return are for the week in which the census day falls.

Date of Birth Ranges	School Type and NC Year Group	Funded Hours Maximum Entitlement
01/09/2014 to 31/12/2016 inclusive	All relevant schools and year groups.	15 hours for pupils where 30 Hour code is present
01/09/2013 to 31/08/2014 inclusive	For pupils in National Curriculum Year groups E1, E2, N1 and N2 only.	15 hours for pupils where 30 Hour code is <u>not</u> present

Disability Access Fund

The Disability Access Fund (DAF) is payable as a lump sum once a year and awarded to three and four year old pupils who meet the following criteria:

- They are in receipt of child Disability Living Allowance (DLA) and
- They access their entitlement to free early learning and childcare, e.g. funded hours.

Disability Access Fund data is collected in this return for pupils who are in receipt of the fund on census day.

Date of Birth Ranges	School Type and NC Year Group
01/09/2014 to 31/12/2015 inclusive	All relevant schools and year groups.
01/09/2013 to 31/08/2014 inclusive	For pupils in National Curriculum Year groups E1, E2, N1 and N2 only.

Extended Funded Hours and 30 Hour Code

Extended Funded Hours are the number of hours that a child can receive in addition to the initial 15 funded hours. Extended Funded Hours are applicable to three and four year old pupils only.

Extended Funded Hours can double the original 15 hours of free child care to 30 hours a week, i.e. 15 funded free entitlement hours + 15 extended entitlement hours = 30 hours, provided that the following criteria are met:

- Both parents must be working (or the sole parent is working in a lone parent family) and live in England.
- Each parent earns, on average, a weekly minimum equivalent to 16 hours at National Minimum Wage or National Living Wage.
- Each parent must have an annual income of less than the specified amount.

Parents who meet the extended funded hours criteria must obtain a unique code from the Tax Office (HM Revenue & Customs), then provide it to the school, together with other details, to confirm their eligibility for extended child care hours.

The 11 digit **30 Hour Code** and the number of extended funded hours are collected in this return for the week in which the census day falls.

Date of Birth Ranges	School Type and NC Year Group	Extended Funded Hours Maximum Entitlement
01/09/2014 to 31/12/2015 inclusive	All relevant schools and year groups.	15 hours
01/09/2013 to 31/08/2014 inclusive	For pupils in National Curriculum Year groups E1, E2, N1 and N2 only.	15 hours

Extended Funded Hours information provided by the DfE can be found on their website

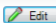
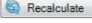
(<https://www.gov.uk/government/publications/30-hours-free-childcare-late-and-early-years-provider-guide>).

Recording Early Years

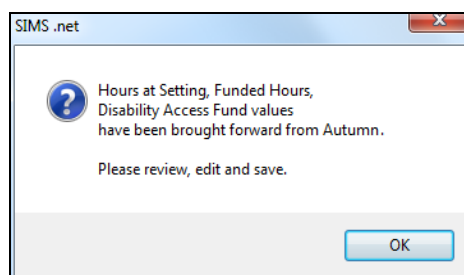
The required data can be recorded:

- via the **Edit** button in the **Early Years** panel
- via **Tools | Statutory Returns Tools | Update Early Years - Update Early Years** page. The data in the **Early Years** panel must be refreshed by clicking the **Recalculate** button after using the Update Early Years routine.

If data has been recorded previously, the values are displayed in the read-only **Early Years** panel. Only cohorts applicable to your school are displayed.

Early Years											
											
Name	Date of Birth	AdNo.	YTI	Reg	Age at 31/08/2018	Age at 31/12/2018	Hours at Setting	Funded Hours	Disability Access Fund	30 Hour Code	Extended Funded Hours
Abrams, Paul	15/12/2014	001651	N2	AM	3	4					
Alberts, Courtney	07/03/2015	001652	N2	PM	3	3					
Archer, Liam	16/04/2016	001703	N1	N1 PM	2	2					
Atkins, Portia	12/01/2015	001653	N2	AM	3	3					
Barnes, Isaac	02/03/2015	001654	N2	PM	3	3					
Clark, Felicity	02/02/2015	001642	N2	AM	3	3					
Dennis, Joshua	17/04/2015	001655	N2	PM	3	3					

- In the **Early Years** panel, click the **Edit** button to display a message informing you that data has been brought forward from the previous census.



- Click the **OK** button to display the **Update Early Years** page. By default, the current term is displayed in the **Census** panel.

TIP: To view the data recorded for a previous term (in the current academic year), select the required **Term** from the drop-down list.

Update Early Years

Save Undo

Census Term Spring 2019

Pupils View Age at 31/08/2018 All YTI All Reg All Status All

Pupils

Disability Access Fund, 30 Hour Code and Extended Funded Hours are NOT collected in the census for pupils aged 2 at 31/12/2018

Name	Date of Birth	AdNo.	YTI	Reg	Age at 31/08/2018	Age at 31/12/2018	Hours at Setting	Funded Hours	Disability Access Fund	30 Hour Code	Extended Funded Hours
Abrams, Paul	15/12/2014	001651	N2	AM	3	4					
Alberts, Courtney	07/03/2015	001652	N2	PM	3	3					
Archer, Liam	16/04/2016	001703	N1	N1 PM	2	2					
Atkins, Portia	12/01/2015	001653	N2	AM	3	3					

3. To add or edit the number of **Hours at Setting**, **Funded Hours** and **Extended Funded Hours** for an individual pupil, select the required criteria in the **Pupils View** panel.

In the **Pupils** panel, highlight the required pupil, click the applicable cell and then enter the required number of hours.

IMPORTANT NOTES: Values for **Funded Hours**, **Hours at Setting** and **Extended Funded Hours** should be entered using two decimal places. For example, 1 hour 15 minutes must be entered as 1.25. Zero (0) is an accepted value.

If the value entered is within the range accepted by SIMS but is higher than what the DfE expects, a validation error is displayed when the return is created and validated. An explanation as to why the value is higher should be recorded on the COLLECT Portal.

Pupils

Disability Access Fund, 30 Hour Code and Extended Funded Hours are NOT collected in the census for pupils aged 2 at 31/12/2018

Name	Date of Birth	AdNo.	YTI	Reg	Age at 31/08/2018	Age at 31/12/2018	Hours at Setting	Funded Hours	Disability Access Fund	30 Hour Code	Extended Funded Hours
Abrams, Paul	15/12/2014	001651	N2	AM	3	4					
Alberts, Courtney	07/03/2015	001652	N2	PM	3	3	30	15	No	5000000000	15
Archer, Liam	16/04/2016	001703	N1	N1 PM	2	2	30	10	Yes		
Atkins, Portia	12/01/2015	001653	N2	AM	3	3					

4. If most of the pupils are receiving the same number of hours, the following method can be used to populate the column quickly:
- In the **Pupils View** panel, select the required year group from the Year Taught In (**YTI**) drop-down list. The selected pupils only are displayed in the **Pupils** panel.
 - Right-click in the **Pupils** panel, then select **Select All** from the drop-down list.
 - Click in one of the highlighted cells of the column you wish to populate, i.e. **Hours at Setting**, **Funded Hours** or **Extended Funded Hours**, then enter the number of hours that is applicable to the majority of pupils.

This number is then entered automatically for all the selected pupils.

- d. Click to the right of the grid to deselect all.
- e. Edit the entry for each pupil who is receiving a different number of hours. This is achieved by highlighting the required pupil, clicking the associated **Hours at Setting, Funded Hours** or **Extended Funded Hours** cell (as applicable) then entering the required number.
5. Indicate whether the pupils are in receipt of the **Disability Access Fund**. Click the applicable cell then select **Yes** or **No** from the drop-down list.
6. Enter the 11 digit **30 Hour Code**, e.g. 50000000000, in the applicable cell, if in receipt of extended funded hours.

IMPORTANT NOTE: Each pupil must have a different 30 hour code. Ensure that all 11 digits are entered.

7. Click the **Save** button.
If there are any pupils for whom zero hours have been recorded, a message is displayed. Click the **Yes** button to save the data or the **No** button to return to the **Update Hours** page, where the number of hours can be entered.
8. Click the **OK** button to return to the **Census Return Details** page, where the updated hours are displayed.

IMPORTANT NOTES:

*If, while completing the return, any of the following processes are performed, click the **Recalculate** button (located at the top right-hand side of the **Early Years** panel) to ensure that the up-to-date data is displayed:*

- any information is update via **Tools | Statutory Return Tools | Update Early Years**
- a new pupil is added in SIMS
- a pupil's date of birth is amended.

*Please note that when information is updated via the **Edit** button, the **Early Years** panel is refreshed automatically.*

Using the Status to determine if Hours at Setting or Funded Hours are recorded

1. On the **Census Return Details** page, click the **Edit** button (located in the **Early Years** panel) to display the **Update Early Years** page.
2. In the **Pupils View** panel, ensure that the required **Age at** date, **YTI** and **Reg** group are selected and then select **No Hours at Setting** (or **No Funded Hours**) from the **Status** drop-down list.
Only pupils who do not have an entry for **Hours at Setting** (or **Funded Hours**) are displayed.
3. Enter the required values for these pupils as described previously.
4. Click the **Save** button.

Editing Early Years Pupil Premium Receipt

The data collected in the Spring School Census provides the DfE with information about Early Years Pupil Premium funding allocated to schools. Information is required regarding three and four year olds who attend school and receive Early Years Pupil Premium (EYPP). Data is required for the following pupils:

- All three year old pupils who were born between 01/09/2014 and 31/12/2015 inclusive.
- Four year old pupils (in any Nursery school year group).
- Four year old pupils (in years E1, E2, N1 and N2 excluding Nursery schools) and born between 01/09/2013 and 31/08/2014 inclusive.

Children are eligible for Early Years Pupil Premium (EYPP) if they are receiving any hours of funded early education and any of the following:

- they meet the benefits-related criteria for Free School Meals

NOTE: Meals delivered as part of the universal entitlement are not Free School Meals.

- they are in care
- they have been adopted from care.

The second grid in the **Early Years** panel deals with a pupil's **Early Years Pupil Premium Receipt** only. The pupils displayed in this grid make up a sub-set of the first grid (i.e. relevant three and four year olds).

Name	Date of Birth	AdNo.	YTI	Reg	Age at 31/08/2018	Age at 31/12/2018	In Care	Basis for EYPP Eligibility
Abrams, Paul	15/12/2014	001651	N2	AM	3	4	No	Receipt - economic
Alberts, Courtney	07/03/2015	001652	N2	PM	3	3	No	Not Eligible
Atkins, Portia	12/01/2015	001653	N2	AM	3	3	No	Receipt - other
Barnes, Isaac	02/03/2015	001654	N2	PM	3	3	No	Receipt - economic an...
Clark, Felicity	02/02/2015	001642	N2	AM	3	3	No	Not Eligible
Dennis, Joshua	17/04/2015	001655	N2	PM	3	3	No	Not Eligible
Elverdon, Astrid	27/11/2015	001704	N1	N1 AM	2	3	No	Not Eligible

Specify the reason why the pupil is receiving EYPP (if applicable) by clicking the cell adjacent to their name, then selecting the required option from the **Basis for EYPP Eligibility** drop-down list:

- **Not Eligible**
- **Receipt - Economic**
In receipt through eligibility for economic reasons, i.e. where they are in receipt via eligibility for the benefits-related criteria for FSM.
- **Receipt - Other**
In receipt through eligibility for other reasons, i.e. where they are in receipt due to eligibility for being in care or due to leaving care through adoption, a special guardianship order or a child arrangement order.

- **Receipt - Economic and Other**

In receipt through eligibility for both reasons, i.e. where they are in receipt through eligibility for both economic and other reasons.

- **Receipt - Unknown**

In receipt through eligibility for unknown basis, i.e. where the school knows the child is in receipt of EYPP (due to receiving funding from the local authority) but does not necessarily know the reason why.

WARNING: If you **Recalculate** or **Calculated All Details** before saving, your **Basis for EYPP Eligibility** edits are lost.



More Information:

EYPPR Report on page 41

Editing Two Year Old Basis for Funding

The **2 Year Old Basis for Funding** grid (located in the **Early Years** panel) enables schools to enter the basis of funding for each pupil with a date of birth between 01/01/2016 and 31/12/2016 inclusive.

Name	Date of Birth	AdNo.	YTI	Reg	Economic Criteria	High level SEN or Disability	Looked After or Adopted From Care
Archer, Liam	16/04/2016	001703	N1	N1 PM	Yes	Yes	No
Jones, Emmeline	17/03/2016	001705	N1	N1 AM	Yes	No	No
Joram, Sara	07/01/2016	001706	N1	N1 PM	No	Yes	No
Parker, Georgy	02/02/2016	001707	N1	N1 P.			
Woodman, Eira	08/03/2016	001709	N1	N1 PM	Yes No		
Zenon, Jeremi	07/05/2016	001710	N1	N1 AM			

1. Click a cell in the **Economic Criteria** column, then select **Yes** or **No** from the drop-down list to indicate if this basis for funding applies to the adjacent two year old pupil.
2. Repeat this process in the **High level SEN or Disability** and **Looked After or Adopted From Care** columns.

NOTE: A pupil might meet one or more of the criterion. Select **Yes** to each applicable basis for funding.

3. Repeat this process for all two year old pupils.



More Information:

2 Year Old Basis for Funding Report on page 41

Editing Pupils with Top-Up Funding

Top-up funding is supplied to schools, in most cases by the Local Authority, to meet the additional costs of support for high needs pupils.

The **Top-up Funding** panel enables you to record the on-roll pupils for whom your school is receiving top-up funding on census day.

If the pupils with top-up funding have been recorded previously via **Tools | Statutory Return Tools | Update Top-Up Funding**, the data is displayed in the **Top-up Funding** panel.

Surname	Preferred Surname	Forename	YTI	Reg	SEN	Ever in
Aaron	Aaron	Chris	6	6KH		No
Davies	Davies	Ben	4	4ES		No
Dexter	Dexter	Bethany	3	3CB		No

The information displayed in the **Top-up Funding** panel is read-only. Updating top-up funding information, e.g. adding or removing a pupil, must be done via the **Edit** button.

1. Click the **Edit** button to display the **Update Pupils with Top-up Funding** dialog. The pupils currently recorded as having top-up funding are displayed in the **Top-up Funding** list (located in the bottom half of the page).

Update

Term

Spring 2019

Students On-Roll on Census Day

Surname

Forename

YTI

All

Reg

All

Preferred Surname

SEN

<Any>

Ever in care at this school

<Any>

Search

Top-up Funding

Add

Remove

Surname	Preferred Surname	Forename	YTI	Reg	SEN	Ever in Care
▶ Aaron	Aaron	Chris	6	6KH		No
Davies	Davies	Ben	4	4ES		No
Dexter	Dexter	Bethany	3	3CB		No

03| Producing the School Census Spring Return

2. Use the **Students On-Roll on Census Day** search criteria to locate the additional pupils you wish to record as having top-up funding.

***TIP:** Click the **Search** button to display a list of all pupils who have not been defined as having top-up funding. Alternatively, enter all or part of the required search criteria then click the **Search** button.*

Surname	Preferred Surname	Forename	YTI	Reg	SEN	Ever in Care
White	White	Aurora	4	4SL		No
Whitehead	Whitehead	William	R	ELM		No
Whitmore	Whitmore	Amie	2	2JB		No

Top-up Funding Add Remove

3. Highlight the pupil(s) who you want to record as having top-up funding then click the **Add** button to move the selected pupil(s) to the **Top-up Funding** list.

One or more pupils can be selected using the **Ctrl+click** or **Shift+click** functionality.

Term: Spring 2019 Students On-Roll on Census Day

Surname: white Forename: YTI: All Reg: All

Preferred Surname: SEN: <Any> Ever in care at this school: <Any> Search

Surname	Preferred Surname	Forename	YTI	Reg	SEN	Ever in Care
Whitehead	Whitehead	William	R	ELM		No

Top-up Funding + Add - Remove

Surname	Preferred Surname	Forename	YTI	Reg	SEN	Ever in Care
Aaron	Aaron	Chris	6	6KH		No
Davies	Davies	Ben	4	4ES		No
Dexter	Dexter	Bethany	3	3CB		No
White	White	Aurora	4	4SL		No
Whitmore	Whitmore	Amie	2	2JB		No

- To remove a pupil from the **Top-up Funding** list, highlight the required pupil then click the **Remove** button. The pupil's record is moved to the **Students On-Roll on Census Day** list, from where it can be reselected, if required.
- Click the **Update** button to save the data and arrange the list of pupils in **Surname** order.
- Click the **OK** button (located at the bottom right-hand side of the screen) to return to the **Census Return Details** page, where the updated information is displayed in the **Top-up Funding** panel.



Additional Resources:

Preparing for the School Census Spring 2019 Return handbook

Editing Pupil Post Looked After Arrangements

The Post Looked After Arrangements routine provides schools with the ability to record whether pupils who are on-roll on census day were looked after immediately before adoption or prior to being the subject of a residence or special guardianship order.

If the pupils with post looked after arrangements (PLAA) have been recorded previously via **Tools | Statutory Return Tools | Update Student Post Looked After Arrangements**, the data is displayed in the **Post Looked After Arrangements** panel.

03| Producing the School Census Spring Return

1. Click the **Recalculate** button (in the **Post Looked After Arrangements** panel) to ensure that all pupils who already have a PLAA status are displayed.

Surname	Preferred Surname	Forename	YTI	Reg	Ever in C.	Post Looked After Arrangements
Cain	Cain	William	R	ELM	Yes	Ceased to be looked after through Adoption
Franklin	Franklin	Ethan	2	2JB	Yes	Ceased to be looked after through a Special Guardianship Order (SGO)

The information displayed in the **Post Looked After Arrangements** panel is read-only. Updating the information, e.g. editing the PLAA status or adding a pupil, must be done via the **Edit** button.

2. Click the **Edit** button to display the **Update Pupils Post Looked After Arrangements** page. Any pupils currently recorded as having PLAA are displayed in the **Post Looked After Arrangements** list (located in the bottom half of the page).

Update Students Post Looked After Arrangements

Update

Term: Spring 2019 Students On-Roll on Census Day

Surname: Forename: YTI: All

Preferred Surname: Reg: All Ever in Care at this school: <Any> Search

Surname	Preferred Surname	Forename	YTI	Reg	Ever in Care	Post Looked After Arrangements	Evidence Obtained
Cain	Cain	William	R	ELM	Yes	Ceased to be looked after through Adoption	<input checked="" type="checkbox"/>
Franklin	Franklin	Ethan	2	2JB	Yes	Ceased to be looked after through a Special Guardianship...	<input type="checkbox"/>

3. Use the **Students On-Roll on Census Day** search criteria to locate the additional pupils you wish to record as having PLAA.

TIP: Click the **Search** button to display a list of pupils who have not been defined as having PLAA. Alternatively, enter all or part of the required search criteria then click the **Search** button.

Term: Spring 2019 Students On-Roll on Census Day

Surname: sm Forename: YTI: All

Preferred Surname: Reg: All Ever in Care at this school: <Any> Search

Surname	Preferred Surname	Forename	YTI	Reg	Ever in Care
Smith	Smith	Alex	6	6VC	No
Smith	Smith	Amy	6	6KH	No
Smith	Smith	Erin	1	PINE	No
Smith	Smith	Laura	6	6VC	No
Smyth	Smyth	Cheryl	3	3TO	No
Smyth	Smyth	Jonathan	3	3CB	No
Smyth	Smyth	Rhianna	3	3CB	No
Smythe	Smythe	Vincent	4	4SL	No

Post Looked After Arrangements Add Remove

4. Highlight the pupils who you want to record as having PLAA then click the **Add** button to move the selected pupils automatically to the **Post Looked After Arrangements** list.

One or more pupils can be selected using the **Ctrl+click** or **Shift+click** functionality.

Post Looked After Arrangements Add Remove

Surname	Preferred Surname	Forename	YTI	Reg	Ever in Care	Post Looked After Arrangements	Evidence Obtained
Cain	Cain	William	R	ELM	Yes	Ceased to be looked after through Adoption	<input checked="" type="checkbox"/>
Franklin	Franklin	Ethan	2	2JB	Yes	Ceased to be looked after through a Special Guardianship Order (SGO)	<input type="checkbox"/>
Smith	Smith	Amy	6	6KH	No	Ceased to be looked after through a Special Guardianship Order (SGO)	<input type="checkbox"/>
Smyth	Smyth	Jonathan	3	3CB	No	Ceased to be looked after through Adoption Ceased to be looked after through a Special Guardianship Order (SGO) Ceased to be looked after through a Residence Order (RO) Ceased to be looked after through a Child Arrangement Order (CAO)	<input type="checkbox"/>

5. For each pupil added to the **Post Looked After Arrangements** list, select the post looked after arrangement status by clicking in the applicable cell in the **Post Looked After Arrangements** column then selecting the required status from the drop-down list:
- **Ceased to be looked after through Adoption**
 - **Ceased to be looked after through a Special Guardianship Order (SGO)**
 - **Ceased to be looked after through a Residence Order (RO)**
 - **Ceased to be looked after through a Child Arrangement Order (CAO).**

NOTE: Ceased to be looked after through a Residence Order (RO) has been replaced by **Ceased to be looked after through a Child Arrangement Order (CAO)**.

You do not need to change any existing residence orders but new post looked after arrangements must be recorded as child arrangement orders.

6. Select the **Evidence Obtained** check box if documents have been obtained that provide evidence of the post looked after arrangements.

NOTE: Evidence Obtained is not collected in the School Census return but should be recorded as proof of DfE/Ofsted compliance.

7. To remove a name from the list, highlight it then click the **Remove** button. The record is moved to the **Students On-Roll on Census Day** list, from where it can be reselected, if required.
8. Click the **Update** button to save the information and arrange the list of pupils in surname order.
If you have indicated that evidence has been obtained, you are reminded to ensure that the necessary documents are stored securely outside of SIMS or within the Document Management Server.
9. Click the **OK** button to continue.
10. Click the **OK** button (located at the bottom right-hand side of the screen) to return to the **Census Return Details** page, where the updated information is displayed in the **Post Looked After Arrangements** panel.



Additional Resources:

Preparing for the School Census Spring 2019 Return handbook



More Information:

Post Looked After Arrangements Report on page 41

Managing School Dinners Taken on Census Day

Applicable to schools with pupils in Reception, Year 1 and Year 2

All pupils in Reception, Year 1 and Year 2 in English state-funded schools are offered a Universal Infant School Meal, i.e. a hot meal at lunchtime. This applies to Academies, Free Schools and Pupil Referral Units, as well as to schools maintained by the local authority. The School Census Autumn 2019 Return collects information about pupils who receive a Universal Infant School Meal (school dinner) on census day.

The **School Dinner Taken** panel displays all pupils in Reception, Year 1 and Year 2 who are on-roll on census day. The options available in the panel enable you to record pupils who have taken a Universal Infant School Meals on census day, so that accurate data can be included in the census.

NOTES: The **Reference Date** is provided so that your school can report school dinners taken on an alternative date to census day, if required.

The pupils listed in the **School Dinner Taken** panel are those who are on-roll on census day. Whereas the data calculated via the **Calculate From Attendance** and the **Calculate From Dinner Money** buttons is based on the reference date.

If your school uses SIMS Dinner Money or SIMS Attendance, the number of dinners taken on census day can be calculated using the data recorded when using these modules. If either or both of these modules are not in use, the applicable **Calculate From** button(s), as displayed in the following graphic, are not displayed but the information can be recorded manually.

8 School Dinner Taken

Reference Date: 17/01/2019

All pupils including those eligible for FSM should be included below

Group By: [v] [dropdown]

Calculate From Attendance Calculate From Dinner Money

Surname	Forename	YTI	Reg Group	Enrol Status	School Dinner Taken
Abbott	Jessica	R	ASH	Single Registration	
Abhra	Shaqib	R	ELM	Single Registration	
Ackton	Charlotte	R	PINE	Single Registration	
Adams	Nancy	2	2JB	Single Registration	
Adams	Sadie	1	ELM	Single Registration	
Alala	Candis	2	2GH	Single Registration	
Alala	Michael	R	PINE	Single Registration	
Alyona	Tatyana	1	PINE	Single Registration	
Andrews	Richard	1	ASH	Single Registration	
Barden	Olivia	2	2JB	Single Registration	
Bartram	Piers	1	ASH	Single Registration	
Bateman	Vincent	2	2GH	Single Registration	
Bennet	Eloise	1	PINE	Single Registration	
Benson	Chantal	R	ELM	Single Registration	

Tick All Reset

Total Taken: 0 Total Not Taken: 178

- | | |
|---|--|
| 1 | By default, the Reference Date is set to 17/01/2019 (census day). If, due to exceptional circumstance, e.g. flooding, pupils were unable to take a school dinner on census day, the reference date can be changed to a date that reflects the normal situation. |
| 2 | Click the required column header to sort the data. |
| 3 | The Calculate From Attendance button is displayed only if SIMS Attendance is in use. |
| 4 | The Calculate from Dinner Money button is displayed only if SIMS Dinner Money is in use. |
| 5 | When the Reset button is clicked all existing ticks are removed from the School Dinner Taken column enabling you to start the process again. |
| 6 | The Total Taken and Total Not Taken provide an indication of whether the number of school dinners taken is correct or whether edits are required. |

After the return has been created and validated, the School Dinner Taken detail report can be run to assist with the checking of results.



More Information:

School Dinner Taken Report on page 40

Using Dinner Money to Calculate School Dinners Taken on Census Day

If SIMS Dinner Money is in use, the Dinner Money data recorded for census day can be used to calculate the number of school dinners taken on census day.

Many users of SIMS Dinner Money also use SIMS Attendance. If this is the case the **Calculate From Attendance** button is also displayed.

However, it is recommended that the Calculate From Dinner Money routine is used in the first instance. This is because the Calculate From Attendance routine looks at all pupils with a present or late attendance mark on census day morning. These pupils could be taking any sort of meal on census day, e.g. going home for lunch, pack lunch brought from home, as well as meals provided by the school. The School Census return is only interested in school meals provided by the school.

SIMS Dinner Money takes into account these different meal types and populates the **School Dinner Taken** column with ticks where meals provided by the school only have been taken.

8 School Dinner Taken

Reference Date: 17/01/2019

All pupils including those eligible for FSM should be included below

Group By

Calculate From Attendance Calculate From Dinner Money

Surname	Forename	YTI	Reg Group	Enrol Status	School Dinner Taken
Abbott	Jessica	R	ASH	Single Registration	
Abhra	Shaqib	R	ELM	Single Registration	
Ackton	Charlotte	R	PINE	Single Registration	
Adams	Nancy	2	2JB	Single Registration	✓
Adams	Sadie	1	ELM	Single Registration	✓
Alala	Candis	2	2GH	Single Registration	✓
Alala	Michael	R	PINE	Single Registration	
Alyona	Tatyana	1	PINE	Single Registration	✓
Andrews	Richard	1	ASH	Single Registration	✓
Barden	Olivia	2	2JB	Single Registration	✓
Bartram	Piers	1	ASH	Single Registration	✓
Bateman	Vincent	2	2GH	Single Registration	✓
Bennet	Eloise	1	PINE	Single Registration	
Benson	Chantal	R	ELM	Single Registration	

Total Taken: 69 Total Not Taken: 109

1. Click the **Calculate From Dinner Money** button.

WARNING: Clicking the **Calculate From Dinner Money** button overwrites all existing data in the **School Dinner Taken** panel.

If SIMS detects missing information, the following message is displayed:

Dinner Money information is incomplete. Please ensure that meals are recorded in Dinner Money.

2. Click the **Cancel** button to return to SIMS where the missing information can be entered or the **OK** button to continue.

A tick is entered against each pupil who is receiving any type of meal provided by the school on census day. These meals have a meal type category of **School Provided**, with a description such as hot school meal or school sandwich.

3. Edit the information by clicking the required row, in the **School Dinner Taken** column, to toggle between a tick and blank (no meal taken), as required.

Using Attendance to Calculate School Dinners Taken on Census Day

The School Census Return only requires information about school meals provided by the school on census day. However, if SIMS Attendance is in use, the attendance data recorded for census day morning can be used to calculate all pupils who are present and are likely to be taking a school dinner.

The information calculated from attendance can be edited to so that school meals provided by the school only are collected in the return.

1. Click the **Calculate From Attendance** button.

WARNING: Clicking the **Calculate From Attendance** button overwrites existing data in the **School Dinner Taken** panel.

If missing marks exist, a message is displayed:

Please ensure that registers have been taken. Missing marks have been interpreted as absent and no dinner taken.

2. Click the **Cancel** button to return to SIMS where missing marks can be entered or the **OK** button to continue.

A tick is entered against each pupil who is marked as present on census day morning (i.e. AM session). It is possible that some of these pupils are not taking meals provided by the school, e.g. they go home for dinner or bring a packed lunch from home. Meals provided by the school only are required for the return.

Use the **Group By** functionality to group pupils by **Year Taught In, Reg Group** or **Enrolment Status**, enabling school dinners taken information to be updated from class lists, etc.

3. Edit the information by clicking the required row, in the **School Dinner Taken** column, to toggle between a tick and blank (no meal taken), as required.

Using Manual Entry to Record School Dinners Taken on Census Day

If your school is not using SIMS Dinner Money or SIMS Attendance the number of school dinners taken on census day (i.e. meals provided by the school) can be entered manually.

1. Click the **Tick All** button to populate the **School Dinner Taken** column. All pupils are ticked indicating that they received a school dinner on census day.
2. Edit individual records by clicking the applicable **School Dinner Taken** cell to toggle between a tick and blank (no meal taken).

8 School Dinner Taken

Reference Date: 17/01/2019

All pupils including those eligible for FSM should be included below

Group By: [Dropdown]

Buttons: Calculate From Attendance, Calculate From Dinner Money

Surname	Forename	YTI	Reg Group	Enrol Status	School Dinner Taken
Abbott	Jessica	R	ASH	Single Registration	
Abhra	Shaqib	R	ELM	Single Registration	
Ackton	Charlotte	R	PINE	Single Registration	
Adams	Nancy	2	2JB	Single Registration	✓
Adams	Sadie	1	ELM	Single Registration	✓
Alala	Candis	2	2GH	Single Registration	✓
Alala	Michael	R	PINE	Single Registration	
Alyona	Tatyana	1	PINE	Single Registration	✓
Andrews	Richard	1	ASH	Single Registration	✓
Barden	Olivia	2	2JB	Single Registration	✓
Bartram	Piers	1	ASH	Single Registration	✓
Baleman	Vincent	2	2GH	Single Registration	✓
Bennet	Eloise	1	PINE	Single Registration	
Benson	Chantal	R	ELM	Single Registration	

Total Taken: 69 Total Not Taken: 109

The **Total Taken** and **Total Not Taken** (located at the bottom of the panel) provide an indication of whether the number of school dinners taken is correct or whether further edits are required.

3. After the return has been created and validated, run the School Dinner Taken detail report and then check the report contents.
4. Continue editing until school dinner taken details are correct.

WARNING: Clicking the **Reset** button removes all existing ticks from the **School Dinner Taken** column.

Entering General Information

The **General** panel deals with the number of pupils who receive Free School Meals on census day.

12 General	
Number of free school meals taken on census day	<input style="width: 50px; text-align: center;" type="text" value="0"/>
<small>FSM taken excludes the infant pupil universal entitlement (except for pupils in R,1,2 who are eligible for FSM)</small>	

Enter the **Number of free school meals taken on census day** by pupils, in any year, who are eligible for Free School Meals.

- Pupils should be included only if they meet the Free School Meals eligibility criteria (i.e. in respect to family income).
- If your school has pupils of a young age, do not include pupils taking school meals in Reception, Year 1 and Year 2, if they are not eligible for Free School Meals in respect to family income, e.g. they are receiving a Universal Infant School Meal only.



More Information:

General Report on page 42

When this panel is complete and you are satisfied that all the details on the **Census Return Details** page are correct, the census return file can be created and validated (please see *Creating and Validating a School Census Return* on page 35).

04 | Completing the School Census Spring Return

Creating and Validating a School Census Return	35
Producing Detail Reports	39
Generating Detail Reports	42
Printing a Report from your Web Browser	43
Transferring Report Data to a Spreadsheet.....	43
Deleting Temporary Web Browser Files	44
Producing the Summary Report	45
Editing an Unauthorised Return	45
Authorising the Return	46
Submitting the Return	48
Retrieving Authorised Census Return Files	48
Copying a Return	50
Deleting an Unauthorised Return	51

Creating and Validating a School Census Return

A return must be created, validated and authorised before it can be sent to your Local Authority or uploaded to the DfE COLLECT data collection website (as applicable to your school).

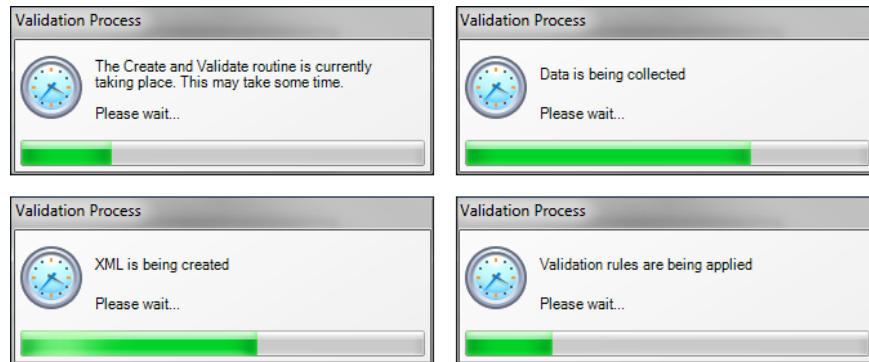
Validating the return creates an unauthorised return file, which is then run against a set of DfE rules. When the validation is complete, a list of errors and queries is displayed.

An error is caused by either missing or inaccurate data, whilst a query highlights data which is unusual or not as expected, e.g. there are no pupils with special educational needs.

1. Select **Routines | Statutory Returns | School Census** to display the **Census Return** browser.
2. Click the **Search** button to display a list of returns.
3. Double-click the required return to display the **Census Return Details** page.
4. Click the **Create & Validate** button to begin the process. There may be a short delay, depending on the number of pupils at your school.

04| Completing the School Census Spring Return

A progress bar is displayed indicating that the Create and Validate process is being performed.



When the validation process is complete, the **Validation Errors Summary** panel is displayed at the bottom of the screen.

Resolving Validation Errors and Checking Queries

After creating the return file and validating the data, any errors and queries found are listed in the **Validation Errors Summary** panel at the bottom of the **Census Return Details** page.

Validation Errors Summary				
Return Validated - 10 Validation rules failed (Errors - 4, Queries - 6)				
Student Search	ALL	Total of displayed rows : 10	To resolve an error, click in row to navigate to the relevant screen	Enter Student Name, DOB (YYYY-MM-DD) or UPN for student filter
Type	Sequence	Message	Location	Solution
F	1500	UPN missing	Name: Abraham, Janel Date of Birth: 2005-05-18, Female/UPN	# Go to Focus Student Student Details and add or issue a UPN
F	1500	UPN missing	Name: Reid, Rosie Date of Birth: 2009-03-07, Female/UPN	# Go to Focus Student Student Details and add or issue a UPN
F	1840	Pupils aged 5 and over Language missing or invalid	Name: Henderson, Jacki Date of Birth: 2010-05-07, Male/UPN: K523299914029	# Go to Focus Student Student Details Ethnicity panel and enter First language
F	2350	Insufficient Address information provided	Name: Baine, Kiki Date of Birth: 2005-01-18, Male/UPN: H220200109012	# Go to Focus Student Student Details Addresses and edit pupil's address
Q	1601Q	Please Check: Pupil's age is out of range for school type	Name: Sungeal, Skasael Date of Birth: 2003-03-28, Female, Age: 12/UPN: B220200106088	# Go to Focus Student Student Details and enter pupil's date of birth
Q	1620Q	Please check: duplicate pupil records with the same Surname, Forename, Gender and Date of birth	Name: Bennison, Hugo Date of Birth: 2010-02-03, Male/UPN:	# Go to Focus Student Student details and check for duplicate pupil record
Q	1620Q	Please check: duplicate pupil records with the same Surname, Forename, Gender and Date of birth	Name: Bennison, Hugo Date of Birth: 2010-02-03, Male/UPN: V823299914008	# Go to Focus Student Student details and check for duplicate pupil record
Q	2355Q	Please check: Pupil record with no address details	Name: Balinski, Cylai Date of Birth: 2010-03-14, Female/UPN: C523299914005	# Go to Focus Student Student Details Addresses and edit pupil's address
Q	2520Q	Please check: sessions possible should not be greater than 150	Name: Aaron, Lizi Date of Birth: 2005-09-01, Female/UPN: J520200109032	# Go to Focus Attendance (Lesson Monitor) Display Marks and check the attendance marks
Q	2520Q	Please check: sessions possible should not be greater than 150	Name: Aaron, Sophie Date of Birth: 2005-09-01, Female/UPN: M820200109034	# Go to Focus Attendance (Lesson Monitor) Display Marks and check the attendance marks

The number of errors and queries found during the Create and Validate process is displayed in the header of the **Validation Errors Summary** panel. Details about each of the errors and queries found are displayed in the columns as described in the following table.

Column	Description
Type	Displays the type of validation rule: Failure (F displayed in red) indicates an error, which must be corrected. Query (Q displayed in black) indicates that there are unusual data conditions. These should be considered and corrected, if necessary.
Sequence	Shows the error or query number.
Message	Displays the text of the error or query message.
Location	Lists the specific record containing the error or query.
Solution	Provides a suggestion on how the error can be corrected or the query checked. Many solutions have a hyperlink (indicated by a #) to the

Column	Description
	appropriate area of SIMS.

To assist in the resolution of any errors and queries:

- When the mouse pointer is hovered over a **Message**, **Location** or **Solution** cell, hover help displays the entire content of that cell.
- When the mouse pointer is hovered over an error or query row, it changes to a hand if a hyperlink is available to the area of SIMS where the issue can be checked.

Type	Sequence	Message	Location	Solution
F	1500	UPN missing	Name: Abraham, Janel Date of Birth: 2005-05-19, Female/UPN	# Go to Focus Student Student Details and add or issue a UPN.
F	1500	UPN missing	Name: Reid, Roseal Date of Birth: 2009-03-07, Female/UPN	# Go to Focus Student Student Details and add or issue a UPN.
F	1840	Pupils aged 5 and over Language missing or invalid	Name: Henderson, Jacki Date of Birth: 2010-05-07, Male/UPN: K923299914029	# Go to Focus Student Student Details Ethnicity/cultural panel and enter First language.
F	2350	Insufficient Address information provided	Name: Bains, Kirki Date of Birth: 2005-01-18, Male/UPN: H820200109012	# Go to Focus Student Student Details Addresses and enter pupil's address
Q	1601Q	Please Check: Pupil's age is out of range for school type.	Name: Sungal, Skarstel Date of Birth: 2003-03-28, Female, Age: 12/UPN: B820200106088	# Go to Focus Student Student Details and enter pupil's date of birth.

NOTE: A hyperlink is also indicated by a hash symbol (#) preceding the **Solution** text.

Click the appropriate hyperlink to display the specific SIMS area where the record(s) can be checked or corrected.

- The Student Search functionality can be used to display all errors and queries relating to a particular pupil. Enter all or part of a UPN, pupil's surname or date of birth in the **Student Search** field then select the required record from the **Student Search** drop-down list to populate the **Student Search** field. Click the **Find** button to display the applicable validation records.

Type	Sequence	Message	Location	Solution
F	1500	UPN missing	Name: Abraham, Janel Date of Birth: 2005-05-19, Female/UPN	# Go to Focus Student Student Details and add or issue a UPN.
F	1500	UPN missing	Name: Reid, Roseal Date of Birth: 2009-03-07, Female/UPN	# Go to Focus Student Student Details and add or issue a UPN.
F	1840	Pupils aged 5 and over Language missing or invalid	Name: Henderson, Jacki Date of Birth: 2010-05-07, Male/UPN: K923299914029	# Go to Focus Student Student Details Ethnicity/cultural panel and enter First language.
F	2350	Insufficient Address information provided	Name: Bains, Kirki Date of Birth: 2005-01-18, Male/UPN: H820200109012	# Go to Focus Student Student Details Addresses and enter pupil's address
Q	1601Q	Please Check: Pupil's age is out of range for school type.	Name: Sungal, Skarstel Date of Birth: 2003-03-28, Female, Age: 12/UPN: B820200106088	# Go to Focus Student Student Details and enter pupil's date of birth.

- Click a **Solution** hyperlink to display the area of SIMS where the associated issue can be checked and/or corrected. When you return to the **Validation Errors Summary** panel, the details of the applicable pupil are displayed in the **Student Search** field. Click the **Find** button to display all errors and queries relating to that pupil.

Type	Sequence	Message	Location	Solution
F	1500	UPN missing	Name: Abraham, Janel Date of Birth: 2005-05-19, Female/UPN	# Go to Focus Student Student Details and add or issue a UPN.
Q	2520Q	Please check: sessions possible should not be greater than 150	Name: Abraham, Janel Date of Birth: 2005-05-19, Female/UPN	# Go to Focus Attendance (Lesson Monitor) Display Marks and check the attendance marks

04| Completing the School Census Spring Return

- Use the **Errors Search** to display the required error or query you want to view. Select **ALL**, **ERRORS**, **QUERIES** or the required number from the drop-down list. The total number of rows that relate to the selected validation is displayed adjacent to the **Error Search** field.

Report

Validation Errors Summary

Return Validated - 10 Validation rules failed (Errors - 4, Queries - 6)

Enter Student Name, DOB (YYYY-MM-DD) or UPN for student filter

ALL

Q

1601Q

ERRORS

Q

1620Q

1610Q

2355Q

2520Q

2520Q

Error Search

ALL

Q

1601Q

1620Q

1610Q

2355Q

2520Q

2520Q

Total displayed rows : 6

To resolve an error, click in row to navigate to the relevant screen

Type

Seq

Location

Solution

Q

1601Q

check: Pupil's age is out of range for school type

Name: Sargal, Skaisel Date of Birth: 2003-03-28, Female, Age: 12UPN: 8820200106088

Go to Focus | Student | Student Details and enter pupil's date of birth.

Q

1620Q

check: duplicate pupil records with the same Surname, Forename, Gender and Date of birth

Name: Beninson, Hugo Date of Birth: 2010-02-03, MaleUPN: 1622299914008

Go to Focus | Student | Student details and check for duplicate pupil record.

Q

1620Q

check: duplicate pupil records with the same Surname, Forename, Gender and Date of birth

Name: Beninson, Hugo Date of Birth: 2010-02-03, MaleUPN: 1622299914008

Go to Focus | Student | Student details and check for duplicate pupil record.

Q

2355Q

check: Pupil record with no address details

Name: Balinski, Cylia Date of Birth: 2010-03-14, FemaleUPN: C822299914005

Go to Focus | Student | Student Details Addresses and edit pupil's address

Q

2520Q

check: sessions possible should not be greater than 150

Name: Aaron, Lizi Date of Birth: 2005-09-01, FemaleUPN: 2820200106032

Go to Focus | Attendance (Lesson Monitor) | Display Marks and check the attendance marks

Q

2520Q

Please check: sessions possible should not be greater than 150

Name: Aaron, Sophie Date of Birth: 2005-09-01, FemaleUPN: M820200106034

Go to Focus | Attendance (Lesson Monitor) | Display Marks and check the attendance marks

- By default, when **ALL** is selected from the **Errors Search** drop-down list, the errors are displayed at the top of the list.
The order of the items in the list can be changed by clicking the appropriate column heading.

Validation Errors Summary				
Return Validated - 10 Validation rules failed (Errors - 4, Queries - 6)		Enter Student Name, DOB (YYYY-MM-DD) or UPN for student filter		
Student Search		ALL		
Error Search	ALL	Total displayed rows : 10	To resolve an error, click in row to navigate to the relevant screen	
Type	Seq	Location	Solution	
F	1600	ERRORS	Name: Abraham, Janet Date of Birth: 2005-05-19, FemaleUPN:	# Go to Focus Student Student Details and add or issue a UPN.
F	1600	QUERIES	Name: Rios, Rosal Date of Birth: 2009-03-07, FemaleUPN:	# Go to Focus Student Student Details and add or issue a UPN.
F	1600	1600	Name: Henderson, Jack Date of Birth: 2010-05-07, MaleUPN: K822299914029	# Go to Focus Student Student Details Ethnicity panel and enter First language
F	1600	1600	Name: Bains, Kiri Date of Birth: 2005-01-18, MaleUPN: M820200106012	# Go to Focus Student Student Details Addresses and edit pupil's address
F	2355	1601Q	Name: Sargal, Skaisel Date of Birth: 2003-03-28, Female, Age: 12UPN: 8820200106088	# Go to Focus Student Student Details and enter pupil's date of birth.
Q	1601Q	check: Pupil's age is out of range for school type	Name: Beninson, Hugo Date of Birth: 2010-02-03, MaleUPN: 1622299914008	# Go to Focus Student Student Details and check for duplicate pupil record.
Q	1620Q	Please check: duplicate pupil records with the same Surname, Forename, Gender and Date of birth	Name: Beninson, Hugo Date of Birth: 2010-02-03, MaleUPN: 1622299914008	# Go to Focus Student Student Details and check for duplicate pupil record.
Q	1620Q	Please check: duplicate pupil records with the same Surname, Forename, Gender and Date of birth	Name: Beninson, Hugo Date of Birth: 2010-02-03, MaleUPN: 1622299914008	# Go to Focus Student Student Details and check for duplicate pupil record.

The width of the columns can be changed by dragging the dividing line between the column headings until the required size is achieved.

- View a summary of validation failures, which is particularly useful if there are a large number of errors/queries, by clicking the **Report** button (located at the left-hand side and directly above the **Validation Errors Summary** panel). The report is displayed in your web browser, e.g. Internet Explorer®, where it can be printed or transferred to another application, if required (please see *Transferring Report Data to a Spreadsheet* on page 43).

The report (Validation Errors Summary.HTML) is saved automatically in the **Census Folder**, which was specified previously in the **Census Return for <season> <year> Term** browser. The original report, which was generated when the **Create & Validate** button was clicked (e.g. <LACode><SchoolNumber>_<SurveyType>_<LACode><LL><Year>_<SerialNumber>_ValidationErrorsSummary.HTML), is also stored in this folder.

For guidance on navigating to files on your local workstation when you are working in a Hosted environment, please contact your System Manager or Local Support Unit.

Resolve as many errors and check as many queries as possible then revalidate the return details. Continue to resolve failures and revalidate the return as many times as necessary.

NOTE: All errors must be resolved and all queries must be investigated.

If at any point you wish to hide the list of error and queries, click the **Close** button located at the top right-hand side of the **Validation Errors Summary** panel. The list is displayed again when the Create and Validate process is run.

Many of the errors generated can be fixed quickly using bulk update functionality (via **Routines | Pupil | Bulk Update**). For more information, please refer to the *Managing Pupil/Students* handbook.

In addition to the **Validation Errors Summary**, an Errors and Resolutions document containing a list of all errors/queries that can be generated is being produced. Explanations and information on how to resolve the errors or whether the queries can be ignored are also included. The document can help to identify the order in which errors should be corrected. For example, if a UPN is missing, several UPN related errors might be generated. Therefore, adding missing UPNs can remove several errors.



More Information:

Transferring Report Data to a Spreadsheet on page 43

Producing Detail Reports

Detail reports can be used to check the data stored in SIMS that has been used to create the return. The reports can be produced as soon as the return has been created and validated.

Each detail report header displays the **Security Message** that was defined in the **Census Return** browser, the **Report Criteria** and the **Total Pupils** who are listed in the report. Also included in the report header is the **School Name**, the **Fileset Number**, the **Filename**, the **Report Created** date, and the **XML Version**.

Where a pupil's National Curriculum Year group is different from what their date of birth would suggest, the applicable **YTI** cell is highlighted in yellow.

The following reports are currently available.

On-Roll Basic Details Report

Report Criteria: Pupils on-roll on census day.

This report provides basic information: UPN, legal surname, legal forename, preferred surname, former surname, date of birth (DOB), gender, year taught in (YTI), date of admission (DOA), enrolment status, ethnicity, part-time status and boarder status.

SEN Report

Report Criteria: On-roll pupil with SEN Provision/Status **E** (Education, Health and Care Plan) or **K** (SEN Support) and SEN Need Types ranked 1 and 2 for pupils with Education, Health and Care Plan or SEN Support.

This report provides a list of pupils who have special educational needs. Displayed are their UPN, legal surname, legal forename, date of birth (DOB), gender, year taught in (YTI), SEN provision, member of SEN unit, SEN type ranking, SEN type and member of resourced provision indicator and on-roll status.

Address Details Report

Report Criteria: Pupils on-roll on census day.

This report provides a list of pupils, their UPN, former UPN, legal surname, legal forename, middle name(s), post code, unique property reference number (UPRN), address details and the administrative area/county.

Definition: Unique Property Reference Number (UPRN) is a unique identifier (reference number) that links together related address records across different software programmes. This enables organisations to collate and share information based on a common reference number.

School Dinner Taken Report

Report Criteria: Pupils on-roll on census day, who have taken school dinner on the reference date.

- Pupils in Year Taught In R, 1 and 2.
- Pupils in Year Taught In X who are aged four to six and who were born between 01/09/2011 and 31/08/2014 inclusive (**Special schools only**).

The report header also displays the total number of pupils, the total number of school dinners taken and the total number of school dinners not taken.

This report provides the following information about pupils who match the report criteria: UPN, legal surname, legal forename, date of birth (DOB), gender, year taught in (YTI) and school dinner taken (yes/no).

Free School Meal Eligibility Report

Report Criteria: On-roll pupils on census day who were eligible for free school meals on or after 05/10/2018 and up to and including census day.

This report provides information on free school meal eligibility for pupils who match the report criteria: UPN, legal surname, legal forename, date of birth (DOB), gender, year taught in (YTI), free school meal eligibility start date, end date and the UK country in which the eligibility applies, and on-roll status.

NOTES: This report includes any free school meals recorded outside of England, e.g. Wales.

Only Free School Meals records where the country recorded is England or <blank> attract the Pupil Premium.

Top-up Funding Report

Report Criteria: On-roll pupils who have been awarded Top-up Funding as at census day.

The report provides the following information: UPN, legal surname, legal forename, date of birth (DOB), gender, year taught in (YTI) and SEN provision.

Early Years Report

Report Criteria: Pupils with early years data who are on-roll on census day.

- All two year old pupils who were born between 01/01/2016 and 31/12/2016 (Hours at Setting and Funded Hours only)
- All three year old pupils who were born between 01/09/2014 and 31/12/2015
- All four year old pupils who were born between 01/09/2013 and 31/08/2014 (with Year Taught In E1, E2, N1 and N2).

The report displays the following information: UPN, legal surname, legal forename, date of birth (DOB), gender, year taught in (YTI), hours at setting, funded hours, 30 hour code, extended funded hours and disability access fund.

EYPPR Report

Report Criteria: Pupils on-roll on census day.

- All 3 year olds born between 01/09/2014 and 31/12/2015 (inclusive)
- 4 year olds (for other than Nursery - in E1, E2, N1 and N2 only) born between 01/09/2013 and 31/08/2014 (inclusive)
- 4 year olds (for Nursery – all pupils).

The Early Years Pupil Premium Receipt (EYPPR) report provides a list of all pupils, their UPN, legal surname, legal forename, preferred surname, former surname, date of birth (DOB), gender, year taught in (YTI), post looked after arrangements, hours at setting, funded hours and their basis for EYPP eligibility (e.g. receipt-economic, receipt-other, receipt-economic and other, receipt-unknown or not eligible).

2 Year Old Basis for Funding Report

Report Criteria: Pupils on-roll on census day having two year old basis for funding data. All two year olds who were born between 01/01/2016 and 31/12/2016.

The report displays the following information: UPN, legal surname, legal forename, date of birth (DOB), gender, year taught in (YTI), hours at setting, funded hours, economic criteria, high level SEN or disability and looked after or adopted from care status.

Post Looked After Arrangements Report

Report Criteria: On-roll pupils who have post looked after arrangements as at census day.

The report provides the following information about pupils who have post looked after arrangements: UPN, legal surname, legal forename, date of birth (DOB), gender, year taught in (YTI) and post looked after arrangements, e.g. ceased to be looked after through a special guardianship order (SGO).

General Report

Where applicable, the General report provides information about:

- free school meals taken on census day.
- childcare provisions during the 2018/2019 academic year.

The report displays the following information: childcare type, on site, signposted, opening time, closing time, number of childcare places, provider, other schools and weeks open.

Generating Detail Reports

Selecting a Single Detail Report

Select the required report from the **Detail Report** drop-down list located at the top of the **Census Return Details** page. The selected report is generated automatically.

Selecting Multiple Detail Reports

1. Select **Multiple reports** from the bottom of the **Detail Report** drop-down list to display the **Detail Reports** dialog. By default, all detail reports are selected.

2. If any reports are not required, deselect the associated check box.
3. Click the **Report** button to generate the selected report(s).

The report(s) are displayed in your web browser, e.g. Internet Explorer, from where the data can be transferred to a spreadsheet such as Microsoft® Excel, if required.

The report(s) are saved automatically in the **Census Folder**, which was specified in the **Census Return** browser, e.g. C:\SCHOOL CENSUS. For guidance on navigating to files on your local workstation when you are working in a Hosted environment, please contact your System Manager or Local Support Unit.

The report is saved with a filename that consists of the following data fields separated by underscores ('_'):

```
<LACode><SchoolNumber>_<SurveyType>_<LACode><LL><Year>_<SerialNumber>_<name of the report>_.html
```

For example:

```
8202001_SC1_823LL19_001_onroll_basic_details_report.html.
```



More Information:

Configuring the Census Folder on page 10

Transferring Report Data to a Spreadsheet on page 43

Printing a Report from your Web Browser

IMPORTANT NOTE: Any printed reports containing information that could identify a person (e.g. their name, address, UPN, etc.) should be used for validation purposes only and should not be retained. The Security Message (displayed at the top of each report) can be customised to include instructions for the destruction of the printed reports, if required.

1. With the generated report displayed in your web browser, select the **Print** option (**Ctrl+P**) to display the **Print** dialog.
2. Ensure that the print settings are correct then click the **Print** button.
3. Click the **Close** button on the top right-hand corner of the web page to close the report and return to the census page.

Transferring Report Data to a Spreadsheet

Transferring a report to a spreadsheet application enables the data to be sorted, the column order to be changed, etc.

With the generated report displayed in your web browser, right-click the report and then select the required option, e.g. **Export to Microsoft Excel**, from the drop-down list.

IMPORTANT NOTE: The spreadsheet contains the same level of sensitive information as the original HTML report from which the information was transferred. Therefore, the spreadsheet file must be saved to a folder with the same level of security.

Deleting Temporary Web Browser Files

It is recommended that, after viewing statutory returns reports, you delete any temporary web browser files to ensure that any cached data (i.e. data stored on the PC itself, which enables high-speed access to previously viewed data) is removed.

This prevents the information, e.g. copies of web pages that are stored in the local cache for faster viewing, remaining on the hard disk of the PC in the temporary directory, where they are not secure because they can still be accessed.

Deleting the cache in Internet Explorer 10

1. Open Internet Explorer 10, then select **Tools | Internet options** to display the **Internet Options** dialog.
2. Select the **General** tab.
3. In the **Browsing history** section, click the **Delete** button to display the **Delete Browsing History** dialog.
4. Ensure that the **Temporary Internet Files and website files** check box is selected then click the **Delete** button.

All temporary files (including any Statutory Returns reports files) that the browser has cached are deleted.

5. Click the **OK** button.

Deleting the cache in Internet Explorer 8 and 9

1. Open Internet Explorer 8 or 9, then click the **Tools** button located at the far right-hand side of the toolbar.
2. Select **Internet options** from the drop-down list to display the **Internet Options** dialog.
3. Select the **General** tab.
4. In the **Browsing history** section, click the **Delete** button to display the **Delete Browsing History** dialog.
5. Ensure that the **Temporary Internet Files** check box is selected then click the **Delete** button.

All temporary files (including any Statutory Returns reports files) that the browser has cached are deleted.

6. Click the **OK** button.

If a different web browser is in use, please refer to the help file applicable to that software package.

Producing the Summary Report

The Summary report enables the school staff, who are involved in the return's preparation, to assess the accuracy and completeness of the return data. It should then be passed to the Head Teacher for their review.

NOTE: When the return is authorised, the Summary report is automatically generated and displayed in your web browser, e.g. Windows® Internet Explorer.

Generating the Summary Report

Click the **Summary** button located at the top of the **Census Return Details** page. The report is automatically displayed in your web browser, e.g. Internet Explorer®, but can be transferred to a spreadsheet such as Microsoft® Excel if required.

The report is saved automatically in the **Census Folder**, which was specified in the **Census Return** browser, e.g. C:\SCHOOL CENSUS. For guidance on navigating to files on your local workstation when you are working in a Hosted environment, please contact your System Manager or Local Support Unit.

The report is saved with a filename that consists of the following data fields separated by underscores ('_'):

```
<LACode><SchoolNumber>_<SurveyType>_<LACode><LL><Year>_<SerialNumber>_<name of the report>_.html
```

For example: 8202001_SC1_820LL19_001_Summary_Report.html.

It is important that the Head Teacher checks all the information on the Summary report before the return is authorised. Your LA might request that a copy of the Summary report is signed by the Head Teacher and sent to the LA when the return has been authorised.



More Information:

Configuring the Census Folder on page 10
 Generating Detail Reports on page 42
 Transferring Report Data to a Spreadsheet on page 43
 Authorising the Return on page 46
 Deleting an Unauthorised Return on page 51

Editing an Unauthorised Return

The return details, e.g. **Description**, **School Information**, etc. can be edited via the **Census Return Details** page at any time prior to authorisation.

IMPORTANT NOTE: An authorised return cannot be edited. If changes are required to an authorised return, use the **Copy** facility to produce a duplicate return (with a unique description) in which the changes can be made.

1. Select **Routines | Statutory Returns | <census name>** to display the browser.
 2. Ensure that the **Census Folder** and the **Security message for Reports** are correct then click the **Search** button to display any previously created returns. Unauthorised returns can be recognised by their .UNA suffix.
 3. Double-click the required return. Alternatively, highlight the required return then click the **Open** button to display the **Census Return Details** page.
 4. Edit the return details as required.
 5. Click the **Create & Validate** button to display the **Validation Errors Summary** panel.
 6. Resolve any errors and check any queries before running the Summary report and detail reports to ensure that the information is correct.
 7. Repeat the editing process again, if necessary.
- Click the **Save** button.



More Information:

Configuring the Census Folder on page 10
Specifying the Security Message for Reports on page 11
Resolving Validation Errors and Checking Queries on page 36
Producing Detail Reports on page 39
Producing the Summary Report on page 45

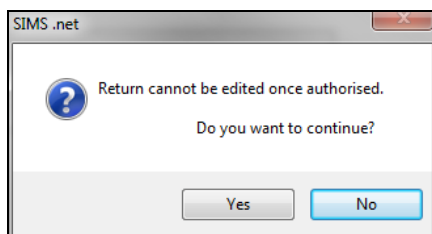
Authorising the Return

A return must be authorised before it can be submitted to your Local Authority or uploaded to the DfE COLLECT data collection website (as applicable to your school).

Before authorising the return, you should ensure that all the information displayed on the **Census Return Details** page is correct and does not require further editing. This is because it is not possible to edit details after the return is authorised. The Summary report can assist in reviewing the information.

1. Click the **Authorise** button.

A message reminds you that the return cannot be edited once it is authorised.



2. Click the **Yes** button to continue or the **No** button to return to SIMS where edits can be made to the data before authorising.

If you choose to continue, the **Head teacher authorisation** dialog is displayed.

3. Enter any additional text to be displayed on the authorisation report, if required. This may be requested by your LA, e.g. to explain the reason for any validation failures.

4. Select the confirmation check box to confirm that the Head Teacher is satisfied that the Summary and/or detail reports have been checked and that the return file is ready for upload to your LA/DfE.

When the confirmation check box is selected, the **Continue** button is activated enabling you to complete the authorisation process.

5. Click the **Continue** button to authorise the return.
 - The Summary report, Authorisation report and Validation Errors Summary report are generated automatically and displayed in your web browser, from where they can be printed, if required.
 - The return file extension changes automatically from UNA (unauthorised) to XML (authorised).
 - All details, i.e. the reports and the XML file, are saved in the **Census Folder**, which was specified previously in the **Census Return for <season> <year> Term** browser.

All reports can be viewed via **Tools | Statutory Return Tools | Retrieve Authorised Census Return Files**. This routine also provides the opportunity to download the files to a different folder.

IMPORTANT NOTE: Ensure that authorised personnel only have access to the download folder because the retrieved files contain sensitive information.

For guidance on navigating to files on your local workstation when you are working in a Hosted environment, please contact your System Manager or Local Support Unit.

If you authorise a return and subsequently need to make amendments, you must either make a copy of the return and work on the copy, or create a new return.

After the return is authorised, reports based on cohorts can be created (via **Reports | Design Reports**), so that items collected in the return can be tracked. Provided that **Student** has been selected as the data area, the Statutory Returns sub-report is available for selection when specifying the fields to be included in the report (the last node).



Additional Resources:

Designing and Running Reports handbook



More Information:

Producing the Summary Report on page 45

Retrieving Authorised Census Return Files on page 48

Copying a Return on page 50

Submitting the Return

When the return has been completed and the Summary report has been signed by the Head Teacher (if requested to do so by your LA), the .XML file can be uploaded to the DfE COLLECT data collection website or sent to your LA, depending on the instructions you have been given.

Guidance about how Local Authorities, schools and academies should submit school census data is available on the GOV.UK website (<https://www.gov.uk/guidance/school-census>).

The authorised return file is located in the folder previously specified in the return browser. For guidance on navigating to files on your local workstation when you are working in a Hosted environment, please contact your System Manager or Local Support Unit.

IMPORTANT NOTE: *An authorised file cannot be edited. If you need to make changes to an authorised file, you must make a copy of the original file, rename it and work on the copy.*

Retrieving Authorised Census Return Files

Authorised returns are stored in your Document Management Server (DMS). The Returns Manager can download and run the reports associated with previous authorised returns enabling the data for the current return to be compared with that submitted previously.

1. Select **Tools | Statutory Returns Tools | Retrieve Authorised Census Return Files** to display the **Retrieve Authorised Census Return Files for <census name>** page.
2. Select the type of census required from the **Return Type** drop-down list to display a list of previous returns that match the selected criteria.

3. By default, the files **Download to** the folder specified in the census browser. To specify a different folder:
 - a. Click the **Select a Folder** button (...) to display the **Browse For Folder** dialog. Navigate to the location of the required folder then highlight it. If a suitable folder does not exist, click the **Make New Folder** button then enter a suitable folder name.

IMPORTANT NOTE: *Ensure that authorised personnel only have access to the download folder because the retrieved files contain sensitive information.*

For guidance on navigating to files on your local workstation when you are working in a Hosted environment, please contact your System Manager or Local Support Unit.

- b. Click the **OK** button to select or create the folder then return to the **Retrieve Authorised Return Files for <census name>** page where the chosen folder name is displayed in the **Download to** field.
4. Highlight the return you wish to retrieve then click the **Retrieve Files** button.

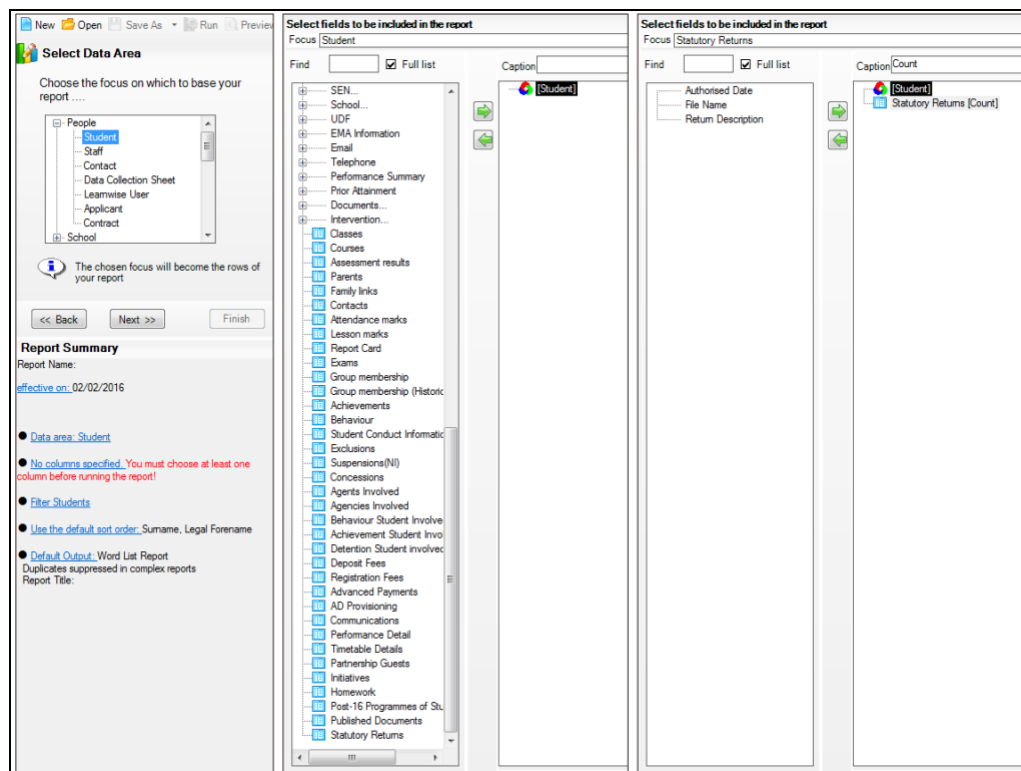
The authorised return file (i.e. the XML file) and all reports associated with the selected return are downloaded from your DMS to the specified folder. The folder and its contents are then displayed automatically, enabling you to open the required files in your web browser.

5. The contents of the specified folder can be viewed again by clicking the **Folder** button adjacent to the **Download to** field.

If you want to create reports based on cohorts, so that items collected in the return can be tracked, a sub-report is available (via **Reports | Design Reports**).

The **Statutory Returns** sub-report is available for selection only if **Student** has been selected as the Data Area.

When you **Select fields to be included in the report**, the **Statutory Returns** sub-report is located at the bottom of the list (the last node). Three options are available for selection under this sub-report: **Authorised Date**, **File Name** and **Return Description**.



Additional Resources:

Designing and Running Reports handbook

Copying a Return

An unauthorised return can be copied and saved as a new return. This enables a 'snapshot' of a return to be taken at any time providing a backup of any manual changes that have been made to the return, for example before recalculating details.

This functionality can also be used to make a copy of an authorised return if the LA or DfE requires it to be resubmitted. The necessary corrections can then be made to the data. The copied return must be saved, created, validated and authorised before resubmitting.

NOTE: Ensure that the return you wish to replicate is not open at the time of copying.

1. Select **Routines | Statutory Returns | <name of census>** to display the census browser.
2. Click the **Search** button to ensure that the list of returns is displayed.
3. Highlight the file you wish to copy then click the **Copy** button.

A message requests confirmation that you wish to make a copy of the selected return.

IMPORTANT NOTE: Any values for attendance (where applicable), Early Years, Post Looked After Arrangements and Top-up Funding will not be copied but will be populated from the current values held in the database. The Create & Validate routine must be run to generate a new census file.

4. Click the **Yes** button to make the copy, which is then displayed in the browser as:
Copy of <description of selected file>.
5. To rename the copied return, highlight it then click the **Open** button to display the **Return Details** page.
6. In the **Census Details** panel, edit the **Description** then click the **Save** button.

IMPORTANT NOTE: The new **Description** must be unique for this return. SIMS will not save the data if a duplicate return description is found.

Deleting an Unauthorised Return

During the return process, a number of copies of the return may be created, e.g. to track progress. When the return has been authorised successfully, it is advisable to delete any versions of the return that are no longer required. This keeps the number of files in the storage folder and listed in the browser to a minimum, therefore removing confusion and lessening the risk of selecting the wrong return.

The delete routine can be used to remove unwanted returns at any time prior to the relevant return being authorised.

IMPORTANT NOTES: When a return file is deleted, any associated files, e.g. Validation Errors Summary, detail reports, etc. that have been produced are also deleted.
Any return files that have already been authorised cannot be deleted.

1. Select **Routines | Statutory Returns | <Return name>** to display the browser.
2. Click the **Search** button to ensure that the list of return files is displayed.
3. Highlight the return file to be deleted then click the **Delete** button. A message prompts for confirmation that the selected return should be deleted.
4. Click the **Yes** button to permanently delete the selected return file and all associated report files.

The deleted return file is removed from the browser and the storage folder, along with any associated reports.

Index

3

30 hour code 18

A

academies 14

access rights 5

address details report 40

attendance information

 school dinner taken on census day. 30, 33

 SIMS Attendance not in use..... 33

authorising..... 46

 retrieving previous authorised census

 returns..... 48

 school census 46

C

calculating all details..... 12

census details

 checking dates 12

 editing description 12

childcare..... 15

 updating 15

configuring

 school census defaults..... 10

copying

 school census return 50

creating

 and validating the return..... 35

creating & validating 35

D

data collected

 school level 6

 pupil level..... 7

default folder

 defining 11

deleting

 school census return 51

 temporary web browser files..... 44

detail reports

 producing..... 39

 transferring to a spreadsheet..... 43

dinner money

 school dinner taken on census day 30, 32

disability access fund 18

E

early years data

 30 hour code 18

 disability access fund 18

 extended funded hours 18

 funded hours 18

 hours at setting..... 18

 pupil premium (EYPP)..... 18

 report..... 41

 updating 18

editing

 an unauthorised return..... 45

 early years 18

 post looked after arrangements 27

 school information 13

errors and queries (validation)

 resolving..... 36

extended funded hours..... 18

F

free school meals

 eligibility report..... 40

 on census day..... 34

funded hours

 no hours recorded 22

 updating 18

H

hours at setting

 no hours recorded 22

 updating 18

I

in care status 18

P

permissions.....	5
post looked after arrangements	
editing.....	27
report.....	41
preparation	
checking data	6
minimum version of SIMS	6
permissions	5
previous authorised census returns	48
printing	
reports	43, 48
validation errors summary	36
pupil premium eligibility/receipt.....	18
pupil reconciliation	
universal infant school meal	30

Q

queries and errors (validation)	
resolving.....	36

R

reporting	
deleting temporary web browser files ..	44
designing reports.....	48
producing detail reports.....	39
address details report.....	40
free school meal eligibility report	40
general report	42
generating detail reports	42
on-roll basic details report	39
post looked after arrangements	
report	41
school dinner taken report.....	40
SEN report.....	39
top-up funding report	40
specifying security message	11
resolving	
errors and queries	36
retrieving	
authorised census return files	48

return	
permissions	5

S

school census return	
authorising.....	46
configuring the storage folder	10
copying.....	50
deleting	51
new	9
school dinner taken on census day	30
school dinner taken report	40
school information	
checking	6, 13
school meals	
taken on census day	34
security	
deleting temporary files.....	44
specifying security message	11
SEN report.....	39
SIMS	
version required to create return.....	6
steps to producing the return	
flowchart.....	3
submitting the return.....	48
summary report	
printing.....	43
producing.....	45

T

temporary web browser files	
deleting	44
top up funding	
top-up funding report.....	40
updating	25, 40
transferring	
report data to a spreadsheet	43

U

unauthorised return	
copying.....	50
deleting	51

editing	45
updating	
early years data	18
post looked after arrangements.....	27
top-up funding	25

V

validation failures	
resolving.....	36



Contact us to find out more

0345 222 1551 • Option 3

or email us on

[missservicedesk@
schoolbusinessservices.co.uk](mailto:missservicedesk@schoolbusinessservices.co.uk)

