

The SIMS logo consists of the letters 'SIMS' in a bold, white, sans-serif font, centered within a white square border. The background of the entire page is a dark blue gradient with dynamic, sweeping light trails in shades of blue, cyan, and white, creating a sense of motion and energy.

SIMS

Producing the School Census Spring 2021 Return

**English All-Through
Schools
applicable to 7.196 onwards**

Handbook

Revision History

Version	Change Description	Date
7.196 - 1.0	Initial release.	18/12/2020

© Capita ESS Limited 2020. All rights reserved.

No part of this publication may be reproduced, photocopied, stored on a retrieval system, translated or transmitted without the express written consent of the publisher. Microsoft® and Windows® are either registered trademarks or trademarks of Microsoft Corporation in the United States and/or other countries.

Capita Doc Ref: SCSpr21_AT_7196/HBK/181220/NR

Providing Feedback on Documentation

We always welcome comments and feedback on the quality of our documentation including online help files and handbooks. If you have any comments, feedback or suggestions regarding the module help file, this handbook (PDF file) or any other aspect of our documentation, please email:

publications@capita.co.uk

Please ensure that you include the module name, version and aspect of documentation on which you are commenting.

C | Contents

01 Introduction	1
Overview	1
How has the School Census Spring Return Changed?	1
Steps to Producing the School Census Return.....	3
Where to Find More Information.....	4
02 Preparing for the School Census Spring Return	5
Setting SIMS Permissions	5
Where to find More Information about Permissions.....	6
What Version of SIMS is Required?.....	6
Preparing Data for the School Census Return	6
03 Producing the School Census Spring Return	9
Creating a New School Census Return	9
Configuring the Census Folder	11
Specifying the Security Message for Reports	12
Editing Census Details	12
Specifying the Selected Period on Census Day.....	13
Calculating All Details	14
Editing School Information	14
Information for Academies	16
Editing School Childcare Details.....	16
Managing Early Years Data	19
Editing Early Years.....	20
Recording Early Years	22
Editing Early Years Pupil Premium Receipt	25
Editing Two Year Old Basis for Funding	27
Editing Class Types	27
Resetting All Class Types	29
Identifying which Pupils have no Class Type Specified	29
Editing Pupil/Students with Top-Up Funding	29
Editing Pupil/Student Post Looked After Arrangements	32
Managing School Dinners Taken on Census Day	35
Using Dinner Money to Calculate School Dinners Taken on Census Day	37
Using Attendance to Calculate School Dinners Taken on Census Day	38
Using Manual Entry to Record School Dinners Taken on Census Day	38

Editing Class Information	39
Editing Registration Classes.....	40
Editing Timetabled Classes	43
Recalculating the Classes Information	44
Adding Classes.....	45
Deleting Classes.....	45
Editing Student Reconciliation	45
Entering Attendance Information	46
SIMS Attendance/Lesson Monitor Users	46
SIMS Attendance/Lesson Monitor Not in Use.....	48
Entering General Information	49
Entering Infant Admissions Appeals Totals.....	49
Entering Primary Admissions Appeals Totals	50
Entering Secondary Admissions Appeals Totals	50
04 Completing the School Census Spring Return	53
Creating and Validating the School Census Return	53
Resolving Validation Errors and Checking Queries	54
Producing Detail Reports	56
Generating Detail Reports.....	61
Printing a Report from your Web Browser	63
Transferring Report Data to a Spreadsheet.....	63
Deleting Temporary Web Browser Files	63
Producing the Summary Report	64
Generating the Summary Report.....	64
Editing an Unauthorised Return	64
Authorising the Return	65
Submitting the Return	67
Retrieving Authorised Census Return Files	67
Copying a Return	68
Deleting an Unauthorised Return.....	69
Index	71

01 | Introduction

Overview	1
How has the School Census Spring Return Changed?	1
Steps to Producing the School Census Return.....	3
Where to Find More Information.....	4

Overview

This handbook provides the information needed by All-Through schools in England to complete the School Census Spring 2021 Return, which takes place on Thursday 21 January.

The School Census Spring Return is required to be completed by maintained Nursery schools, Primary schools, Middle schools, Secondary schools, All-Through schools, Special schools, Pupil Referral Units (PRUs), City Technology Colleges (CTCs) and Academies (including free schools) in England. Non-maintained Special schools are also required to submit the return.

Currently, there are three School Census returns each year (i.e. Spring, Summer and Autumn), which collect detailed information about school characteristics and pupil/student details, e.g. pupil/student address, free school meals, exclusions, etc. Different data is collected depending on which return is being prepared and your school phase.

A list of items collected from All-Through schools in England for the School Census Spring 2021 Return is available in a later section of this handbook.

NOTE: The contents of the graphics (dates, names, panel numbers, etc.) are examples only of what you might expect to see when using SIMS to produce the School Census Return.

How has the School Census Spring Return Changed?

Changes to the School Census Spring Return include the following:

School Census Spring 2021 Key Dates

- Census day 21/01/2021
- Attendance collected from the start of the Autumn term to 31/12/2020
- Exclusions collected from 13/04/2020 to 31/12/2020
- Free School Meal Eligibility collected from 02/10/2020 to 21/01/2021
- Learner Support collected from 01/08/2020 to 21/01/2021.

Recording and Collecting Attendance Information

Not applicable to Nursery schools

For schools using Attendance, data will now be collected on all categories of school attendance, rather than just absence.

For schools that do not use Attendance, it is now possible to record the following information:

- Total number of sessions attending approved educational activity (**TEA Sessions**)
- Total number of sessions unable to attend due to exceptional circumstances (**TECEP Sessions**)
- Total number of sessions unable to attend due to Coronavirus (**TECORONA Sessions**).



More Information:

SIMS Attendance/Lesson Monitor Not in Use on page 48

Changes to Detail Reports

Not applicable to Nursery schools

The Exclusions Detail report has been updated to display up to three exclusion reasons.

Two new groups of attendance codes (**Present** and **Approved Education Activity**) have been added to the Attendance report.



More Information:

Exclusions Report on page 57

Attendance Report on page 57

Class Size Exceptions

Applicable to Primary and All-Through schools only

To highlight classes that require you to enter the reason for the class size exception manually, the class name is now initially displayed in bold and with a yellow background.



More Information:

Recording Reasons for Class Size Exceptions on page 42

Running the School Census During an Exams Embargo Period

Applicable to Secondary, All-Through and Pupil Referral Units only

For schools with a November exams season, it is now possible for the School Census to be run during an exams embargo period.

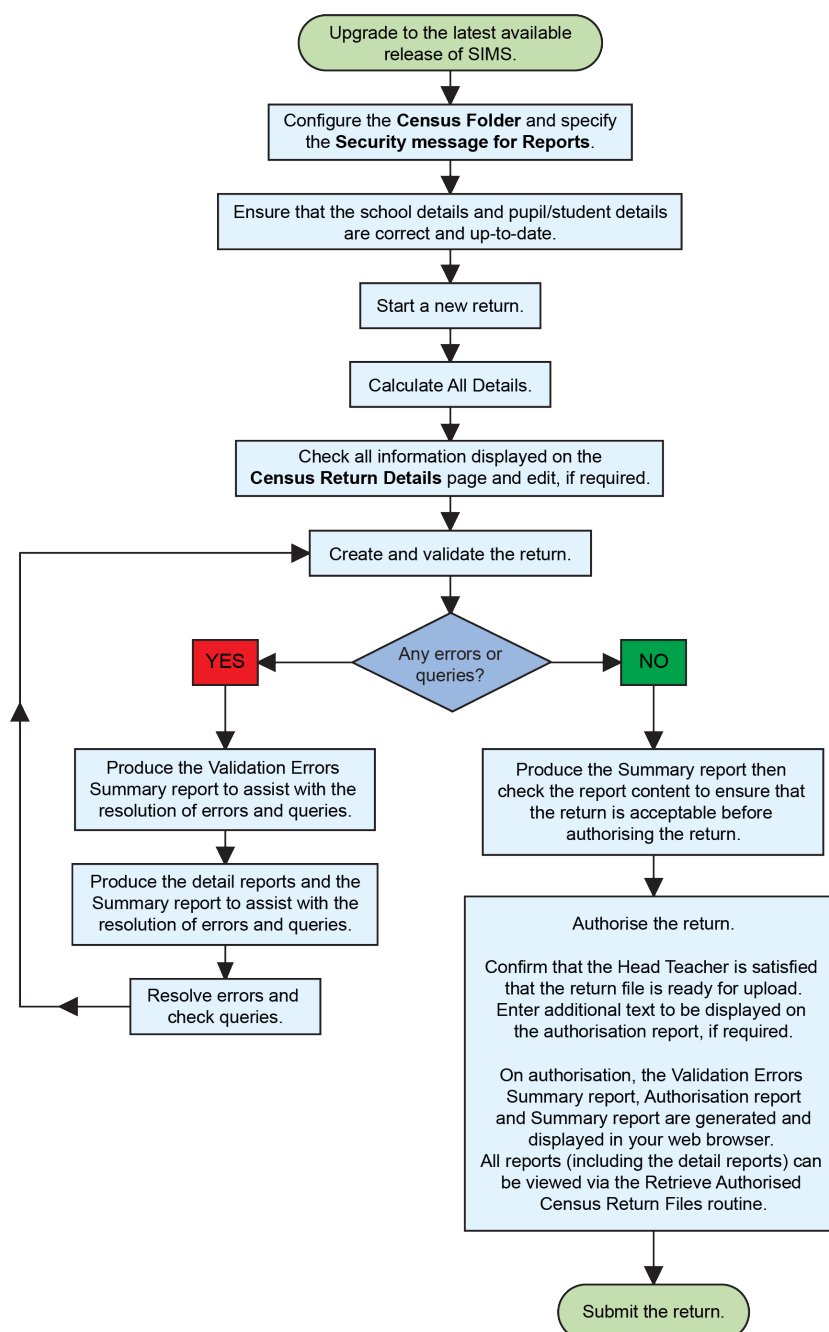


More Information:

Creating and Validating the School Census Return on page 53

Steps to Producing the School Census Return

The process of producing the School Census can be separated into a number of steps, some of which might need to be repeated to eliminate validation errors and queries.



Where to Find More Information

Online help can be accessed by pressing **F1** or clicking the applicable **Help** button in SIMS.

A wide range of documentation is available from the SIMS **Documentation Centre**, including handbooks, quick reference sheets and tutorials. Click the **Documentation** button located on the top right-hand side of the SIMS **Home Page**, select the required category and then select the document you require.

Additional Information

In addition to this handbook, a preparation guide that outlines how to prepare your data for the School Census, is also available from the SIMS **Documentation Centre**.

You are strongly advised to check the following SIMS Newsfeeds because they provide a range of explanatory text, presentations, videos and spreadsheets that you may find useful. These newsfeeds are updated regularly to provide the latest news and answers to enquiries. In particular, the newsfeeds for School Census provide the latest iteration of our spreadsheet for DfE validation rules and SIMS solutions.

The SIMS Newsfeed - Hub provides links to all the statutory returns related newsfeeds

(https://support.capitasoftware.com/csm?id=kb_article_view&sysparm_article=KB0035899).

- SIMS Newsfeed - School Census Spring 2021
- SIMS Newsfeed - DfE CBDS 2020/21
- SIMS Newsfeed - Course Management for SIMS 7 Autumn Release 2020
- SIMS Newsfeed - Series 1700 Filesets for SIMS 7 Autumn Release 2020.

02 | Preparing for the School Census Spring Return

Setting SIMS Permissions	5
What Version of SIMS is Required?	6
Preparing Data for the School Census Return	6

Setting SIMS Permissions

The following permissions are applicable to users who deal with returns.

Running the Return

To run the return, you must be a member of one of the following user groups in System Manager:

- Returns Manager
- Returns Operator.

Editing and Preparing Data

Users who edit and prepare data must have permissions to access additional areas of SIMS, e.g. pupil/student details, school details, etc. These users must be a member of the user groups applicable to the areas they are editing (please see *Where to find More Information about Permissions* on page 6).

Permissions Required to Import a Revised Fileset

The Import Fileset functionality enables updates to the Validation Errors Summary and the Summary report (derived from files supplied by the Statutory Body), and detail reports (provided by SIMS) to be imported into SIMS between SIMS releases.

To use the Import Fileset functionality (via **Tools | Setups | Import Fileset**), you must be a member of one of the following user groups in System Manager:

- Returns Manager
- System Manager.

For more information about the Import Fileset functionality, please refer to the applicable preparation guide, which is available via the SIMS **Documentation Centre**. Click the **Documentation** button located on the top right-hand side of the SIMS **Home Page**.

Where to find More Information about Permissions

Please contact your System Administrator/Manager if you are not sure whether you have the required permissions. For more information, please refer to the *Managing SIMS Users, Groups and Databases* handbook.

An Excel spreadsheet describing the numerous permissions available in SIMS is available on the Capita Software Support Portal

(https://support.capitasoftware.com/csm?id=kb_article_view&sysparm_article=KB0041224).

What Version of SIMS is Required?

To run the return, you must have the SIMS 2020 Autumn Release (7.196) or later installed.

To check which version of SIMS is installed, open SIMS and then select **Help | About SIMS**. A dialog similar to the one shown in the following graphic is displayed.

The version should read 7.196 or later.



Preparing Data for the School Census Return

Before beginning the process of producing the return, it is advisable to spend time ensuring that all school level and pupil/student level information is present and accurate in SIMS. For example, ensure that school details are correct, all new pupil/students have been added to SIMS, all leavers have been recorded and where applicable all exclusions have been recorded, etc.

The following information is collected from All-Through schools for the School Census Spring 2021 Return.

School Level Data

- School Characteristics: LA number, DfE establishment number, school name, school phase, school type, highest and lowest national curriculum year, intake type, governance, school email address and telephone number.
- Admissions Appeals (if applicable, i.e. Academies, Voluntary Aided schools, etc.):
 - Infant: lodged, withdrawn, heard by independent admissions committee, upheld (decided in parents' favour) and rejected.
 - Primary: lodged, withdrawn, heard by independent admissions committee, upheld (decided in parents' favour) and rejected.

- Secondary: lodged, withdrawn, heard by independent admissions committee, upheld (decided in parents' favour) and rejected.
- Pupil/Student Reconciliation: part-time pupil/students not at school, private study pupil/students, pupil/students at another school, pupil/students on work experience and pupil/students at Further Education (FE) colleges.
- Class Information: class name, number of teachers in class, number of teachers on planning and preparation time (PPA), number of adult non-teachers in class, class year group, class type, class key stage, class activity, number of pupil/students in the class from the host school, number of pupil/students in the class from other schools (guest pupil/students), reason for class size exception and number of pupils to which the class size exception reason applies.
- Miscellaneous:
 - free school meals taken
 - childcare provision on site, signposted off site childcare provision, type of childcare (e.g. before school, after school, etc.), opening time and closing time, number of childcare places, childcare provider, other schools and number of weeks that the childcare provision is open.

Pupil/Student Level Data

- Pupil/Student Identifiers: unique pupil number (UPN) and former UPN, unique learner number (ULN), surname, forename, middle names, preferred surname, former surname, gender and date of birth.
- Pupil/Student Characteristics:
 - ethnicity, first language
 - free school meal eligibility start date and end date, UK country in which the eligibility applies, school dinner taken
 - Youth Support Services Agreement (YSSA) indicator, post looked after arrangements
 - service children in education indicator
 - top-up funding indicator, funded hours, extended childcare hours, 30 hour code, disability access fund indicator and hours at setting
 - early years pupil premium receipt (EYPPR) and early years pupil premium basis of funding (EYPPBF)
 - two year old basis for funding
 - learner support code.
- Pupil/Student Status: enrolment status, class type, date of entry, date of leaving, part-time indicator, boarder indicator and actual national curriculum year group.
- Special Educational Needs: SEN provision, SEN type ranking, SEN type for each SEN need, member of SEN unit (sometimes called special class) indicator and member of resourced provision indicator.
- Termly Exclusion Information (13/04/2020 to 31/12/2020): exclusion category, reason for exclusion, exclusion start date, actual number of sessions from which the pupil/student was excluded, SEN provision (formerly stage), exclusion review date, exclusion review result, exclusion reinstatement date and exclusion review SEN expert.

02| *Preparing for the School Census Spring Return*

- Pupil/Student Home Address: pupil/student's home address details, including post code and unique property reference number (UPRN).
- Termly Attendance Information (from the start of the 2020 Autumn term to 31/12/2020): possible sessions, sessions missed due to authorised absence, sessions missed due to unauthorised absence, reason for absence code and number of sessions missed.

For more information and instructions on all of the preparations that need to be carried out before the census return is produced, please refer to the applicable *Preparing for the School Census Spring 2021* guide.

The preparation guide, together with other useful School Census documentation, is available from the SIMS **Documentation Centre** (accessed via the **Documentation** button, which is located on the top right-hand side of the SIMS **Home Page**).

03 | Producing the School Census Spring Return

Creating a New School Census Return	9
Configuring the Census Folder	11
Specifying the Security Message for Reports	12
Editing Census Details	12
Specifying the Selected Period on Census Day	13
Editing School Information	14
Editing School Childcare Details.....	16
Managing Early Years Data	19
Editing Class Types	27
Editing Pupil/Students with Top-Up Funding	29
Editing Pupil/Student Post Looked After Arrangements	32
Managing School Dinners Taken on Census Day	35
Editing Class Information	39
Editing Student Reconciliation	45
Entering Attendance Information	46
Entering General Information	49
Entering Infant Admissions Appeals Totals.....	49
Entering Primary Admissions Appeals Totals	50
Entering Secondary Admissions Appeals Totals	50

Creating a New School Census Return

Before creating a new School Census return, ensure that all pupil/student and school information is present and up-to-date in SIMS.

The School Census Spring 2021 Return collects data for:

- all pupil/students on the register on 21/01/2021 (census day).
- any additional pupil/students not on-roll on census day who:
 - were on-roll for at least one session during the collection period from the start of the 2020 Autumn term to 31/12/2020.
 - were leavers with exclusions or final exclusion reviews between 13/04/2020 and 31/12/2020 (please see *Exclusions Report* on page 57).
 - were awarded Learner Support funding from 01/08/2020 to 21/01/2021.

03| Producing the School Census Spring Return

The **Census Folder** and **Security message for Reports** must be specified before clicking the **New** button to create a new return. A message is displayed if a census folder has not been defined.

It is possible to create more than one return. This enables you to carry out dry runs to determine what data needs to be added or updated. Any unwanted returns can be deleted, providing they have not been authorised (please see *Deleting an Unauthorised Return* on page 69).

NOTE: For schools with a November exams season, it is possible for the School Census to be run during an exams embargo period.

1. Select **Routines | Statutory Returns | School Census** to load the School Census validation and reporting files.

*NOTE: The first time that the **Routines | Statutory Returns | School Census** menu route is selected during each SIMS session, there is a delay while the School Census files are loaded.*

When the files are loaded, the **Census Return for Spring 2021 Term** browser is displayed.

Description	File Name	Census Date	Date Created	Validated	Authorised Date
-------------	-----------	-------------	--------------	-----------	-----------------

By default, the **Term** field displays the appropriate term for the selected return, in this instance **Spring 2021**. The Fileset ID is displayed in the browser header for information only.

2. Ensure that the **Census Folder** is configured correctly and that the required **Security message for Reports** is specified, as described in the following sections.

Configuring the Census Folder

Before creating a return, the folder in which the return file will be saved must be specified.

IMPORTANT NOTES: Due to the sensitive nature of some of the data stored in SIMS, careful consideration must be given when specifying the location of any folder into which you save sensitive data, e.g. census returns, imported and exported CTFs, etc.

You should be mindful of your school's responsibilities with respect to information security. Consider which users have access to the chosen folder, especially if the folder is shared on a server. Please refer to the government website for more information about securing your information (<https://www.gov.uk/service-manual/technology/securing-your-information>). If you are in any doubt, you should consult with your IT Security Officer before proceeding.

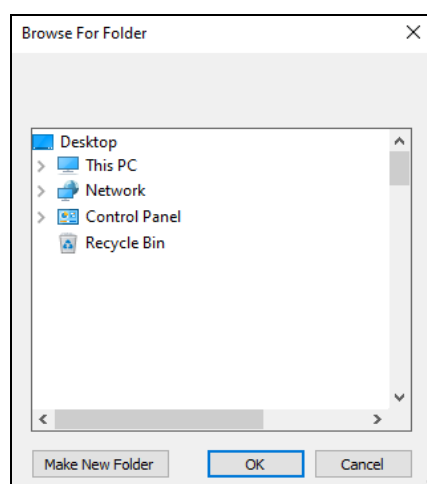
The General Data Protection Regulation (GDPR), which replaces the Data Protection Act 1998, is a directive for certain safeguards regarding the use of personal data. It is important that schools process all data (not just the data collected for the school census) in accordance with the full requirements of the GDPR.

Further information on the GDPR can be found on the Guide to the General Data protection Regulations (GDPR) page of the Information Commissioners Office (ICO) website (<https://ico.org.uk/for-organisations/guide-to-the-general-data-protection-regulation-gdpr>).

1. In the **Census Folder** field, enter the location of the folder where the return files are to be stored.

Alternatively, click the **Browse** button to display the **Browse For Folder** dialog.

 *Browse button*



03| Producing the School Census Spring Return

2. Navigate to the location of the required folder and highlight it. If a suitable folder does not exist, click the **Make New Folder** button, then enter a suitable name for the new folder.

IMPORTANT NOTE: If you are changing the location of the folder, ensure that authorised personnel only have access to the new folder, as the folder will contain sensitive data. For more information, please see the important note at the beginning of this section.

3. Click the **OK** button.
A message dialog requests confirmation that you want to continue.
4. Click the **OK** button to select or create the folder and return to the browser, where the new folder name is displayed.
5. Ensure that the **Security Message for Reports** is appropriate for your school.

Specifying the Security Message for Reports

The **Security message for Reports** field displays the text that will be included in the header of each report.

The default text (**This report contains sensitive information**) can be edited, if required. Clicking the **Default Message** button reverts the amended text to the original default text.

When the security message and census folder are specified, a new return can be created. Click the **New** button to display the **Census Return Details** page.

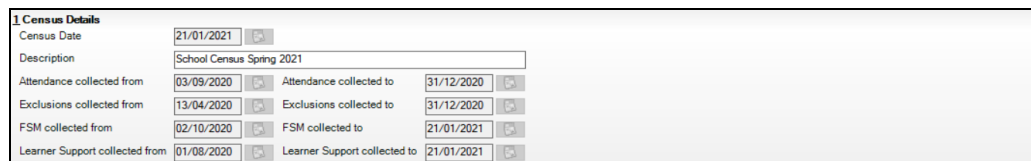
Editing Census Details

The **Census Details** panel displays the following dates (most of which are read-only):

- The census date is displayed as 21/01/2021.
- Attendance data collected from the start of the 2020 Autumn term to 31/12/2020.

The **Attendance Collected from** date displays the start date of the Autumn term as recorded in the School Diary (via **Focus | School | School Diary**).

- Exclusions data collected from 13/04/2020 to 31/12/2020.
- FSM (Free School Meal) data collected from 02/10/2020 to 21/01/2021.
- Learner Support collected from 01/08/2020 to 21/01/2021.



Census Details			
Census Date	21/01/2021		
Description	School Census Spring 2021		
Attendance collected from	03/09/2020	Attendance collected to	31/12/2020
Exclusions collected from	13/04/2020	Exclusions collected to	31/12/2020
FSM collected from	02/10/2020	FSM collected to	21/01/2021
Learner Support collected from	01/08/2020	Learner Support collected to	21/01/2021

By default, the return **Description** is displayed as **School Census Spring 2021** but can be edited, if required, e.g. to identify a dry run.

WARNING: Each description used must be unique. An error message is displayed if SIMS identifies a duplicate description.

A unique description also helps to identify the required return when viewed in the **Census Return for Spring Term** browser and can be particularly useful when creating dry runs or copies of existing returns.

Specifying the Selected Period on Census Day

The selected period on the census day is used in conjunction with the class information collected in the return. It is based on the last digit of the DfE establishment number and is the period on census day (as defined by the DfE) when your school should run the return.

NOTE: These times move down by one each year, i.e. a school using 'one hour before the end of morning school' last year will use 'one hour after the start of morning school' this year.

For more information about the selected period on census day, please refer to the DfE guidance *School census: guide to submitting data* on the DfE website (<https://www.gov.uk/guidance/school-census>).

If different parts of the school use different timetable structures, e.g. the Primary part of a school has registration classes years 2 to 6 and the Secondary part of the school has timetabled classes years 7 to 13, the school should return class information for the timetable structure that applies to Key Stage 1. For example, if lunch is at midday for pupil/students following a primary timetable but at 1pm for pupils following a secondary timetable, the end of morning school should be taken to be midday and not 1pm.

By default, the lowest year on your school's timetable is displayed as the year taught in (YTI) when the timetable classes begin.

1. If the required **Reference Date** is different to that displayed (e.g. because the school is closed on census day due to severe weather conditions), enter an alternative date or select a date from the Calendar.
2. Ensure that the lowest year that you want to report as being on the timetable is displayed in the **YTI when timetabled classes begin** field. Select a different YTI from the drop-down list, if required.

Pupil/students in curriculum year groups below that displayed are assumed to be taught in non-timetabled classes, i.e. registration groups.

The example in the following graphic shows an All-Through school with no timetable for years 2 to 6 but where a timetable is set for years 7 to 13.

3. Select the **Selected Period** from the **Period Name** drop-down list. This is the period on census day that your school should run the return, as defined by the DfE.

NOTE: The **Selected Period** must be specified before you can **Calculate All Details**.

4. If you want to **Include Alternative Curriculum** periods in the **Classes** panel, select the associated check box.
5. Click the **Calculate All Details** button.

Calculating All Details

Clicking the **Calculate All Details** button extracts the required information from SIMS and displays the results in the applicable panels of the **Census Return Details** page.

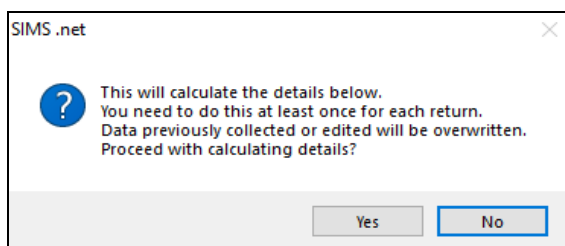
IMPORTANT NOTE: You must calculate all details at least once to populate the various panels for each return.

Do not use the **Calculate All Details** button more than once if you wish to keep any changes you have made. Clicking the **Calculate All Details** button overwrites any previously collected or edited data (in every panel where details are calculated automatically) with the data currently stored in SIMS.

Any details that are calculated automatically should be checked and edited, if required.

1. Click the **Calculate All Details** button.

A message advises that any existing data currently shown on the **Census Return Details** page will be overwritten.



2. Click the **Yes** button to calculate all details.

At this point, depending on the number of pupil/students in the school, there might be a short delay while details are calculated.

The applicable panels on the **Census Return Details** page are then populated with data.

3. The return can be saved at any point by clicking the **Save** button.

Editing School Information

The **School Information** panel displays details that have previously been recorded on the **School Details** page in SIMS (**Focus | School | School Details**). The information displayed might vary depending on your school and the details entered, e.g. Academy specific information.

The details displayed are read-only but can be amended, if necessary, via the **School Detail** button.

3 School Information			
School Name	England Allthrough School		
LA	822	Establishment Number	1001
Telephone	851234	URN	
School E-mail Address	office@ga.org.uk		
School Phase	AT	All Through	
School Type	Comprehensive Upper School 13-18		
Governance	Community	Intake Type	Comprehensive
Lowest NC Year	E1	Highest NC Year	13
School Detail			

1. If any details are missing or incorrect, click the **School Detail** button to display the **School Detail** dialog, where information applicable to your school is displayed.

School Detail

School Details - England Allthrough School

Save Undo Print Help

1 Establishment 2 Address 3 Contact Details 4 Sites 5 Documents 6 Childcare

1 Establishment

School Name: England Allthrough School

LA: 822 Bedford Borough

Establishment Number: 1001

Unique Reference Number: 123456

UK Provider Reference Number:

School Phase: All Through

School Type: Comprehensive Upper School 13-18

School Governance: Community

Intake Type: Comprehensive

Previous School Name: Test

Previous Estab Number: 1234

Previous URN Number: 234567

Boarding Pupils: Nursery Class

Date Name Changed: 16/07/2015

Earliest DOA: 16/07/2015

Date Number Changed: 16/07/2015

Special Class or Unit:

Head Teacher: Mrs Esther Leah Aaron

Main Contact:

OK Cancel

2. Add or amend the school details, selecting from the drop-down lists where applicable.

NOTE: The **School Name**, **LA** number, **Establishment Number**, **School Phase** and **Curriculum Years** were set up when SIMS was installed. If any of these details are incorrect, please contact your Local Support Unit for assistance.

3. Ensure that the establishment's six digit **Unique Reference Number** (URN) is entered. The number is available via the Get information about schools website (<https://get-information-schools.service.gov.uk/>), which is a register of schools and colleges in England.

- Click the **Save** button, then click the **OK** button to return to the **Census Return Details** page, where the updated details are displayed.

Information for Academies

2 School Information			
School Name	Green Abbey School	Previous Name	Previous Name School
LA	823	Establishment Number	4321
Telephone	851234	URN	
School E-mail Address	office@ga.org.uk		
School Phase	SS Secondary		
School Type	Academies		
Governance	Academies	Intake Type	Comprehensive
Lowest NC Year	7	Highest NC Year	13
		Previous Estab Number	1234
		Previous URN	
		Date Changed	31/07/2017
		Earliest DOA	17/07/2017
		Date Changed	
		School Detail	

Academies should also ensure that the following information is recorded, if applicable:

- The **School Type** and **School Governance**.
Select **Academies** from the applicable drop-down lists.
- The **Previous Name** and **Date Name Changed**.
- The **Previous Estab Number** and **Earliest DOA** (date of admission).
This information is used by School Census. If the establishment number (DfE number) has changed for sponsor-led Academies, historical information is not collected and the earliest date of admission is reported in the School Census.
- The **Previous URN Number** (used by other census returns) and **Date Number Changed**.
This information is used by the School Workforce Census. For all types of Academies opened in the collection period, the date that the establishment’s URN changed is used to determine when the academy was formed. Historical information is not collected from before the date the URN changed.

Editing School Childcare Details

School childcare details are collected annually in the School Census Spring return.

Details can be entered via **Focus | School | School Details**, enabling the information to be maintained at any time throughout the year.

The **Childcare** panel (on the **Census Return Details** page) displays read-only childcare provision information that has been entered previously via School Details. Additional information can be added or existing data edited by clicking the **Edit** button. This provides a direct link to the **School Details** page.

If no childcare information is recorded, a validation error is triggered when the return is run.

Type	On Site	Signposted	Opening Time	Closing Time	No of Childcare Places	Provider	Other Schools	Weeks Open
Before School Childcare	No	No						
After School Childcare	Yes	No		17:45	20	School	No	
Holiday Childcare	No	No						
Under Fives Childcare	Yes	No	08:30	18:00	30	School		38

1. Click the **Edit** button in the **Childcare** panel to display the **School Details** page.

School Detail

School Details - England Allthrough School

Save Undo Print Help

1 Establishment 2 Address 3 Contact Details 4 Sites 5 Documents 6 Childcare

1 Establishment

School Name: England Allthrough School

LA: 822 Bedford Borough

Establishment Number: 1001

Unique Reference Number: 123456

UK Provider Reference Number:

School Phase: All Through

School Type: Comprehensive Upper School 13-18

School Governance: Community

Intake Type: Comprehensive

Previous School Name: Test

Previous Estab Number: 1234

Previous URN Number: 234567

Boarding Pupils: Nursery Class Special Class or Unit

Head Teacher: Mrs Esther Leah Aaron

Date Name Changed: 16/07/2015

Earliest DOA: 16/07/2015

Date Number Changed: 16/07/2015

Main Contact:

OK Cancel

2. Click the **Childcare** hyperlink to display the **Childcare** panel, where the current childcare details are displayed.

6 Childcare

Type	On Site	Signposted	Opening Time	Closing Time	No of Childcare Places	Provider	Other Schools	Weeks Open	Notes	Open
Before School Childcare	Yes	No	07:00		40	School	Yes		Parent and...	
After School Childcare	Yes	No		18:00	25	School	No			
Holiday Childcare	Yes	Yes, fom...	08:30	16:30	40	Other (non-s...	Yes	5		
Under Fives Childcare	No	No								

3. Double-click one of the four existing records to display the **Update Childcare Details** dialog. Alternatively, highlight a record then click the **Open** button.

4. Enter the required details.
 - **Type** - based on the record you have opened, the type of childcare being provided is displayed automatically. The four types of childcare collected for the return are:
 - **Before School Childcare**
 - **After School Childcare**
 - **Holiday Childcare**
 - **Under Fives Childcare.**
 - **On Site** - select the applicable option from the drop-down list:
 - **Yes** - select this option if childcare is being provided on the school premises.
 - **No** - select this option if childcare is undertaken off the school premises, i.e. your school promotes or points parents towards a regular off-site childcare service, e.g. a private or voluntary organisation.
 - **Signposted** - one of the following options must always be selected from the drop-down list:
 - **Yes, formal arrangements including transport** - select this option if your school has formal arrangements with another provider that provides childcare for your pupil/students, including transport to their site.
 - **Yes, list of providers that pick up from school** - select this option if a list of local providers that will pick up pupil/students from the school to help parents is provided.
 - **No**
 - **Not Known.**

- **Opening Time** - enter the time that the service becomes available (not applicable to after school care).

NOTE: Ensure that the time is entered in 24 hour format. A colon should be entered between the hours and the minutes, e.g. 07:00.

- **Closing Time** - enter the time that the service closed (not applicable to before school care).

NOTE: Ensure that the time is entered in 24 hour format. A colon should be entered between the hours and the minutes, e.g. 17:30.

- **Number of Childcare Places** - enter the maximum number of childcare places that the service can provide.
 - **Provider** - select the description from the drop-down list that most accurately describes the provider of the service:
 - **School**
 - **School in Partnership** (with another provider)
 - **Other (non-school) Provider.**
 - **Other Schools** - is the service made available to children from other schools? Select as applicable from the drop-down list:
 - **Yes**
 - **No**
 - **Unknown.**
 - **Weeks Open** - enter the number of weeks for which childcare is provided (applicable to holiday and under-fives childcare only).
 - **Notes** - notes can be added and then edited later, if required.
5. Click the **OK** button to return to the **School Details** page.
 6. Click the **Save** button and then the **OK** button to return to the **Census Return Details** page.

Managing Early Years Data

Applicable to schools with Early Years children only

The early years data collected in the School Census is used to determine the amount of the dedicated schools grant (DSG) allocation provided to local authorities to fund their early years providers.

More information about the early years national funding formula (allocations and guidance) is available on the GOV.UK website (<http://www.gov.uk/government/publications/early-years-national-funding-formula-allocations-and-guidance>).

The **Early Years** panel consists of three grids:

- **Early Years**
- **Early Years Pupil Premium Receipt**
- **2 Year Old Basis for Funding.**

Editing Early Years

Early Years data is collected from all schools that have early years pupil/students on-roll on census day. The following items are collected:

- Hours at Setting
- Funded Hours
- Disability Access Fund
- 30 Hour Code
- Extended Funded Hours.

NOTE: Disability Access Fund, 30 Hour Code and Extended Funded Hours are not collected in the census for pupil/students aged two at 31/12/2020.

Funded Hours and Hours at Setting

Funded universal free entitlement hours are the total number of free childcare hours that a child receives. All three and four year old pupil/students are eligible for 15 hours funded child care a week. Advice about the eligibility of two year old children for funded childcare can be found on the DfE website (<https://www.gov.uk/help-with-childcare-costs/free-childcare-2-year-olds>).

Hours at Setting include funded free entitlement hours (as described previously) plus any additional hours funded by other means.

The hours collected in this return are for the week in which the census day falls.

Date of Birth Ranges	School Type and National Curriculum Year Group	Funded Universal Free Entitlement Hours Maximum Entitlement
01/09/2016 to 31/12/2018 inclusive	All relevant schools and year groups.	15 hours
01/09/2015 to 31/08/2016 inclusive	For pupils in National Curriculum Year groups E1, E2, N1 and N2 only.	15 hours

Disability Access Fund

The Disability Access Fund (DAF) is payable as a lump sum once a year and awarded to three and four year old pupil/students who meet the following criteria:

- They are in receipt of child Disability Living Allowance (DLA) and
- They access their entitlement to free early learning and childcare, e.g. funded hours.

Disability Access Fund data is collected in this return for pupil/students who are in receipt of the fund on census day.

Date of Birth Ranges	School Type and National Curriculum Year Group
01/09/2016 to 31/12/2017 inclusive	All relevant schools and year groups.
01/09/2015 to 31/08/2016 inclusive	For pupils in National Curriculum Year groups E1, E2, N1 and N2 only.

Additional information about the Disability Access Fund is available via the DfE website

(<https://www.gov.uk/government/publications/early-years-national-funding-formula-allocations-and-guidance>).

Extended Funded Hours and 30 Hour Code

Extended Funded Hours are the number of hours that a child can receive in addition to the initial 15 funded hours. Extended Funded Hours are applicable to three and four year old pupil/students only.

Extended Funded Hours can double the original 15 hours of free childcare to 30 hours a week, i.e. 15 funded free entitlement hours + 15 extended entitlement hours = 30 hours, provided that the following criteria are met:

- Both parents must be working (or the sole parent is working in a lone parent family) and live in England.
- Each parent earns, on average, a weekly minimum equivalent to 16 hours at National Minimum Wage or National Living Wage.
- Each parent must have an annual income of less than the specified amount.

Parents who meet the extended funded hours criteria must obtain a unique code from the Tax Office (HM Revenue & Customs), then provide it to the school, together with other details, to confirm their eligibility for extended childcare hours.

The 11 digit **30 Hour Code** and the number of extended funded hours are collected in this return for the week in which the census day falls.

Date of Birth Ranges	School Type and National Curriculum Year Group	Maximum Funded Universal Free Entitlement and Extended Free Entitlement Hours
01/09/2016 to 31/12/2017 inclusive	Applicable to all relevant schools and year groups. A valid 30 Hour Code must be provided.	15 funded universal free entitlement hours plus 15 extended free entitlement hours equals 30 hours.
01/09/2015 to 31/08/2016 inclusive	For pupils in National Curriculum Year groups E1, E2, N1 and N2 only. A valid 30 Hour Code must be provided.	15 funded universal free entitlement hours plus 15 extended free entitlement hours equals 30 hours.

Extended Funded Hours information provided by the DfE can be found on their website

(<https://www.gov.uk/government/publications/30-hours-free-childcare-la-and-early-years-provider-guide>).

Recording Early Years

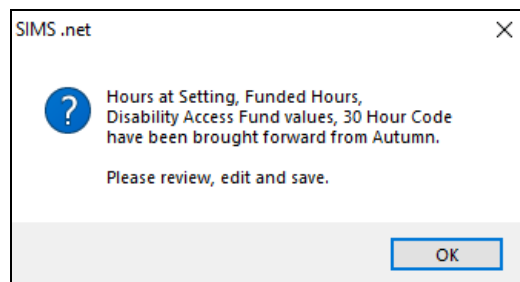
The required data can be recorded:

- via the **Edit** button in the **Early Years** panel
- via **Tools | Statutory Returns Tools | Update Early Years - Update Early Years** page. The data in the **Early Years** panel must be refreshed by clicking the **Recalculate** button after using the Update Early Years routine.

If data has been recorded previously, the values are displayed in the read-only **Early Years** panel. Only cohorts applicable to your school are displayed.

Name	Date of Birth	AdNo.	YTI	Reg	Age at 31/08/2020	Age at 31/12/2020	Hours at Setting	Funded Hours	Disability Access Fund	30 Hour Code	Extended Funded Hours
Abbas,Latif	11/11/2016	001820	N2	PM	3	4	15	15	No		
Andrews,Meili	19/05/2017	001821	N2	AM	3	3	15	15	No		
Andrews,Melissa	07/10/2016	001822	N2	PM	3	4	15	15	No		
Bocetti,Mateo	17/05/2017	001771	N2	PM	3	3	30	15	No	10038877533	15
Bordet,Petra	20/05/2017	001772	N2	AM	3	3	15	15	No		
Clarke,Courtney	10/07/2017	001823	N2	PM	3	3	15	15	No		
Cook,Jermaine	27/11/2016	001824	N2	AM	3	4	15	15	No		

- In the **Early Years** panel, click the **Edit** button to display a message informing you that data has been brought forward from the previous census.



- Click the **OK** button to display the **Update Early Years** page. By default, the current term is displayed in the **Census** panel.

*TIP: To view the data recorded for a previous term (in the current academic year), select the required **Term** from the drop-down list.*

Update Early Years

Update Early Years

Save Undo

Census Term Spring 2021 Update Hours Pupils View Age at 31/08/2020 All YTI All Reg All Status All

Pupils

Disability Access Fund, 30 Hour Code and Extended Funded Hours are NOT collected in the census for pupils aged 2 at 31/12/2020

Name	Date of Birth	AdNo.	YTI	Reg	Age at 31/08/2020	Age at 31/12/2020	Hours at Setting	Funded Hours	Disability Access Fund	30 Hour Code	Extended Funded Hours
Abbas, Latif	11/11/2016	001820	N2	PM	3	4	15	15	No	5000000000	
Andrews, Meili	19/05/2017	001821	N2	AM	3	3	15	15	No		
Andrews, Melissa	07/10/2016	001822	N2	PM	3	4	15	15	No		
Bocetti, Mateo	17/05/2017	001771	N2	PM	3	3	30	15	No	10038877533	
Bordet, Petra	20/05/2017	001772	N2	AM	3	3	15	15	No		
Clark, Courtney	10/07/2017	001823	N2	PM	2	2	15	15	No		

Primary phase schools that have defined Early Years Attendance Patterns (via **Focus | Pupil | Pupil Details**) for pupil/students who are receiving free nursery care can update Hours at Setting automatically.

- Click the **Update Hours** button (applicable to Primary phase schools only).

The number of Hours at Setting that the listed pupil/students are expected to attend during the census week (based on the early years provision times recorded as part of their attendance pattern) are displayed in the **Pupils** panel.

- Edit the values, if required.

NOTE: If your school does not use the Define Early Years Attendance Patterns functionality, the data can be entered in the grid manually.

- To add or edit the number of **Hours at Setting, Funded Hours** and **Extended Funded Hours** for an individual pupil/student, select the required criteria in the **Pupils View** panel.

In the **Pupils** panel, highlight the required pupil/student, click the applicable cell and then enter the required number of hours.

IMPORTANT NOTES: Values for **Funded Hours, Hours at Setting** and **Extended Funded Hours** should be entered using two decimal places. For example, 1 hour 15 minutes must be entered as 1.25. Zero (0) is an accepted value.

If the value entered is within the range accepted by SIMS but is higher than what the DfE expects, a validation error is displayed when the return is created and validated. An explanation as to why the value is higher should be recorded on the COLLECT Portal.

03| Producing the School Census Spring Return

Pupils											
Disability Access Fund, 30 Hour Code and Extended Funded Hours are NOT collected in the census for pupils aged 2 at 31/12/2020											
Name	Date of Birth	AdNo.	YTI	Reg	Age at 31/08/2020	Age at 31/12/2020	Hours at Setting	Funded Hours	Disability Access Fund	30 Hour Code	Extended Funded Hours
Abbas,Lalif	11/11/2016	001820	N2	PM	3	4	15	15	No	5000000000	15
Andrews,Meili	19/05/2017	001821	N2	AM	3	3	15	15	No		
Andrews,Melissa	07/10/2016	001822	N2	PM	3	4	15	15	No		
Bocetti,Mateo	17/05/2017	001771	N2	PM	3	3	30	15	No	10038877533	15
Bordet,Petra	20/05/2017	001772	N2	AM	3	3	15	15	No		

4. If most of the pupil/students are receiving the same number of hours, the following method can be used to populate the column quickly:
 - a. In the **Pupils View** panel, select the required year group from the Year Taught In (**YTI**) drop-down list. The selected pupil/students only are displayed in the **Pupils** panel.
 - b. Right-click in the **Pupils** panel, then select **Select All** from the drop-down list.
 - c. Click in one of the highlighted cells of the column you wish to populate, i.e. **Hours at Setting**, **Funded Hours** or **Extended Funded Hours**, then enter the number of hours that is applicable to the majority of pupil/students.
This number is then entered automatically for all the selected pupil/students.
 - d. Click to the right of the grid to deselect all.
 - e. Edit the entry for each pupil/student who is receiving a different number of hours. This is achieved by highlighting the required pupil/student, clicking the associated **Hours at Setting**, **Funded Hours** or **Extended Funded Hours** cell (as applicable) then entering the required number.
5. Indicate whether the pupil/students are in receipt of the **Disability Access Fund**. Click the applicable cell then select **Yes** or **No** from the drop-down list.
6. Enter the 11 digit **30 Hour Code** in the applicable cell, if in receipt of extended funded hours.

IMPORTANT NOTE: Each pupil/student must have a different 30 hour code. Ensure that all 11 digits are entered.

7. Click the **Save** button.
If there are any pupil/students for whom zero hours have been recorded, a message is displayed. Click the **Yes** button to save the data or the **No** button to return to the **Update Hours** page, where the number of hours can be entered.
8. Click the **OK** button to return to the **Census Return Details** page, where the updated hours are displayed.

IMPORTANT NOTES:

If, while completing the return, any of the following processes are performed, click the **Recalculate** button (located at the top right-hand side of the **Early Years** panel) to ensure that the up-to-date data is displayed:

- any information is updated via **Tools | Statutory Return Tools | Update Early Years**
- a new pupil/student is added in SIMS
- a pupil/student's date of birth is amended.

Please note that when information is updated via the **Edit** button, the **Early Years** panel is refreshed automatically.

Using the Status to determine if Hours at Setting or Funded Hours are recorded

1. On the **Census Return Details** page, click the **Edit** button (located in the **Early Years** panel) to display the **Update Early Years** page.
2. In the **Pupils View** panel, ensure that the required **Age at** date, **YTI** and **Reg** group are selected and then select **No Hours at Setting** (or **No Funded Hours**) from the **Status** drop-down list.

Only pupil/students who do not have an entry for **Hours at Setting** (or **Funded Hours**) are displayed.

3. Enter the required values for these pupil/students as described previously.
4. Click the **Save** button.

Editing Early Years Pupil Premium Receipt

The data collected in the Spring School Census provides the DfE with information about Early Years Pupil Premium funding allocated to schools.

Information is required regarding three and four year olds who attend school and receive Early Years Pupil Premium (EYPP). Data is required for the following pupils:

- All three year old pupils who were born between 01/09/2016 and 31/12/2017 inclusive.
- Four year old pupils (in any Nursery school year group).
- Four year old pupils (in years E1, E2, N1 and N2 excluding Nursery schools) and born between 01/09/2015 and 31/08/2016 inclusive.

Children are eligible for Early Years Pupil Premium (EYPP) if they are receiving any hours of funded early education and any of the following:

- they meet the benefits-related criteria for Free School Meals

NOTE: Meals delivered as part of the universal entitlement are not Free School Meals.

- they are in care
- they have been adopted from care.

The second grid in the **Early Years** panel deals with a pupil/student's **Early Years Pupil Premium Receipt** only. The pupils displayed in this grid make up a sub-set of the first grid (i.e. relevant three and four year olds).

Early Years Pupil Premium Receipt								
Name	Date of Birth	AdNo.	YTI	Reg	Age at 31/08/2020	Age at 31/12/2020	In Care	Basis for EYPP Eligibility
Abbas, Latif	11/11/2016	001820	N2	PM	3	4	No	Not Eligible
Andrews, Meili	19/05/2017	001821	N2	AM	3	3	No	Receipt - economic
Andrews, Melissa	07/10/2016	001822	N2	PM	3	4	No	Not Eligible
Bocetti, Mateo	17/05/2017	001771	N2	PM	3	3	No	Not Eligible
Bordet, Petra	20/05/2017	001772	N2	AM	3	3	No	Not Eligible
Clarke, Courtney	10/07/2017	001823	N2	PM	3	3	No	Receipt - unknown
Cook, Jermaine	27/11/2016	001824	N2	AM	3	4	No	Not Eligible

Specify the reason why the pupil is receiving EYPP (if applicable) by clicking the cell adjacent to their name, then selecting the required option from the **Basis for EYPP Eligibility** drop-down list:

- **Not Eligible**
- **Receipt - Economic**
In receipt through eligibility for economic reasons, i.e. where they are in receipt via eligibility for the benefits-related criteria for FSM.
- **Receipt - Other**
In receipt through eligibility for other reasons, i.e. where they are in receipt due to eligibility for being in care or due to leaving care through adoption, a special guardianship order or a child arrangement order.
- **Receipt - Economic and Other**
In receipt through eligibility for both reasons, i.e. where they are in receipt through eligibility for both economic and other reasons.
- **Receipt - Unknown**
In receipt through eligibility for unknown basis, i.e. where the school knows the child is in receipt of EYPP (due to receiving funding from the local authority) but does not necessarily know the reason why.

WARNING: If you **Recalculate** or **Calculated All Details** before saving, your **Basis for EYPP Eligibility** edits are lost.



More Information:

EYPPR Report on page 60

Editing Two Year Old Basis for Funding

The **2 Year Old Basis for Funding** grid (located in the **Early Years** panel) enables schools to enter the basis of funding for each pupil/student with a date of birth between 01/01/2018 and 31/12/2018 inclusive.

2 Year Old Basis for Funding							
Name	Date of Birth	AdNo.	YTI	Reg	Economic Criteria	High level SEN or Disability	Looked After or Adopted From Care
Bocetti, Mateo	17/05/2018	001771	N1	N1 AM	Yes	Yes	No
Bordet, Petra	20/05/2018	001772	N1	N1 PM	Yes	No	No
Ellis, Mark	15/02/2018	001773	N1	N1 PM	No	Yes	No
Hussaine, Amyra	12/01/2018	001774	N1	N1 A	No		
Jameson, Eve	12/04/2018	001775	N1	N1 PM			
Wilson, Jack	07/03/2018	001778	N1	N1 AM			

1. Click a cell in the **Economic Criteria** column, then select **Yes** or **No** from the drop-down list to indicate if this basis for funding applies to the adjacent two year old pupil.
2. Repeat this process in the **High level SEN or Disability** and **Looked After or Adopted From Care** columns.

*NOTE: A pupil might meet one or more of the criterion. Select **Yes** to each applicable basis for funding.*

3. Repeat this process for all two year old pupil/students.



More Information:

2 Year Old Basis for Funding Report on page 60

Editing Class Types

The type of class (either **Nursery** or **Other**) that each pupil belongs to on census day must be specified. Pupil/Students in your Nursery class should be specified as **Nursery**, with all other pupils specified as **Other**.

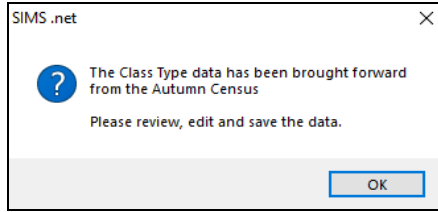
If the class types have been recorded previously via **Tools | Statutory Return Tools | Update Class Type**, the data is displayed in the **Class Type** panel.

4 Class Type							
Name	Date of Birth	Gender	AdNo	YTI	Reg	Nursery	Other
Abbas, Latif	11/11/2016	Male	001820	N2	PM	✓	
Abbott, Jessica	17/02/2014	Female	001663	2	2JB		✓
Abhra, Abjit	20/11/2009	Male	001336	6	6VC		✓
Abhra, Alisha	20/11/2009	Female	001337	6	6VC		✓
Abhra, Shaquib	17/12/2013	Male	001582	2	2GH		✓
Abrams, Paul	15/12/2014	Male	001651	1	ELM		✓

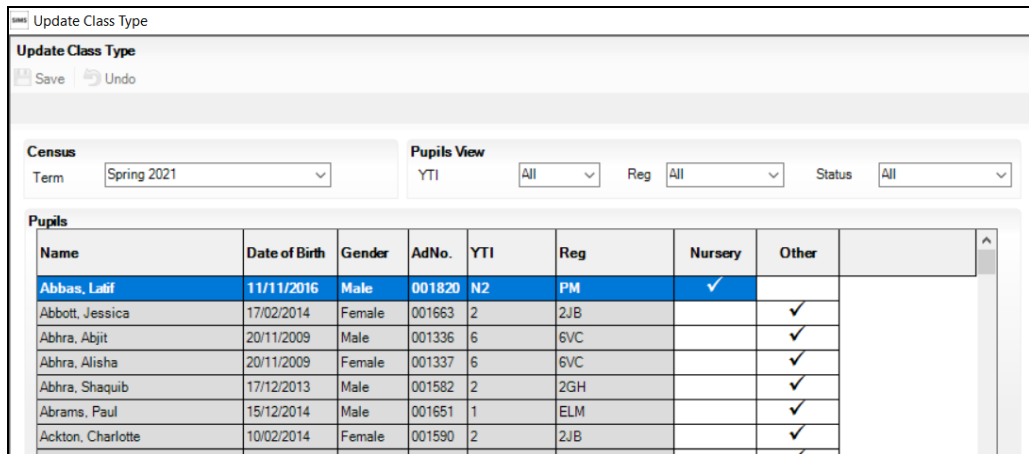
The **Class Type** panel is read-only. However, you can review, edit and save class types by clicking the **Edit** button.

03| Producing the School Census Spring Return

1. Click the **Edit** button. A message informs you that the class type data has been brought forward from the previous census.

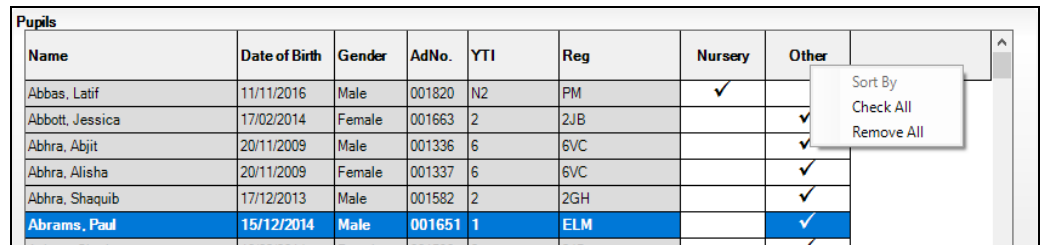


2. Click the **OK** button to display the **Update Class Type** dialog.



NOTE: If new pupils exist the default class type is displayed as blank.

3. To specify the class type for an individual pupil, click the appropriate cell of the **Nursery** or **Other** column to display a tick. Clicking again removes the tick.
4. If all or the majority of pupils need to be assigned the same class type, the following method can be used to quickly populate the **Nursery** and **Other** columns:
 - a. Right-click the **Other** column header, then select **Check All** from the pop-up menu.



- b. In the **Pupils View** panel, select a Nursery year from the year taught in (**YTI**) drop-down list. The selected pupils only are displayed in the **Pupils** panel.

- c. Right-click the **Nursery** column header then select **Check All** from the pop-up menu.

Name	Date of Birth	Gender	AdNo.	YTI	Reg	Nursery	Other
Abbas, Latif	11/11/2016	Male	001820	N2	PM	✓	
Abbott, Jessica	17/02/2014	Female	001663	2	2JB		
Abhra, Abjit	20/11/2009	Male	001336	6	6VC		
Abhra, Alisha	20/11/2009	Female	001337	6	6VC		✓
Abhra, Shaquib	17/12/2013	Male	001582	2	2GH		✓
Abrams, Paul	15/12/2014	Male	001651	1	ELM		✓
Ackton, Charlotte	10/02/2014	Female	001590	2	2JB		✓

- d. Repeat steps *b* and *c* for any additional Nursery year.
- e. To ensure that your selection is correct, select **All** from the Year Taught In (**YTI**) drop-down list, then check the data displayed.
5. Click the **Save** button.
6. If a message is displayed advising you that some pupils have not been assigned a class type, click the **No** button then ensure that a class type is allocated to every pupil before saving again.
- IMPORTANT NOTE:** To prevent validation failures when the School Census file is created, every pupil/student must be assigned a class type.
7. Click the **OK** button to return to the **Census Return Details** page, where the updated class types are displayed in the **Class Type** panel.



Additional Resources:

Preparing for the School Census Spring 2021 Return handbook

Resetting All Class Types

To reset all class types (via the **Update Class Type** page), right-click the **Nursery** (or **Other**) column header, then select **Remove All** from the pop-up list. The **Nursery** (or **Other**) column is cleared of all ticks.

Re-enter the correct class types for all pupils as previously described.

Identifying which Pupils have no Class Type Specified

To ensure that all pupil/students are assigned to a class type (via the **Update Class Type** page), select **No Class Type** from the **Status** drop-down list in the **Pupils View** panel. Any pupil/students without a **Class Type** are displayed in the **Pupils** panel.

Specify a class types for these pupils, as previously described.

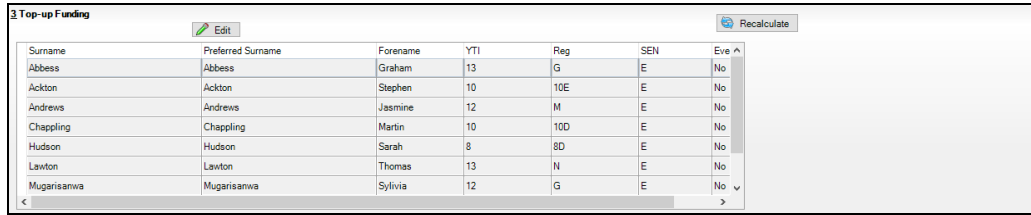
Editing Pupil/Students with Top-Up Funding

Top-up funding is supplied to schools, in most cases by the Local Authority, to meet the additional costs of support for high needs pupil/students.

The **Top-up Funding** panel enables you to record the on-roll pupil/students for whom your school is receiving top-up funding on census day.

03 | Producing the School Census Spring Return

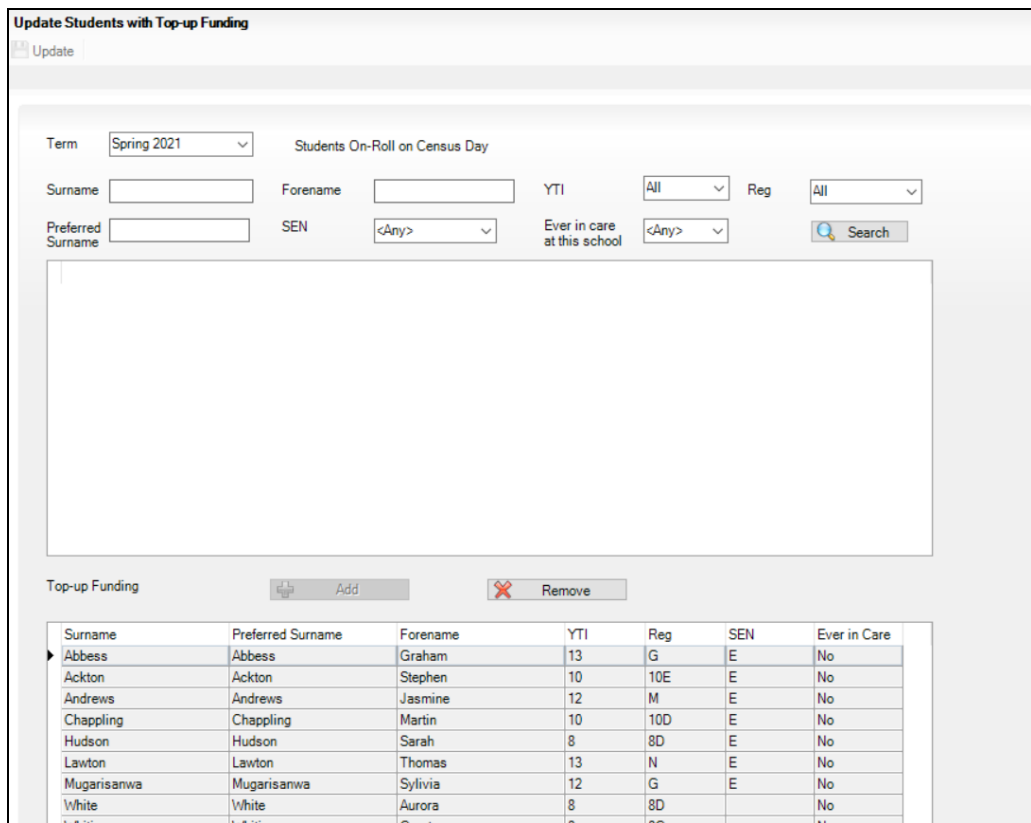
If the pupil/students with top-up funding have been recorded previously via **Tools | Statutory Return Tools | Update Top-Up Funding**, the data is displayed in the **Top-up Funding** panel.



Surname	Preferred Surname	Forename	YTI	Reg	SEN	Ever in Care
Abbens	Abbens	Graham	13	G	E	No
Ackton	Ackton	Stephen	10	10E	E	No
Andrews	Andrews	Jasmine	12	M	E	No
Chappling	Chappling	Martin	10	10D	E	No
Hudson	Hudson	Sarah	8	8D	E	No
Lawton	Lawton	Thomas	13	N	E	No
Mugarisanwa	Mugarisanwa	Sylvia	12	G	E	No

The information displayed in the **Top-up Funding** panel is read-only. Updating top-up funding information, e.g. adding or removing a pupil/student, must be done via the **Edit** button.

1. Click the **Edit** button to display the **Update Pupil (or Student)s with Top-up Funding** dialog. The pupil/students currently recorded as having top-up funding are displayed in the **Top-up Funding** list (located in the bottom half of the page).



Update Students with Top-up Funding

Update

Term: Students On-Roll on Census Day

Surname: Forename: YTI: Reg:

Preferred Surname: SEN: Ever in care at this school:

Top-up Funding

Surname	Preferred Surname	Forename	YTI	Reg	SEN	Ever in Care
▶ Abbens	Abbens	Graham	13	G	E	No
Ackton	Ackton	Stephen	10	10E	E	No
Andrews	Andrews	Jasmine	12	M	E	No
Chappling	Chappling	Martin	10	10D	E	No
Hudson	Hudson	Sarah	8	8D	E	No
Lawton	Lawton	Thomas	13	N	E	No
Mugarisanwa	Mugarisanwa	Sylvia	12	G	E	No
White	White	Aurora	8	8D		No
White	White	Courtney	8	8C		No

2. Use the **Students On-Roll on Census Day** search criteria to locate the additional pupil/students you wish to record as having top-up funding.

TIP: Click the **Search** button to display a list of all pupil/students who have not been defined as having top-up funding. Alternatively, enter all or part of the required search criteria then click the **Search** button.

Term Students On-Roll on Census Day

Surname Forename YTI Reg

Preferred Surname SEN Ever in care at this school

Surname	Preferred Surname	Forename	YTI	Reg	SEN	Ever in Care
Webster	Webster	Mark	8	8E		No
Weddle	Weddle	Kameron	8	8D		No

Top-up Funding

3. Highlight the pupil/student(s) who you want to record as having top-up funding, then click the **Add** button to move the selected pupil/student(s) to the **Top-up Funding** list.

One or more pupil/students can be selected using the **Ctrl+click** or **Shift+click** functionality.

Term Students On-Roll on Census Day

Surname Forename YTI Reg

Preferred Surname SEN Ever in care at this school

Top-up Funding

Surname	Preferred Surname	Forename	YTI	Reg	SEN	Ever in Care
Abbess	Abbess	Graham	13	G	E	No
Ackton	Ackton	Stephen	10	10E	E	No
Andrews	Andrews	Jasmine	12	M	E	No
Chappling	Chappling	Martin	10	10D	E	No
Hudson	Hudson	Sarah	8	8D	E	No
Lawton	Lawton	Thomas	13	N	E	No
Mugarisanwa	Mugarisanwa	Sylvia	12	G	E	No
Webster	Webster	Mark	8	8E		No
Weddle	Weddle	Kameron	8	8D		No
White	White	Aurora	8	8D		No
Whiting	Whiting	Courtney	8	8C		No

4. To remove a pupil/student from the **Top-up Funding** list, highlight the required pupil/student, then click the **Remove** button. The pupil/student's record is moved to the **Students On-Roll on Census Day** list, from where it can be reselected, if required.

03| Producing the School Census Spring Return

5. Click the **Update** button to save the data and arrange the list of pupil/students in **Surname** order.
6. Click the **OK** button located at the bottom right-hand side of the screen to return to the **Census Return Details** page, where the updated information is displayed in the **Top-up Funding** panel.



Additional Resources:

Preparing for the School Census Spring 2021 Return handbook

Editing Pupil/Student Post Looked After Arrangements

The Post Looked After Arrangements routine provides schools with the ability to record whether pupil/students who are on-roll on census day were looked after immediately before adoption or prior to being the subject of a residence or special guardianship order.

If the pupil/students with post looked after arrangements (PLAA) have been recorded previously via **Tools | Statutory Return Tools | Update Student Post Looked After Arrangements**, the data is displayed in the **Post Looked After Arrangements** panel.

1. Click the **Recalculate** button (in the **Post Looked After Arrangements** panel) to ensure that all pupil/students who already have a PLAA status are displayed.

Surname	Preferred Surname	Forename	YTI	Reg	Ever in C.	Post Looked After Arrangements
Jump	Jump	Frederick	10	10B	Yes	Ceased to be looked after through a Child Arrangement Order (CAO)
O'Connor	O'Connor	Marc	9	9A	Yes	Ceased to be looked after through Adoption
Simons	Simons	Christian	8	8C	Yes	Ceased to be looked after through a Residence Order (RO)
Stevens	Stevens	Holly	8	8E	Yes	Ceased to be looked after through Adoption

The information displayed in the **Post Looked After Arrangements** panel is read-only. Updating the information, e.g. editing the PLAA status or adding a pupil/student, must be done via the **Edit** button.

- Click the **Edit** button to display the **Update Pupil (or Student)s Post Looked After Arrangements** page. Any pupil/students currently recorded as having PLAA are displayed in the **Post Looked After Arrangements** list located in the bottom half of the page.

Surname	Preferred Surname	Forename	YTI	Reg	Ever in Care	Post Looked After Arrangements	Evidence Obtained
Jump	Jump	Frederick	10	10B	Yes	Ceased to be looked after through a Child Arrangement Order (CAO)	<input checked="" type="checkbox"/>
O'Connor	O'Connor	Marc	9	5A	Yes	Ceased to be looked after through Adoption	<input checked="" type="checkbox"/>
Simons	Simons	Christian	8	8C	Yes	Ceased to be looked after through a Residence Order (RO)	<input checked="" type="checkbox"/>
Smith	Smith	Alex	11	11E	No	Ceased to be looked after through a Residence Order (RO)	<input type="checkbox"/>
Smith	Smith	Amy	11	11D	No	Ceased to be looked after through Adoption	<input type="checkbox"/>
Smith	Smith	Ana	8	8B	No	Ceased to be looked after through Adoption	<input type="checkbox"/>
Stevens	Stevens	Holly	8	8E	Yes	Ceased to be looked after through Adoption	<input checked="" type="checkbox"/>

- Use the **Students On-Roll on Census Day** search criteria to locate the additional pupil/students you wish to record as having PLAA.

*TIP: Click the **Search** button to display a list of pupil/students who have not been defined as having PLAA. Alternatively, enter all or part of the required search criteria then click the **Search** button.*

Surname	Preferred Surname	Forename	YTI	Reg	Ever in Care
Smiles	Smiles	George	9	9D	No
Smith	Smith	Christian	11	11C	No
Smith	Smith	Daniel	12	L	No
Smith	Smith	Jade	12	K	No
Smith	Smith	Laura	11	11B	No
Smith	Smith	Osias	12	J	No
Smith	Smith	Stephanie	12	H	No
Smith	Smith	Tabitha	9	9E	No
Smith	Smith	Trinity	12	G	No
Smith	Smith	Tristan	12	G	No

- Highlight the pupil/students who you want to record as having PLAA, then click the **Add** button to move the selected pupil/students automatically to the **Post Looked After Arrangements** list.

One or more pupil/students can be selected using the **Ctrl+click** or **Shift+click** functionality.

Surname	Preferred Surname	Forename	YTI	Reg	Ever in Care	Post Looked After Arrangements	Evidence Obtained
Jump	Jump	Frederick	10	10B	Yes	Ceased to be looked after through a Child Arrangement Order (CAO)	<input checked="" type="checkbox"/>
O'Connor	O'Connor	Marc	9	9A	Yes	Ceased to be looked after through Adoption	<input checked="" type="checkbox"/>
Simons	Simons	Christian	8	8C	Yes	Ceased to be looked after through a Residence Order (RO)	<input checked="" type="checkbox"/>
Smith	Smith	Alex	11	11E	No	Ceased to be looked after through a Residence Order (RO)	<input type="checkbox"/>
Smith	Smith	Amy	11	11D	No	Ceased to be looked after through Adoption	<input type="checkbox"/>
Smith	Smith	Aria	8	8B	No	Ceased to be looked after through Adoption	<input type="checkbox"/>
Stevens	Stevens	Holly	8	8E	Yes	Ceased to be looked after through Adoption	<input checked="" type="checkbox"/>

- For each pupil/student added to the **Post Looked After Arrangements** list, select the post looked after arrangement status by clicking in the applicable cell in the **Post Looked After Arrangements** column, then selecting the required status from the drop-down list:
 - **Ceased to be looked after through Adoption**
 - **Ceased to be looked after through a Special Guardianship Order (SGO)**
 - **Ceased to be looked after through a Residence Order (RO)**
 - **Ceased to be looked after through a Child Arrangement Order (CAO).**

NOTE: Ceased to be looked after through a Residence Order (RO) has been replaced by Ceased to be looked after through a Child Arrangement Order (CAO).

You do not need to change any existing residence orders but new post looked after arrangements must be recorded as child arrangement orders.

- Select the **Evidence Obtained** check box if documents have been obtained that provide evidence of the post looked after arrangements.
If you indicate that evidence has been obtained, ensure that the applicable documents are stored securely either outside of SIMS or within the Document Management Server.

NOTE: Evidence Obtained is not collected in the School Census return but should be recorded as proof of DfE/Ofsted compliance.

- To remove a name from the list, highlight it then click the **Remove** button. The record is moved to the **Students On-Roll on Census Day** list, from where it can be reselected, if required.
- Click the **Update** button to save the information and arrange the list of pupil/students in surname order.
If you have indicated that evidence has been obtained, you are reminded to ensure that the necessary documents are stored securely outside of SIMS or within the Document Management Server.
- Click the **OK** button to continue.

- Click the **OK** button (located at the bottom right-hand side of the screen) to return to the **Census Return Details** page, where the updated information is displayed in the **Post Looked After Arrangements** panel.



Additional Resources:

Preparing for the School Census Spring 2021 Return handbook



More Information:

Post Looked After Arrangements Report on page 60

Managing School Dinners Taken on Census Day

Applicable to schools with pupils in Reception, Year 1 and Year 2

All pupils in Reception, Year 1 and Year 2 in English state-funded schools are offered a Universal Infant School Meal, i.e. a hot meal at lunchtime. This applies to Academies, Free Schools and Pupil Referral Units, as well as to schools maintained by the local authority. The School Census Spring 2021 Return collects information about pupils who receive a Universal Infant School Meal (school dinner) on census day.

The **School Dinner Taken** panel displays all pupils in Reception, Year 1 and Year 2 who are on-roll on census day. The options available in the panel enable you to record pupils who have taken a Universal Infant School Meals on census day, so that accurate data can be included in the census.

*NOTES: The **Reference Date** is provided so that your school can report school dinners taken on an alternative date to census day, if required.*

*The pupils listed in the **School Dinner Taken** panel are those who are on-roll on census day. Whereas the data calculated via the **Calculate From Attendance** and the **Calculate From Dinner Money** buttons is based on the reference date.*

03| Producing the School Census Spring Return

If your school uses SIMS Dinner Money or SIMS Attendance, the number of dinners taken on census day can be calculated using the data recorded when using these modules. If either or both of these modules are not in use, the applicable **Calculate From** button(s), as displayed in the following graphic, are not displayed but the information can be recorded manually.

8 School Dinner Taken

Reference Date: 21/01/2021

All pupils including those eligible for FSM should be included below

Group By: [v] []

Calculate From Attendance [] Calculate From Dinner Money []

Surname	Forename	YTI	Reg Group	Enrol Status	School Dinner Taken
Abbott	Jessica	R	ASH	Single Registration	
Abhra	Shaquib	R	ELM	Single Registration	
Ackton	Charlotte	R	PINE	Single Registration	
Adams	Nancy	2	2JB	Single Registration	
Adams	Sadie	1	ELM	Single Registration	
Alala	Candis	2	2GH	Single Registration	
Alala	Michael	R	PINE	Single Registration	
Alyona	Tatyana	1	PINE	Single Registration	
Andrews	Richard	1	ASH	Single Registration	
Barden	Olivia	2	2JB	Single Registration	
Bartram	Piers	1	ASH	Single Registration	
Bateman	Vincent	2	2GH	Single Registration	
Bennet	Eloise	1	PINE	Single Registration	
Benson	Chantal	R	ELM	Single Registration	

Total Taken: 0 Total Not Taken: 178

Tick All [x] Reset [x]

1	By default, the Reference Date is set to 21/01/2021 (census day). If, due to exceptional circumstance, e.g. flooding, pupils were unable to take a school dinner on census day, the reference date can be changed to a date that reflects the normal situation.
2	Click the required column header to sort the data.
3	The Calculate From Attendance button is displayed only if SIMS Attendance is in use.
4	The Calculate from Dinner Money button is displayed only if SIMS Dinner Money is in use.
5	When the Reset button is clicked all existing ticks are removed from the School Dinner Taken column enabling you to start the process again.
6	The Total Taken and Total Not Taken provide an indication of whether the number of school dinners taken is correct or whether edits are required.

After the return has been created and validated, the School Dinner Taken detail report can be run to assist with the checking of results.



More Information:

School Dinner Taken Report on page 58

Using Dinner Money to Calculate School Dinners Taken on Census Day

If SIMS Dinner Money is in use, the Dinner Money data recorded for census day can be used to calculate the number of school dinners taken on census day.

Many users of SIMS Dinner Money also use SIMS Attendance. If this is the case the **Calculate From Attendance** button is also displayed.

However, it is recommended that the Calculate From Dinner Money routine is used in the first instance. This is because the Calculate From Attendance routine looks at all pupils with a present or late attendance mark on census day morning. These pupils could be taking any sort of meal on census day, e.g. going home for lunch, pack lunch brought from home, as well as meals provided by the school. The School Census return is only interested in school meals provided by the school.

SIMS Dinner Money takes into account these different meal types and populates the **School Dinner Taken** column with ticks where meals provided by the school only have been taken.

Surname	Forename	YTI	Reg Group	Enrol Status	School Dinner Taken
Abbott	Jessica	2	2JB	Single Registration	
Abhra	Shaqib	2	2GH	Single Registration	
Abrams	Paul	1	ELM	Single Registration	
Ackton	Charlotte	2	2JB	Single Registration	✓
Aditya	Zayan	R	OAK	Single Registration	✓
Ainsley	Charlotte	1	OAK	Single Registration	✓
Alala	Michael	2	2GH	Single Registration	
Alberts	Courtney	1	PINE	Single Registration	✓
Andrews	Ching	1	ELM	Single Registration	✓
Andrews	Izabel	R	ASH	Single Registration	✓
Armitage	Elise	R	PINE	Single Registration	✓
Atkins	Austin	R	PINE	Single Registration	
Atkins	Portia	1	ASH	Single Registration	
Barnes	Isaac	1	OAK	Single Registration	✓

Total Taken: 72 Total Not Taken: 106

1. Click the **Calculate From Dinner Money** button.

WARNING: Clicking the **Calculate From Dinner Money** button overwrites all existing data in the **School Dinner Taken** panel.

If SIMS detects missing information, the following message is displayed:

Dinner Money information is incomplete. Please ensure that meals are recorded in Dinner Money.

2. Click the **Cancel** button to return to SIMS where the missing information can be entered or the **OK** button to continue.

A tick is entered against each pupil who is receiving any type of meal provided by the school on census day. These meals have a meal type category of **School Provided**, with a description such as hot school meal or school sandwich.

3. Edit the information by clicking the required row, in the **School Dinner Taken** column, to toggle between a tick and blank (no meal taken), as required.

Using Attendance to Calculate School Dinners Taken on Census Day

The School Census Return only requires information about school meals provided by the school on census day. However, if SIMS Attendance is in use, the attendance data recorded for census day morning can be used to calculate all pupils who are present and are likely to be taking a school dinner.

The information calculated from attendance can be edited to so that school meals provided by the school only are collected in the return.

1. Click the **Calculate From Attendance** button.

WARNING: Clicking the **Calculate From Attendance** button overwrites existing data in the **School Dinner Taken** panel.

If missing marks exist, a message is displayed:

Please ensure that registers have been taken. Missing marks have been interpreted as absent and no dinner taken.

2. Click the **Cancel** button to return to SIMS where missing marks can be entered or the **OK** button to continue.

A tick is entered against each pupil who is marked as present on census day morning (i.e. AM session). It is possible that some of these pupils are not taking meals provided by the school, e.g. they go home for dinner or bring a packed lunch from home. Meals provided by the school only are required for the return.

Use the **Group By** functionality to group pupils by **Year Taught In, Reg Group** or **Enrolment Status**, enabling school dinners taken information to be updated from class lists, etc.

3. Edit the information by clicking the required row, in the **School Dinner Taken** column, to toggle between a tick and blank (no meal taken), as required.

Using Manual Entry to Record School Dinners Taken on Census Day

If your school is not using SIMS Dinner Money or SIMS Attendance the number of school dinners taken on census day (i.e. meals provided by the school) can be entered manually.

1. Click the **Tick All** button to populate the **School Dinner Taken** column. All pupils are ticked indicating that they received a school dinner on census day.

2. Edit individual records by clicking the applicable **School Dinner Taken** cell to toggle between a tick and blank (no meal taken).

Reference Date: 21/01/2021 All pupils including those eligible for FSM should be included below

Calculate From Attendance Calculate From Dinner Money

Surname	Forename	YTI	Reg Group	Enrol Status	School Dinner Taken
Abbott	Jessica	2	2JB	Single Registration	
Abhra	Shaqub	2	2GH	Single Registration	
Abrams	Paul	1	ELM	Single Registration	
Ackton	Charlotte	2	2JB	Single Registration	✓
Aditya	Zayan	R	OAK	Single Registration	✓
Ainsley	Charlotte	1	OAK	Single Registration	✓
Alala	Michael	2	2GH	Single Registration	
Alberts	Courtney	1	PINE	Single Registration	✓
Andrews	Ching	1	ELM	Single Registration	✓
Andrews	Izabel	R	ASH	Single Registration	✓
Armitage	Elise	R	PINE	Single Registration	✓
Atkins	Austin	R	PINE	Single Registration	
Atkins	Portia	1	ASH	Single Registration	
Barnes	Isaac	1	OAK	Single Registration	✓

Total Taken: 72 Total Not Taken: 106

The **Total Taken** and **Total Not Taken** (located at the bottom of the panel) provide an indication of whether the number of school dinners taken is correct or whether further edits are required.

3. After the return has been created and validated, run the School Dinner Taken detail report and then check the report contents.
4. Continue editing until school dinner taken details are correct.

WARNING: Clicking the **Reset** button removes all existing ticks from the **School Dinner Taken** column.

Editing Class Information

When the School Census is generated, the class information displayed is a 'snapshot' of SIMS data as of the selected period on census day. The selected period is based on the last digit of your DfE establishment number (please see *Specifying the Selected Period on Census Day* on page 13).

NOTE: If the school is closed on census day, the information displayed is still based on classes as at census day.

If the **Include Alternative Curriculum** check box is selected (in the **Selected Period on Census Day** panel), Alternative Curriculum periods are included in the list of class names displayed in the **Classes** panel.

For All-Through school with a timetable, the **Classes** panel consists of two sections, the **Reg Classes** (registration classes) panel and the **TT Classes** (timetabled classes) panel.



More Information:

Class Report on page 60

Editing Registration Classes

Schools with infant classes, i.e. reception and/or Key Stage 1 classes, should ensure that the selected period is one in which their infant classes are engaged in an academic activity rather than that of excepted activities, e.g. games, music, watching television, etc.

An indication as to the **Number of classes with unexplained excess** is displayed at the top of the panel (please see *Recording Reasons for Class Size Exceptions* on page 42).

The registration groups that have been set up in your pastoral structure are displayed in the read-only **Class Name** column. The **Total** numbers of pupil/students and staff are calculated automatically and displayed at the bottom of the panel.

Check and, if necessary, edit the information displayed.

The following graphic is an example of the panel for an All-Through school with a timetable.

10 Classes									
Reg Classes									
Number of classes with unexplained excess									
Class Name	Pupils(On Roll)	Pupils(Guest)	Teachers	PPA Teachers	Support Staff	YTI	Type	KeyStage	Activity
A1	5	0	0	0	0	0	Year 1	Other	Key Stage 1
A2	6	0	0	0	0	0	Year 2	Other	Key Stage 1
A3	6	0	0	(n/a)	0	0	Year 3	Other	Key Stage 2
A4	6	0	0	(n/a)	0	0	Year 4	Other	Key Stage 2
AE2	25	0	0	(n/a)	0	0	Year E2	Other	Foundation
AN1	5	0	0	(n/a)	0	0	Year N1	Other	Foundation
AN2	5	0	0	(n/a)	0	0	Year N2	Other	Foundation
AR	6	0	0	0	0	0	Year R	Other	Foundation
Total	64	0	0	0	0	0			

TT Classes									
Number of classes with unexplained excess									
Class Name	Students(On Roll)	Students(Guest)	Teachers	PPA Teachers	Support Staff	YTI	Type	KeyStage	Activity
10x/En1	27	0	1	(n/a)	0	0	Year 10	(n/a)	(n/a)
10x/En2	27	0	1	(n/a)	0	0	Year 10	(n/a)	(n/a)
10x/En3	26	0	1	(n/a)	0	0	Year 10	(n/a)	(n/a)
10y/Pe1	27	0	1	(n/a)	0	0	Year 10	(n/a)	(n/a)
10y/Pe2	26	0	1	(n/a)	0	0	Year 10	(n/a)	(n/a)
10y/Pe3	26	0	1	(n/a)	0	0	Year 10	(n/a)	(n/a)
10y/Pe4	20	0	1	(n/a)	0	0	Year 10	(n/a)	(n/a)
Total	264	0	16	0	1				

The following graphic is an example of the panel for an All-Through school without a timetable.

9 Classes									
Number of classes with unexplained excess									
Class Name	Pupils(On Roll)	Pupils(Guest)	Teachers	PPA Teachers	Support Staff	YTI	Type	KeyStage	Activity
10A	53	0	0	(n/a)	0	0	Year 10	(n/a)	(n/a)
11A	54	0	0	(n/a)	0	0	Year 11	(n/a)	(n/a)
12A	53	0	0	(n/a)	0	0	Year 12	(n/a)	(n/a)
13A	53	0	0	(n/a)	0	0	Year 13	(n/a)	(n/a)
1A	53	0	1	0	1	1	Year 1	Other	Key Sta...
2A	53	0	1	0	1	1	Year 2	Other	Key Sta...
Total	739	1	23	2	12				

- **Pupils (On Roll)**

The number of pupil/students in the registration class at the selected period on census day is displayed. The entries in this column can be edited if required. Ensure that:

- any pupil/students temporarily absent on the census day are included.
- any part-time pupil/students not scheduled to be in school at the selected period are excluded. These pupil/students should be counted in the **Pupil Reconciliation** panel instead.

- **Pupils (Guest)**

This column displays any guest pupil/students who are normally in the class at the selected period. Ensure that any guest pupil/students have an **Enrolment Status** of **Guest pupil** in the **Pupil Details** panel (**Focus | Pupil (or Student) | Pupil (or Student) Details**).

- **Teachers**

Include all qualified and unqualified teachers taking the class at the selected period.

Exclude teachers who are:

- wholly or mainly providing support to individual pupil/students.
- on Planning, Preparation and Assessment (PPA) time.

- **PPA Teachers**

This column enables you to record the number of teachers on planning, preparation and assessment (PPA) time at the selected time on census day. The information is required for infant classes (i.e. Year Taught In R or Key Stage 1) only.

- **Support Staff**

Include teaching assistants, special needs support staff, support staff for minority ethnic pupil/students and other education support staff in the class at the selected period.

Exclude non-teaching staff wholly or mainly providing support to individual pupil/students.

- **Year Taught In (YTI)**

This column shows the curriculum year group of each class displayed. To edit the year group, click in the cell and select from the drop-down list.

Select **Mixed Year** if a class contains pupils from more than one National Curriculum year.

NOTE: This does not include classes containing any pupil/students who have been held back, or advanced a year and are of a different chronological age to the rest of the class.

- **Type**

This column displays the class type. To edit the class type, click in the cell then select either **Other** or **Nursery** (as appropriate) from the drop-down list.

- **Key Stage**

This column displays the key stage of each registration class. This can be amended by clicking in the cell and selecting the required Key Stage from the drop-down list.

*NOTE: A **Mixed Key Stage** class is a class containing pupils from different key stages, e.g. Year 2 (Key Stage 1) and Year 3 (Key Stage 2), and not a class containing a child of a different age because they have been held back or advanced a year.*

- **Activity**

This column provides the ability to select the activity that the registration class was engaged in at the selected period. This is achieved by clicking in the required cell then selecting the applicable activity from the drop-down list. **Other** should not be selected unless none of the activities listed are appropriate.

Recording Reasons for Class Size Exceptions

Schools are required to provide information about exceptional class sizes, i.e. a teacher/pupil ratio of more than 1 teacher to 30 pupils (on-roll pupils plus guest pupils) in Year Taught In R or Key Stage 1.

A reason for the exception and the number of pupils to which the exception reason applies must be recorded.

The name of all classes that require you to record the reason for the class size exception are displayed in bold text, with a yellow background.

1. Highlight the class record for which exception reasons need to be recorded.

Class Name	Pupils(On Roll)	Pupils(Guest)	Teachers	PPA Teachers	Support Staff	YTI	Type	KeyStage	Activity
2GH	31	0	1	0	0	Year 2	Other	Key Stage 1	
2JB	27	0	1	0	0	Year 2	Other	Key Stage 1	
3CB	30	0	1	(n/a)	0	Year 3	Other	Key Stage 2	
3TO	30	0	1	(n/a)	0	Year 3	Other	Key Stage 2	
4ES	29	0	1	(n/a)	0	Year 4	Other	Key Stage 2	
4SL	29	0	1	(n/a)	0	Year 4	Other	Key Stage 2	
Total	443	0	15	0	1				

The **Class Size Exceptions** button is activated only when a record that displays an exceptional number of pupils is highlighted.

2. Click the **Class Size Exceptions** button to display the **Class Size Exceptions** dialog.

Class Size Exceptions Details

Class Name: 1A

Total Pupils in Class: 33

Excess Pupils: 3

Total Exceptions Entered: 0

Unexplained Excess: 3

Reason Code	No of Pupils
A	0
B	0
C	0
D	0
E	0
F	0
G	0
H	0

Total: 0

Reason Code Description: The number of children admitted outside the normal admissions round with an education, health and care plan specifying a school

Buttons: Save, Cancel

A read-only summary of the current information is displayed on the left-hand side of the dialog.

3. Enter the **No of Pupils** adjacent to each applicable **Reason Code**.

***TIP:** To update the **Total** and the summary information (located on the left-hand side) automatically, click in the white space below the **Reason Code** grid.*

4. Click the **Save** button to retain the information and return to the **Classes** panel.

The **Number of classes with unexplained excess** is updated to reflect the number of exceptions for which a reason must still be entered.

Editing Timetabled Classes

The timetabled classes previously set up in Nova/Academic Management are displayed in the read-only **Class Name** column. The **Total** numbers of pupil/students and staff are calculated automatically and displayed at the bottom of the panel.

TT Classes Number of classes with unexplained excess: 0

Class Name	Students(On Roll)	Students(Guest)	Teachers	PPA Teachers	Support Staff	YTI	Type	KeyStage
10x/En1	27	0	1	(n/a)	0	Year 10	(n/a)	(n/a)
10x/En2	27	0	1	(n/a)	0	Year 10	(n/a)	(n/a)
10x/En3	26	0	1	(n/a)	0	Year 10	(n/a)	(n/a)
10y/Pe1	27	0	1	(n/a)	0	Year 10	(n/a)	(n/a)
10y/Pe2	26	0	1	(n/a)	0	Year 10	(n/a)	(n/a)
10y/Pe3	26	0	1	(n/a)	0	Year 10	(n/a)	(n/a)
10y/Pe4	20	0	1	(n/a)	0	Year 10	(n/a)	(n/a)
Total	264	0	16	0	1			

Buttons: Recalculate, New, Delete, Class Size Exceptions

Check and, if necessary, edit the following information.

- **Students (On Roll)**
The number of pupil/students in the timetabled class at the selected period is displayed. The entries in this column can be edited if required. Ensure that:
 - any pupil/students temporarily absent on the census day are included.
 - any part-time pupil/students not scheduled to be in school at the selected period are excluded. These pupil/students should be counted in the **Student Reconciliation** panel instead (please see *Editing Student Reconciliation* on page 45).
- **Students (Guest)**
This column displays any guest pupil/students who are normally in the timetabled class at the selected period. Ensure that any guest pupil/students have an **Enrolment Status** of **Guest student** in the **Student Details** panel (**Focus | Students | Student Details**).
- **Teachers**
Include all qualified and unqualified teachers taking the timetabled class at the selected period.
Exclude teachers who are:
 - wholly or mainly providing support to individual pupil/students.
 - on Planning, Preparation and Assessment (PPA) time.
- **Support Staff**
Include teaching assistants, special needs support staff, support staff for minority ethnic pupil/students and other education support staff in the timetabled class at the selected period.
Exclude non-teaching staff wholly or mainly providing support to individual pupil/students.
- **Year Taught In**
This column shows the curriculum year group of each class displayed. To edit the year group, click in the cell and select from the drop-down list.
Select **Mixed Year** if a timetabled class contains pupil/students from more than one National Curriculum year.

NOTE: This does not include classes containing any pupil/students who have been held back, or advanced a year and are of a different chronological age to the rest of the class.

PPA Teachers, Type, Key Stage and Activity (applicable to schools that have timetabled classes for Years Taught In under 7)

These columns are displayed/active only if your school has timetabled classes for Years Taught In under 7. If applicable, enter the required values.

Recalculating the Classes Information

The data in the **Classes** panel can be replaced with the original data from the database by clicking the appropriate **Recalculate** button.

IMPORTANT NOTE: Clicking the **Recalculate** button overwrites any edited data with the original data stored in SIMS. Do not use the **Recalculate** button if you wish to keep any changes you have made.

Adding Classes

It might be necessary to add an additional class if, for example, some pupil/students are receiving additional teaching support. This is achieved by clicking the **New** button then entering the applicable class information in the additional row, which is displayed at the bottom of the table.

NOTE: Remember to reduce the number of pupil/students in the main class.

Ensure that you click the **Save** button to save the data and refresh the display.

Deleting Classes

In some circumstances, classes might need to be deleted, e.g. if they do not normally take place at the selected period. This is achieved by highlighting the class then clicking the **Delete** button.

IMPORTANT NOTE: If you delete a class that contains pupil/students, you must recalculate again to ensure that pupil/student numbers are correct.

Editing Student Reconciliation

The **Student Reconciliation** panel is used to reconcile the various categories of pupil/students with the numbers in the **Classes** panel. The number of on-roll pupil/students who are not in class at the selected period, because they are attending another school, part-time, etc. should be entered in the appropriate fields.

8 Student Reconciliation			
On roll students in classes	<input type="text" value="904"/>		Total students <input type="text" value="904"/>
Part-time students not at school	<input type="text" value="0"/>	Students on work experience <input type="text" value="0"/>	Must agree with
Private study students	<input type="text" value="0"/>	Students at FE colleges <input type="text" value="0"/>	Students on roll <input type="text" value="937"/>
Students at another school	<input type="text" value="0"/>		

For example:

In the previous example there are 937 **Students On Roll** but only 904 **On Roll students in classes**. The difference must be accounted for. This could be the number of pupil/students who are attending another school at the selected period. In which case, 33 should be entered in the **Students at another school** field.

1. If applicable, enter the number of **Part-time students not at school**, the number of **Private study students** and the number of **Students at another school**.
2. If applicable, enter the number of **Students on work experience** and the number of **Students at FE colleges**.
3. Check the values in the **Total students** and **Students On Roll** fields. The two values must be the same.

The value in the **Total students** field is calculated automatically and equals the sum of the following:

- **On Roll Students in classes**
 - **Part-time students not at school**
 - **Private study students**
 - **Students at another school**
 - **Students on work experience**
 - **Students at FE colleges.**
4. Amend the values in the editable fields, if necessary.

Entering Attendance Information

Termly attendance data (including attendance codes and the number of sessions missed) should be provided for non-boarder pupil/students and leavers aged four to 15 inclusive on 31/08/2020, who were on-roll for at least one session during the collection period from the start of the Autumn term to 31/12/2020.

Initially the **Attendance** panel is blank. However, after clicking the **Calculate All Details** button (located in the **School Information** panel) the display changes.

IMPORTANT NOTE: Clicking the **Calculate All Details** button overwrites any edited data, in every panel, with the original data stored in SIMS. Do not use this button if you wish to keep any changes you have made.

The information displayed in the **Attendance** panel (after the **Calculate All Details** button is clicked) is dependent on which of the following is applicable:

- SIMS Attendance/Lesson Monitor is in use, the attendance codes being used are DfE compliant and there are either:
 - no missing marks
 - or
 - missing marks.
- SIMS Attendance/Lesson Monitor is in use and the attendance codes being used are DfE non-compliant.
- SIMS Attendance/Lesson Monitor is not in use.



More Information:

Attendance Report on page 57

SIMS Attendance/Lesson Monitor Users

If SIMS Attendance/Lesson Monitor is in use, ensure that all missing marks and unexplained absences for the previous term have been dealt with before commencing the return.

TIP: After the Create and Validate process is run, the Attendance detail report can be used to assist with the checking of attendance data. Select **Attendance Report** from the **Detail Report** drop-down list.

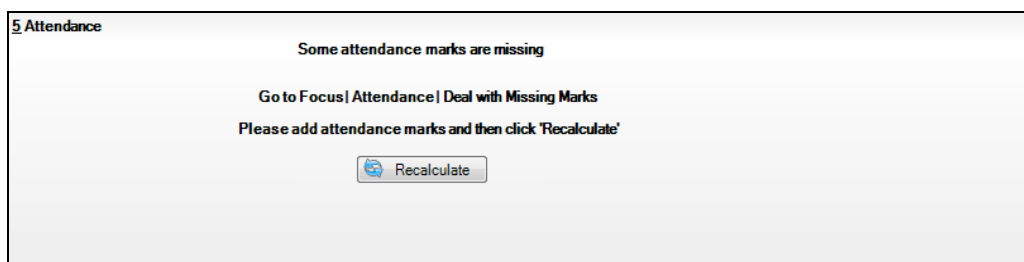
Are your Attendance Codes DfE Compliant?

If Attendance/Lesson Monitor is in use and your school is using DfE compliant attendance codes, attendance data is entered directly into the return, providing that there are no missing marks.

If all attendance marks have been entered in Attendance/Lesson Monitor, the following message is displayed in the **Attendance** panel, informing you that your attendance codes are DfE compliant but will be rechecked at the Create and Validate stage.



However, if any missing attendance marks are detected, the following message is displayed in the **Attendance** panel, requesting that you add the missing attendance marks.



1. Use the Deal with Missing Marks routine (**Focus | Attendance (or Lesson Monitor) | Deal with Missing Marks**) to locate the missing marks and enter appropriate attendance codes.
2. Return to the **Census Return Details** page and click the **Check missing marks** button in the **Attendance** panel to ensure that all missing marks have been dealt with.

NOTE: The Create and Validate process can still be run even if some attendance marks are missing. You will be asked if you wish to continue to create the return or cancel the Create and Validate process.

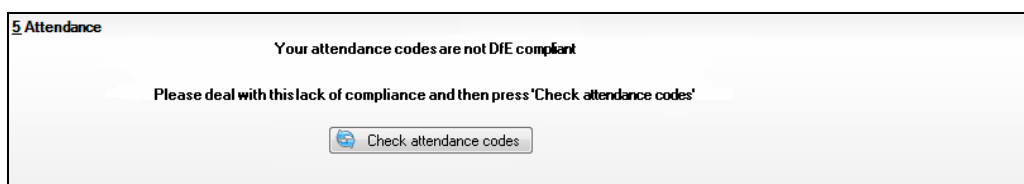


More Information:

Producing Detail Reports on page 56

Are your Attendance Codes DfE Non-Compliant?

If Attendance/Lesson Monitor is in use but one or more invalid attendance codes have been detected, a message is displayed in the **Attendance** panel to inform you that your attendance codes are not DfE compliant.



03| Producing the School Census Spring Return

1. Non-compliant codes must be dealt with. Please contact your Local Support Unit for assistance.
2. Click the **Check attendance codes** button to check that DfE attendance codes are now in use.

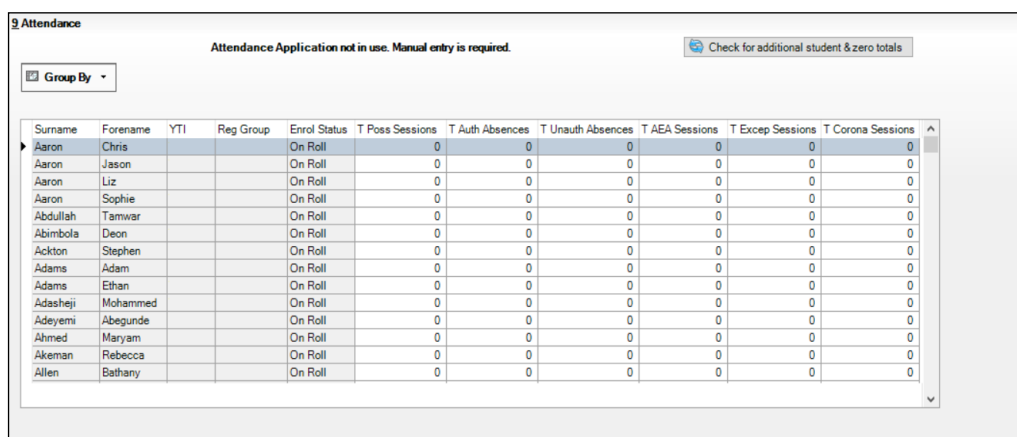
If the attendance codes are now DfE compliant, a message informs you that the codes will be rechecked at the **Create & Validate** stage.

3. Click the **OK** button to continue.

SIMS Attendance/Lesson Monitor Not in Use

If Attendance/Lesson Monitor is not in use, the following data must be entered manually:

- Termly Possible Sessions (**T Poss Sessions**)
- Termly Sessions Missed due to Authorised Absence (**T Auth Absences**)
- Termly Sessions Missed due to Unauthorised Absence (**T Unauth Absences**)
- Total sessions attending approved educational activity (**T AEA Sessions**)
- Total sessions unable to attend due to exceptional circumstances (**T Excep Sessions**)
- Total number of sessions unable to attend due to Coronavirus (**T Corona Sessions**).



Attendance

Attendance Application not in use. Manual entry is required. Check for additional student & zero totals

Group By

Surname	Forename	YTI	Reg Group	Enrol Status	T Poss Sessions	T Auth Absences	T Unauth Absences	T AEA Sessions	T Excep Sessions	T Corona Sessions
Aaron	Chris			On Roll	0	0	0	0	0	0
Aaron	Jason			On Roll	0	0	0	0	0	0
Aaron	Liz			On Roll	0	0	0	0	0	0
Aaron	Sophie			On Roll	0	0	0	0	0	0
Abdullah	Tamwar			On Roll	0	0	0	0	0	0
Abimbola	Deon			On Roll	0	0	0	0	0	0
Ackton	Stephen			On Roll	0	0	0	0	0	0
Adams	Adam			On Roll	0	0	0	0	0	0
Adams	Ethan			On Roll	0	0	0	0	0	0
Adasheji	Mohammed			On Roll	0	0	0	0	0	0
Adeyemi	Abegunde			On Roll	0	0	0	0	0	0
Ahmed	Maryam			On Roll	0	0	0	0	0	0
Akerman	Rebecca			On Roll	0	0	0	0	0	0
Allen	Bathany			On Roll	0	0	0	0	0	0

1. To filter the display of pupil/students in the **Attendance** panel, select **Year Group**, **Registration Group** or **Enrolment Status** from the **Group By** drop-down list.
Alternatively, select **Group by None** to display a list of all pupil/students.
2. To sort the displayed data by surname, forename, year group, registration group or enrolment status, click the appropriate column header.
3. For each pupil/student, enter the correct attendance numbers in the appropriate columns.
4. To clear the attendance information and check for additional pupil/students, click the **Check for additional students & zero totals** button.

WARNING: If the **Check for additional students & zero totals** button is clicked, any attendance data entered manually is lost.

Entering General Information

The **General** panel deals with the number of pupil/students who receive Free School Meals on census day.

12 General	
Number of free school meals taken on census day	<input type="text" value="0"/> FSM taken excludes the infant pupil universal entitlement (except for pupils in R.1.2 who are eligible for FSM)

Enter the **Number of free school meals taken on census day** by pupil/students, in any year, who are eligible for Free School Meals.

- Pupil/students should be included only if they meet the Free School Meals eligibility criteria (i.e. in respect to family income).
- If your school has pupil/students of a young age, do not include pupil/students taking school meals in Reception, Year 1 and Year 2, if they are not eligible for Free School Meals in respect to family income, e.g. they are receiving a Universal Infant School Meal only.



More Information:

General Report on page 61

Entering Infant Admissions Appeals Totals

Applicable to Primary and All-Through schools. Schools that were Academies, Voluntary Aided schools or Foundation schools at the time that the appeals were lodged, should also complete this panel.

The **Infant Admissions Appeals** panel deals with appeals lodged before 01/09/2020 against refusals to admit a child for a place at your school at the start of the 2020/2021 academic year.

All fields in this panel must be populated manually.

13 Infant Admissions Appeals	
Foundation Schools/Voluntary Aided Schools/Academies must complete this section. (this does not include AP Academies, AP Free Schools, Academy Special Schools)	Independent Admissions Committee
Lodged <input type="text" value="0"/>	Heard <input type="text" value="0"/>
Withdrawn <input type="text" value="0"/>	Upheld <input type="text" value="0"/>
	Rejected <input type="text" value="0"/>

1. Enter the total number of admissions appeals that have been **Lodged** and the total that have been **Withdrawn** before 01/09/2020 against a refusal to admit a child to the school for a place at the start of the 2020/2021 academic year.

Information about appeals lodged on or after 01/09/2020 is not required. Enter information related to entry to the school at the start of the academic year only.

2. Enter the total number of infant admissions appeals **Heard**, **Upheld** and **Rejected** by the **Independent Admission Committee**.

Entering Primary Admissions Appeals Totals

Applicable to Primary, Middle deemed Primary and All-Through schools. Schools that were Academies, Voluntary Aided schools or Foundation schools at the time that the appeals were lodged, should also complete this panel.

The **Primary Admissions Appeals** panel deals with appeals lodged before 01/09/2020 against refusals to admit a pupil/student for a place at your school at the start of the 2020/2021 academic year.

NOTE: The appeals records in this panel must include all infant admissions appeals, if applicable to your school.

All fields in this panel must be populated manually.

14 Primary Admissions Appeals		Independent Admissions Committee	
<small>Foundation Schools/Voluntary Aided Schools/Academies must complete this section (this does not include AP Academies, AP Free Schools, Academy Special Schools)</small>		Heard	<input type="text" value="0"/>
Lodged	<input type="text" value="0"/>	Upheld	<input type="text" value="0"/>
Withdrawn	<input type="text" value="0"/>	Rejected	<input type="text" value="0"/>

1. Enter the total number of admissions appeals (including infant admission appeals) that have been **Lodged** and the total that have been **Withdrawn** before 01/09/2020 against a refusal to admit a child to the school for a place at the start of the 2020/2021 academic year.

Information about appeals lodged on or after 01/09/2020 is not required. Enter information related to entry to the school at the start of the academic year only.

2. Enter the total number of admission appeals (including infant admissions appeals) **Heard**, **Upheld** and **Rejected** by the **Independent Admission Committee**.

If there are infants at your school, ensure that the **Infant Admission Appeals** panel is also completed (please see *Entering Infant Admissions Appeals Totals* on page 49).

Entering Secondary Admissions Appeals Totals

Applicable to Secondary, Middle deemed Secondary and All-Through schools. Schools that were Academies, Voluntary Aided schools or Foundation schools at the time that the appeals were lodged, should also complete this panel.

The **Secondary Admissions Appeals** panel deals with appeals lodged before 01/09/2020 against refusals to admit a pupil/student for a place at your school at the start of the 2020/2021 academic year.

All fields in this panel are editable and must be populated manually.

11 Secondary Admissions Appeals		Independent Admissions Committee	
<small>Foundation Schools/Voluntary Aided Schools/Academies must complete this section (this does not include AP Academies, AP Free Schools, Academy Special Schools)</small>		Heard	<input type="text" value="0"/>
Lodged	<input type="text" value="0"/>	Upheld	<input type="text" value="0"/>
Withdrawn	<input type="text" value="0"/>	Rejected	<input type="text" value="0"/>

1. Enter the total number of admissions appeals that have been **Lodged** and the total that have been **Withdrawn** before 01/09/2020 against a refusal to admit a child to the school for a place at the start of the 2020/2021 academic year.

Information about appeals lodged on or after 01/09/2020 is not required. Enter information related to entry to the school at the start of the academic year only.

2. Enter the total number of admissions appeals **Heard, Upheld** and **Rejected** by the **Independent Admission Committee**.

When this panel is complete and you are satisfied that all the details on the **Census Return Details** page are correct, the census return file can be created and validated (please see *Creating and Validating the School Census Return* on page 53).

04 | Completing the School Census Spring Return

Creating and Validating the School Census Return	53
Producing Detail Reports	56
Printing a Report from your Web Browser	63
Transferring Report Data to a Spreadsheet.....	63
Deleting Temporary Web Browser Files	63
Producing the Summary Report	64
Editing an Unauthorised Return	64
Authorising the Return	65
Submitting the Return	67
Retrieving Authorised Census Return Files	67
Copying a Return	68
Deleting an Unauthorised Return.....	69

Creating and Validating the School Census Return

A return must be created, validated and authorised before it can be sent to your Local Authority or uploaded to the DfE COLLECT data collection website (as applicable to your school).

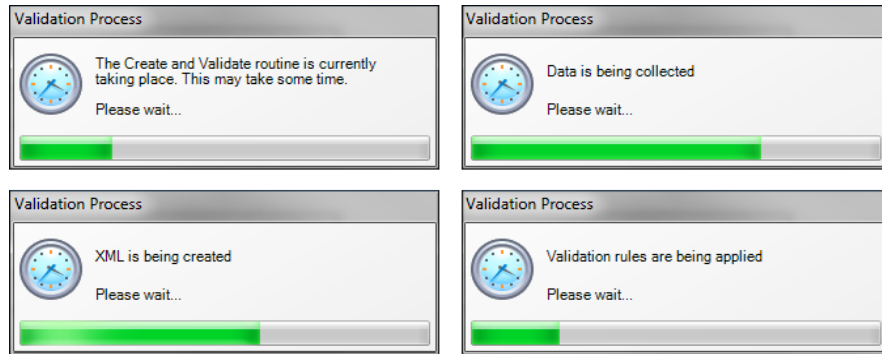
Validating the return creates an unauthorised return file, which is then run against a set of DfE rules. When the validation is complete, a list of errors and queries is displayed.

An error is caused by either missing or inaccurate data, whilst a query highlights data that is unusual or not as expected, e.g. there are no pupil/students showing as having special educational needs.

1. Select **Routines | Statutory Returns | School Census** to display the **Census Return** browser.
2. Click the **Search** button to display a list of returns.
3. Double-click the required return to display the **Census Return Details** page.
4. Click the **Create & Validate** button to start the process. There may be a short delay, depending on the number of pupil/students at your school.

04 | Completing the School Census Spring Return

A progress bar is displayed, indicating that the Create and Validate process is being performed.



During the Create and Validate process, SIMS examines the data for any anomalies applicable to your school phase, e.g. no top-up funding information, missing attendance marks, permanent exclusions without a final governor review result, etc.

If an anomaly is found, a message is displayed, which provides the opportunity to continue to create and validate or cancel the process, so that details can be checked. Detail reports are available to assist you when checking details.

When the validation process is complete, the **Validation Errors Summary** panel is displayed at the bottom of the screen.



Additional Resources:

Dealing with Missing Marks section in the *Edit Marks Routine* chapter of the *Managing Pupil/Student Attendance* handbook or the *Monitoring Session and Lesson Attendance* handbook

Recording Exclusion chapter of the *Managing Pupil/Students* handbook

Resolving Validation Errors and Checking Queries

After creating the return file and validating the data, any errors and queries found are listed in the **Validation Errors Summary** panel.

Type	Sequence	Message	Location	Solution
F	1500	UPN missing	Name: Abraham, Janel Date of Birth: 2005-05-19, Female/UPN:	# Go to Focus Student Student Details and add or issue a UPN.
F	1500	UPN missing	Name: Reid, Rosiel Date of Birth: 2009-03-07, Female/UPN:	# Go to Focus Student Student Details and add or issue a UPN.
F	1940	Pupils aged 5 and over Language missing or invalid.	Name: Henderson, Jacki Date of Birth: 2010-05-07, Male/UPN: K8232999140	# Go to Focus Student Student Details Ethnic/Cultural panel and enter First language
F	2350	Insufficient Address information provided.	Name: Bains, Kirki Date of Birth: 2005-01-18, Male/UPN: H520200105012	# Go to Focus Student Student Details Addresses and edit pupil's address
Q	1601Q	Please Check: Pupil's age is out of range for school type.	Name: Sungul, Skastei Date of Birth: 2008-03-28, Female, Age: 12/UPN: B8	# Go to Focus Student Student Details and enter pupil's date of birth.
Q	1620Q	Please check: duplicate pupil records with the same Surname, Forename, Gender and Date of birth.	Name: Bennison, Hugo Date of Birth: 2013-02-03, Male/UPN:	# Go to Focus Student Student details and check for duplicate pupil record.
Q	1620Q	Please check: duplicate pupil records with the same Surname, Forename, Gender and Date of birth.	Name: Bennison, Hugo Date of Birth: 2010-02-03, Male/UPN: V82329991400	# Go to Focus Student Student details and check for duplicate pupil record.
Q	1356Q	Please check: Pupil record with no address details.	Name: Bellows, Cuthi Date of Birth: 2013-05-14, Female/UPN: F8939898140	# Go to Focus Student Student Details Addresses and edit pupil's address

The **Validation Errors Summary** panel header displays the number of errors and queries found when the Create and Validate routine was run. A student and error search facility is also available.

The following information is provided to help with the resolution of validation failures:

- **Type** - the type of validation rule.
 - Failure (**F** displayed in red) indicates an error that must be resolved.
 - Query (**Q** displayed in black) indicates that there are unusual data conditions. These should be considered and corrected, if necessary.
- **Sequence** - the validation error or query number.
- **Message** - the validation error or query message text.
- **Location** - the specific record in SIMS that contains the error or query.
- **Solution** - the SIMS menu route and/or instructions about where/how the error can be corrected or the query checked.

TIP: Using the Solution hyperlinks

When the pointer is hovered over an error or query row, it changes to a hand if a hyperlink is available to the area of SIMS where the problem can be checked.

*A hyperlink is also indicated by a hash symbol (#) preceding the **Solution** text.*

Click the required hyperlink to display the specific area in SIMS where the record(s) can be checked/corrected.

To assist in the viewing of errors and queries:

- When the mouse pointer is hovered over a **Message, Location** or **Solution**, hover help displays the entire content of that cell.
- The Student Search functionality can be used to display all errors and queries relating to a particular pupil/student.
 - a. Enter all or part of a UPN, pupil/student's surname or date of birth in the **Student Search** field.
 - b. Select the required record from the **Student Search** drop-down list to populate the **Student Search** field.
 - c. Click the **Find** button to display the applicable validation records.
- Use the **Errors Search** to display the required error or query you want to view. Select **ALL, ERRORS, QUERIES** or the required number from the drop-down list. The total number of rows that relate to the selected validation is displayed adjacent to the **Error Search** field.
- By default, when **ALL** is selected from the **Errors Search** drop-down list, the errors are displayed at the top of the list.

The order of the items in the list can be changed by clicking the appropriate column heading.

The width of the columns can be changed by dragging the dividing line between the column headings until the required size is achieved.

- View a summary of validation failures by clicking the **Report** button (located above the **Validation Errors Summary** panel, on the left-hand side). The report is displayed in your web browser, from where it can be printed or transferred to another application, if required (please see *Transferring Report Data to a Spreadsheet* on page 63).

The report is saved automatically in the **Census Folder** (specified previously via the census browser). The original report, which was generated when the **Create & Validate** button was clicked is also stored in this folder.

- Your generated report file name: Validation Errors Summary.HTML
- Original report file name:
<LACode><SchoolNumber>_<SurveyType>_<LACode><LL><Year>_<SerialNumber>_ValidationErrorsSummary.HTML

For guidance on navigating to files on your local workstation when you are working in a Hosted environment, please contact your System Manager or Local Support Unit.

Resolve as many errors and check as many queries as possible then revalidate the return details. Continue to resolve failures and revalidate the return as many times as necessary.

NOTE: All errors must be resolved and all queries must be investigated.

If at any point you want to hide the list of error and queries, click the **Close** button located at the top right-hand side of the **Validation Errors Summary** panel. The list is displayed again when the Create and Validate process is run.

Many of the errors generated can be fixed quickly using bulk update functionality (via **Routines | Pupil (or Student) | Bulk Update**). For more information, please refer to the *Managing Pupil/Students* handbook.



More Information:

Transferring Report Data to a Spreadsheet on page 63

Producing Detail Reports

Detail reports can be used to check the data stored in SIMS that has been used to create the return. The reports can be produced as soon as the return has been created and validated.

Each detail report header displays the **Security Message** that was defined in the **Census Return** browser, the **Report Criteria** and the **Total Pupil (or Student)s** who are listed in the report. Also included in the report header is the **School Name**, the **Fileset Number**, the **Filename**, the **Report Created** date, and the **XML Version**.

Where a pupil/student's National Curriculum Year group is different from what their date of birth would suggest, the applicable **YTI** cell is highlighted in yellow.

The following reports are currently available.

On-Roll Basic Details Report

Report Criteria: Pupil/students on-roll on census day.

This report provides basic information about the pupil/students, e.g. UPN, ULN, legal surname, legal forename, preferred surname, former surname, date of birth (DOB), gender, year taught in (YTI), date of admission (DOA), enrolment status, ethnicity, language, class type, Youth Support Services Agreement indicator (YSSA), part-time status and boarder status.

Leavers Basic Details Report

Report Criteria: Pupil/students not on-roll on census day:

- Leavers with attendance one term ago (from the start of the 2020 Autumn term to 31/12/2020); and/or
- Leavers with exclusions (13/04/2020 to 31/12/2020); and/or
- Leavers with learner support of Vulnerable Group Bursary Awarded or Discretionary Bursary Awarded from 01/08/2020 to 21/01/2021.

This report provides basic information about leavers: UPN, ULN, former UPN, legal surname, legal forename, middle names, former surname, date of birth (DOB), gender, date of admission (DOA), date of leaving (DOL), ethnicity, language, part-time status, boarder status, attendance, exclusions and learner support status.

Exclusions Report

Report Criteria: On-roll pupil/students and leavers with exclusions and final exclusion reviews:

- Fixed term exclusions, excluding lunchtime exclusions, starting from 13/04/2020 to 31/12/2020
- Permanent exclusions between 13/04/2020 and 31/12/2020.

Termly Exclusions (Fixed and Permanent)

NOTE: Permanent exclusions are collected only if a final review exists.

The following details about pupil/students who match the report criteria are displayed: UPN, legal surname, legal forename, date of birth (DOB), gender, date of admission (DOA), exclusion category, reason(s) for exclusion, exclusions start date, number of session from which the pupil/student was excluded, SEN provision and on-roll status.

Attendance Report

Report Criteria: Pupil/students with attendance one term ago (from the start of the 2020 Autumn term to 31/12/2020). On-roll and leavers (but not boarders) who were aged four to 15 at 31/08/2020.

This report displays the following information about pupil/students and their attendance: UPN, legal surname, legal forename, date of birth (DOB), gender, date of arrival (DOA), year taught in (YTI), termly sessions possible, on-roll status, termly present codes, termly approved education activity codes, termly attendance codes (divided into authorised and unauthorised sessions) and attendance not required (Y). Totals are displayed at the bottom of each column.

A list of codes and their descriptions are displayed at the end of the report.

Absentees Report

Report Criteria: On-roll pupil/students and leavers (not boarders) who have an absence rate of 10% or above, with attendance one term ago (start of Autumn term to 31/12/2020), who were aged four to 15 at 31/08/2020.

The report does not include data from the second half of the summer term.

04| Completing the School Census Spring Return

An individual pupil/student's overall absence rate is calculated as follows:

$$\text{Overall absence rate} = \frac{\text{Total overall absence sessions}}{\text{Total sessions possible}} \times 100$$

The report provides the following information about the pupil/students who match the report criteria: UPN, legal surname, legal forename, date of birth (DOB), gender, year taught in (YTI), number of sessions possible, session absence (i.e. the number of authorised plus unauthorised absences), on-roll status and enrolment status.

This report can assist with the tracking of absence (particularly persistent absence) and highlights those absences that might need to be tracked.

SEN Report

Report Criteria: On-roll pupil/student with SEN Provision/Status **E** (Education, Health and Care Plan) or **K** (SEN Support).

This report provides a list of pupil/students who have special educational needs. Displayed are their UPN, legal surname, legal forename, date of birth (DOB), gender, year taught in (YTI), SEN provision, SEN type ranking, SEN type, member of SEN unit and member of resourced provision indicator, and on-roll status.

Address Details Report

Report Criteria: Pupil/students on-roll on census day.

This report provides a list of pupil/students, their UPN, former UPN, legal surname, legal forename, middle name(s), post code, unique property reference number (UPRN), address details and the administrative area/county.

Definition: Unique Property Reference Number (UPRN) is a unique identifier (reference number) that links together related address records across different software programmes. This enables organisations to collate and share information based on a common reference number.

School Dinner Taken Report

Applicable to schools with pupils in Reception, Year 1 and Year 2 (not applicable to Nursery schools)

Report Criteria: Pupil/students on-roll on census day, who have taken school dinner on the reference date.

- Pupil/students in Year Taught In R, 1 and 2.
- Pupil/students in Year Taught In X who are aged four to six and who were born between 01/09/2013 and 31/08/2016 inclusive (**Special schools only**).

The report header also displays the total number of pupil/students, the total number of school dinners taken and the total number of school dinners not taken.

This report provides the following information about pupil/students who match the report criteria: UPN, legal surname, legal forename, date of birth (DOB), gender, year taught in (YTI) and school dinner taken (yes/no).

Free School Meal Eligibility Report

Report Criteria: On-roll pupil/students on census day who were eligible for free school meals on or after 02/10/2020 and up to 21/01/2021.

This report provides information on free school meal eligibility for pupil/students who match the report criteria: UPN, legal surname, legal forename, date of birth (DOB), gender, year taught in (YTI), free school meal eligibility start date, end date and the UK country in which the eligibility applies, and on-roll status.

NOTES: This report includes any free school meals recorded outside of England, e.g. Wales.

Only Free School Meals records where the country recorded is England or <blank> attract the Pupil Premium.

Learner Support Report

Report Criteria: On-roll pupil/students and leavers aged 16 plus at 31/08/2020 who have been awarded Vulnerable Group and/or Discretionary Bursary funding from 01/08/2020 to 21/01/2021.

This report provides information about the applicable pupil/students: UPN, legal surname, legal forename, date of birth (DOB), gender, year taught in (YTI), learner support and on-roll status.

Top-up Funding Report

Report Criteria: On-roll pupil/students who have been awarded Top-up Funding as at census day.

The report provides the following information: UPN, legal surname, legal forename, date of birth (DOB), gender, year taught in (YTI) and SEN provision.

Early Years Report

Applicable to schools with Early Years children only

Report Criteria: Pupils with early years data who are on-roll on census day.

- All two year old pupils who were born between 01/01/2018 and 31/12/2018 (Hours at Setting and Funded Hours only)
- All three year old pupils who were born between 01/09/2016 and 31/12/2017
- All four year old pupils who were born between 01/09/2015 and 31/08/2016 (with Year Taught In E1, E2, N1 and N2).

The report displays the following information: UPN, legal surname, legal forename, date of birth (DOB), gender, year taught in (YTI), hours at setting, funded hours, 30 hour code, extended funded hours and disability access fund.

EYPPR Report

Applicable to schools with Early Years children only

Report Criteria: Pupil/students on-roll on census day.

- All 3 year olds born between 01/09/2016 and 31/12/2017 (inclusive)
- 4 year olds (for other than Nursery - in E1, E2, N1 and N2 only) born between 01/09/2015 and 31/08/2016 (inclusive)
- 4 year olds (for Nursery – all pupils).

The Early Years Pupil Premium Receipt (EYPPR) report provides a list of all pupil/students, their UPN, legal surname, legal forename, preferred surname, former surname, date of birth (DOB), gender, year taught in (YTI), post looked after arrangements, hours at setting, funded hours and their basis for EYPP eligibility (e.g. receipt-economic, receipt-other, receipt-economic and other, receipt-unknown or not eligible).

2 Year Old Basis for Funding Report

Applicable to schools with Early Years children only

Report Criteria: Pupils on-roll on census day having two year old basis for funding data. All two year olds who were born between 01/01/2018 and 31/12/2018.

The report displays the following information: UPN, legal surname, legal forename, date of birth (DOB), gender, year taught in (YTI), hours at setting, funded hours, economic criteria, high level SEN or disability and looked after or adopted from care status.

Post Looked After Arrangements Report

Report Criteria: On-roll pupil/students who have post looked after arrangements as at census day.

The report provides the following information about pupil/students who have post looked after arrangements: UPN, legal surname, legal forename, date of birth (DOB), gender, year taught in (YTI) and post looked after arrangements, e.g. ceased to be looked after through adoption.

Class Report

Report Criteria: Classes on the selected period on the reference date.

The following class information is provided for the Primary phase: class name, number of on-roll pupil/students in class, number of guest pupil/students in class, number of teachers, number of teachers on planning, preparation and assessment time (PPA), number of support staff, the year taught in (YTI), class type, key stage, class activity and class size exception reasons. A key to class size exception reasons is displayed below the **Classes** table.

The following class information is provided for the Secondary phase: class name, number of on-roll pupil/students in class, number of guests pupil/students in class, number of teachers, number of support staff and the year taught in (YTI).

Displayed at the bottom of the report is the pupil/student reconciliation data:

- part-time pupil/students not at school
- private study pupil/students

- pupil/students at another school
- pupil/students on work experience
- pupil/students at Further Education colleges
- total pupil/students not in class at selected period.

General Report

Where applicable, the General report provides information about:

- free school meals taken on census day.
- all appeals that were made in the academic year 2019/2020 against a refusal to admit a pupil/student into the school for the 2020/2021 academic year:
 - infant admission appeals
 - primary admission appeals
 - secondary admission appeals.
- childcare provisions during the 2020/2021 academic year.

The report displays the following information: childcare type, on site, signposted, opening time, closing time, number of childcare places, provider, other schools and weeks open.

Generating Detail Reports

Selecting a Single Detail Report

Select the required report from the **Detail Report** drop-down list located at the top of the **Census Return Details** page. The selected report is generated automatically.

The reports that are available may vary according to your school phase.

The screenshot displays the 'Census Return Details' interface for the Spring 2021 term. The 'Detail Report' dropdown menu is open, showing a list of report options. The background shows the '1 Census Details' section with the following information:

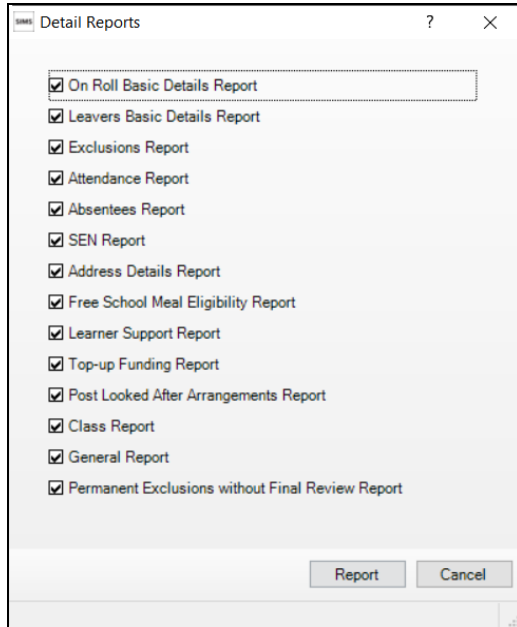
- Census Date:** 21/01/2021
- Description:** School Census Spring 2021
- Attendance collected from:** 03/09/2020
- Exclusions collected from:** 13/04/2020
- FSM collected from:** 02/10/2020
- Learner Support collected from:** 01/08/2020

The '2 Selected Period on Census Day' section shows the Reference Date as 21/01/2021 and the YTI when timetabled classes begin as Curriculum Year 7.

Selecting Multiple Detail Reports

1. Select **Multiple reports...** from the bottom of the **Detail Report** drop-down list to display the **Detail Reports** dialog. By default, all detail reports are selected.

The reports that are available may vary according to your school phase.



2. If any reports are not required, deselect the associated check box.
3. Click the **Report** button to generate the selected reports.

The report(s) are displayed in your web browser, from where the data can be transferred to a spreadsheet such as Microsoft® Excel if required.

The report(s) are saved automatically in the **Census Folder**, which was specified in the **Census Return** browser, e.g. C:\SCHOOL CENSUS. For guidance on navigating to files on your local workstation when you are working in a Hosted environment, please contact your System Manager or Local Support Unit.

The report is saved with a filename that consists of the following data fields separated by underscores ('_'):

```
<LACode><SchoolNumber>_<SurveyType>_<LACode><LL><Year>_<SerialNumber>_<name of the report>_.html
```

For example:

```
8234321_SC1_823LL21_001_onroll_basic_details_report.html.
```

Printing a Report from your Web Browser

IMPORTANT NOTE: Any printed reports containing information that could identify a person (e.g. their name, address, UPN, etc.) should be used for validation purposes only and should not be retained. The Security Message (displayed at the top of each report) can be customised to include, for example, instructions for the destruction of the printed reports.

1. With the generated report displayed in your web browser, select the **Print** option (**Ctrl+P**) to display the **Print** dialog.
2. Ensure that the print settings are correct then click the **Print** button.
3. Click the **Close** button on the top right-hand corner of the web page to close the report and return to the census page.

Transferring Report Data to a Spreadsheet

Transferring a report to a spreadsheet application enables the data to be sorted, the column order to be changed, etc.

With the generated report displayed in your web browser, right-click the report and then select the required option, e.g. **Export to Microsoft Excel**, from the drop-down list.

IMPORTANT NOTE: The spreadsheet contains the same level of sensitive information as the original HTML report from which the information was transferred. Therefore, the spreadsheet file must be saved to a folder with the same level of security.

Deleting Temporary Web Browser Files

It is recommended that, after viewing statutory returns reports, you delete any temporary web browser files to ensure that any cached data (i.e. data stored on your machine, which enables high-speed access to previously viewed data) is removed.

This prevents the information, e.g. copies of web pages that are stored in the local cache for faster viewing, remaining on the hard disk of the PC in the temporary directory, where they are not secure because they can still be accessed.

When this process is performed, all temporary files (including any Statutory Returns reports files) that the browser has cached are deleted.

To clear the cache, open your web browser, then clear the browsing data history via Settings. For more information, please refer to the documentation applicable to the web browser you are using.

Producing the Summary Report

The Summary report enables the school staff, who are involved in the return's preparation, to assess the accuracy and completeness of the return data. It should then be passed to the Head Teacher for their review.

NOTE: When the return is authorised, the Summary report is automatically generated and displayed in your web browser.

Generating the Summary Report

Click the **Summary** button located at the top of the **Census Return Details** page. The report is automatically displayed in your web browser. Some web browsers provide an option to transfer the information to a spreadsheet such as Microsoft® Excel.

The report is saved automatically in the **Census Folder**, which was specified in the **Census Return** browser, e.g. C:\SCHOOL CENSUS. For guidance on navigating to files on your local workstation when you are working in a Hosted environment, please contact your System Manager or Local Support Unit.

The report is saved with a filename that consists of the following data fields separated by underscores ('_'):

```
<LACode><SchoolNumber>_<SurveyType>_<LACode><LL><Year>_<SerialNumber>_<name of the report>_.html
```

For example: 8234321_SC1_820LL21_001_Summary_Report.html.

It is important that the Head Teacher checks all the information on the Summary report before the return is authorised. Your LA might request that a copy of the Summary report is signed by the Head Teacher and sent to the LA when the return has been authorised.

Editing an Unauthorised Return

The return details, e.g. **Description**, **School Information**, etc. can be edited via the **Census Return Details** page at any time prior to authorisation.

IMPORTANT NOTE: An authorised return cannot be edited. If changes are required to an authorised return, use the **Copy** facility to produce a duplicate return (with a unique description) in which the changes can be made.

1. Select **Routines | Statutory Returns | School Census** to display the browser.
2. Ensure that the **Census Folder** and the **Security message for Reports** are correct, then click the **Search** button to display any previously created returns. Unauthorised return files can be recognised by their .UNA suffix.
3. Double-click the required return. Alternatively, highlight the required return, then click the **Open** button to display the **Census Return Details** page.
4. Edit the return details as required.

5. Click the **Create & Validate** button to display the **Validation Errors Summary** panel.
6. Run the detail reports and Summary report and then use the information they provide to assist with resolving errors and queries.
7. Repeat the editing and Create & Validate process again, if necessary.
8. Click the **Save** button.



More Information:

Configuring the Census Folder on page 11

Specifying the Security Message for Reports on page 12

Resolving Validation Errors and Checking Queries on page 54

Producing Detail Reports on page 56

Producing the Summary Report on page 64

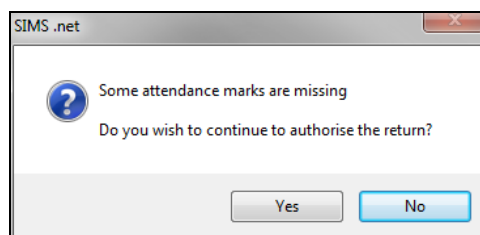
Authorising the Return

A return must be authorised before it can be submitted to your Local Authority or uploaded to the DfE COLLECT data collection website (as applicable to your school). If you authorise a return and subsequently need to make amendments, you must either make a copy of the return and work on the copy, or create a new return.

Before authorising the return, you should ensure that all the information displayed on the **Census Return Details** page is correct and does not require further editing. This is because it is not possible to edit details after the return is authorised. The Summary report can assist in reviewing the information.

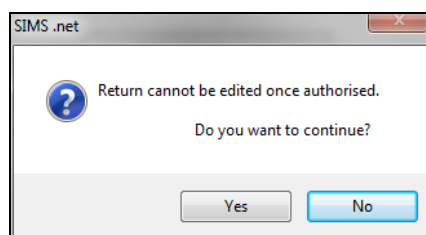
1. Click the **Authorise** button.

If missing marks exist, the following message is displayed.



2. Click the **Yes** button to continue with the authorisation process or the **No** button if you want to return to SIMS where the missing marks can be entered.

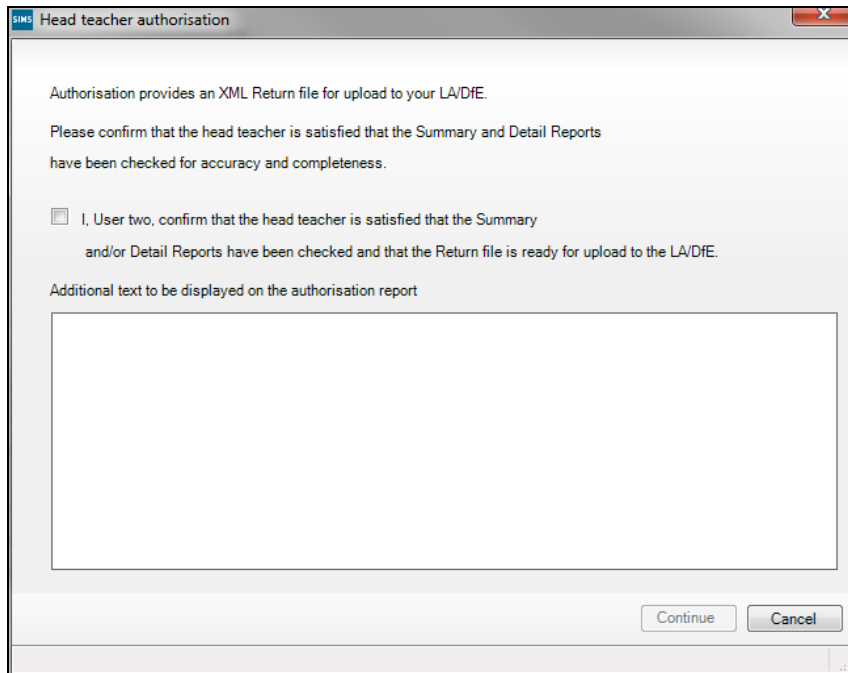
If you choose to continue, a message reminds you that the return cannot be edited once it is authorised.



04 | Completing the School Census Spring Return

3. Click the **Yes** button to continue or the **No** button to return to SIMS where edits can be made to the data before authorising.

If you choose to continue, the **Head teacher authorisation** dialog is displayed.



The screenshot shows a dialog box titled "SIMS Head teacher authorisation". The text inside reads: "Authorisation provides an XML Return file for upload to your LA/DfE. Please confirm that the head teacher is satisfied that the Summary and Detail Reports have been checked for accuracy and completeness." Below this is a checkbox with the text: "I, User two, confirm that the head teacher is satisfied that the Summary and/or Detail Reports have been checked and that the Return file is ready for upload to the LA/DfE." Underneath is a text area labeled "Additional text to be displayed on the authorisation report". At the bottom right are "Continue" and "Cancel" buttons.

4. Enter any additional text to be displayed on the authorisation report, if required. This may be requested by your LA, e.g. to explain the reason for any validation failures.
5. Select the confirmation check box to confirm that the Head Teacher is satisfied that the Summary and/or detail reports have been checked and that the return file is ready for upload to your LA/DfE.

When the confirmation check box is selected, the **Continue** button is activated enabling you to complete the authorisation process.

6. Click the **Continue** button to authorise the return.
 - The return file extension changes automatically from UNA (unauthorised) to XML (authorised).
 - The Summary report, Authorisation report and Validation Errors Summary report are generated automatically and displayed in your web browser, from where they can be printed, if required.

All reports (including detail reports) and the XML file, are saved in the **Census Folder**, which was specified previously in the **Census Return for Spring 2021 Term** browser.

These reports can be viewed using the Retrieve Authorised Census Return Files routine (via **Tools | Statutory Return Tools**). This routine also provides the opportunity to download the files to a different folder.

IMPORTANT NOTE: *The retrieved files contain sensitive information. Ensure that authorised personnel only have access to the download folder.*

For guidance on navigating to files on your local workstation when you are working in a Hosted environment, please contact your System Manager or Local Support Unit.

After the return is authorised, reports based on cohorts can be created (via **Reports | Design Reports**), so that items collected in the return can be tracked. Provided that **Student** has been selected as the data area, the Statutory Returns sub-report is available for selection when specifying the fields to be included in the report (the last node).



Additional Resources:

Designing and Running Reports handbook



More Information:

Producing the Summary Report on page 64

Retrieving Authorised Census Return Files on page 67

Copying a Return on page 68

Submitting the Return

When the return has been completed and the Summary report has been signed by the Head Teacher (if requested to do so by your LA), the .XML file can be uploaded to the DfE COLLECT data collection website or sent to your LA, depending on the instructions you have been given.

Guidance about how Local Authorities, schools and academies should submit school census data is available on the GOV.UK website (<https://www.gov.uk/guidance/school-census>).

The authorised return file is located in the folder previously specified in the return browser. For guidance on navigating to files on your local workstation when you are working in a Hosted environment, please contact your System Manager or Local Support Unit.

IMPORTANT NOTE: *An authorised file cannot be edited. If you need to make changes to an authorised file, you must make a copy of the original file, rename it and work on the copy.*

Retrieving Authorised Census Return Files

Authorised returns are stored in your Document Management Server (DMS). The Returns Manager can download and run the reports associated with previous authorised returns enabling the data for the current return to be compared with that submitted previously.

1. Select **Tools | Statutory Returns Tools | Retrieve Authorised Census Return Files** to display the **Retrieve Authorised Census Return Files for <census name>** page.
2. Select the type of census required from the **Return Type** drop-down list to display a list of previous returns that match the selected criteria.
3. By default, the files **Download to** the folder specified in the census browser. To specify a different folder:

- a. Click the **Select a Folder** button (...) to display the **Browse For Folder** dialog. Navigate to the location of the required folder then highlight it. If a suitable folder does not exist, click the **Make New Folder** button then enter a suitable folder name.

IMPORTANT NOTE: Ensure that authorised personnel only have access to the download folder because the retrieved files contain sensitive information.

For guidance on navigating to files on your local workstation when you are working in a Hosted environment, please contact your System Manager or Local Support Unit.

- b. Click the **OK** button to select or create the folder then return to the **Retrieve Authorised Return Files for <cenus name>** page where the chosen folder name is displayed in the **Download to** field.
4. Highlight the return you wish to retrieve then click the **Retrieve Files** button.

The authorised return file (i.e. the XML file) and all reports associated with the selected return are downloaded from your DMS to the specified folder. The folder and its contents are then displayed automatically, enabling you to open the required files in your web browser.

5. The contents of the specified folder can be viewed again by clicking the **Folder** button adjacent to the **Download to** field.

If you want to create reports based on cohorts, so that items collected in the return can be tracked, a sub-report is available (via **Reports | Design Reports**).

The **Statutory Returns** sub-report is available for selection only if **Student** has been selected as the Data Area.

When you **Select fields to be included in the report**, the **Statutory Returns** sub-report is located at the bottom of the list (the last node). Three options are available for selection under this sub-report: **Authorised Date**, **File Name** and **Return Description**.



Additional Resources:

Designing and Running Reports handbook

Copying a Return

An unauthorised return can be copied and saved as a new return. This enables a 'snapshot' of a return to be taken at any time providing a backup of any manual changes that have been made to the return, for example before recalculating details.

This functionality can also be used to make a copy of an authorised return if the LA or DfE requires it to be resubmitted. The necessary corrections can then be made to the data. The copied return must be saved, created, validated and authorised before resubmitting.

NOTE: Ensure that the return you wish to replicate is not open at the time of copying.

1. Select **Routines | Statutory Returns | School Census** to display the census browser.
2. Click the **Search** button to ensure that the list of returns is displayed.
3. Highlight the file you want to copy and then click the **Copy** button.

A message requests confirmation that you wish to make a copy of the selected return.

IMPORTANT NOTE: Any values for attendance (where applicable), Early Years, Post Looked After Arrangements and Top-up Funding will not be copied but will be populated from the current values held in the database. The Create & Validate routine must be run to generate a new census file.

4. Click the **Yes** button to make the copy, which is then displayed in the browser as:
Copy of <description of selected file>.
5. To rename the copied return, highlight it, then click the **Open** button to display the **Census Return Details** page.
6. In the **Census Details** panel, edit the **Description** and then click the **Save** button.

IMPORTANT NOTE: A unique description must be used for each return. If duplicate returns are detected, an error message is displayed.

Deleting an Unauthorised Return

During the return process, several copies of the return might be created, e.g. to track progress. When the return has been authorised successfully, it is advisable to delete any versions of the return that are no longer required. This keeps the number of files in the storage folder and listed in the browser to a minimum, therefore removing confusion and lessening the risk of selecting the wrong return.

The Delete routine can be used to remove unwanted returns at any time prior to the relevant return being authorised.

IMPORTANT NOTES: Any return files that have already been authorised cannot be deleted.

When a return file is deleted, any associated files, e.g. Validation Errors Summary, detail reports, etc. that have been produced are also deleted.

1. Select **Routines | Statutory Returns | School Census** to display the browser.
2. Click the **Search** button to ensure that the list of return files is displayed.
3. Highlight the return file to be deleted, then click the **Delete** button. A message prompts for confirmation that the selected return should be deleted.
4. Click the **Yes** button to permanently delete the selected return file and all associated report files.

The selected return file and associated reports are removed from the browser and the storage folder.

Index

3

30 hour code 20

A

absentees report 57

academies 16

access rights 5

address details report 58

admissions appeals

 infant 49

 primary 50

 secondary 50

attendance information

 checking/editing 46

 compliant codes 47

 non-compliant codes 47

 school dinner taken on census day .35, 38

 SIMS Attendance not in use 38

authorising 65

 retrieving previous authorised census

 returns 67

 school census 65

C

calculating all details 14

census details

 checking dates 12

 editing description 12

childcare 16

 updating 16

class types

 updating 27

classes

 class size exceptions 42

 registration classes 40

 timetabled classes 43

configuring

 school census defaults 11

copying

 school census return 68

creating & validating 53

D

data collected

 school level 6

 pupil/student level 7

default folder

 defining 12

deleting

 school census return 69

 temporary web browser files 63

detail reports

 producing 56

 transferring to a spreadsheet 63

DfE compliant codes 47

DfE non-compliant codes 47

dinner money

 school dinner taken on census day .35, 37

disability access fund 20

E

early years data

 30 hour code 20

 disability access fund 20

 extended funded hours 20

 funded hours 19, 20

 hours at setting 19, 20

 pupil premium (EYPP) 19

 report 59

 updating 19, 20

editing

 an unauthorised return 64

 attendance information 46

 class types 27

 early years 20

 post looked after arrangements 32

 school information 14

entering

 attendance information 46

errors and queries (validation)

I | Index

resolving	54
exclusions report.....	57
extended funded hours	20

F

free school meals	
eligibility report.....	59
on census day	49
funded hours	
no hours recorded	25
updating	19, 20

H

hours at setting	
no hours recorded	25
updating	19, 20

I

in care status.....	19
infant admissions appeals.....	49

L

learner support report.....	59
-----------------------------	----

P

permissions.....	5
post looked after arrangements	
editing	32
report.....	60
PPA teachers	40
preparation	
checking data	6
minimum version of SIMS.....	6
permissions	5
previous authorised census returns.....	67
primary admissions appeals.....	50
printing	
reports.....	63, 67
validation errors summary	54
pupil premium eligibility/receipt	19
pupil/student reconciliation.....	45
universal infant school meal.....	35

Q

queries and errors (validation)	
resolving	54

R

reconciliation	
pupil/student reconciliation	45
reporting	
deleting temporary web browser files ..	63
designing reports.....	67
producing detail reports.....	56
absentees report.....	57
address details report.....	58
attendance report	2, 57
exclusions report	57
free school meal eligibility report.....	59
general report	61
generating detail reports.....	61
learners support report	59
leavers basic details report.....	57
on-roll basic details report.....	56
post looked after arrangements	
report.....	60
school dinner taken report.....	58
SEN report.....	58
top-up funding report	59
specifying security message	12
resolving	
errors and queries	54
retrieving	
authorised census return files.....	67
return	
permissions	5

S

school census return	
authorising	65
configuring the storage folder.....	11
copying	68
deleting.....	69
new	9

school dinner taken on census day.....	35
school dinner taken report	58
school information	
checking	6, 14
school meals	
taken on census day	49
secondary admissions appeals.....	50
security	
deleting temporary files.....	63
specifying security message.....	12
selected period on census day.....	13
SEN report	58
SIMS	
version required to create return	6
steps to producing the return	
flowchart.....	3
submitting the return.....	67
summary report	
printing.....	63
producing.....	64

T

temporary web browser files	
deleting	63
top up funding	
top-up funding report.....	59
updating	29, 59
transferring	
report data to a spreadsheet.....	63

U

unauthorised return	
copying.....	68
deleting	69
editing	64
updating	
class types	27
early years data	19, 20
post looked after arrangements	32
top-up funding	29

V

validation failures	
resolving	54